

*Developing people
for health and
healthcare*

Health Education East of England GMC National
Training Survey Analysis 2015: Trust Report

**West Suffolk
NHS Foundation
Trust**



Narrative

Trust Indicators

The dashboard for the West Suffolk NHS Foundation Trust illustrates where it stands relative to the national mean and the other trusts nationally participating in the National Training Survey (NTS). Four of the 14 indicators lie in the first quartile, Nine in the second, none in the third and one in the fourth quartile.

The chart illustrating the means by indicator from 2012 to 2015 shows that indicators are either staying level or going up. West Suffolk's Means by Indicator chart for 2014 and 2015 compared to the 2015 national mean illustrates that most indicators are close to both the national mean and their own means from the previous year.

Programme Group Indicators

The chart for Overall Satisfaction for each programme group illustrates where West Suffolk's programme groups lie relative to each programme group's national mean. The quartiles were calculated for each programme group using the means of each trust participating in the NTS that runs that particular programme group. West Suffolk has five programme groups in the first quartile, two in the second, three in the third quartile and six in the fourth quartile. West Suffolk is in the bottom 25% of trusts which run the programme groups in quartile one while it is in the top 25% of trusts which run each of the programme groups which lie in quartile four.

Outliers

The outliers by programme group and level show which areas are above (green/A) and below (red/B) outliers. A programme group is an outlier if it is in the top or bottom of the GMC calculated quartiles and the confidence intervals do not overlap those of the national mean.

Medicine F2 has the most negative outliers with five, while Paediatrics has the most positive outliers with six.

The chart of net programme group outliers for 2012-2015 illustrates the net outliers for each programme group by trust, with positive outliers getting value +1 and negative outliers getting value -1. West Suffolk had a net outlier value of 12 in 2012, 11 in 2013, 5 in 2014 and 7 in 2015.

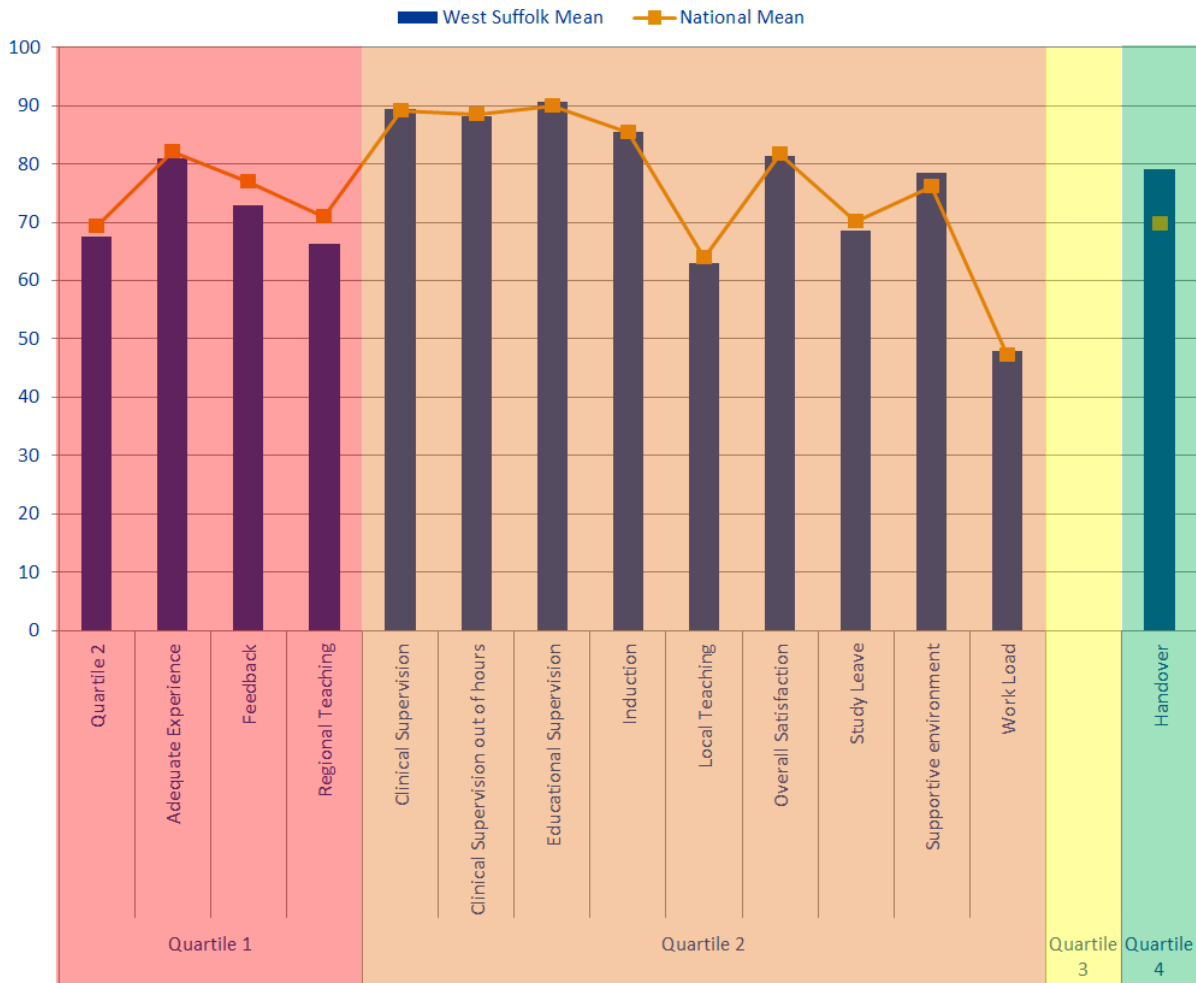
Rankings

The rankings chart shows where West Suffolk comes in comparison to the other trusts delivering each of its programme groups for Overall Satisfaction. The graph is calculated by dividing by the total number of trusts who reported information for that programme group in order to be able to directly compare each programme group, no matter how many trusts deliver it. West Suffolk has two programme groups which have moved from the top quartile to the bottom quartile in the last three years, Anaesthetics and Surgery F2. On the other hand Medicine F1 has moved from the bottom quartile to the top quartile in that time.

Patient Safety Concerns

West Suffolk has two patient safety concerns, one in understaffing and the other in patient care provided. West Suffolk is in the lower range for concerns per bed and has remained there for the last 3 years.

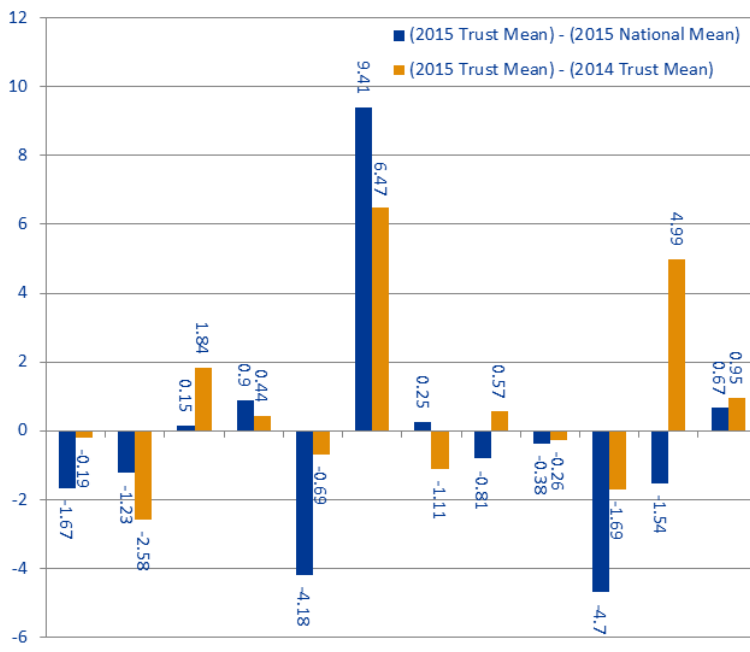
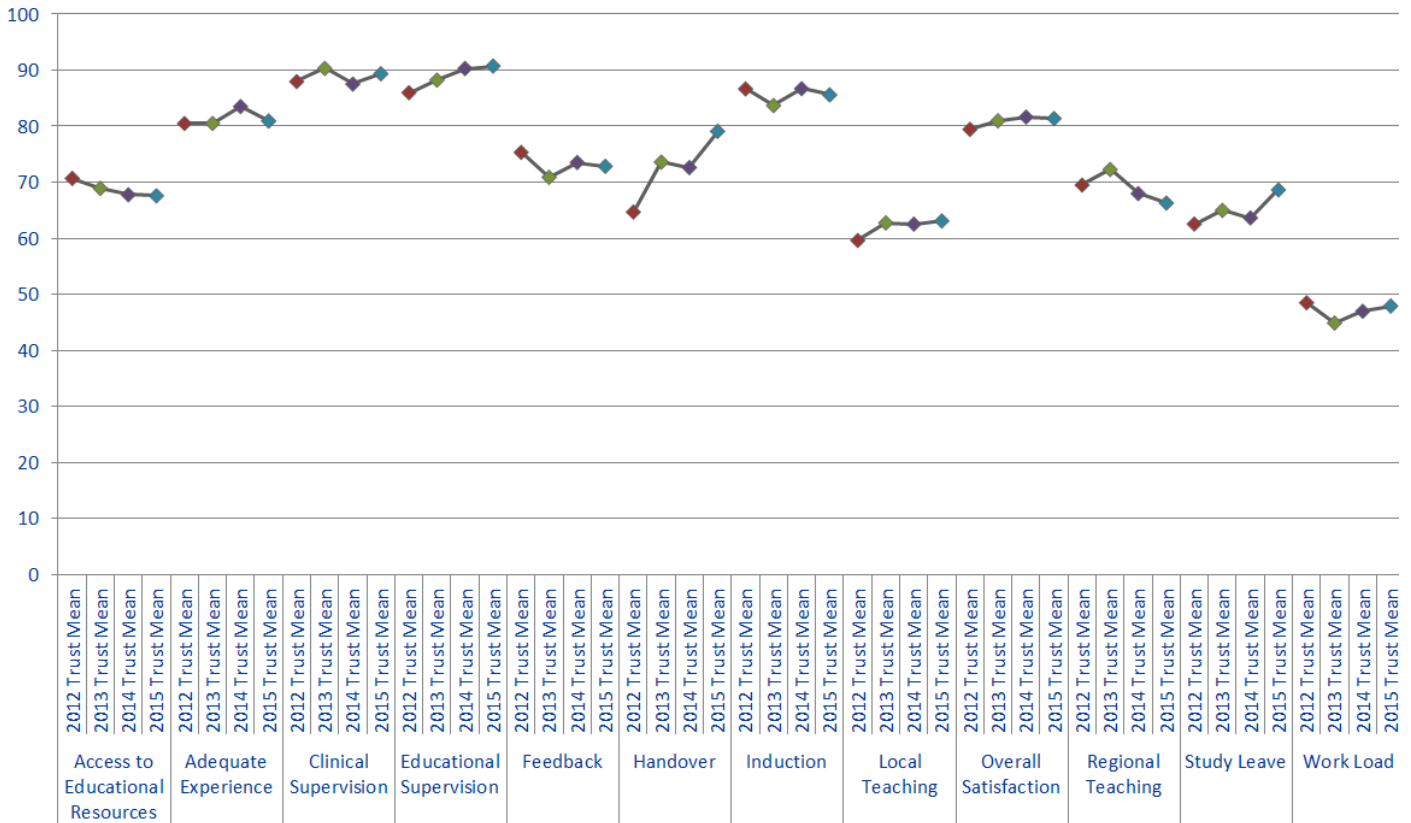
Dashboard



Quartile	Indicator	West Suffolk Mean	National Mean
Quartile 1	Quartile 2	67.57	69.24
	Adequate Experience	80.91	82.14
	Feedback	72.83	77.01
	Regional Teaching	66.28	70.98
Quartile 2	Clinical Supervision	89.34	89.19
	Clinical Supervision out of hours	88.23	88.44
	Educational Supervision	90.72	89.82
	Induction	85.58	85.33
	Local Teaching	63.09	63.9
	Overall Satisfaction	81.36	81.74
	Study Leave	68.63	70.17
	Supportive environment	78.56	76.14
	Work Load	47.92	47.25
	Quartile 3		
Quartile 4	Handover	79.08	69.67

The quartiles are calculated from the means for every trust that participated in the National Training Survey (NTS). The quartiles for each indicator are calculated separately. Therefore if a trust's indicator fell within the first quartile, then this means that the trust fell within the bottom 25% of trusts for that indicator. If a trust fell within the fourth quartile, then this means that the trust fell within the top 25% of trusts for that indicator.

Trend Data



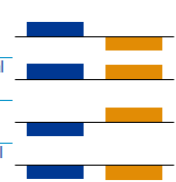
Indicator	2015 National Mean	2015 Trust Mean	2014 Trust Mean	(2015 Trust Mean) - (2015 National Mean)	(2015 Trust Mean) - (2014 Trust Mean)
Access to Educational Resources	69.24	67.57	67.76	-1.67	-0.19
Adequate Experience	82.14	80.91	83.49	-1.23	-2.58
Clinical Supervision	89.19	89.34	87.5	0.15	1.84
Educational Supervision	89.82	90.72	90.28	0.9	0.44
Feedback	77.01	72.83	73.52	-4.18	-0.69
Handover	69.67	79.08	72.61	9.41	6.47
Induction	85.33	85.58	86.69	0.25	-1.11
Local Teaching	63.9	63.09	62.52	-0.81	0.57
Overall Satisfaction	81.74	81.36	81.62	-0.38	-0.26
Regional Teaching	70.98	66.28	67.97	-4.7	-1.69
Study Leave	70.17	68.63	63.64	-1.54	4.99
Work Load	47.25	47.92	46.97	0.67	0.95

2015 trust mean lies above the national mean, but is below last year's trust mean

2015 trust mean lies above both the national mean and last year's trust mean

2015 trust mean lies below the national mean but above last year's trust mean

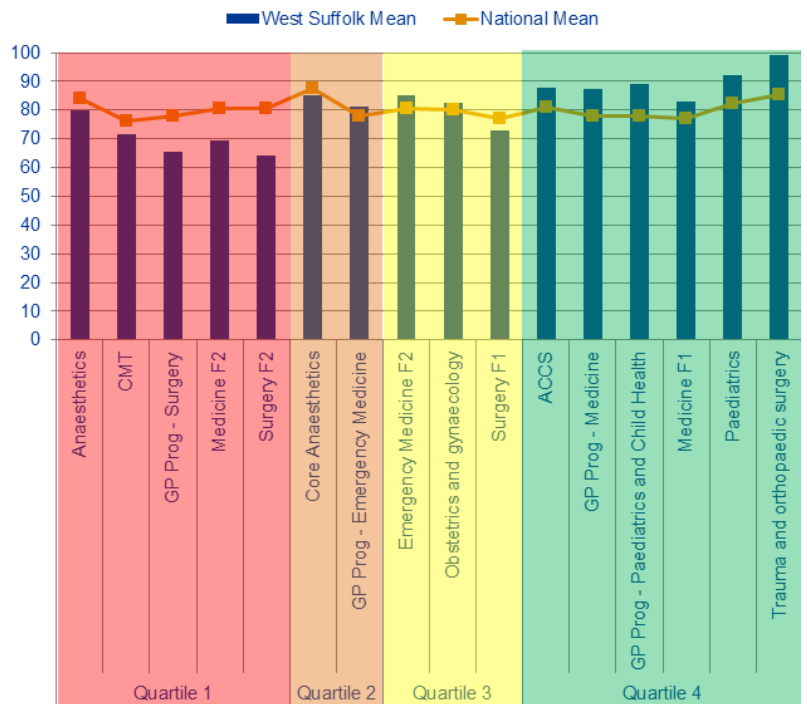
2015 trust mean lies below both the national mean and last year's trust mean



Overall Satisfaction by Programme Group

Programme Groups by Quartile

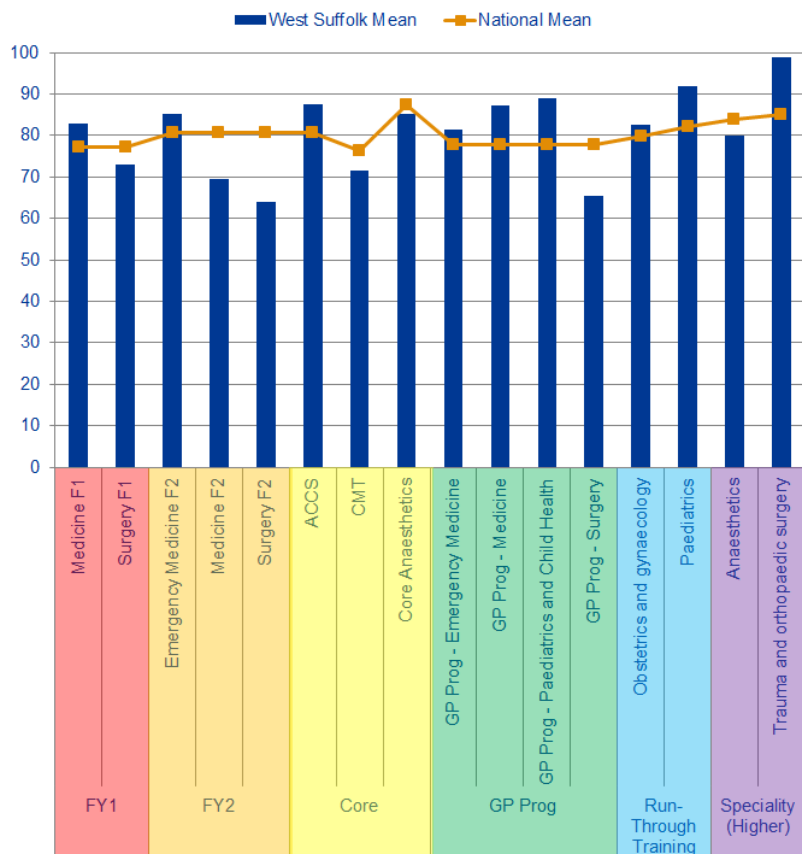
Quartiles	Programme Group	West Suffolk Mean	National Mean
Quartile 1	Anaesthetics	80	83.94
	CMT	71.43	76.35
	GP Prog - Surgery	65.33	77.89
	Medicine F2	69.5	80.57
	Surgery F2	64	80.57
Quartile 2	Core Anaesthetics	85.33	87.4
	GP Prog - Emergency Medicine	81.33	77.89
Quartile 3	Emergency Medicine F2	85.33	80.57
	Obstetrics and gynaecology	82.67	79.96
	Surgery F1	73	77.14
Quartile 4	ACCS	87.64	80.82
	GP Prog - Medicine	87.2	77.89
	GP Prog - Paediatrics and Child Health	89	77.89
	Medicine F1	83	77.14
	Paediatrics	92	82.29
	Trauma and orthopaedic surgery	99	85.18



Quartiles are calculated from the means for every trust that ran that programme group. The quartiles for each programme group are calculated separately. Therefore if a trust's speciality falls into the first quartile this means this speciality had an overall satisfaction mean that fell within the bottom 25% of trusts in the UK running this speciality.

Programme Groups by Level

Level	Programme Group	West Suffolk Mean	National Mean
FY1	Medicine F1	83.00	77.14
	Surgery F1	73.00	77.14
FY2	Emergency Medicine F2	85.33	80.57
	Medicine F2	69.50	80.57
Core	Surgery F2	64.00	80.57
	ACCS	87.64	80.82
GP Prog	CMT	71.43	76.35
	Core Anaesthetics	85.33	87.40
	GP Prog - Emergency Medicine	81.33	77.89
	GP Prog - Medicine	87.20	77.89
Run-Through Training	GP Prog - Paediatrics and Child Health	89.00	77.89
	GP Prog - Surgery	65.33	77.89
	Obstetrics and gynaecology	82.67	79.96
Speciality (Higher)	Paediatrics	92.00	82.29
	Anaesthetics	80.00	83.94
	Trauma and orthopaedic surgery	99.00	85.18



Programme Group Outliers

A Above Outlier
B Below Outlier

Programme Groups	Overall Satisfaction	Patient Safety					Educational Development						Training Environment		
		Clinical Supervision	Clinical Supervision Out of hours	Induction	Handover	Work Load	Supervision Education	Adequate Experience	Feedback	Local Teaching	Regional Teaching	Supportive Environment	Study Leave	Educational Resources	Access to
ACCS															
Anaesthetics					A										
CMT					A								B		
Core Anaesthetics											B				
Emergency Medicine F2															
GP Prog - Emergency Medicine					B					A	B			B	
GP Prog - Medicine		A	A	A	A										A
GP Prog - Paediatrics and Child Health		A	A												
GP Prog - Surgery	B									B					
Medicine F1															
Medicine F2	B												B		B
Obstetrics and gynaecology				A						B					
Paediatrics		A	A	A		A					A				
Surgery F1															
Surgery F2	B														B
Trauma and orthopaedic surgery	A				A					A	A		A		
CMT					A										
General surgery															B
GP Prog - Emergency Medicine					B										
GP Prog - Medicine					A										
GP Prog - Paediatrics and Child Health	A								A					B	
Medicine F2														B	B
Obstetrics and gynaecology		A		A		A									
Paediatrics										A					
Trauma and orthopaedic surgery					A	A					A				
ACCS															A
Anaesthetics	A			A											A
CMT					A										
GP Prog - Emergency Medicine					B										
GP Prog - Medicine					A						A				
GP Prog - Paediatrics and Child Health															
Medicine F2															
Obstetrics and gynaecology															
Paediatrics															
Trauma and orthopaedic surgery															
ACCS															A
Anaesthetics	A			A											A
CMT					A										
GP Prog - Emergency Medicine					B										
GP Prog - Medicine					A						A				
GP Prog - Paediatrics and Child Health															
Medicine F2															
Obstetrics and Gynaecology															
Paediatrics															
Trauma and orthopaedic surgery															A

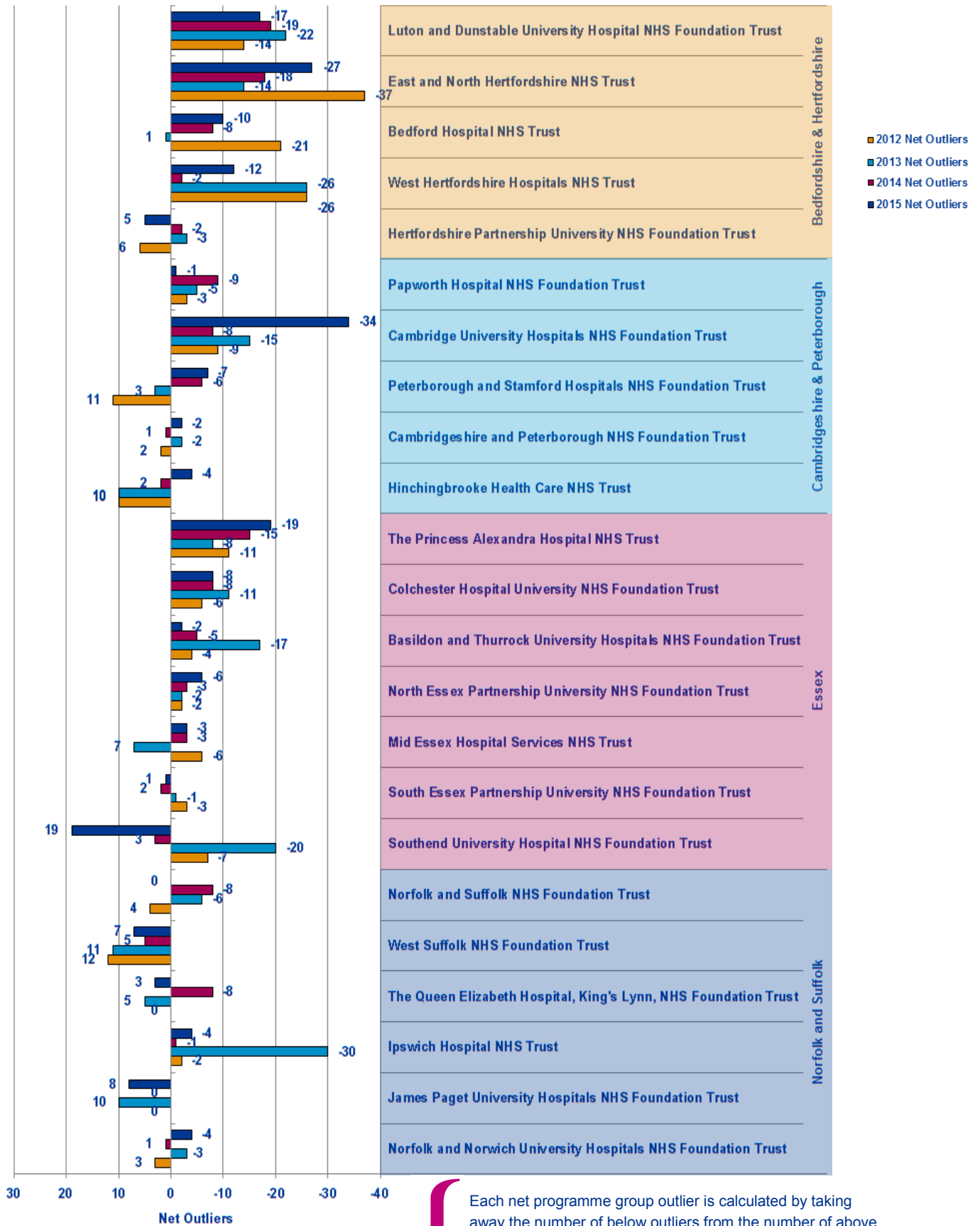
Programme Group	Overall Satisfaction	Patient Safety					Educational Development					Training Environment	Green Outliers	Red Outliers	2014 to 2015 CHANGE	
		Clinical Supervision	Clinical Supervision out of hours	Handover	Induction	Work Load	Adequate Experience	Feedback	Local Teaching	Regional Teaching	Supportive environment					
ACCS													1			
Anaesthetics													3	1		
CMT			3										1	1	1	1
Core Anaesthetics													1			1
Emergency Medicine F2																
GP Prog - Emergency Medicine			3										1	1	1	3
GP Prog - Medicine			3										2	1	5	
GP Prog - Paediatrics and Child Health													2	2	1	1
GP Prog - Surgery																2
Medicine F1																
Medicine F2				3											1	2
Obstetrics and gynaecology			3										2	3	1	1
Paediatrics				2									1	1	6	
Surgery F1																
Surgery F2																2
Trauma and orthopaedic surgery			2										4	3	5	
Total													14	11	22	3 4 15

This table represents the outliers for the last three years. A place is coloured if it is an above (Green) or below (Red) outlier in 2015. If an outlier in 2015 was not an outlier in either 2014 or 2013 then it is left as a pale colour and with nothing written in it. However if the outlier in 2015 has been an outlier multiple times over the last three years then the number of times it has been a positive or negative outlier is written in its box and the colour of the box is darkened correspondingly. This is useful for seeing where continuous issues or positive areas lie for each programme group.

On the right hand side of the table is a count of how many outliers there were for each programme group in each of the years. This can be used to see if programme groups are in general improving or getting worse.

The red and green arrows on the bottom left hand side represent whether the total number of positive and negative outliers has improved from 2014 to 2015.

Net Programme Group Outliers

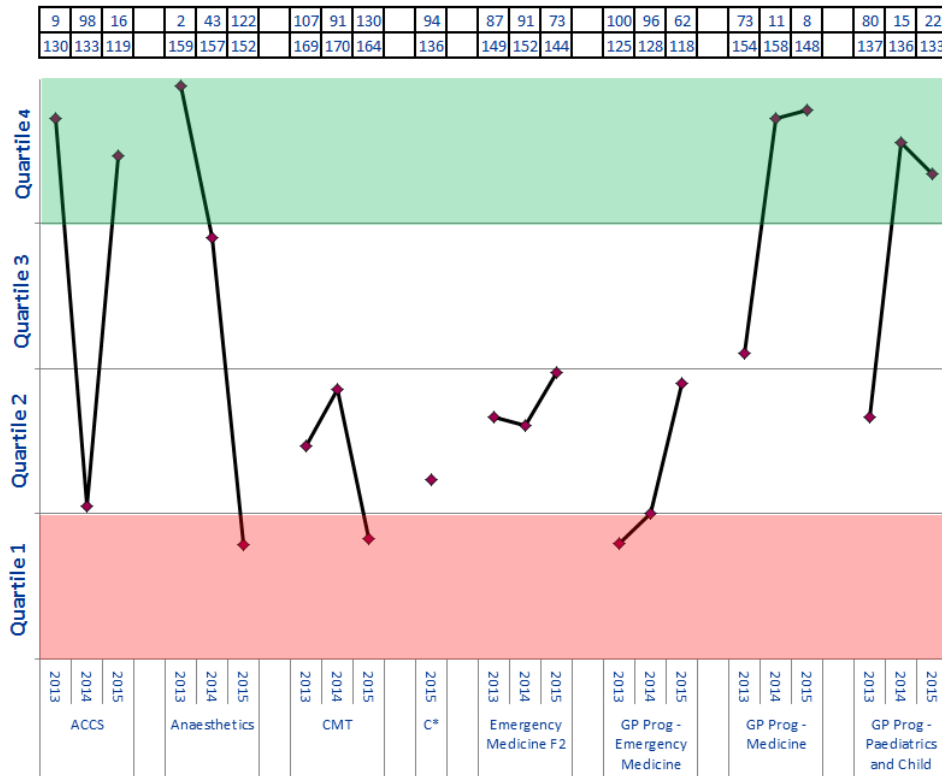


Each net programme group outlier is calculated by taking away the number of below outliers from the number of above outliers occurring across all programme groups for that trust in that year. Each trust has had their net outlier figure calculated for the last four years, permitting us to see the general trend for each trust and each workforce partnership.

Programme Group Overall Satisfaction Rankings

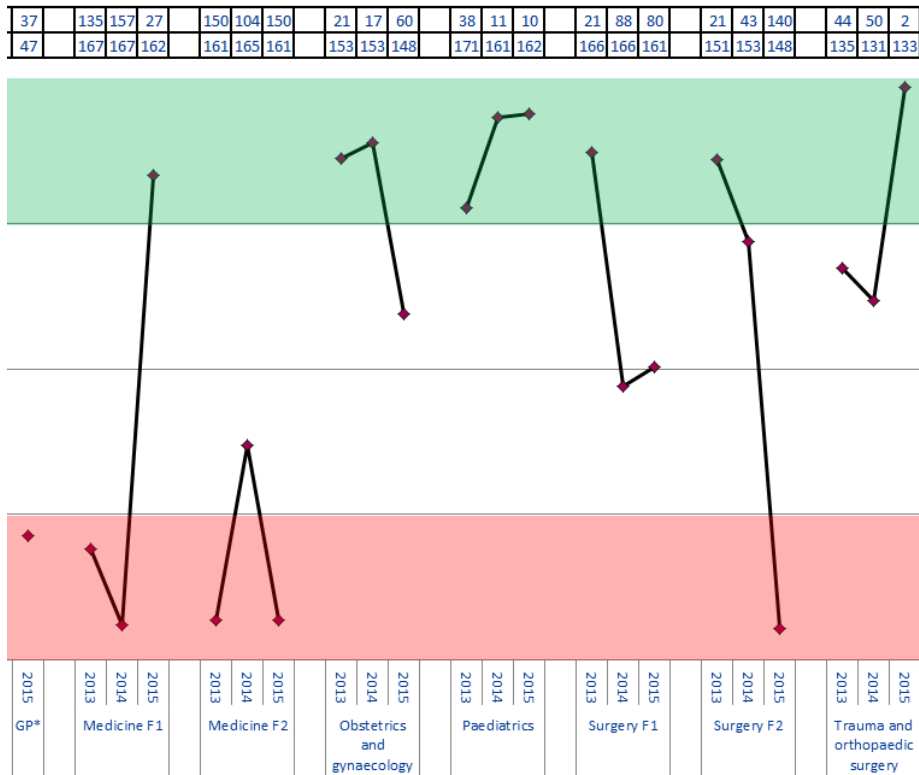
Trust Ranking

Total Number of Trusts Nationally Reporting for this Programme Group



C* = Core Anaesthetics

Trust ranking of each Programme Group for 2013-2015 is calculated by ordering the means of the Overall Satisfaction of all trusts reporting for that programme group with n>2 respondents. Quartiles have been calculated from means of the other trusts, meaning if a trust is in the top quartile then it is in the top 25% of trusts which deliver that programme group.



GP* =
GP Prog - Surgery

Patient Safety Concerns

These are the East of England Multiprofessional Deanery GMC NTS Patient Concerns for 2015 Collated by Local Education Provider (LEP) in March 2015. The data below has been broadly categorised to show the responses to the patient safety concerns question by LEP.

Areas of Concern identified	Understaffing	High Workload/ Work Intensity	Patient Care Provided incl assessment, treatment	Lack of Team work	Inadequate Handover	Capacity [shortage of Beds]	Confidence issues including lack of competence, induction; cross cover	Inadequate Supervision	Tension b/w education & service	Nursing Issues	Locum issues incl quality, availability	Clinical Processes incl equipment; IT	Intercultural communication issues incl lang	Non PSC - Ethical Issue	Total
BEDFORD & HERTFORDSHIRE															
Bedford Hospital NHS Trust N= F1 = 1	1	1													2
East and North Hertfordshire NHS Trust N= C/ST1 = 3; C/ST2 = 1; ST3= 1	2	1	1		2					1					7
Hertfordshire Partnership NHS Foundation Trust N= C/ST2 = 1; ST4+ = 1;									1			1			2
Luton and Dunstable Hospital NHS Foundation Trust N= F2 = 1 ; C/ST2 = 2; ST4+ = 3;	1		2	1		1	2								7
West Hertfordshire Hospitals NHS Trust N= F1 = 3; F2 = 1	2	1	1		2		2			3	2	1			14
TOTAL	6	3	4	1	4	1	4	0	1	4	2	2	0	0	32
ESSEX															
Basildon and Thurrock University Hospitals NHS Foundation Trust N= F1 = 1; C/ST1 = 1	2				1			1			1	1			6
Colchester Hospital University NHS Foundation Trust N= F1 = 2 ; C/ST1 = 2; ST4+ = 1 ;	3	1	2				1				1				8
Mid Essex Hospital Services NHS Trust															0
Southend University Hospital NHS Foundation Trust N= ST3= 1											1				1
South Essex Partnership University NHS Foundation Trust N= ST3= 1	1	1			1	1									4
The Princess Alexandra Hospital NHS Trust N= F1 = 1; C/ST1 = 1	1	2	1												4
NHS West Essex CCG - The Gold Street Surgery															0
TOTAL	7	4	3	0	2	1	1	1	0	0	3	1	0	0	23

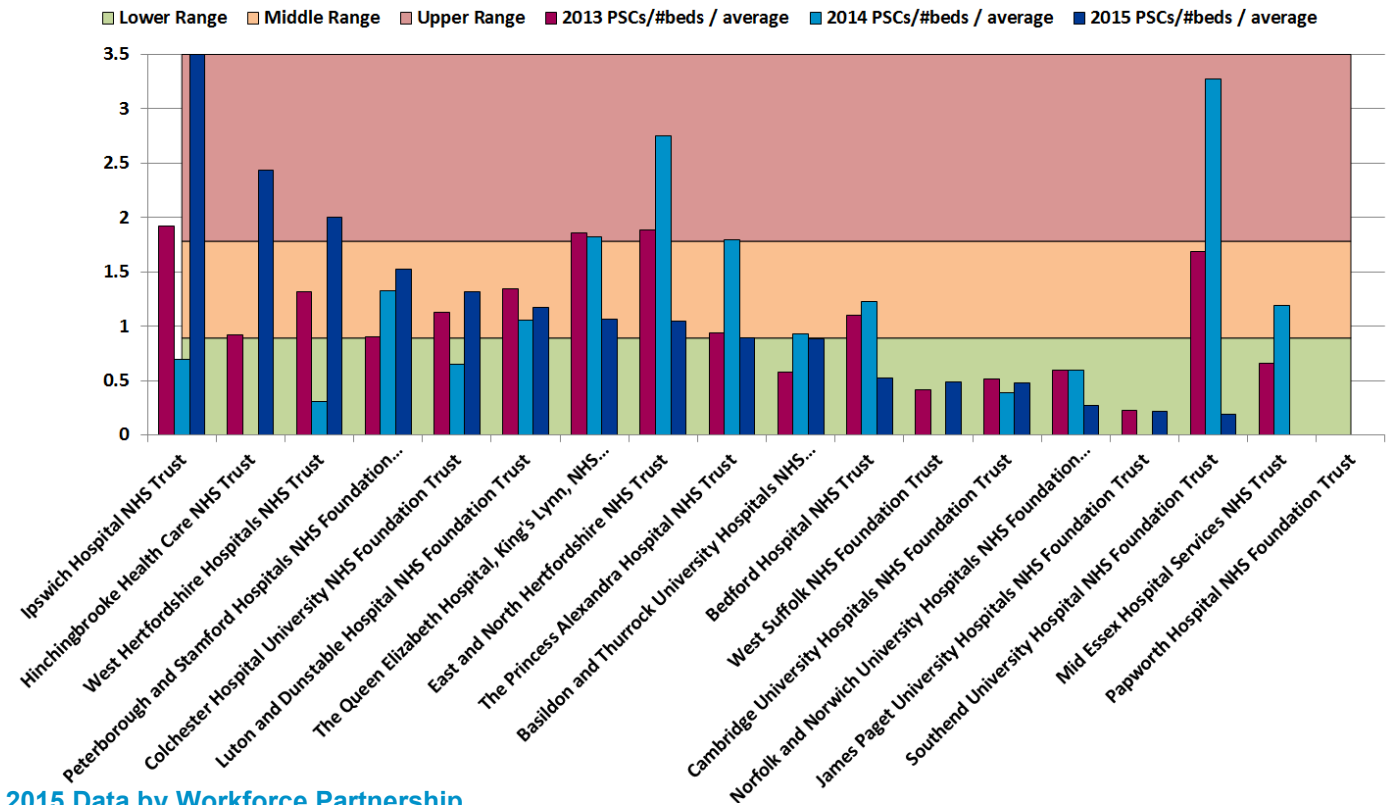
Patient Safety Concerns

These are the East of England Multiprofessional Deanery GMC NTS Patient Concerns for 2015 Collated by Local Education Provider (LEP) in March 2015. The data below has been broadly categorised to show the responses to the patient safety concerns question by LEP.

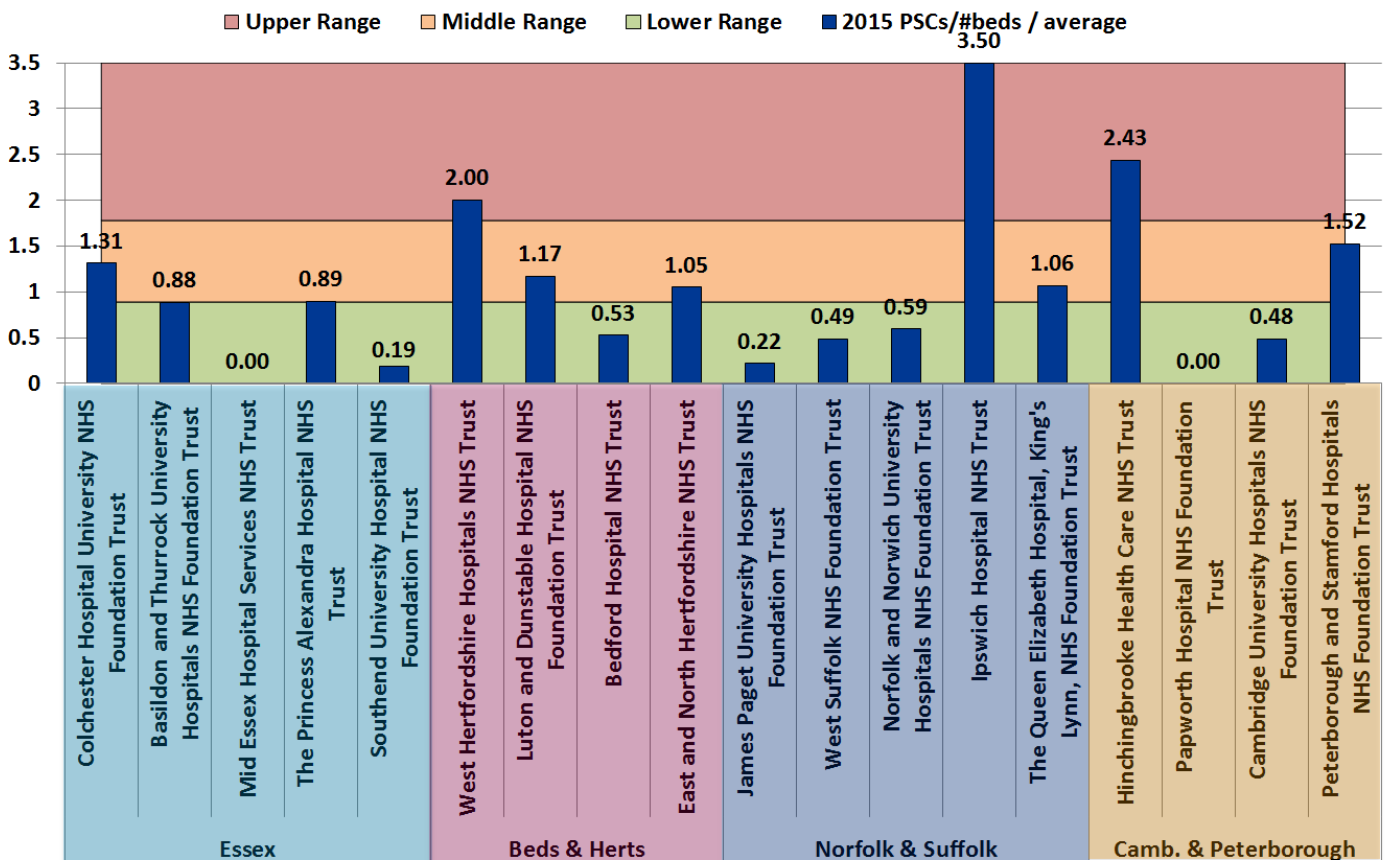
Areas of Concern identified	Understaffing	High Workload/ Work Intensity	Patient Care Provided Incl assessment, treatment	Lack of Team work	Inadequate Handover	Capacity [shortage of Beds]	Confidence Issues including lack of competence, induction; cross cover	Inadequate Supervision	Tension b/w education & service	Nursing Issues	Locum Issues incl quality, availability	Clinical Processes incl equipment; IT	Intercultural communication issues incl lang	Non PSC - Ethical Issue	Total
NORFOLK & SUFFOLK															
Ipswich Hospital NHS Trust N= F1 = 3; F2 = 1; ST4+ = 1;	5	2	3	2	2		2	2		1	1	1	1		22
James Paget University Hospitals NHS Foundation Trust N= ST4+ = 1;												1			1
Norfolk and Norwich University Hospitals NHS Foundation Trust N= F1 = 1; C/ST1 = 1	2		1												3
Norfolk and Suffolk NHS Foundation Trust N= C/ST2 = 1	1	1													2
The Queen Elizabeth Hospital, King's Lynn, NHS Foundation Trust N= F1 = 2; ST4+ = 1;	1						1			1	1		1		5
West Suffolk NHS Foundation Trust N= C/ST2 = 1	1		1												2
TOTAL	10	3	5	2	2	0	3	2	0	2	2	2	2	0	35
CAMBRIDGE & PETERBOROUGH															
Cambridge University Hospitals NHS Foundation Trust N= F2 = 1; ST4+ = 2;	1	1				1		1				1			5
Cambridgeshire and Peterborough NHS Foundation Trust N= C/ST1 = 2	1	2	2				1		1						7
Hinchingbrooke Health Care NHS Trust N= F1 = 2; F2 = 1	1	2	1						1	1					6
Papworth Hospital NHS Foundation Trust															0
Peterborough and Stamford Hospitals NHS Foundation Trust N= F1 = 3; C/ST1 = 1	2		2	1	1		1	1			1				9
TOTAL	5	5	5	1	1	1	2	2	2	1	1	1	0	0	27
OVERALL TOTAL N=	28	15	17	4	9	3	10	5	3	7	8	6	2	0	117

Acute Trust Patient Safety Concerns per bed

2013-2015 Trend Data



2015 Data by Workforce Partnership



Calculation: (2015 Patient Safety Concerns / # beds in trust) / average all EoE acute trusts. Ranges are calculated using the standard deviation, centred around the target, 0. The number of beds is the overnight and day only bed numbers taken from NHS England at <http://www.england.nhs.uk/statistics/statistical-work-areas/bed-availability-and-occupancy/>, Q4 data of applicable financial year.