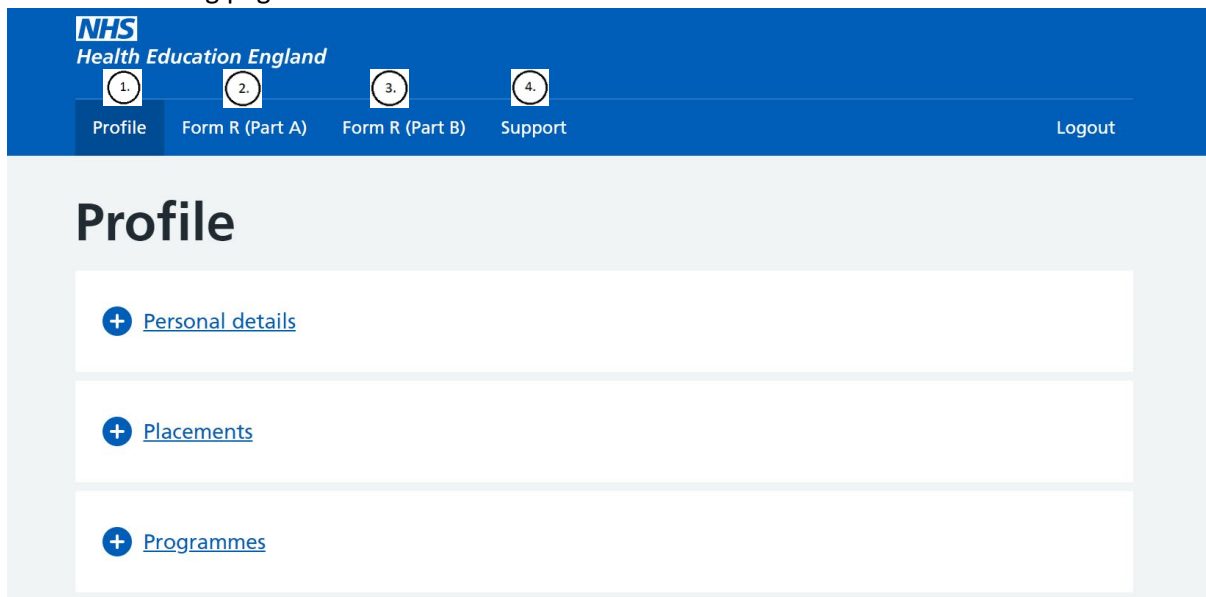


Using TIS Self-Service

Homepage

This is the landing page of TIS Self-Service.



There are multiple navigational tabs on the top crossbar:

1. Profile – contains your trainee data held in TIS
2. Form R (Part A) – enables you to complete your Form R (Part A) and view previous submissions
3. Form R (Part B) – enables you to complete your Form R (Part B) and view previous submissions
4. Support – enables you to contact your local office / another local office

Profile

Contains trainee details.

Click on the plus button to reveal more.

If any of your details require amending, please contact your local office via the support tab.

Personal Details

Contains your personal details:

Personal details

Fullname

Maiden name

Known As

Gender

Date of birth

Email

Telephone

Mobile

Address

Registration details

General Medical Council (GMC)

Placements

Site	Peace Hospice
Site Location	Cassiobury Drive WATFORD
Starts	18/04/2021
Ends	08/04/2022
Whole Time Equivalent	1
Specialty	Palliative Medicine
Grade	
Placement Type	In Post
Employing Body	St Helens and Knowsley Teaching Hospitals NHS Trust
Training Body	Peace Hospice

Site	LEICESTER CITY COUNCIL PUBLIC HEALTH
Site Location	City Hall 115 Charles Street Leicester Leicestershire
Starts	03/03/2021
Ends	02/03/2021
Whole Time Equivalent	Value not given
Specialty	
Grade	
Placement Type	In Post - Acting up
Employing Body	St Helens and Knowsley Teaching Hospitals NHS Trust
Training Body	Leicester City Council

[← Programmes](#)

Programme Name	ACCS Acute Medicine
Programme Number	YAH719
Programme Start date	01/03/2021
Programme End date	01/01/2026
Owner	Health Education England Yorkshire and the Humber
Curricula	ACF (NIHR funding) 01/01/2021 - 01/01/2024 ACCS - Acute Medicine 01/03/2021 - 01/03/2024

Form R (Part A)

Allows you to submit a new Form R (Part A) and view previous submissions.

Click 'Submit new form' to begin a new form.

Click 'Form submitted on...' and the date of any previously submitted form that you want to access.

Form R (Part A)

Trainee registration for Postgraduate Speciality Training

[Submit new form](#)

Submitted forms

[→ form submitted on 05/02/2021](#)

Full Time or % of Full Time Training

e.g. 0.1 for 10%, 0.25 for 25% etc.

Save & Exit

Continue to submit

Saving and exiting will enable you to continue from your draft form later by selecting 'Edit saved form'.

Form R (Part A)

Trainee registration for Postgraduate Speciality Training

Edit saved form

One point to note is that the form has inbuilt validation which may prevent you from saving / continuing to the next section if the page is incorrectly completed.

If this is the case, a red text box will appear asking you to 'Please check highlighted fields'.

Training Grade is a mandatory field therefore a grade must be selected.

The Training % must be a value between 0 to 1 (inclusive). In the example below, 12 is clearly greater than this, so an error message is generated to prompt you to fix it.

Programme

Training Grade
Training Grade is required
-- Please select --

Start Date
01/03/2021

Post type or Appointment
SUBSTANTIVE

Full Time or % of Full Time Training
Programme Full Time Equivalent in Training needs to be a number less than or equal to 1 and greater than zero (a maximum of 2 decimal places)
12

Please check highlighted fields

Once these errors are corrected, will you be able to save and progress in the form.

Once submitted, you can save a pdf copy of your form by following the instructions in the highlighted hyperlink.

Form R (Part A)

Trainee registration for Postgraduate Speciality Training

[← Go back to list](#)

[How to export form as PDF](#)

Form R (Part B)

Form R (Part B)

Self-declaration for the Revalidation of Doctors in Training

[Submit new form](#)

Submitted forms

 [form submitted on 29/04/2021](#)

Support

▶ [Got a question?](#)

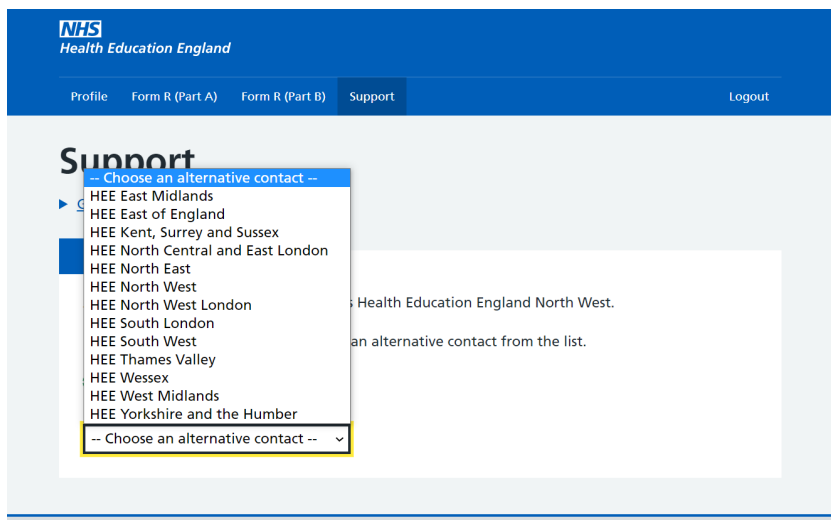
Contact

According to our records, your contact is Health Education England North West.

Please click on the link below or choose an alternative contact from the list.

 [medicine.nw](#)

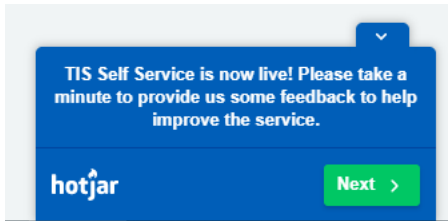
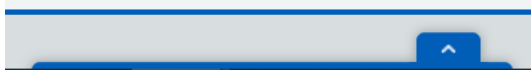
-- Choose an alternative contact -- ▾



The screenshot shows the NHS Health Education England Support page. The top navigation bar includes the NHS logo, 'Health Education England', and menu items for 'Profile', 'Form R (Part A)', 'Form R (Part B)', 'Support', and 'Logout'. The main content area features the 'Support' heading and a dropdown menu that is open, displaying a list of regional options: HEE East Midlands, HEE East of England, HEE Kent, Surrey and Sussex, HEE North Central and East London, HEE North East, HEE North West, HEE North West London, HEE South London, HEE South West, HEE Thames Valley, HEE Wessex, HEE West Midlands, and HEE Yorkshire and the Humber. The dropdown menu also includes a selection option: '-- Choose an alternative contact -- ▾'. The background content of the page is partially visible, showing the text from the previous image.

Feedback

How to Leave Feedback



HEE.TIS@hee.nhs.uk