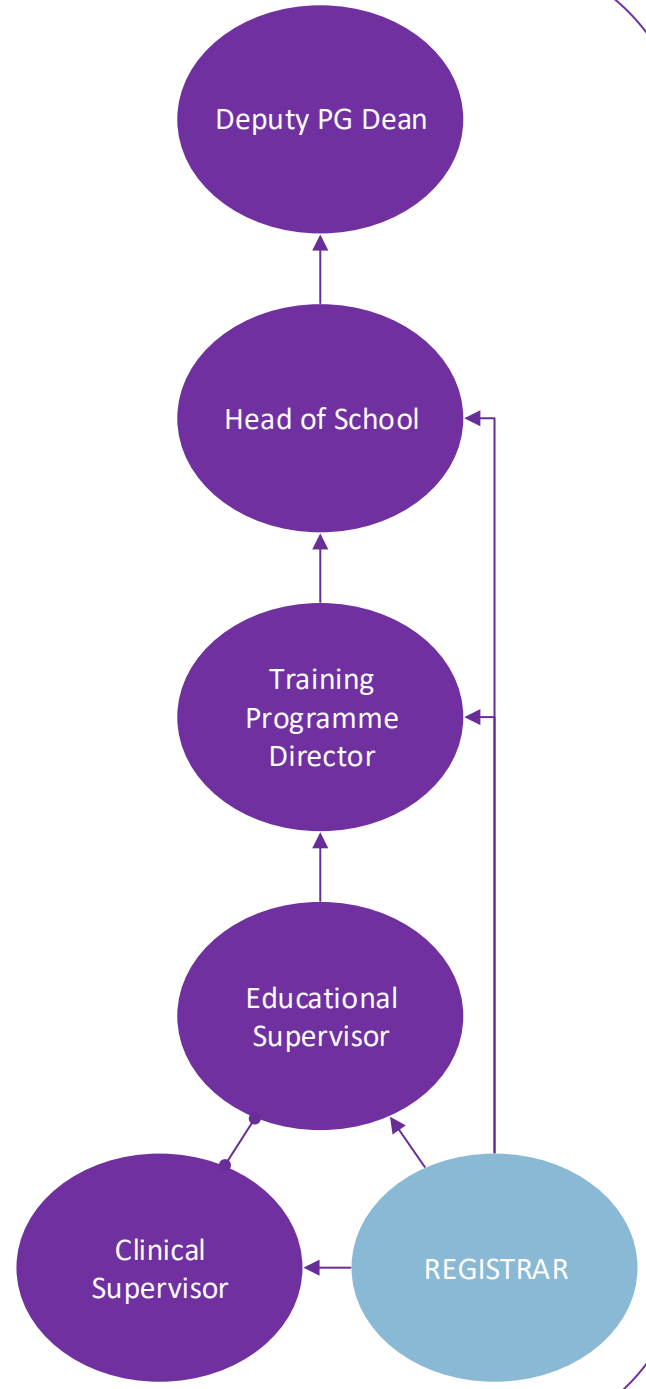
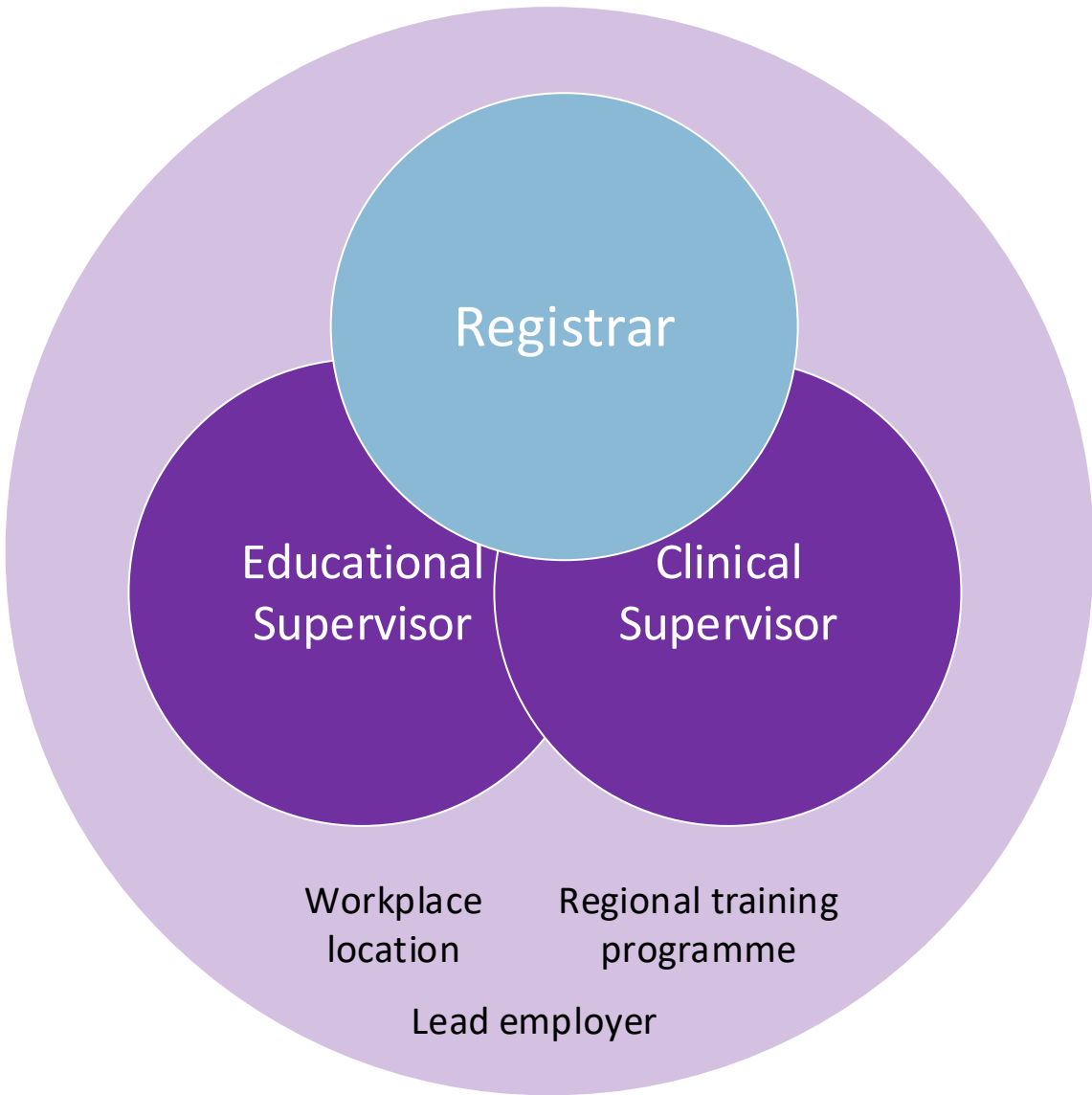


**HEE East of England School of Public Health  
Management of Specialist Trainees  
Overview of Educational  
Management**



# HEE East of England School of Public Health Management of Specialist Trainees Workplace Host Locations

GMC accredited training location  
Examples: Local Authority, CCG, HEI, NHS  
Trust, PHE/NIHP  
(a single person may hold multiple roles)

Provision of  
workplace based  
training and  
assessment

Links to local system  
training  
opportunities

Support for  
wellbeing including  
reasonable  
adjustments

Location  
accreditation and  
quality

Specialist Training  
Committee  
(external to host)

Quality monitoring  
and improvement  
systems

Head of  
Department  
(eg DPH)

Location Training  
Lead

Management of  
escalated issues  
with TPD

Oversight of  
educational  
progression

Educational  
Supervisor  
[External to host  
organisation]

Co-ordination

Clinical  
Supervisor

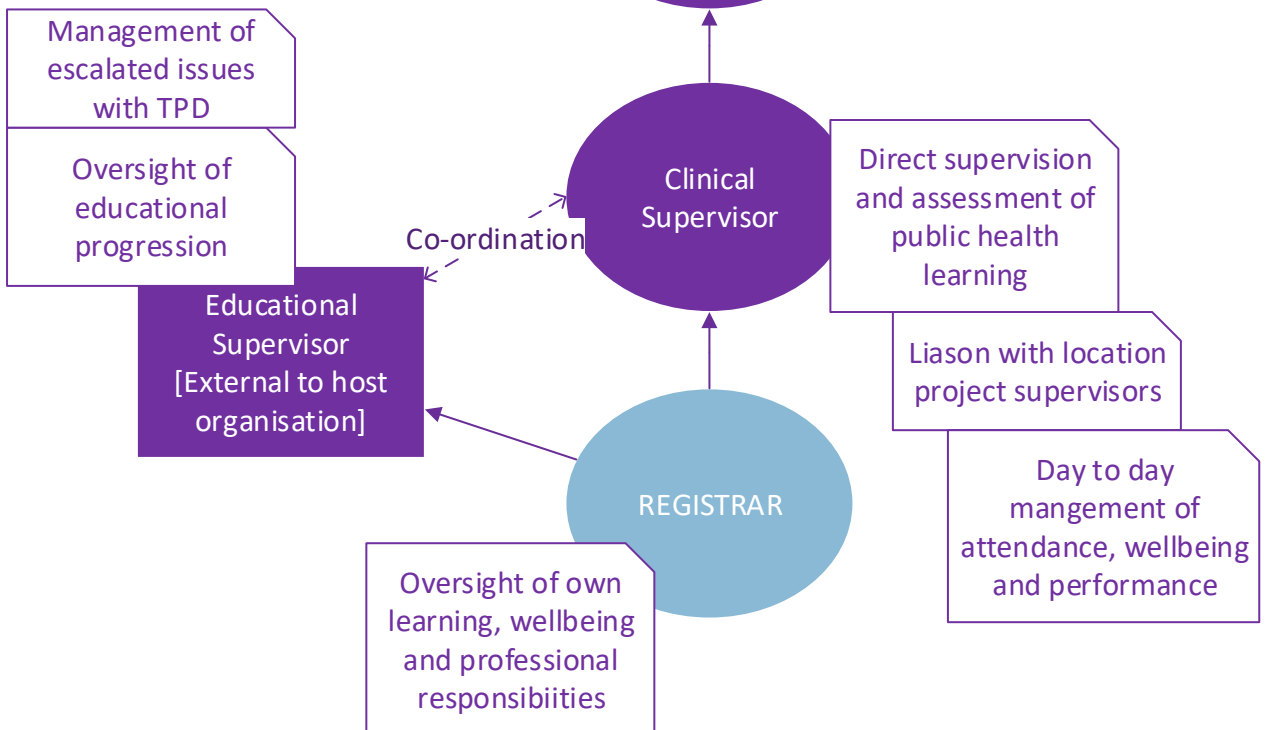
Direct supervision  
and assessment of  
public health  
learning

Liason with location  
project supervisors

REGISTRAR

Oversight of own  
learning, wellbeing  
and professional  
responsibilities

Day to day  
management of  
attendance, wellbeing  
and performance



**HEE East of England School of Public Health  
Management of Specialist Trainees  
Lead Employer**

St Helen's and Knowsley NHS Trust Lead  
Employer Services

Human Resources  
and Payroll

Safeguarding and  
clinical governance

Occupational Health

Professionalism

Mandatory training

**HEE East of England School of Public Health  
Management of Specialist Trainees  
Regional Training Programme**

EoE HEE School of Public Health  
Public Health Registrars in the East of  
England (PHREE)  
HEE EoE Systems

Annual Review of  
Competence  
Progression  
(appraisal)

Regional training  
provision  
including blended  
learning and exam  
support

Oversight of trainee  
placement moves

Peer support and  
buddying

Commissioning of  
Lead Employer  
Services

Provision of a PH  
Masters Degree

Supervisor training,  
accreditation and  
development

Oversight of  
educational quality