

*Developing people
for health and
healthcare*

Health Education East of England GMC National
Training Survey Analysis 2015: Trust Report

**Southend University
Hospital NHS
Foundation Trust**



Narrative

Trust Indicators

The dashboard for the Southend University Hospital NHS Foundation Trust illustrates where it stands relative to the national mean and the other trusts nationally participating in the National Training Survey (NTS). Four of the 14 indicators lie in the first quartile, eight in the second, two in the third and none in the fourth quartile.

The chart illustrating the means by indicator from 2012 to 2015 shows the indicators are on an upward trend. Southend's Means by Indicator chart for 2014 and 2015 compared to the 2015 national mean illustrates that the indicators means are very close to the national means and are mostly up from last year.

Programme Group Indicators

The chart for Overall Satisfaction for each programme group illustrates where Southend's programme groups lie relative to each programme group's national mean. The quartiles were calculated for each programme group using the means of each trust participating in the NTS that runs that particular programme group. Southend has five programme groups in the first quartile, five in the second, six in the third quartile and eleven in the fourth quartile. Southend is in the bottom 25% of trusts which run the programme groups in quartile one while it is in the top 25% of trusts which run each of the programme groups which lie in quartile four.

Outliers

The outliers by programme group and level show which areas are above (green/A) and below (red/B) outliers. A programme group is an outlier if it is in the top or bottom of the GMC calculated quartiles and the confidence intervals do not overlap those of the national mean.

Respiratory Medicine has the most negative outliers with three while the GP Programme for Emergency Medicine has the most positive outliers with seven.

The chart of net programme group outliers for 2012-2015 illustrates the net outliers for each programme group by trust, with positive outliers getting value +1 and negative outliers getting value -1. Southend had a net outlier value of -7 in 2012, -20 in 2013, 3 in 2014 and 19 in 2015.

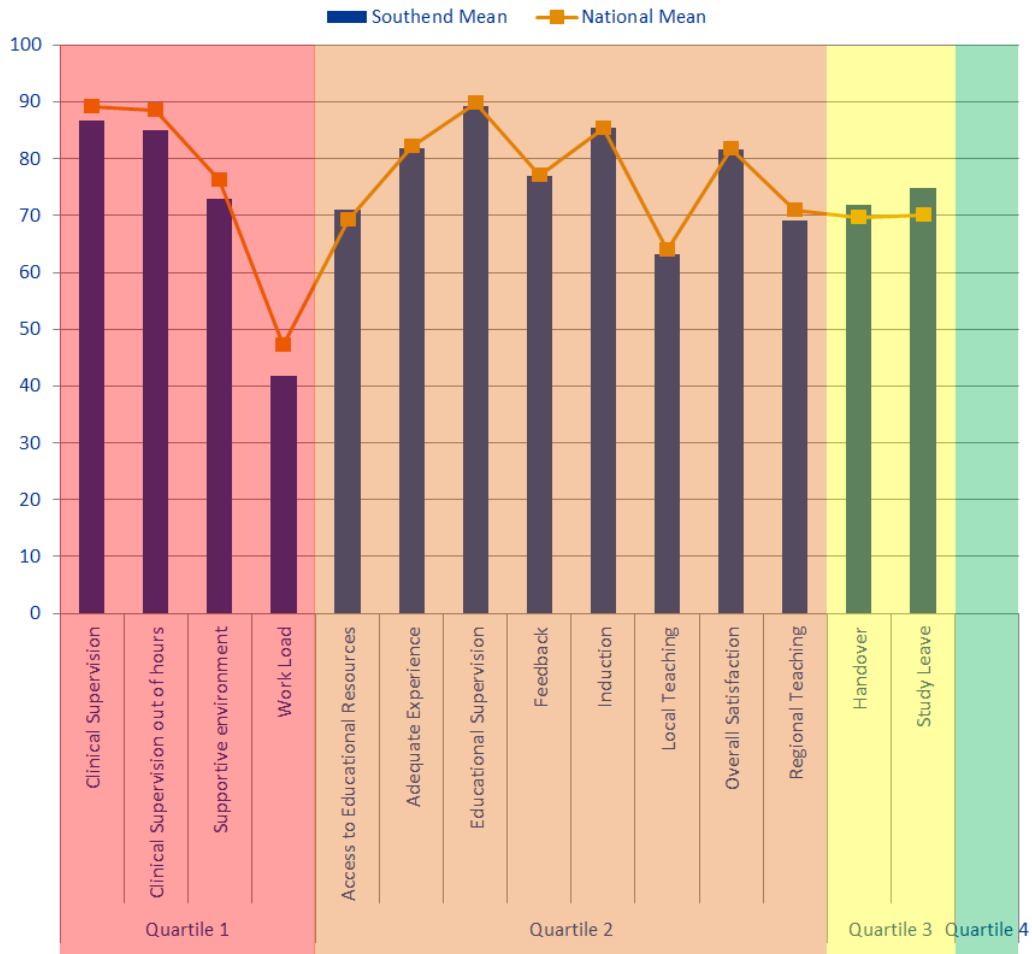
Rankings

The rankings chart shows where Southend comes in comparison to the other trusts delivering each of its programme groups for Overall Satisfaction. The graph is calculated by dividing by the total number of trusts who reported information for that programme group in order to be able to directly compare each programme group, no matter how many trusts deliver it. Southend has one programme group which has remained in the bottom quartile for the last 3 years, Paediatrics. From 2013 to 2015 Anaesthetics F2, the GP Programme for Emergency Medicine, Rheumatology and Surgery F2 have moved from the bottom quartile to the top quartile.

Patient Safety Concerns

Southend has one patient safety concern in Locum Issues. Southend is in the lower range for concerns per bed and this is much lower than in 2013 and 2014.

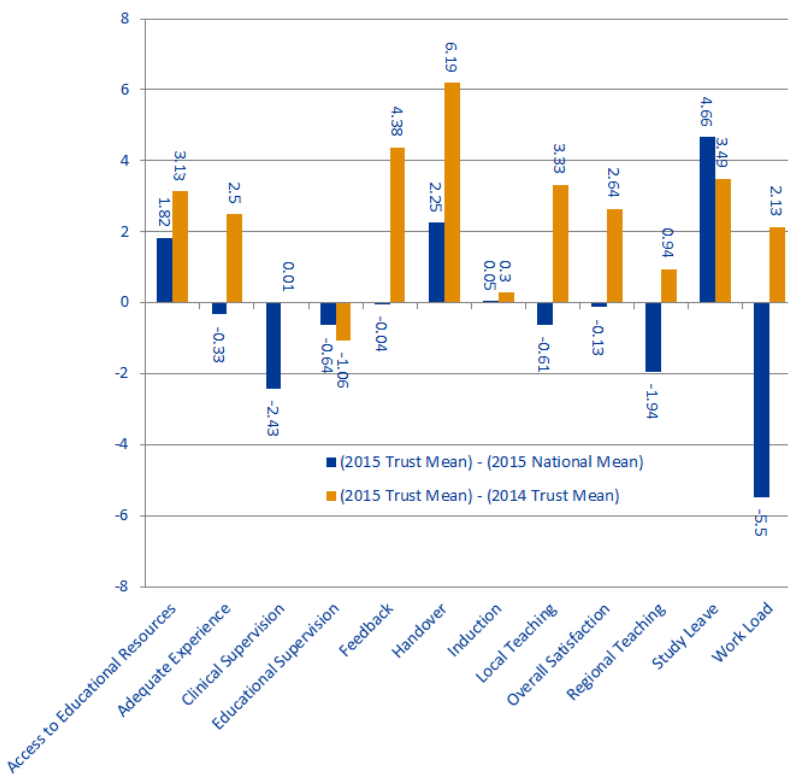
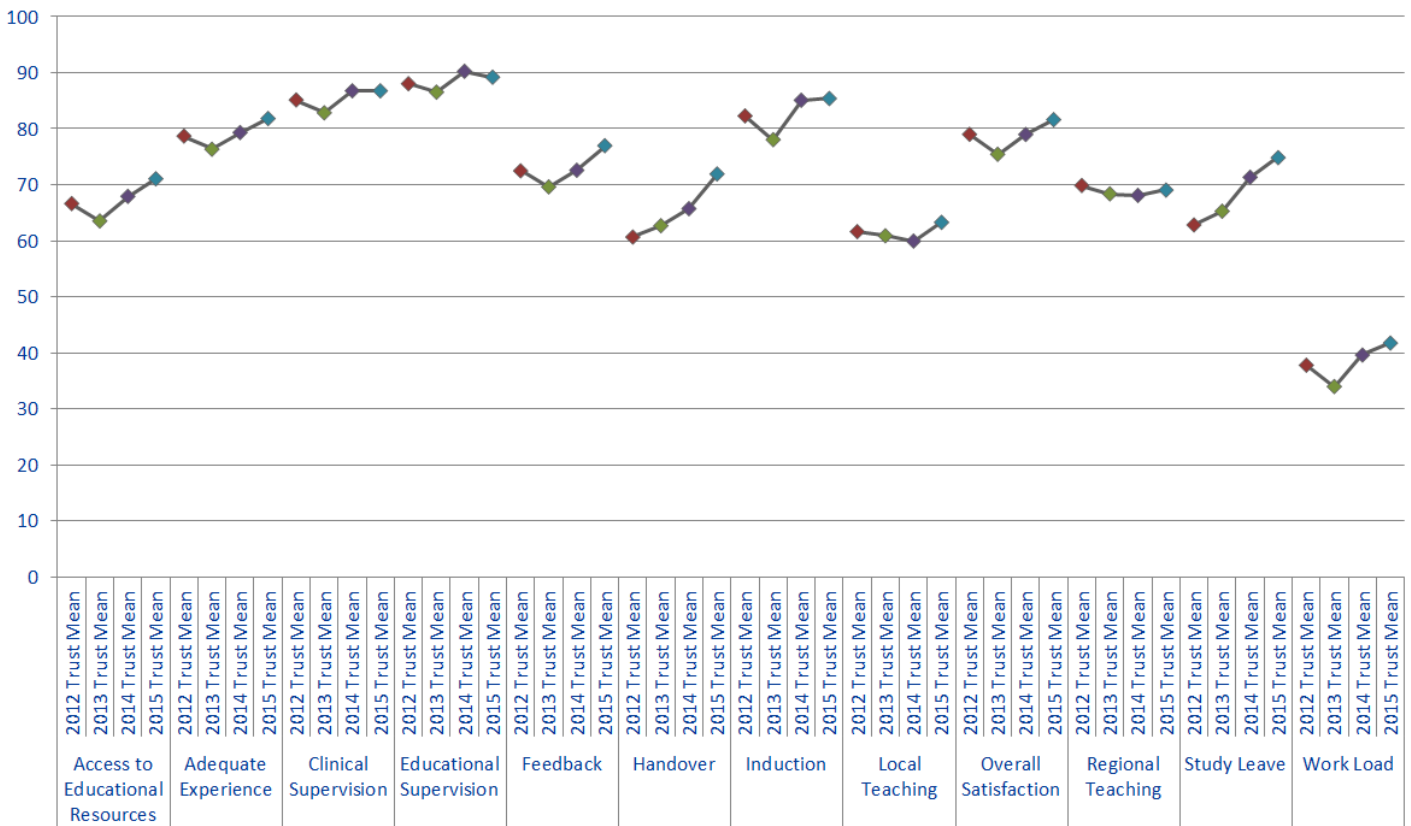
Dashboard



Quartile	Indicator	Southend Mean	National Mean
Quartile 1	Clinical Supervision	86.76	89.19
	Clinical Supervision out of hours	85.07	88.44
	Supportive environment	72.84	76.14
	Work Load	41.75	47.25
Quartile 2	Access to Educational Resources	71.06	69.24
	Adequate Experience	81.81	82.14
	Educational Supervision	89.18	89.82
	Feedback	76.97	77.01
	Induction	85.38	85.33
	Local Teaching	63.29	63.9
	Overall Satisfaction	81.61	81.74
	Regional Teaching	69.04	70.98
Quartile 3	Handover	71.92	69.67
	Study Leave	74.83	70.17
Quartile 4			

The quartiles are calculated from the means for every trust that participated in the National Training Survey (NTS). The quartiles for each indicator are calculated separately. Therefore if a trust's indicator fell within the first quartile, then this means that the trust fell within the bottom 25% of trusts for that indicator. If a trust fell within the fourth quartile, then this means that the trust fell within the top 25% of trusts for that indicator.

Trend Data



Indicator	2015 National Mean	2015 Trust Mean	2014 Trust Mean	(2015 Trust Mean) - (2015 National Mean)	(2015 Trust Mean) - (2014 Trust Mean)
Access to Educational Resources	69.24	71.06	67.93	1.82	3.13
Adequate Experience	82.14	81.81	79.31	-0.33	2.5
Clinical Supervision	89.19	86.76	86.75	-2.43	0.01
Educational Supervision	89.82	89.18	90.24	-0.64	-1.06
Feedback	77.01	76.97	72.59	-0.04	4.38
Handover	69.67	71.92	65.73	2.25	6.19
Induction	85.33	85.38	85.08	0.05	0.3
Local Teaching	63.9	63.29	59.96	-0.61	3.33
Overall Satisfaction	81.74	81.61	78.97	-0.13	2.64
Regional Teaching	70.98	69.04	68.1	-1.94	0.94
Study Leave	70.17	74.83	71.34	4.66	3.49
Work Load	47.25	41.75	39.62	-5.5	2.13

2015 trust mean lies above the national mean, but is below last year's trust mean

2015 trust mean lies above both the national mean and last year's trust mean

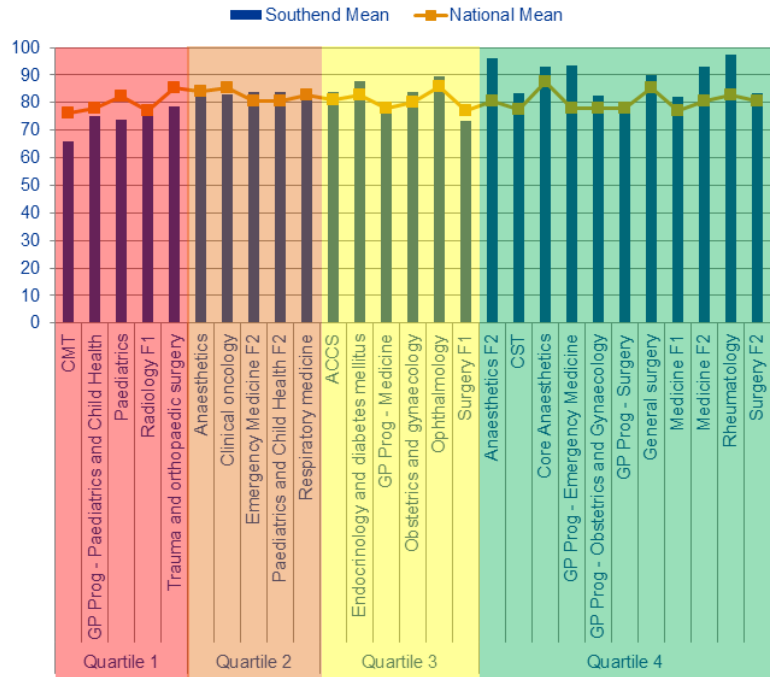
2015 trust mean lies below the national mean but above last year's trust mean

2015 trust mean lies below both the national mean and last year's trust mean

Overall Satisfaction by Programme Group

Programme Groups by Quartile

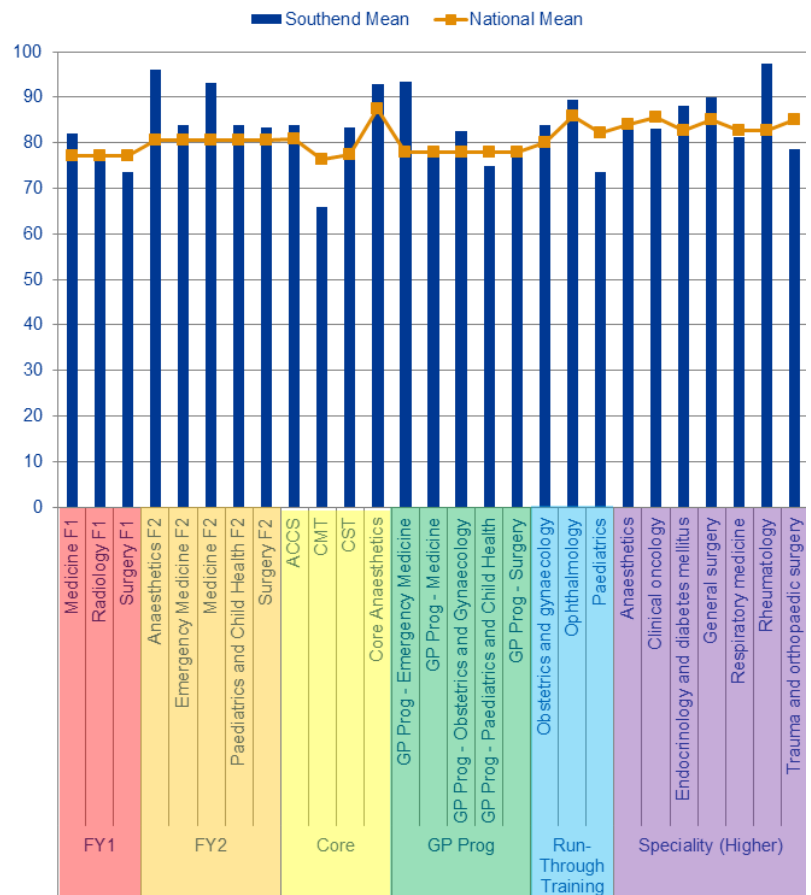
Quartiles	Programme Group	Southend Mean	National Mean
Quartile 1	CMT	66	76.35
	GP Prog - Paediatrics and Child Health	75	77.89
	Paediatrics	73.6	82.29
	Radiology F1	76	77.14
	Trauma and orthopaedic surgery	78.67	85.18
Quartile 2	Anaesthetics	83.2	83.94
	Clinical oncology	83	85.59
	Emergency Medicine F2	84	80.57
	Paediatrics and Child Health F2	84	80.57
	Respiratory medicine	81.33	82.69
Quartile 3	ACCS	84	80.82
	Endocrinology and diabetes mellitus	88	82.69
	GP Prog - Medicine	78.67	77.89
	Obstetrics and gynaecology	84	79.96
	Ophthalmology	89.33	85.91
Quartile 4	Surgery F1	73.54	77.14
	Anaesthetics F2	96	80.57
	CST	83.33	77.42
	Core Anaesthetics	93	87.4
	GP Prog - Emergency Medicine	93.33	77.89
	GP Prog - Obstetrics and Gynaecology	82.67	77.89
	GP Prog - Surgery	77.33	77.89
	General surgery	90	85.18
	Medicine F1	82	77.14
	Medicine F2	93.14	80.57
Rheumatology	97.33	82.69	
Surgery F2	83.33	80.57	



Quartiles are calculated from the means for every trust that ran that programme group. The quartiles for each programme group are calculated separately. Therefore if a trust's speciality falls into the first quartile this means this speciality had an overall satisfaction mean that fell within the bottom 25% of trusts in the UK running this speciality.

Programme Groups by Level

Level	Programme Group	Southend Mean	National Mean
FY1	Medicine F1	82.00	77.14
	Radiology F1	76.00	77.14
	Surgery F1	73.54	77.14
FY2	Anaesthetics F2	96.00	80.57
	Emergency Medicine F2	84.00	80.57
	Medicine F2	93.14	80.57
Core	Paediatrics and Child Health F2	84.00	80.57
	Surgery F2	83.33	80.57
	ACCS	84.00	80.82
	CMT	66.00	76.35
	CST	83.33	77.42
GP Prog	Core Anaesthetics	93.00	87.40
	GP Prog - Emergency Medicine	93.33	77.89
	GP Prog - Medicine	78.67	77.89
Run-Through Training	GP Prog - Obstetrics and Gynaecology	82.67	77.89
	GP Prog - Paediatrics and Child Health	75.00	77.89
	GP Prog - Surgery	77.33	77.89
Speciality (Higher)	Obstetrics and gynaecology	84.00	79.96
	Ophthalmology	89.33	85.91
	Paediatrics	73.60	82.29
	Anaesthetics	83.20	83.94
	Clinical oncology	83.00	85.59
Speciality (Higher)	Endocrinology and diabetes mellitus	88.00	82.69
	General surgery	90.00	85.18
	Respiratory medicine	81.33	82.69
	Rheumatology	97.33	82.69
	Trauma and orthopaedic	78.67	85.18



Programme Group Outliers

A Above Outlier
B Below Outlier

Programme Groups	Overall Satisfaction	Patient Safety					Educational Development						Training Environment	
		Clinical Supervision	Clinical Supervision Out of Hours	Induction	Handover	Work Load	Education Supervision	Adequate Experience	Feedback	Teaching Local	Teaching Regional	Supportive Environment	Study Leave	Access to Educational Resources
ACCS														
Anaesthetics											A			
Anaesthetics F2	A												A	
CMT			B											
CST														
Clinical oncology			A										A	
Core Anaesthetics										A				A
Emergency Medicine F2						A								
Endocrinology and diabetes mellitus				A					A					
GP Prog - Emergency Medicine	A	A		A	A				A					A
GP Prog - Medicine														
GP Prog - Obstetrics and Gynaecology				A	A					A				
GP Prog - Paediatrics and Child Health														
GP Prog - Surgery						A								
General surgery														
Medicine F1														
Medicine F2	A					B				A				
Obstetrics and gynaecology			B							A				A
Ophthalmology												B		
Paediatrics	B												B	
Paediatrics and Child Health F2														
Radiology F1						A								
Respiratory medicine													B	
Rheumatology	A									A				B
Surgery F1														
Surgery F2														
Trauma and orthopaedic surgery														
Anaesthetics														
Anaesthetics F2														
CMT														
Core Anaesthetics														
Emergency Medicine F2														
Geriatric medicine	A	A								A				
GP Prog - Obstetrics and Gynaecology	B													
GP Prog - Paediatrics and Child Health														A
Obstetrics and gynaecology														
Paediatrics	B													
Radiology F1	A	A												A
Surgery F2	B													
Trauma and orthopaedic surgery														
Anaesthetics														
Anaesthetics F2														
Clinical oncology	B	B												B
Emergency Medicine F2														B
General surgery														
Geriatric medicine	A	A												A
GP Prog - Emergency Medicine														
GP Prog - Obstetrics and Gynaecology														A
GP Prog - Paediatrics and Child Health														
Medicine F1														
Medicine F2														
Obstetrics and gynaecology														B
Paediatrics	B													
Paediatrics and Child Health F2														
Radiology F1														
Rheumatology	B	B												
Surgery F1														
Surgery F2	B	B												

Programme Group Outliers

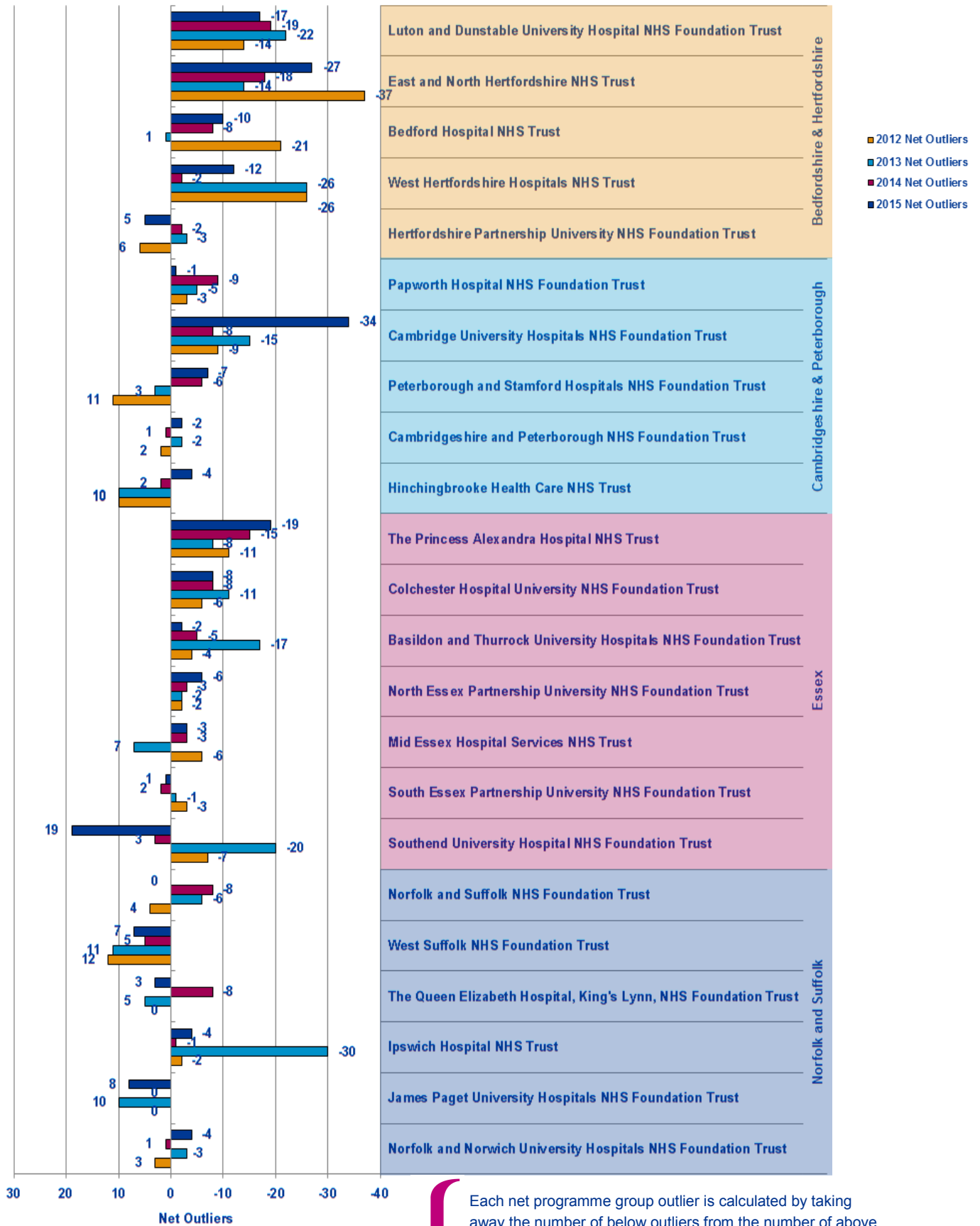
Programme Groups	Patient Safety			Educational Development				Training Environment/ Infrastructure	GREEN OUTLIERS			RED OUTLIERS			2014 to 2015 CHANGE ↑ BETTER → STATUS QUO ↓ WORSE								
	Overall Satisfaction	Clinical Supervision out of hours	Handover	Induction	Workload	Educational Supervision	Adequate Experience	Feedback	Local Teaching	Regional Teaching	Study Leave	Supportive environment	Access to Educational Resources	2013		2014	2015						
ACCS																							
Anaesthetics															1	1	1						
Anaesthetics F2														1	1	2							
CMT																	1	1					
CST																							
Clinical oncology																2	6						
Core Anaesthetics															1	2	1						
Emergency Medicine F2															1	1	3	1					
Endocrinology and diabetes mellitus																2							
GP Prog - Emergency Medicine																7	1						
GP Prog - Medicine																							
GP Prog - Obstetrics and Gynaecology															1	1	3	2					
GP Prog - Paediatrics and Child Health																2	1						
GP Prog - Surgery																	1						
General surgery																1							
Medicine F1																	1						
Medicine F2																2	2	1					
Obstetrics and gynaecology																2	3	1					
Ophthalmology																		1					
Paediatrics																	1	3	2				
Paediatrics and Child Health F2																	1						
Radiology F1																1	5	1					
Respiratory medicine																	1		3				
Rheumatology																	2	4	1				
Surgery F1																	2						
Surgery F2																		4	1				
Trauma and orthopaedic surgery																	1		3				
Total																	4	12	29	30	14	10	↑↑

This table represents the outliers for the last three years. A place is coloured if it is an above (Green) or below (Red) outlier in 2015. If an outlier in 2015 was not an outlier in either 2014 or 2013 then it is left as a pale colour and with nothing written in it. However if the outlier in 2015 has been an outlier multiple times over the last three years then the number of times it has been a positive or negative outlier is written in its box and the colour of the box is darkened correspondingly. This is useful for seeing where continuous issues or positive areas lie for each programme group.

On the right hand side of the table is a count of how many outliers there were for each programme group in each of the years. This can be used to see if programme groups are in general improving or getting worse.

The red and green arrows on the bottom left hand side represent whether the total number of positive and negative outliers has improved from 2014 to 2015.

Net Programme Group Outliers



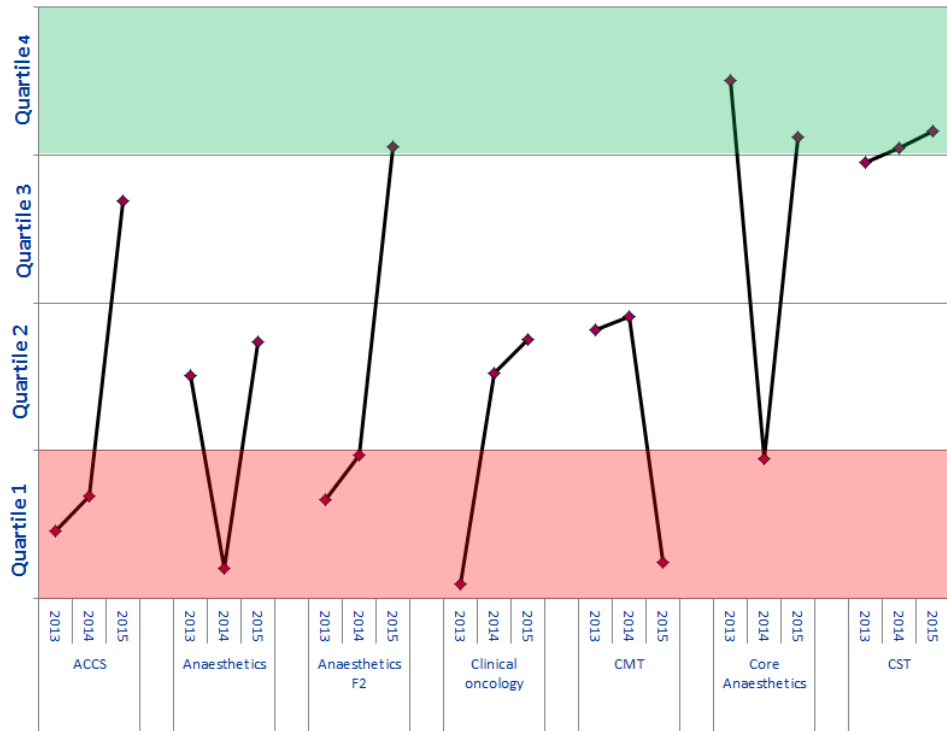
Each net programme group outlier is calculated by taking away the number of below outliers from the number of above outliers occurring across all programme groups for that trust in that year. Each trust has had their net outlier figure calculated for the last four years, permitting us to see the general trend for each trust and each workforce partnership.

Programme Group Overall Satisfaction Rankings

Trust Ranking

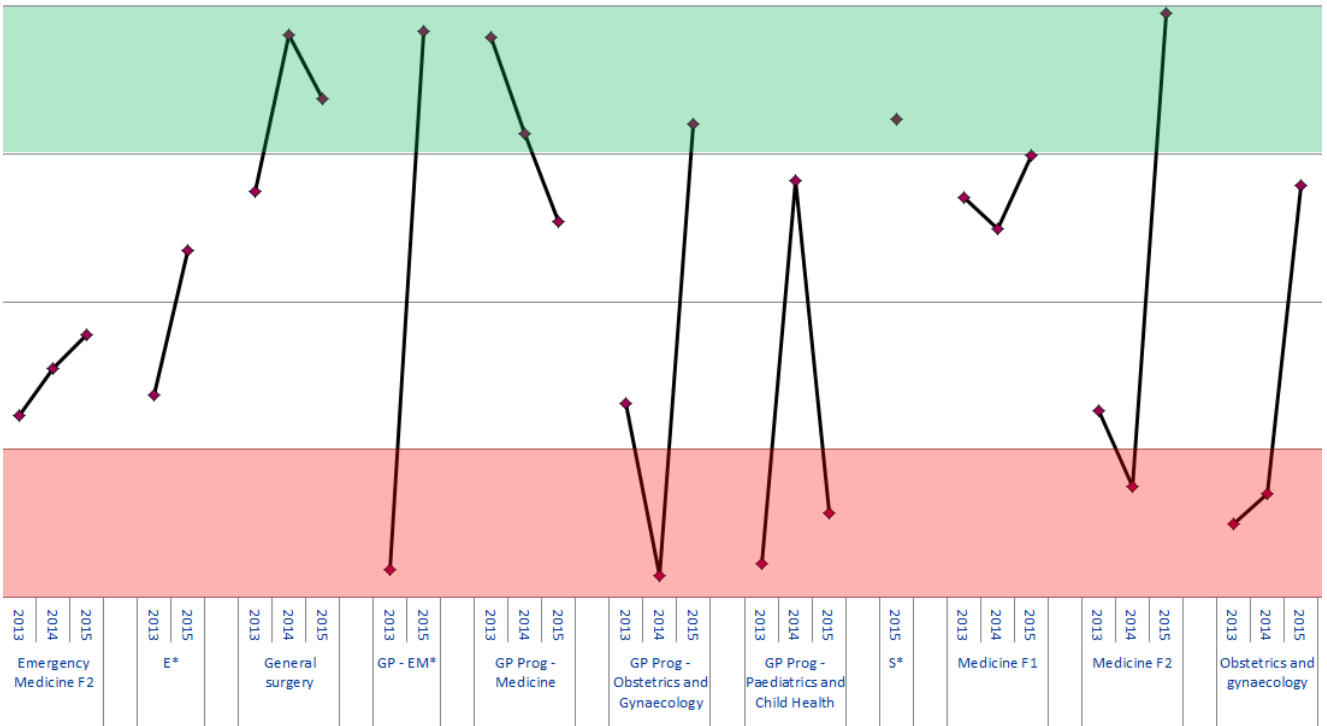
Total Number of Trusts Nationally Reporting for this Programme Group

115	110	39		99	149	86		25	25	8		39	26	23		92	89	154		18	106	30		40	35	30
130	133	119		159	157	152		30	33	34		40	42	41		169	170	164		145	139	136		153	147	143



Trust ranking of each Programme Group for 2013-2015 is calculated by ordering the means of the Overall Satisfaction of all trusts reporting for that programme group with n>2 respondents. Quartiles have been calculated from means of the other trusts, meaning if a trust is in the top quartile then it is in the top 25% of trusts which deliver that programme group.

103	93	80		25	19		45	7	21		119	5		8	34	54		86	130	25		129	40	114		9		54	63	41		110	134	2		134	126	45
149	152	144		38	46		144	144	135		125	118		154	158	148		128	135	126		137	136	133		47		167	167	162		161	165	161		153	153	148

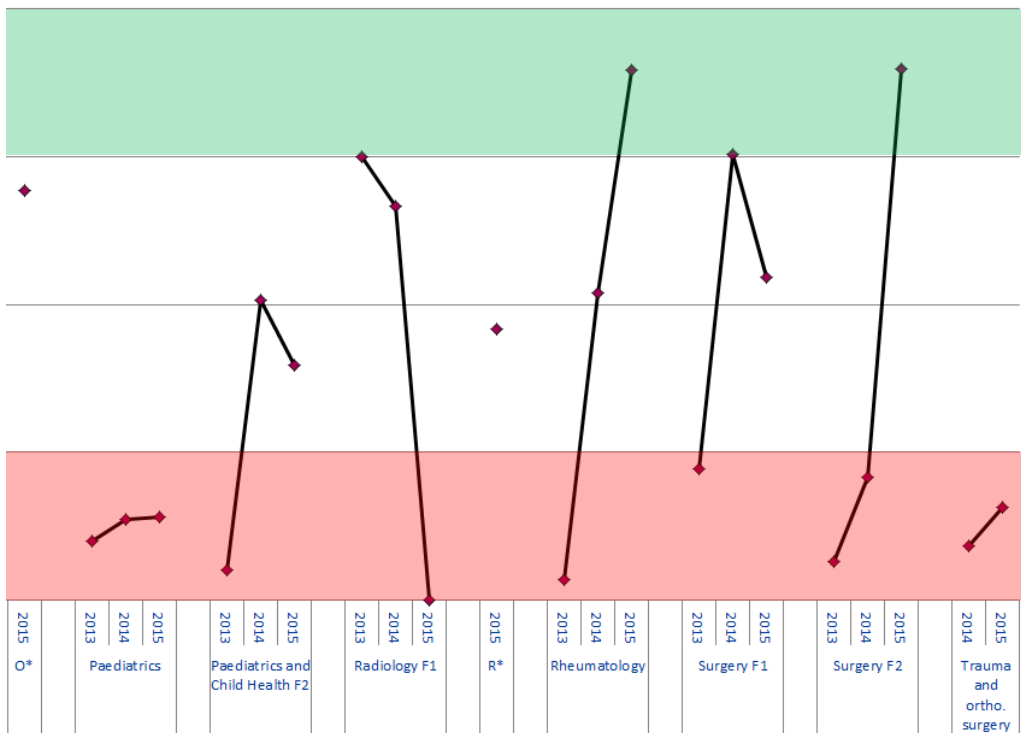


E* = Endocrinology and diabetes mellitus GP - EM* = GP Programme - Emergency Medicine S* = GP Programme - Surgery

Programme Group Overall Satisfaction Rankings

Trust Ranking
Total Number of Trusts Nationally Reporting for this Programme Group

23	154	139	139	55	30	38	1	1	2	46	27	12	3	129	41	73	141	121	15	119	112
75	171	161	162	58	61	63	4	3	2	85	28	25	29	166	166	161	151	153	148	131	133



O* = Ophthalmology

R* = Respiratory Medicine

Trust ranking of each Programme Group for 2013-2015 is calculated by ordering the means of the Overall Satisfaction of all trusts reporting for that programme group with n>2 respondents. Quartiles have been calculated from means of the other trusts, meaning if a trust is in the top quartile then it is in the top 25% of trusts which deliver that programme group.

Patient Safety Concerns

These are the East of England Multiprofessional Deanery GMC NTS Patient Concerns for 2015 Collated by Local Education Provider (LEP) in March 2015. The data below has been broadly categorised to show the responses to the patient safety concerns question by LEP.

Areas of Concern identified	Understaffing	High Workload/ Work Intensity	Patient Care Provided incl assessment, treatment	Lack of Team work	Inadequate Handover	Capacity [shortage of Beds]	Confidence issues including lack of competence, induction; cross cover	Inadequate Supervision	Tension b/w education & service	Nursing Issues	Locum issues incl quality, availability	Clinical Processes incl equipment; IT	Intercultural communication issues incl lang	Non PSC - Ethical Issue	Total
BEDFORD & HERTFORDSHIRE															
Bedford Hospital NHS Trust N= F1 = 1	1	1													2
East and North Hertfordshire NHS Trust N= C/ST1 = 3; C/ST2 = 1; ST3= 1	2	1	1		2					1					7
Hertfordshire Partnership NHS Foundation Trust N= C/ST2 = 1; ST4+ = 1;									1			1			2
Luton and Dunstable Hospital NHS Foundation Trust N= F2 = 1 ; C/ST2 = 2; ST4+ = 3;	1		2	1		1	2								7
West Hertfordshire Hospitals NHS Trust N= F1 = 3; F2 = 1	2	1	1		2		2			3	2	1			14
TOTAL	6	3	4	1	4	1	4	0	1	4	2	2	0	0	32
ESSEX															
Basildon and Thurrock University Hospitals NHS Foundation Trust N= F1 = 1; C/ST1 = 1	2				1			1			1	1			6
Colchester Hospital University NHS Foundation Trust N= F1 = 2 ; C/ST1 = 2; ST4+ = 1 ;	3	1	2				1				1				8
Mid Essex Hospital Services NHS Trust															0
Southend University Hospital NHS Foundation Trust N= ST3= 1											1				1
South Essex Partnership University NHS Foundation Trust N= ST3= 1	1	1			1	1									4
The Princess Alexandra Hospital NHS Trust N= F1 = 1; C/ST1 = 1	1	2	1												4
NHS West Essex CCG - The Gold Street Surgery															0
TOTAL	7	4	3	0	2	1	1	1	0	0	3	1	0	0	23

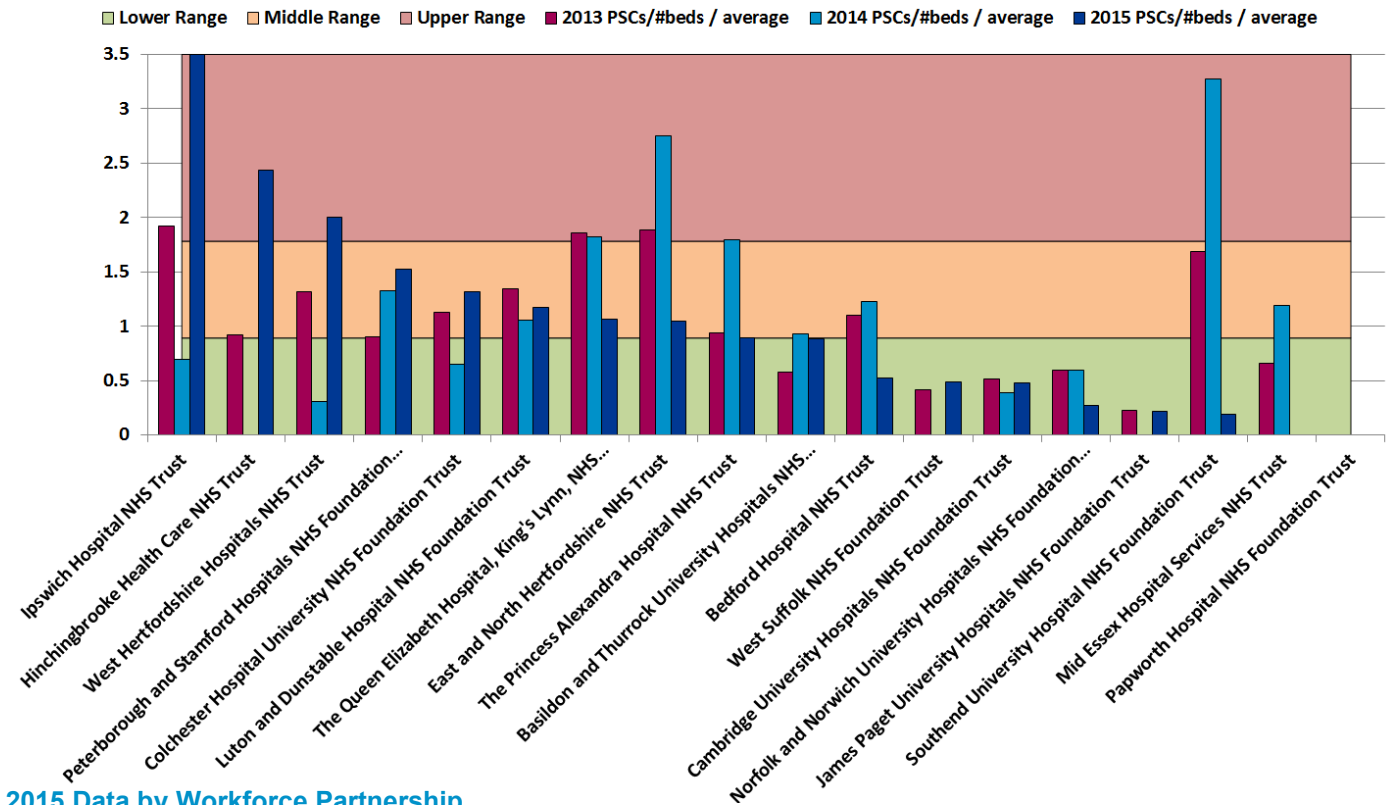
Patient Safety Concerns

These are the East of England Multiprofessional Deanery GMC NTS Patient Concerns for 2015 Collated by Local Education Provider (LEP) in March 2015. The data below has been broadly categorised to show the responses to the patient safety concerns question by LEP.

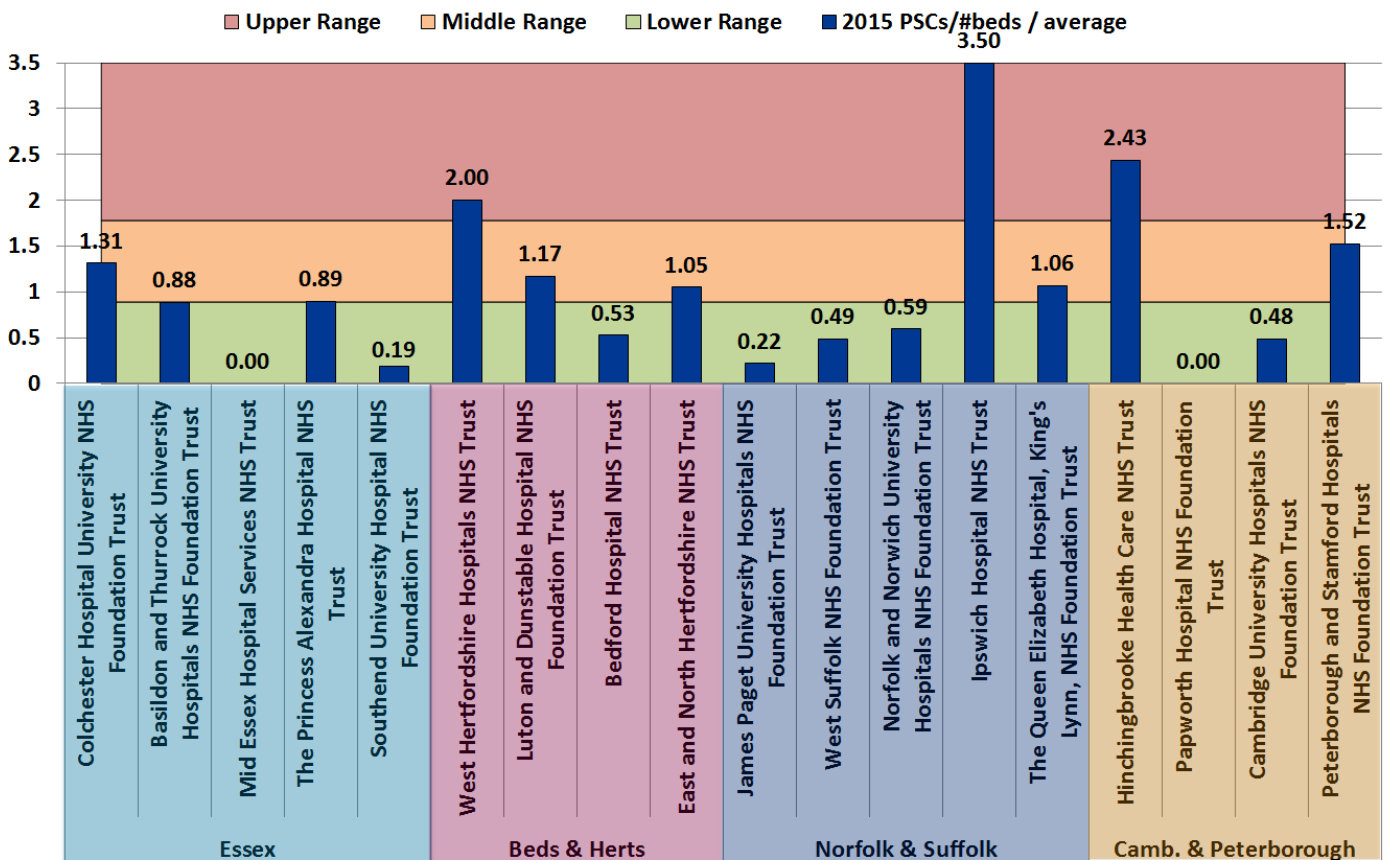
Areas of Concern identified	Understaffing	High Workload/ Work Intensity	Patient Care Provided Incl assessment, treatment	Lack of Team work	Inadequate Handover	Capacity [shortage of Beds]	Confidence Issues including lack of competence, induction; cross cover	Inadequate Supervision	Tension b/w education & service	Nursing Issues	Locum Issues incl quality, availability	Clinical Processes incl equipment; IT	Intercultural communication issues incl lang	Non PSC - Ethical Issue	Total
NORFOLK & SUFFOLK															
Ipswich Hospital NHS Trust N= F1 = 3; F2 = 1; ST4+ = 1;	5	2	3	2	2		2	2		1	1	1	1		22
James Paget University Hospitals NHS Foundation Trust N= ST4+ = 1;												1			1
Norfolk and Norwich University Hospitals NHS Foundation Trust N= F1 =1; C/ST1 = 1	2		1												3
Norfolk and Suffolk NHS Foundation Trust N= C/ST2 = 1	1	1													2
The Queen Elizabeth Hospital, King's Lynn, NHS Foundation Trust N= F1 = 2; ST4+ = 1;	1						1			1	1		1		5
West Suffolk NHS Foundation Trust N= C/ST2 = 1	1		1												2
TOTAL	10	3	5	2	2	0	3	2	0	2	2	2	2	0	35
CAMBRIDGE & PETERBOROUGH															
Cambridge University Hospitals NHS Foundation Trust N= F2 = 1; ST4+ = 2;	1	1				1		1				1			5
Cambridgeshire and Peterborough NHS Foundation Trust N= C/ST1 = 2	1	2	2				1		1						7
Hinchingbrooke Health Care NHS Trust N= F1 = 2; F2 =1	1	2	1						1	1					6
Papworth Hospital NHS Foundation Trust															0
Peterborough and Stamford Hospitals NHS Foundation Trust N= F1 = 3; C/ST1 = 1	2		2	1	1		1	1			1				9
TOTAL	5	5	5	1	1	1	2	2	2	1	1	1	0	0	27
OVERALL TOTAL N=	28	15	17	4	9	3	10	5	3	7	8	6	2	0	117

Acute Trust Patient Safety Concerns per bed

2013-2015 Trend Data



2015 Data by Workforce Partnership



Calculation: (2015 Patient Safety Concerns / # beds in trust) / average all EoE acute trusts. Ranges are calculated using the standard deviation, centred around the target, 0. The number of beds is the overnight and day only bed numbers taken from NHS England at <http://www.england.nhs.uk/statistics/statistical-work-areas/bed-availability-and-occupancy/>, Q4 data of applicable financial year.