

*Developing people  
for health and  
healthcare*

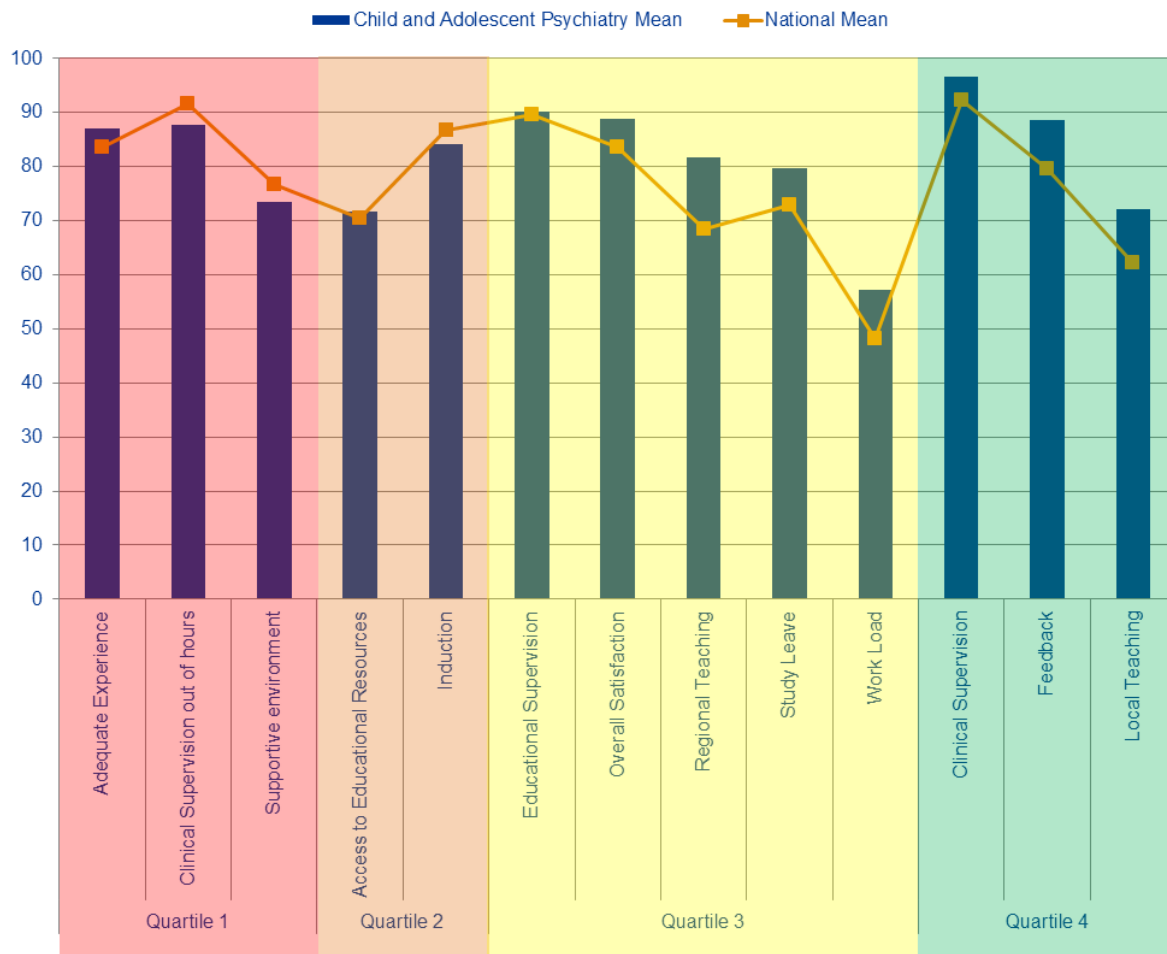
**Health Education East of England GMC National Training  
Survey Analysis 2015: Programme Group Report**

# School of Psychiatry



# Child and Adolescent Psychiatry

## Indicator Means



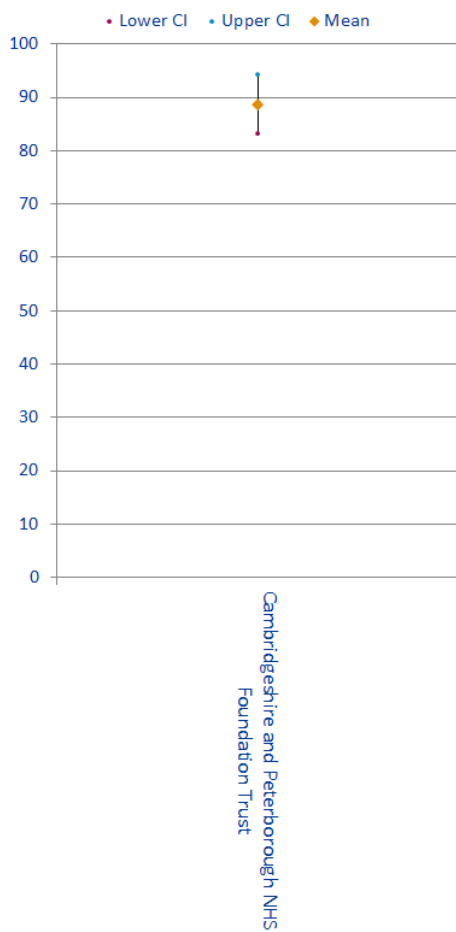
Quartiles	Indicator	Child and Adolescent Psychiatry Mean	National Mean
Quartile 1	Adequate Experience	87	83.6
	Clinical Supervision out of hours	87.69	91.62
	Supportive environment	73.50	76.57
Quartile 2	Access to Educational Resources	71.67	70.44
	Induction	84.00	86.73
Quartile 3	Educational Supervision	90.00	89.55
	Overall Satisfaction	88.80	83.49
	Regional Teaching	81.58	68.48
	Study Leave	79.67	72.78
	Work Load	57.08	48.09
Quartile 4	Clinical Supervision	96.48	92.14
	Feedback	88.43	79.53
	Local Teaching	72.10	62.18

# Child and Adolescent Psychiatry

## Outliers

Trusts	Study Leave	Regional Teaching	Local Teaching	Feedback	Access to Educational Resources	Educational Supervision	Work Load	Supportive environment	Adequate Experience	Induction	Handover	Clinical supervision out of hours	Clinical Supervision	Overall Satisfaction
Cambridgeshire and Peterborough NHS Foundation Trust														

## Overall Satisfaction Means



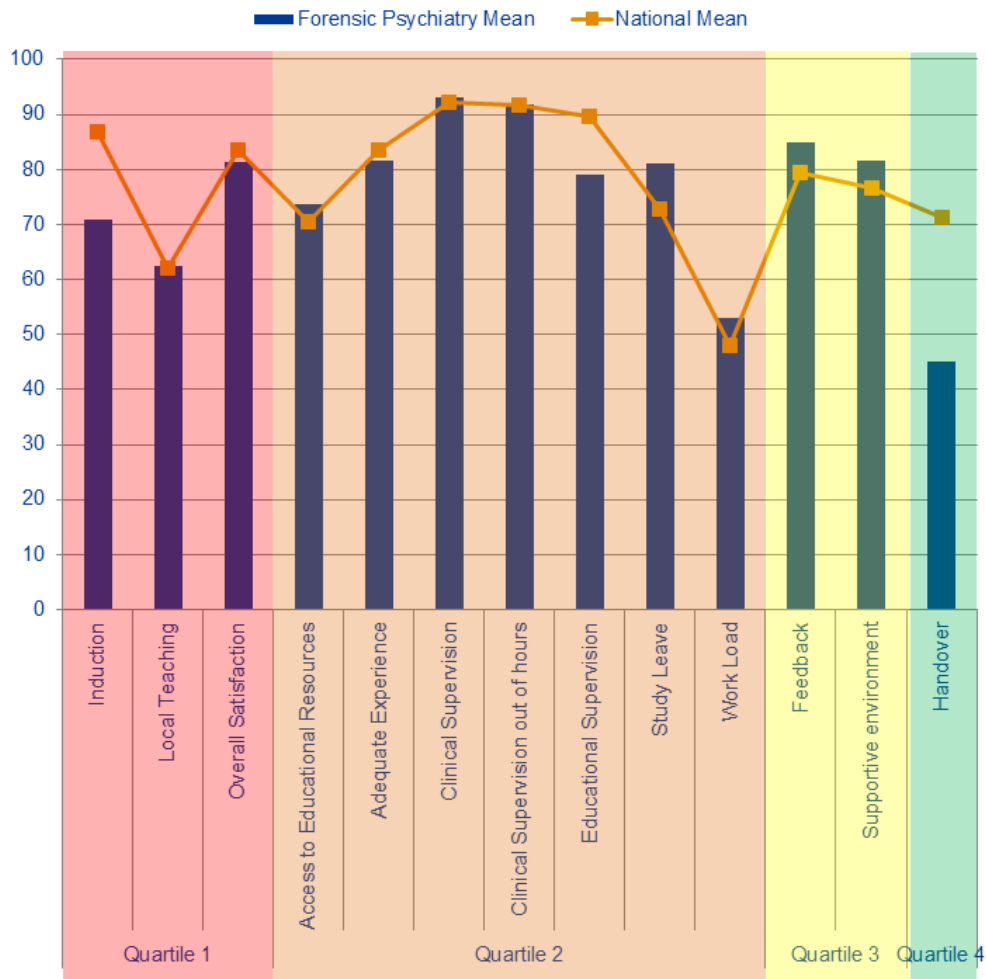
# Child and Adolescent Psychiatry

## Outlier Trends

	Patient Safety				Educational Development				Training Environment	GREEN OUTLIERS			RED OUTLIERS			2014 to 2015 CHANGE ↑ BETTER → STATUS QUO ↓ WORSE						
	Overall Satisfaction	Clinical Supervision	Clinical Supervision out of hours	Handover	Induction	Work Load	Educational Supervision	Adequate Experience	Feedback	Local Teaching	Regional Teaching	Supportive environment	Study Leave	Access to Educational Resources	2013		2014	2015	2013	2014	2015	
Cambridgeshire and Peterborough																			1	0	0	
<b>Total</b>															0	0	0	1	0	0	→→	

# Forensic Psychiatry

## Indicator Means



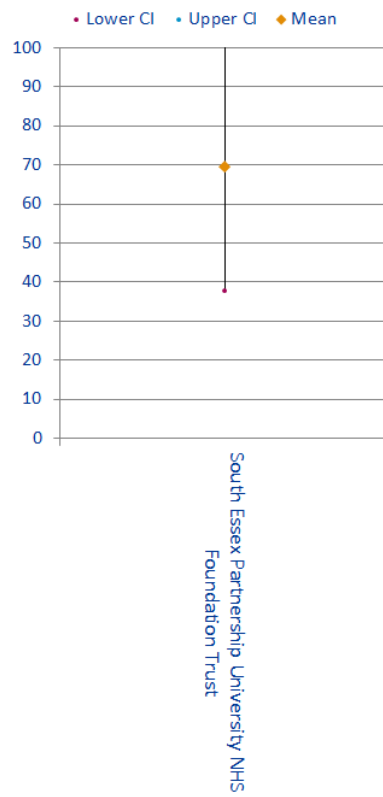
Quartiles	Indicator	Forensic Psychiatry Mean	National Mean
Quartile 1	Induction	70.83	86.73
	Local Teaching	62.33	62.18
	Overall Satisfaction	81.33	83.49
Quartile 2	Access to Educational Resources	73.81	70.44
	Adequate Experience	81.67	83.60
	Clinical Supervision	93.08	92.14
	Clinical Supervision out of hours	91.70	91.62
	Educational Supervision	79.17	89.55
	Study Leave	81.00	72.78
	Work Load	53.13	48.09
Quartile 3	Feedback	85.00	79.53
	Supportive environment	81.67	76.57
Quartile 4	Handover	45.00	71.27

# Forensic Psychiatry

## Outliers

Trusts	Overall Satisfaction	Clinical Supervision	Clinical Supervision out of hours	Handover	Induction	Adequate Experience	Supportive environment	Work Load	Educational Supervision	Access to Educational Resources	Feedback	Local Teaching	Regional Teaching	Study Leave
South Essex Partnership University NHS Foundation Trust					B	B								

## Overall Satisfaction Means

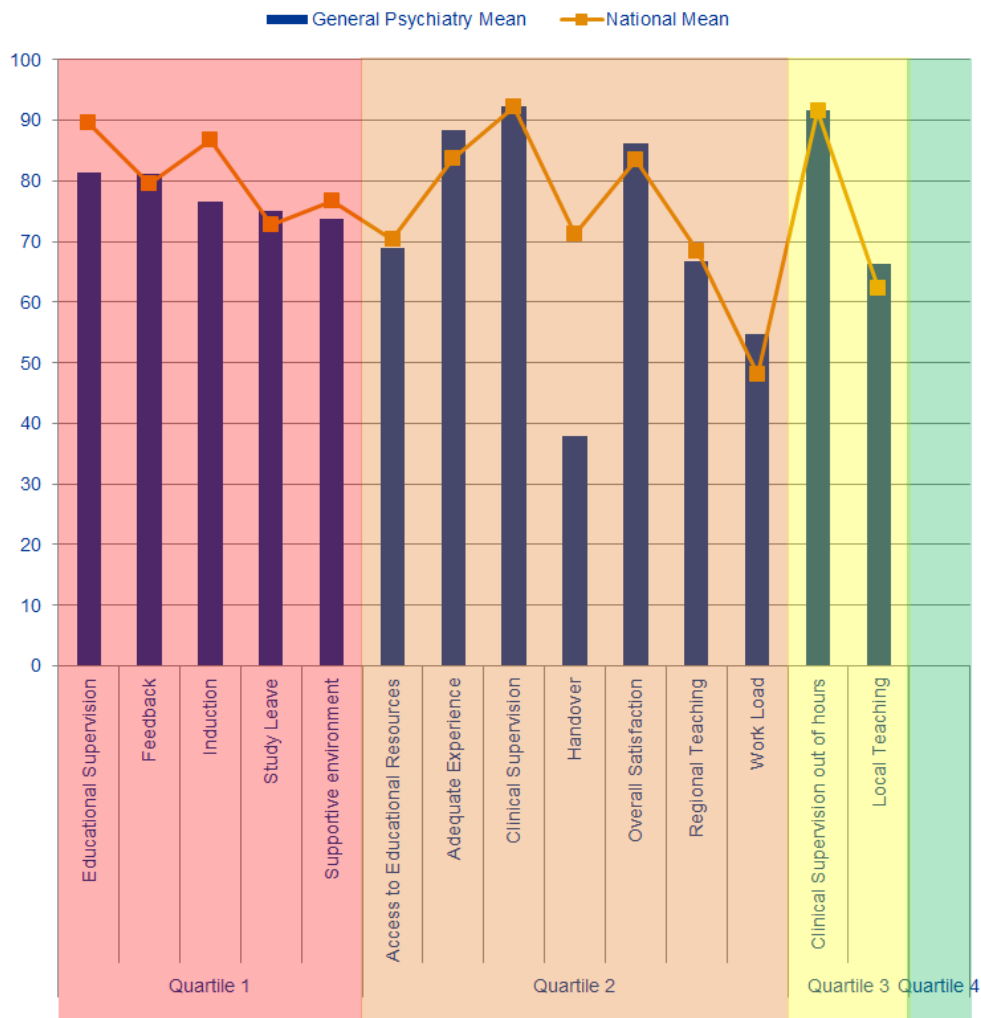


## Outlier Trends

		Patient Safety					Educational Development					Training Environment	GREEN OUTLIERS			RED OUTLIERS			2014 to 2015 CHANGE ↑ BETTER → STATUS QUO ↓ WORSE			
		Overall Satisfaction	Clinical Supervision	Clinical Supervision out of hours	Handover	Induction	Work Load	Educational Supervision	Adequate Experience	Feedback	Local Teaching	Regional Teaching	Study Leave	Supportive environment	Access to Educational Resources	2013	2014	2015		2013	2014	2015
South Essex																					2	
<b>Total</b>															0	0	0	0	0	0	2	→↓

# General Psychiatry

## Indicator Means



Quartiles	Indicator	General Psychiatry Mean	National Mean
Quartile 1	Educational Supervision	81.38	89.55
	Feedback	81.15	79.53
	Induction	76.49	86.73
	Study Leave	75.11	72.78
	Supportive environment	73.83	76.57
Quartile 2	Access to Educational Resources	68.82	70.44
	Adequate Experience	88.30	83.60
	Clinical Supervision	92.39	92.14
	Handover	37.92	71.27
	Overall Satisfaction	86.21	83.49
	Regional Teaching	66.65	68.48
Quartile 3	Work Load	54.65	48.09
	Clinical Supervision out of hours	91.53	91.62
Quartile 4	Local Teaching	66.38	62.18

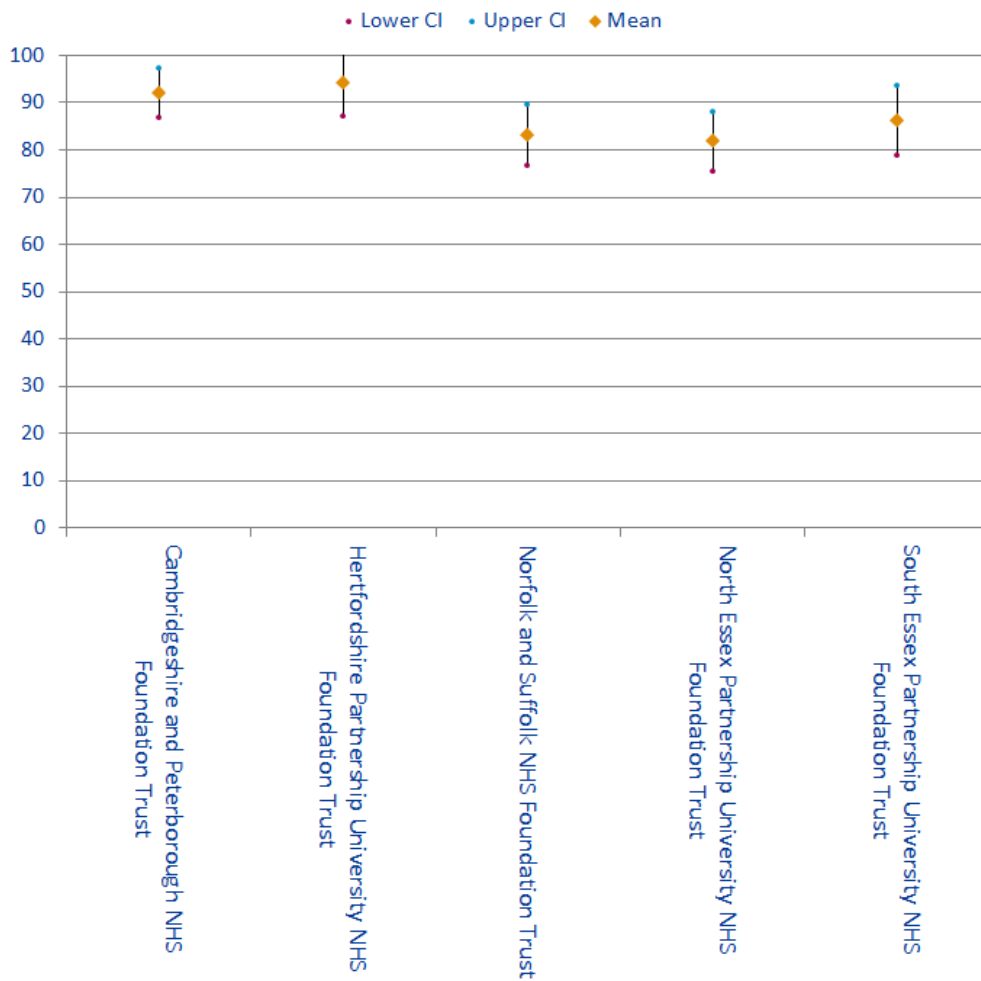


# General Psychiatry

## Outliers

Trusts	Study Leave	Regional Teaching	Local Teaching	Feedback Access to Educational Resources	Educational Supervision	Work Load	Supportive environment	Adequate Experience	Induction	Handover	Clinical Supervision out of hours	Clinical Supervision	Overall Satisfaction
Cambridgeshire and Peterborough NHS Foundation Trust													
Hertfordshire Partnership University NHS Foundation Trust													
Norfolk and Suffolk NHS Foundation Trust													B
North Essex Partnership University NHS Foundation Trust							B						B
South Essex Partnership University NHS Foundation Trust													B

## Overall Satisfaction Means



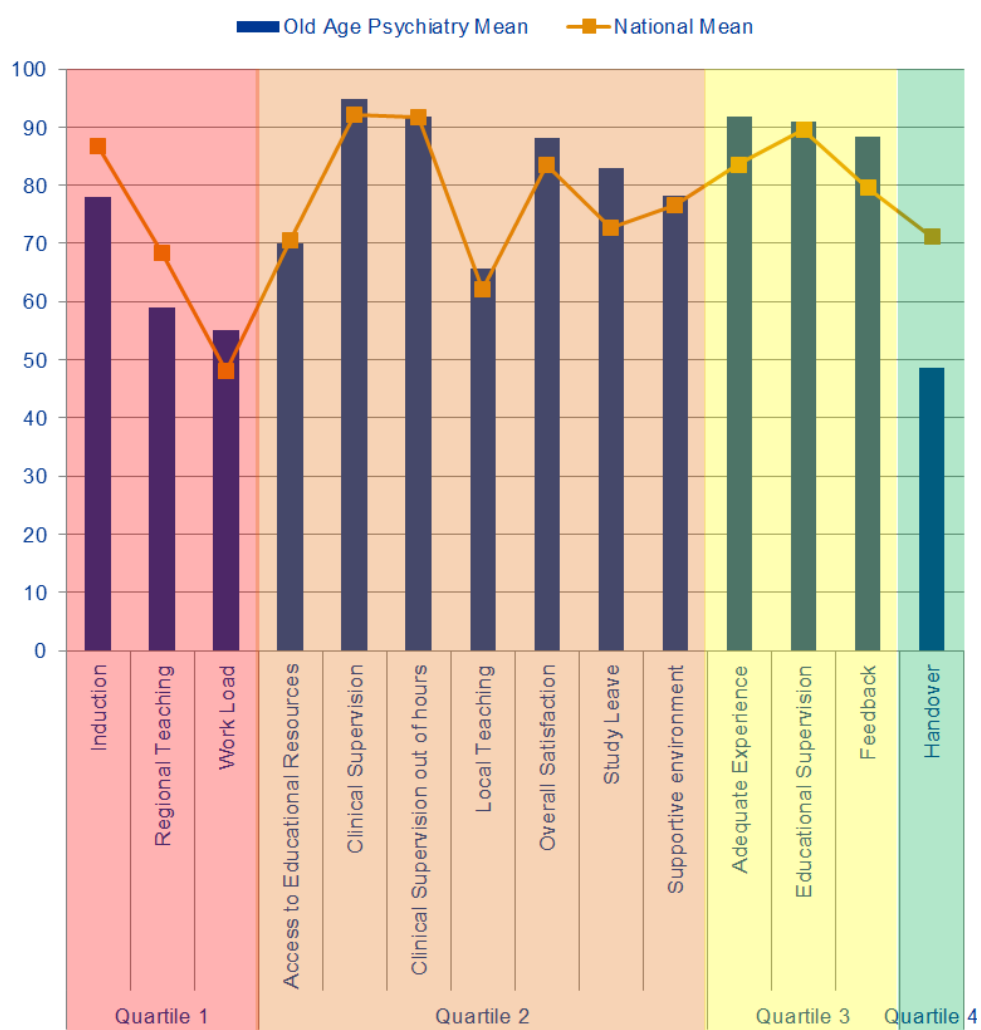
# General Psychiatry

## Outlier Trends

Trusts	Overall Satisfaction	Patient Safety			Educational Development					Training Environment	GREEN OUTLIERS			RED OUTLIERS			2014 to 2015 CHANGE ↑ BETTER → STATUS QUO ↓ WORSE			
		Clinical Supervision out of hours	Handover	Induction	Work Load	Educational Supervision	Adequate Experience	Feedback	Local Teaching	Regional Teaching	Study Leave	Supportive environment	Access to Educational Resources	2013	2014	2015		2013	2014	2015
North Essex																	1		2	
South Essex													2							
Norfolk and Suffolk										2							5	1	1	
Cambridgeshire and Peterborough																				
Herts Parts																	2			
<b>Total</b>													0	2	0	8	1	3		↓ ↓

# Old Age Psychiatry

## Indicator Means



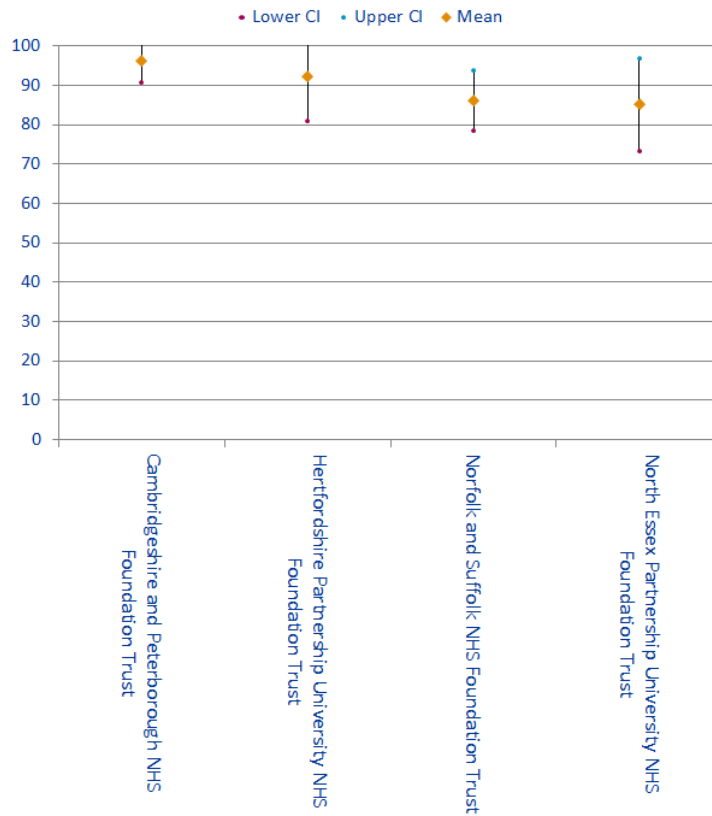
Quartiles	Indicator	Old Age Psychiatry Mean	National Mean
Quartile 1	Induction	77.95	86.73
	Regional Teaching	58.98	68.48
	Work Load	55.11	48.09
Quartile 2	Access to Educational Resources	69.90	70.44
	Clinical Supervision	94.82	92.14
	Clinical Supervision out of hours	91.76	91.62
	Local Teaching	65.64	62.18
	Overall Satisfaction	88.18	83.49
	Study Leave	82.95	72.78
	Supportive environment	78.18	76.57
Quartile 3	Adequate Experience	91.82	83.60
	Educational Supervision	90.91	89.55
	Feedback	88.45	79.53
Quartile 4	Handover	48.53	71.27

# Old Age Psychiatry

## Outliers

Trusts	Study Leave	Regional Teaching	Local Teaching	Feedback	Access to Educational Resources	Educational Supervision	Work Load	Supportive environment	Adequate Experience	Induction	Handover	Clinical Supervision out of hours	Clinical Supervision	Overall Satisfaction
Cambridgeshire and Peterborough NHS Foundation Trust				A	A									
Hertfordshire Partnership University NHS Foundation Trust			B											A
Norfolk and Suffolk NHS Foundation Trust														
North Essex Partnership University NHS Foundation Trust														

## Overall Satisfaction Means



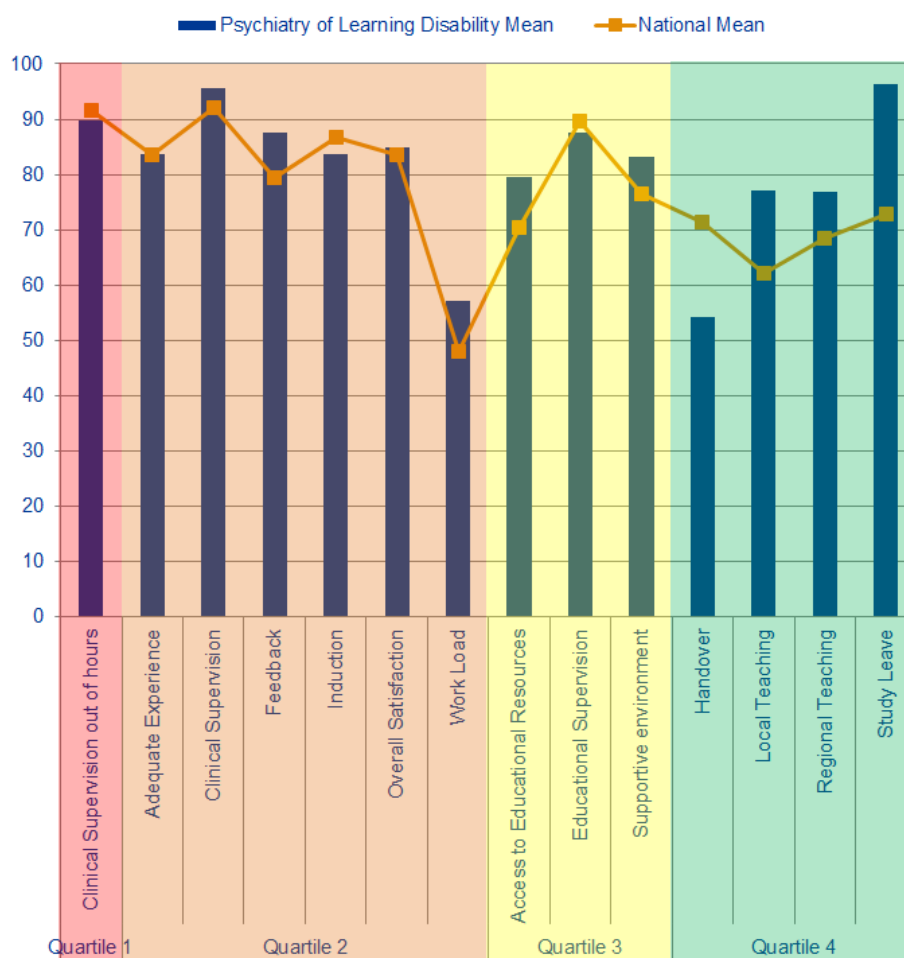
# Old Age Psychiatry

## Outlier Trends

Trusts	Overall Satisfaction	Patient Safety			Educational Development					Training Environment	GREEN OUTLIERS			RED OUTLIERS			2014 to 2015 CHANGE ↑ BETTER → STATUS QUO ↓ WORSE		
		Clinical Supervision out of hours	Handover	Induction	Work Load	Educational Supervision	Adequate Experience	Feedback	Local Teaching	Regional Teaching	Study Leave	Supportive environment	Access to Educational Resources	2013	2014	2015		2013	2014
North Essex																		1	
Norfolk and Suffolk																		1	4
Cambridgeshire and Peterborough																2			
Herts Parts										2				1	1				
<b>Total</b>													0	1	3	1	5	0	↑ ↑

# Psychiatry of Learning Disability

## Indicator Means



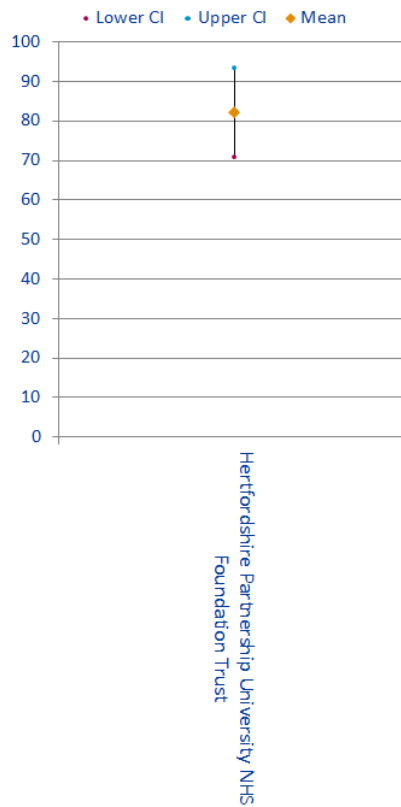
Quartiles	Indicator	Psychiatry of Learning Disability Mean	National Mean
Quartile 1	Clinical Supervision out of hours	89.66	91.62
	Adequate Experience	83.75	83.60
	Clinical Supervision	95.56	92.14
	Feedback	87.50	79.53
	Induction	83.75	86.73
	Overall Satisfaction	85.00	83.49
	Work Load	57.03	48.09
Quartile 3	Access to Educational Resources	79.47	70.44
	Educational Supervision	87.50	89.55
	Supportive environment	83.13	76.57
Quartile 4	Handover	54.17	71.27
	Local Teaching	77.00	62.18
	Regional Teaching	76.86	68.48
	Study Leave	96.25	72.78

# Psychiatry of Learning Disability

## Outliers

Trusts	Study Leave	Regional Teaching	Local Teaching	Feedback	Access to Educational Resources	Educational Supervision	Work Load	Supportive environment	Adequate Experience	Induction	Handover	Clinical Supervision out of hours	Clinical Supervision	Overall Satisfaction
Hertfordshire Partnership University NHS Foundation Trust					A									A

## Overall Satisfaction Means



# Psychiatry of Learning Disability

## Outlier Trends

		Patient Safety				Educational Development					Training Environment	GREEN OUTLIERS			RED OUTLIERS			2014 to 2015 CHANGE ↑ BETTER → STATUS QUO ↓ WORSE			
		Overall Satisfaction	Clinical Supervision	Clinical Supervision out of hours	Handover	Induction	Work Load	Educational Supervision	Adequate Experience	Feedback	Local Teaching	Regional Teaching	Study Leave	Supportive environment	Access to Educational Resources	2013	2014		2015	2013	2014
Herts Parts																	2		1		
<b>Total</b>															0	0	2	0	1	0	↑↑