

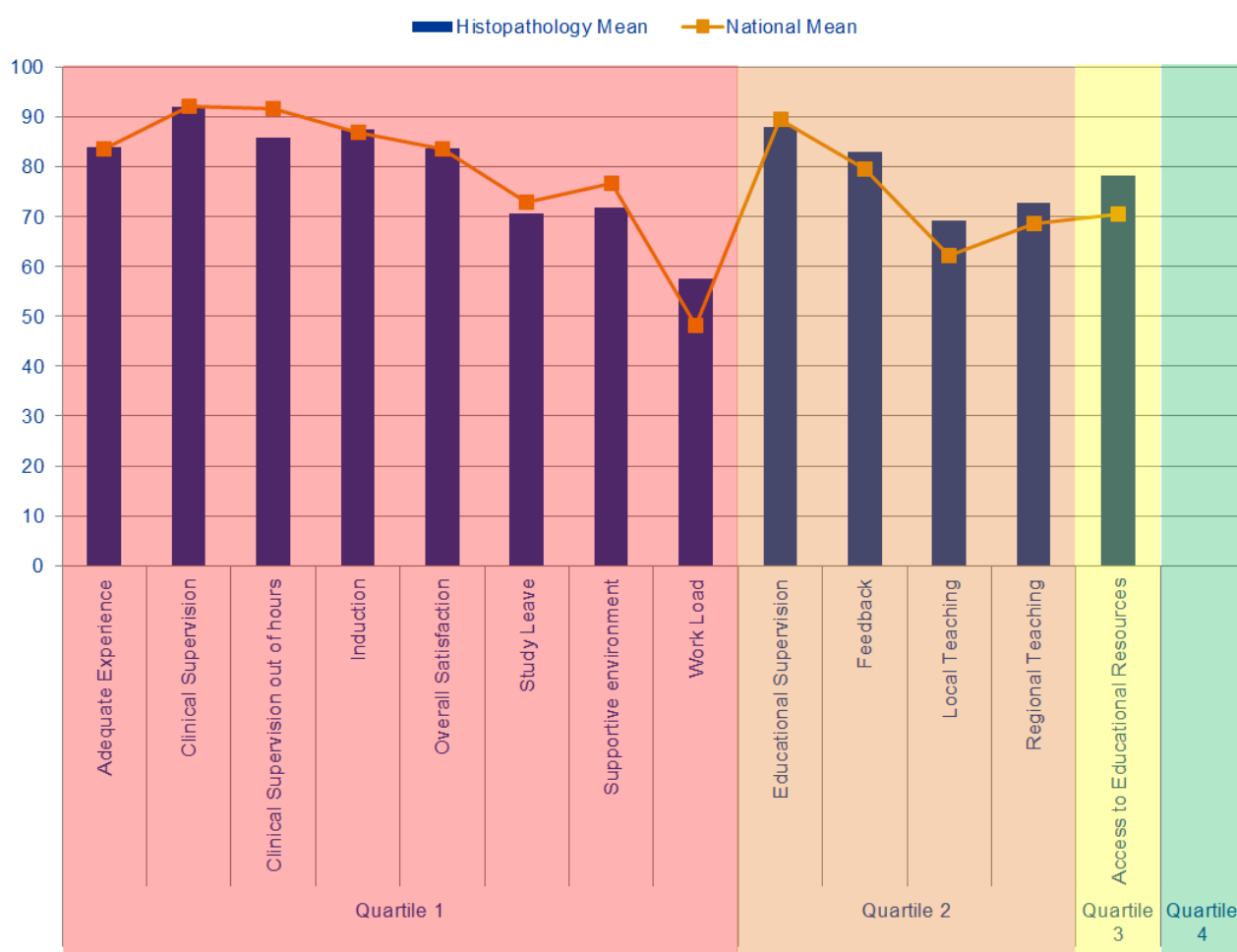
*Developing people  
for health and  
healthcare*

**Health Education East of England GMC National Training  
Survey Analysis 2015: Programme Group Report**

# School of Pathology



## Indicator Means



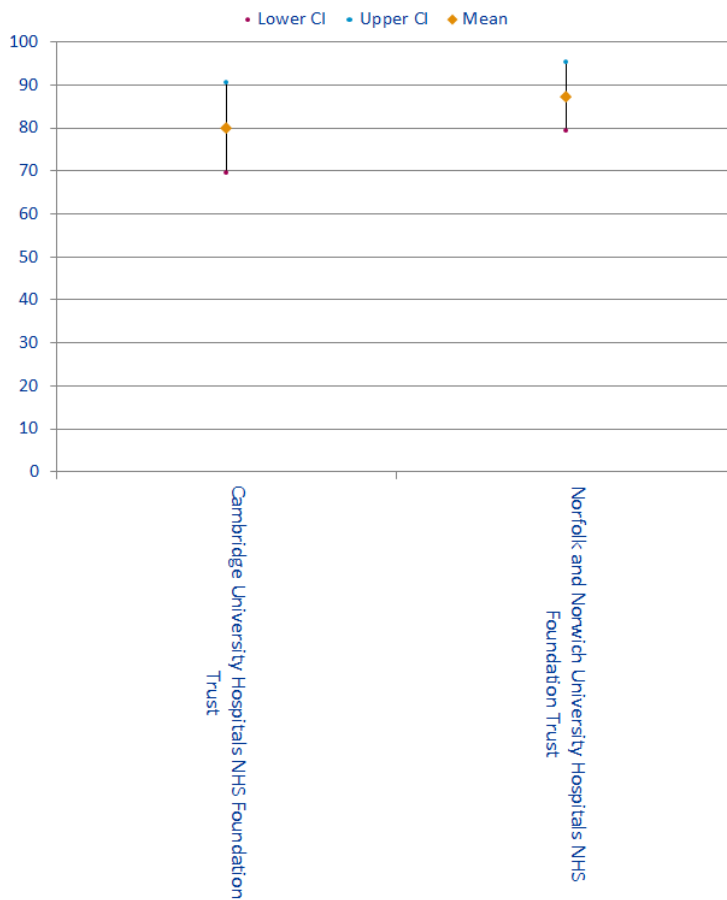
Quartiles	Indicator	Histopathology Mean	National Mean
Quartile 1	Adequate Experience	83.87	83.6
	Clinical Supervision	91.96	92.14
	Clinical Supervision out of hours	85.75	91.62
	Induction	87.41	86.73
	Overall Satisfaction	83.61	83.49
	Study Leave	70.65	72.78
	Supportive environment	71.77	76.57
	Work Load	57.53	48.09
Quartile 2	Educational Supervision	87.90	89.55
	Feedback	82.90	79.53
	Local Teaching	69.19	62.18
	Regional Teaching	72.82	68.48
Quartile 3	Access to Educational Resources	78.07	70.44
Quartile 4			

# Histopathology

## Outliers

Trusts	Study Leave	Regional Teaching	Local Teaching	Feedback	Access to Educational Resources	Educational Supervision	Work Load	Supportive environment	Adequate Experience	Induction	Handover	Clinical Supervision out of hours	Clinical Supervision	Overall Satisfaction
Cambridge University Hospitals NHS Foundation Trust														
Norfolk and Norwich University Hospitals NHS Foundation Trust										A	A			B

## Overall Satisfaction Means

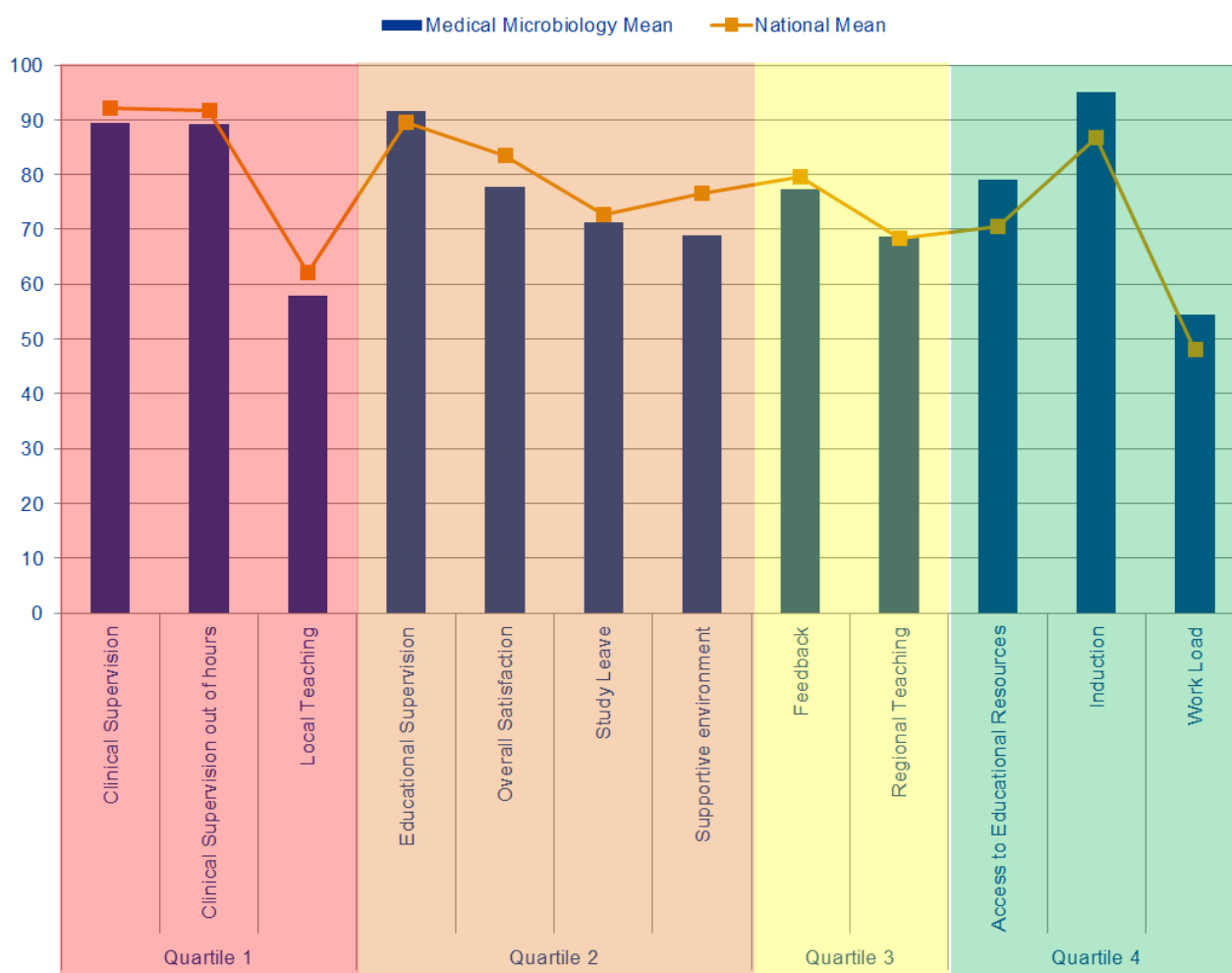


## Outlier Trends

Trusts	Overall Satisfaction	Patient Safety			Educational Development						Training Environment	GREEN OUTLIERS			RED OUTLIERS			2014 to 2015 CHANGE ↑ BETTER → STATUS QUO ↓ WORSE		
		Clinical Supervision	Clinical Supervision out of hours	Handover	Induction	Work Load	Educational Supervision	Adequate Experience	Feedback	Local Teaching	Regional Teaching	Supportive environment	Access to Educational Resources	2013	2014	2015	2013		2014	2015
Norfolk and Norwich					2									1	1	1			1	
Cambridge University																2				
<b>Total</b>													0	1	1	3	0		1	→↓

# Medical Microbiology

## Indicator Means



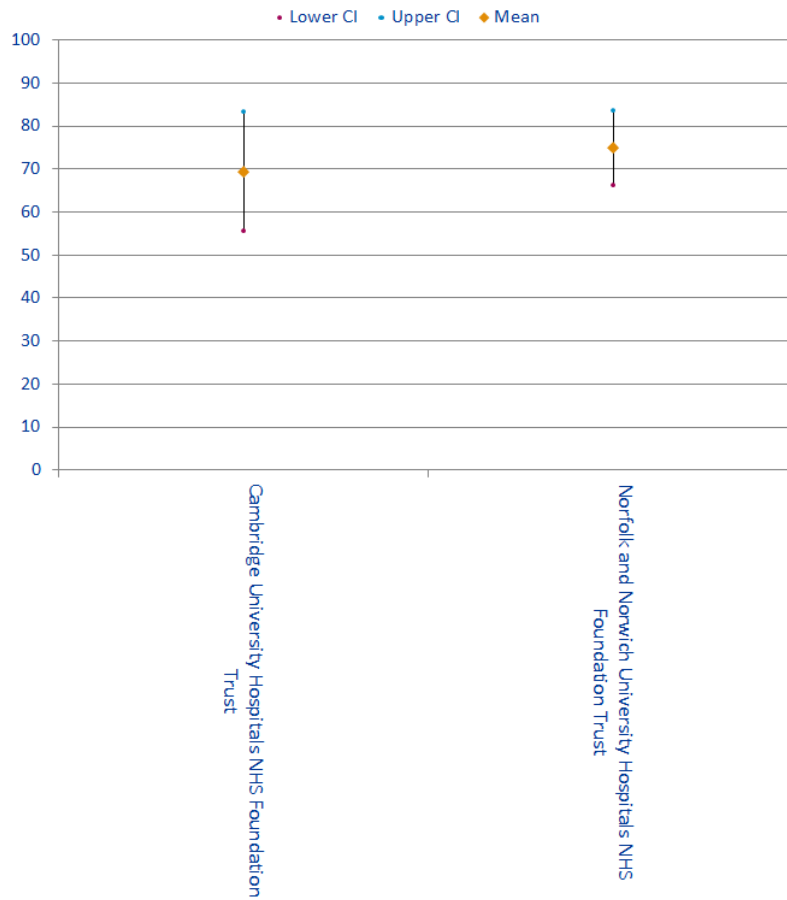
Quartiles	Indicator	Medical Microbiology Mean	National Mean
Quartile 1	Clinical Supervision	89.44	92.14
	Clinical Supervision out of hours	89.31	91.62
	Local Teaching	57.89	62.18
Quartile 2	Educational Supervision	91.67	89.55
	Overall Satisfaction	77.78	83.49
	Study Leave	71.30	72.78
	Supportive environment	68.89	76.57
Quartile 3	Feedback	77.31	79.53
	Regional Teaching	68.80	68.48
Quartile 4	Access to Educational Resources	78.96	70.44
	Induction	95.00	86.73
	Work Load	54.40	48.09

# Medical Microbiology

## Outliers

Trusts	Study Leave	Regional Teaching	Local Teaching	Feedback	Access to Educational Resources	Educational Supervision	Work Load	Supportive environment	Adequate Experience	Induction	Handover	Clinical Supervision out of hours	Clinical Supervision	Overall Satisfaction
Cambridge University Hospitals NHS Foundation Trust			B				B							B
Norfolk and Norwich University Hospitals NHS Foundation Trust			B						B					B

## Overall Satisfaction Means



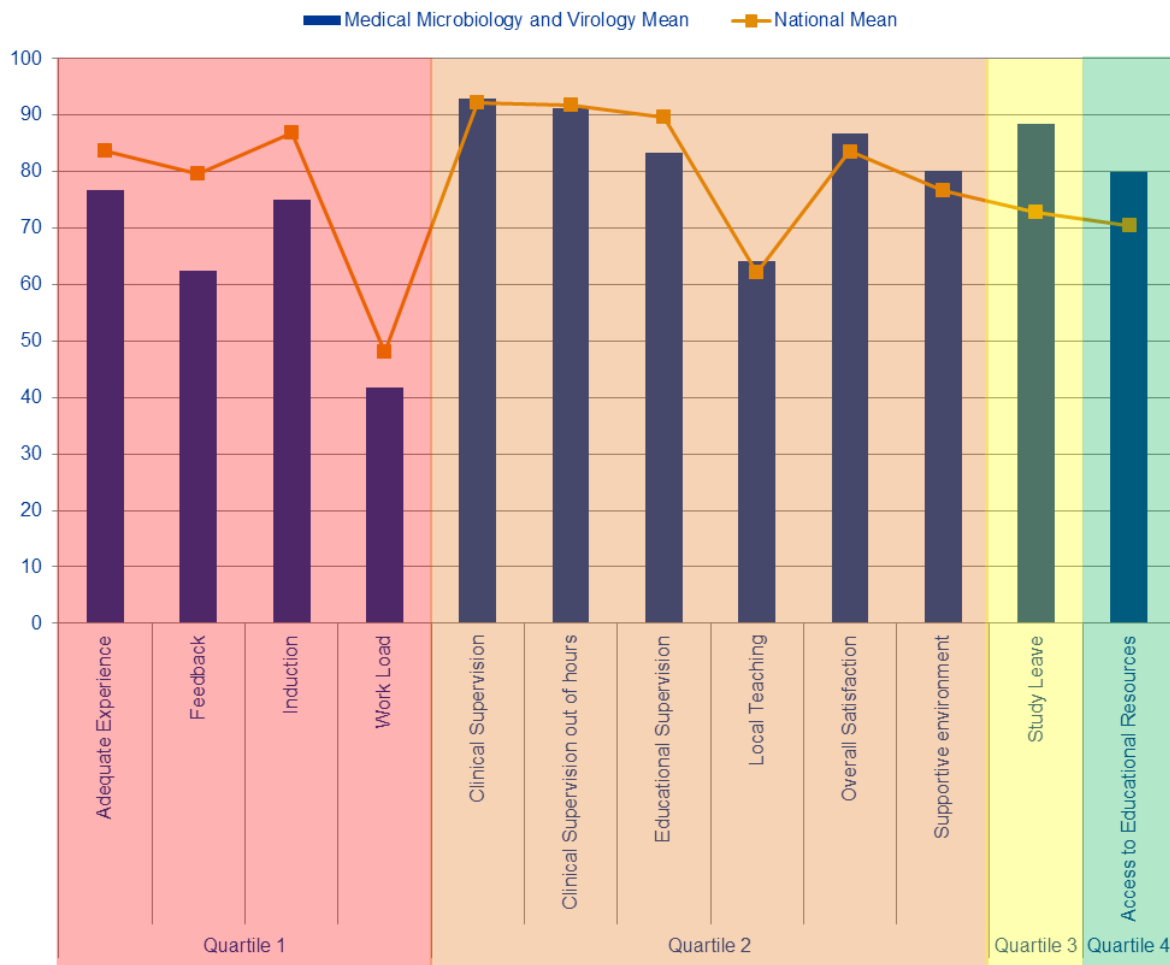
# Medical Microbiology

## Outlier Trends

Trusts	Patient Safety					Educational Development					Training Environment	GREEN OUTLIERS			RED OUTLIERS			2014 to 2015 CHANGE ↑ BETTER → STATUS QUO ↓ WORSE			
	Overall Satisfaction	Clinical Supervision	Clinical Supervision out of hours	Handover	Induction	Work Load	Educational Supervision	Adequate Experience	Feedback	Local Teaching	Regional Teaching	Study Leave	Supportive environment	Access to Educational Resources	2013	2014	2015		2013	2014	2015
Norfolk and Norwich									2										1	3	
Cambridge University						3			3							1			2	3	3
<b>Total</b>															0	1	0	2	4	6	↓ ↓

# Medical Microbiology and Virology

## Indicator Means



Quartiles	Indicator	Medical Microbiology and Virology Mean	National Mean
Quartile 1	Adequate Experience	76.67	83.6
	Feedback	62.50	79.53
	Induction	75.00	86.73
	Work Load	41.67	48.09
Quartile 2	Clinical Supervision	92.83	92.14
	Clinical Supervision out of hours	91.17	91.62
	Educational Supervision	83.33	89.55
	Local Teaching	64.00	62.18
	Overall Satisfaction	86.67	83.49
	Supportive environment	80.00	76.57
Quartile 3	Study Leave	88.33	72.78
Quartile 4	Access to Educational Resources	79.86	70.44