

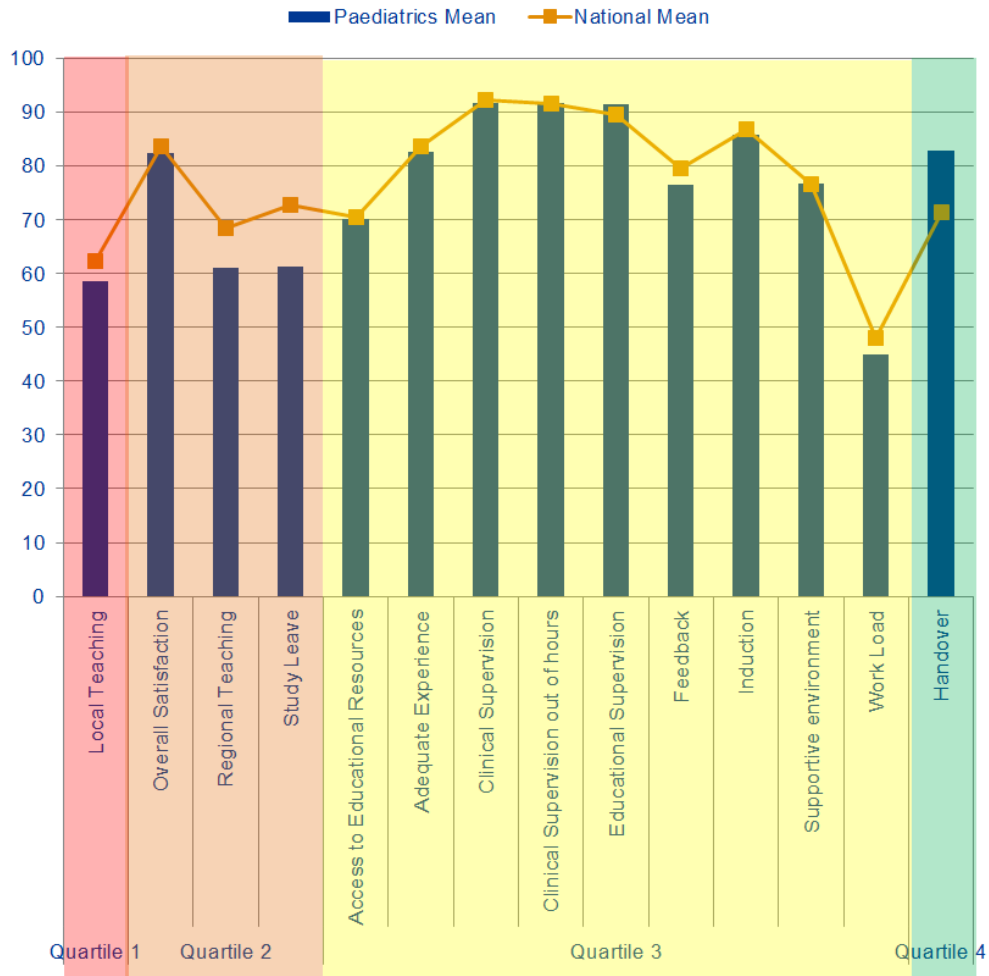
*Developing people  
for health and  
healthcare*

**Health Education East of England GMC National Training  
Survey Analysis 2015: Programme Group Report**

# School of Paediatrics



## Indicator Means



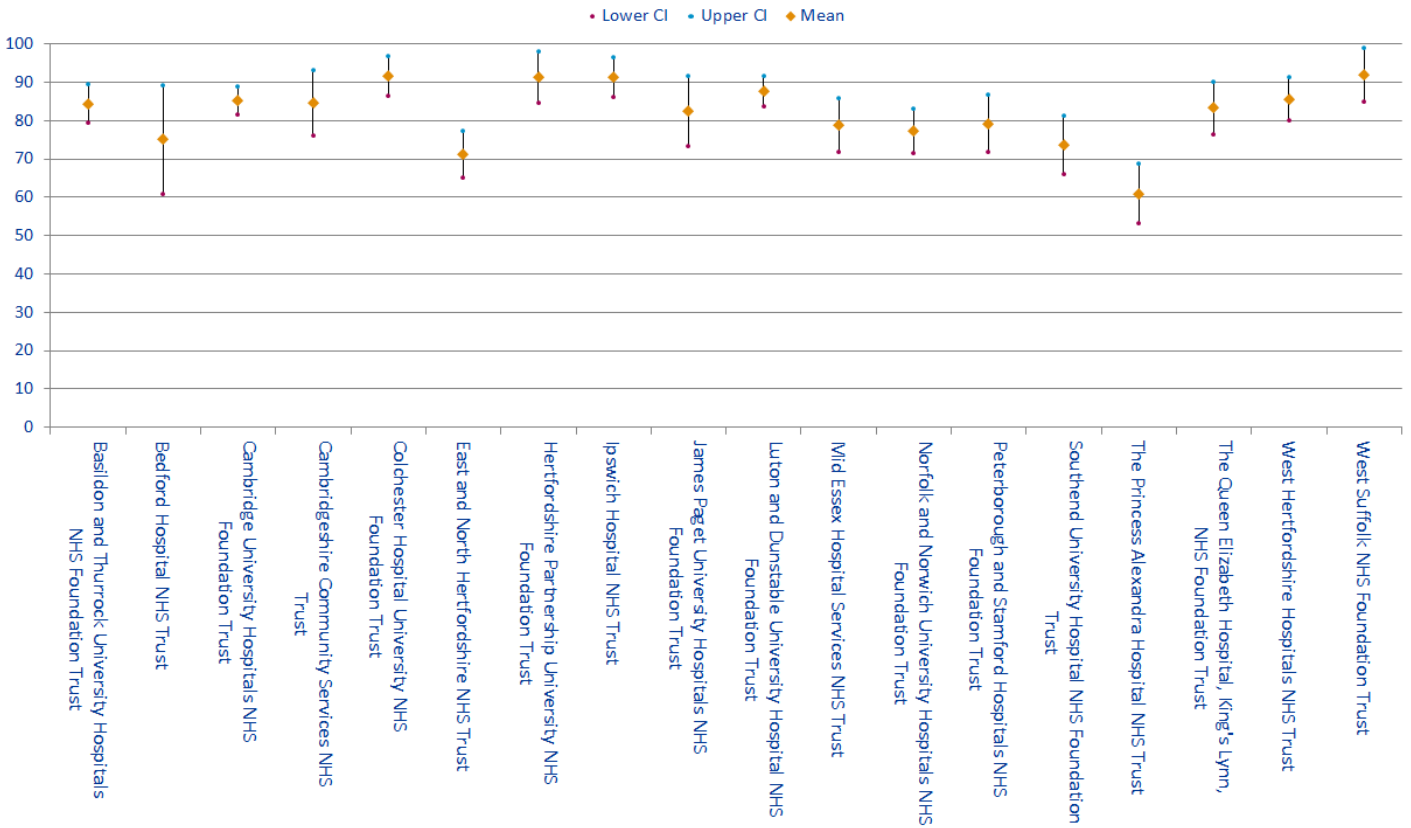
Quartiles	Indicator	Paediatrics Mean	National Mean
Quartile 1	Local Teaching	58.53	62.18
	Overall Satisfaction	82.40	83.49
Quartile 2	Regional Teaching	60.97	68.48
	Study Leave	61.30	72.78
Quartile 3	Access to Educational Resources	70.02	70.44
	Adequate Experience	82.62	83.60
	Clinical Supervision	91.56	92.14
	Clinical Supervision out of hours	91.53	91.62
	Educational Supervision	91.39	89.55
	Feedback	76.47	79.53
	Induction	85.81	86.73
	Supportive environment	76.55	76.57
	Work Load	44.95	48.09
	Handover	82.72	71.27

# Paediatrics

## Outliers

Trusts	Overall Satisfaction	Clinical Supervision out of hours	Clinical Supervision	Handover	Induction	A adequate Experience	Supportive environment	Work Load	Educational Supervision	Access to Educational Resources	Feedback	Local Teaching	Regional Teaching	Study Leave
Basildon and Thurrock University Hospitals NHS Foundation Trust														
Bedford Hospital NHS Trust														
Cambridge University Hospitals NHS Foundation Trust														
Cambridgeshire Community Services NHS Trust		A							A					
Colchester Hospital University NHS Foundation Trust		A	A	A					A					
East and North Hertfordshire NHS Trust	B	B	B		B	B	B			B				
Hertfordshire Partnership University NHS Foundation Trust						A					A			
Ipswich Hospital NHS Trust			A					A		A				
James Paget University Hospitals NHS Foundation Trust		A			A									
Luton and Dunstable University Hospital NHS Foundation Trust				A										
Mid Essex Hospital Services NHS Trust			B											B
Norfolk and Norwich University Hospitals NHS Foundation Trust														
Peterborough and Stamford Hospitals NHS Foundation Trust				A										
Southend University Hospital NHS Foundation Trust	B						B							
The Princess Alexandra Hospital NHS Trust	B	B				B	B	B		B		B		B
The Queen Elizabeth Hospital, King's Lynn, NHS Foundation Trust									A					A
West Hertfordshire Hospitals NHS Trust					A									
West Suffolk NHS Foundation Trust		A	A		A	A	A	A						

## Overall Satisfaction Means



## Outlier Trends

Trusts	Patient Safety					Educational Development					Training Environment	GREEN OUTLIERS			RED OUTLIERS			2014 to 2015 CHANGE ↑ BETTER → STATUS QUO ↓ WORSE				
	Overall Satisfaction	Clinical Supervision	Clinical Supervision out of hours	Handover	Induction	Work Load	Educational Supervision	Adequate Experience	Feedback	Local Teaching	Regional Teaching	Study Leave	Supportive environment	Access to Educational Resources	2013	2014	2015		2013	2014	2015	
Basildon and Thurrock																				3		
Colchester																4				1		
Mid Essex																					1	2
Southend	3																			1	3	2
Princess Alexandra	2	2				2	2				2									1	6	8
Ipswich													3		1	1	3				1	
James Paget															2	1	2					
Norfolk and Norwich																						
Queen Elizabeth															1		2					
Cambridge University																						
West Suffolk						2									1	1	6					
Peterborough and Stamford																	1					
Luton And Dunstable																	1			3	1	
East and North Herts	3	2												3						3	3	7
West Herts					2											1	1				1	
Bedford																				2		
Herts Parts								3							3	1	2			1		
Cambridgeshire Community																1	2			1		
<b>Total</b>															8	6	24		16	16	19	↑↓