

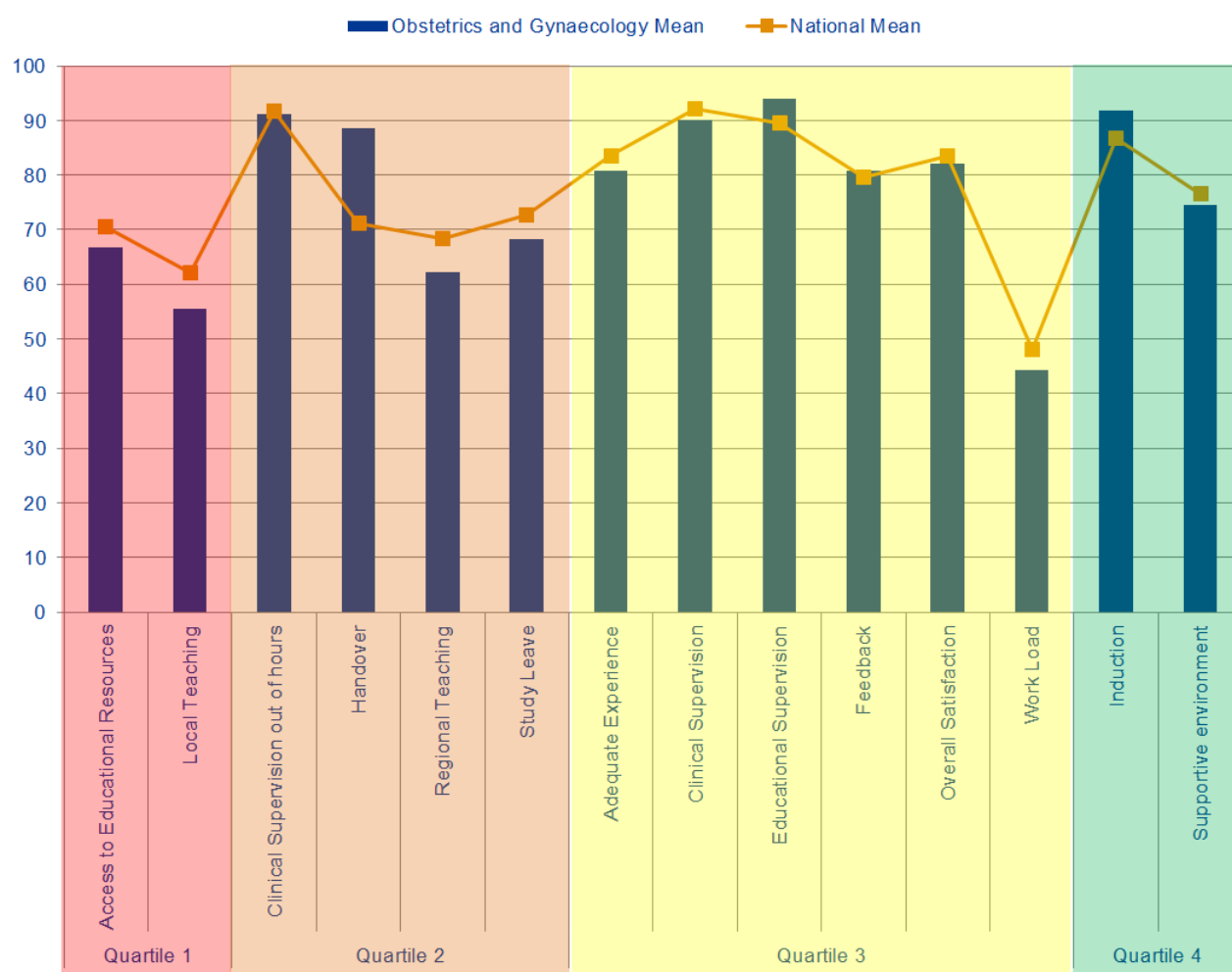
*Developing people  
for health and  
healthcare*

Health Education East of England GMC National Training  
Survey Analysis 2015: Programme Group Report

# School of Obstetrics and Gynaecology

## Indicator Means

### Obstetrics and Gynaecology



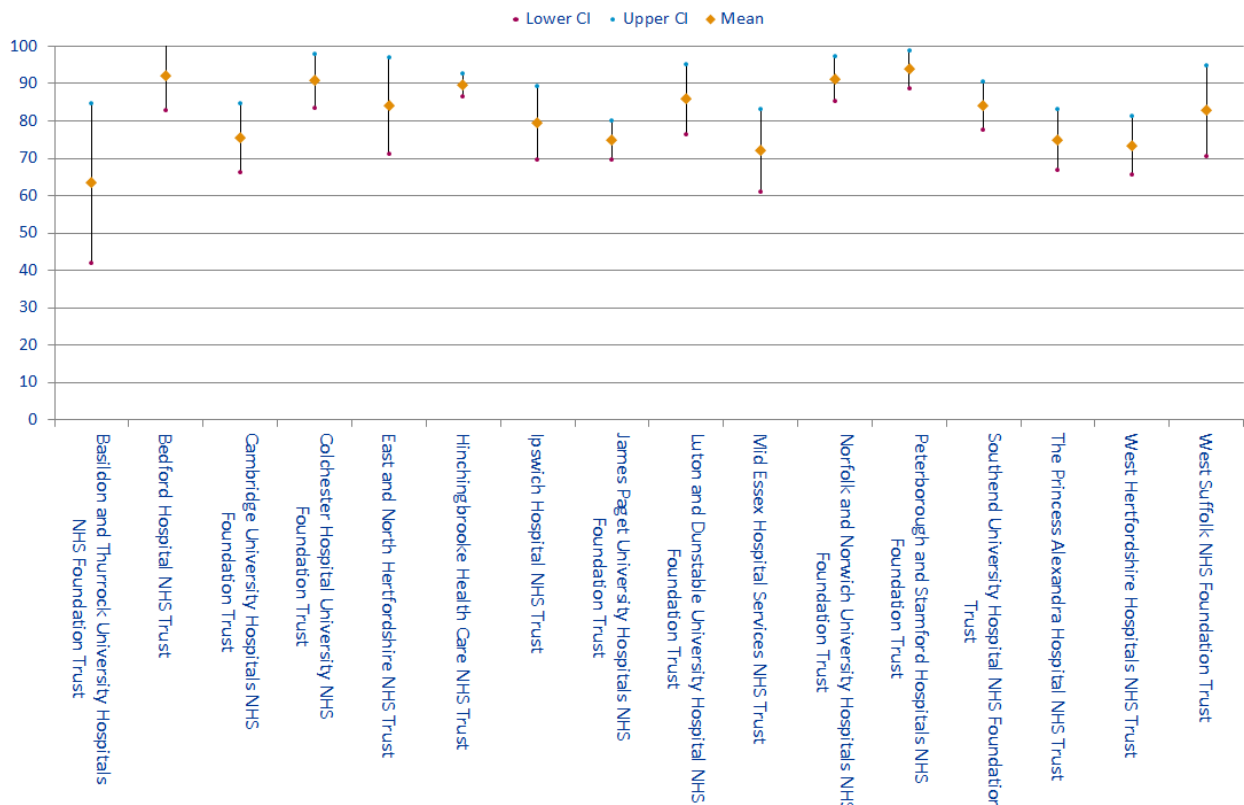
Quartiles	Indicator	Obstetrics and Gynaecology Mean	National Mean
Quartile 1	Access to Educational Resources	66.82	70.44
	Local Teaching	55.43	62.18
Quartile 2	Clinical Supervision out of hours	91.12	91.62
	Handover	88.48	71.27
	Regional Teaching	62.13	68.48
	Study Leave	68.26	72.78
Quartile 3	Adequate Experience	80.70	83.60
	Clinical Supervision	90.13	92.14
	Educational Supervision	93.91	89.55
	Feedback	80.69	79.53
	Overall Satisfaction	82.09	83.49
Quartile 4	Work Load	44.26	48.09
	Induction	91.77	86.73
	Supportive environment	74.48	76.57

# Obstetrics and Gynaecology

## Outliers

Trusts	Overall Satisfaction	Clinical Supervision out of hours	Handover	Induction	Adequate Experience	Supportive environment	Work Load	Educational Supervision	Access to Educational Resources	Feedback	Local Teaching	Regional Teaching	Study Leave
Basildon and Thurrock University Hospitals NHS Foundation Trust			B			B	B				B		
Bedford Hospital NHS Trust	A				A	A							
Cambridge University Hospitals NHS Foundation Trust						A							
Colchester Hospital University NHS Foundation Trust						A							
East and North Hertfordshire NHS Trust													
Hinchingbrooke Health Care NHS Trust					A						B		
Ipswich Hospital NHS Trust			B								B		
James Paget University Hospitals NHS Foundation Trust	B					B							
Luton and Dunstable University Hospital NHS Foundation Trust				A									B
Mid Essex Hospital Services NHS Trust									B			B	
Norfolk and Norwich University Hospitals NHS Foundation Trust						A							
Peterborough and Stamford Hospitals NHS Foundation Trust	A				A								
Southeast University Hospital NHS Foundation Trust	B							A		A			
The Princess Alexandra Hospital NHS Trust													
West Hertfordshire Hospitals NHS Trust						B			B		B		
West Suffolk NHS Foundation Trust				A								B	

## Overall Satisfaction Means



# Obstetrics and Gynaecology

## Outlier Trends

Trusts	Patient Safety			Educational Development					Training Environment	GREEN OUTLIERS			RED OUTLIERS			2014 to 2015 CHANGE ↑ BETTER → STATUS QUO ↓ WORSE						
	Overall Satisfaction	Clinical Supervision	Clinical Supervision out of hours	Handover	Induction	Work Load	Educational Supervision	Adequate Experience	Feedback	Local Teaching	Regional Teaching	Study Leave	Supportive environment	Access to Educational Resources	2013		2014	2015	2013	2014	2015	
Basildon and Thurrock																			5	2	4	
Colchester																1	1		1			
Hinchingbrooke																2	1	1			1	
Mid Essex																1					2	
Southend																	2	3	1	1		
Princess Alexandra																1						
Ipswich																			5		2	
James Paget		3														1			2	1	2	
Norfolk and Norwich																4	3	1				
West Suffolk					3											2	3	1			1	
Cambridge University																						
Peterborough and Stamford																	1	2	1			
Luton And Dunstable											2						1	6	1	1		
East and North Herts																			2	4		
West Herts																			3	4	3	
Bedford		2															3	2				
<b>Total</b>																11	12	11	28	13	17	↑↓