

*Developing people  
for health and  
healthcare*

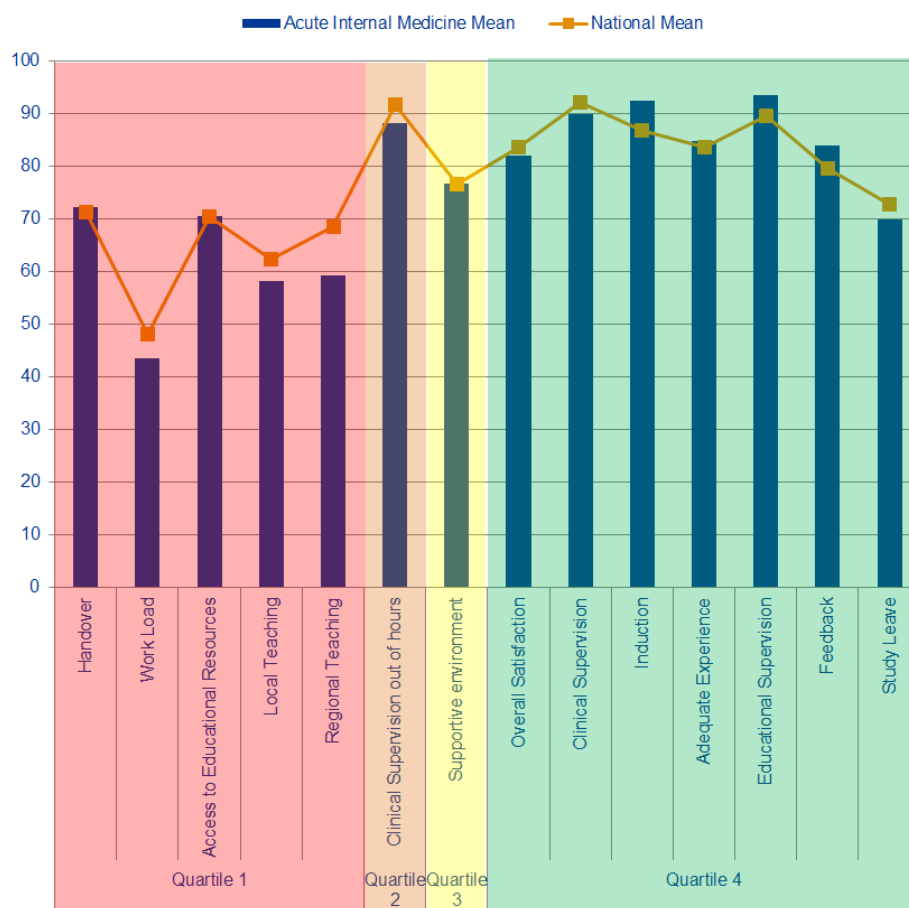
**Health Education East of England GMC National Training  
Survey Analysis 2015: Programme Group Report**

# School of Medicine



## Acute Medicine

### Indicator Means

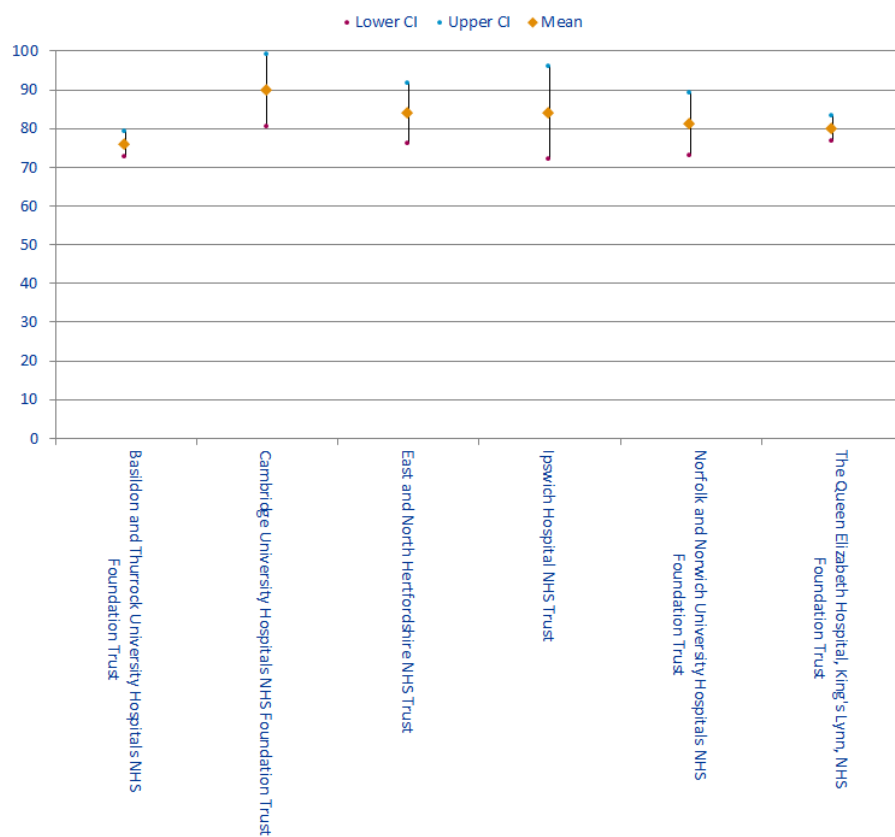


Quartiles	Indicator	Acute Internal Medicine Mean	National Mean
Quartile 1	Handover	72.08	71.27
	Work Load	43.4	48.09
	Access to Educational Resources	70.42	70.44
	Local Teaching	58.03	62.18
	Regional Teaching	59.19	68.48
Quartile 2	Clinical Supervision out of hours	88.13	91.62
Quartile 3	Supportive environment	76.67	76.57
Quartile 4	Overall Satisfaction	82	83.49
	Clinical Supervision	89.88	92.14
	Induction	92.33	86.73
	Adequate Experience	84.67	83.6
	Educational Supervision	93.33	89.55
	Feedback	83.93	79.53
	Study Leave	69.88	72.78

## Outliers

Trusts	Study Leave	Regional Teaching	Local Teaching	Feedback	Access to Educational Resources	Educational Supervision	Work Load	Supportive environment	Adequate Experience	Induction	Handover	Clinical Supervision out of hours	Clinical Supervision	Overall Satisfaction
Basildon and Thurrock University Hospitals NHS Foundation Trust														
Cambridge University Hospitals NHS Foundation Trust										A	A			
East and North Hertfordshire NHS Trust					A							B		
Ipswich Hospital NHS Trust														
Norfolk and Norwich University Hospitals NHS Foundation Trust											B			
The Queen Elizabeth Hospital, King's Lynn, NHS Foundation Trust											A			

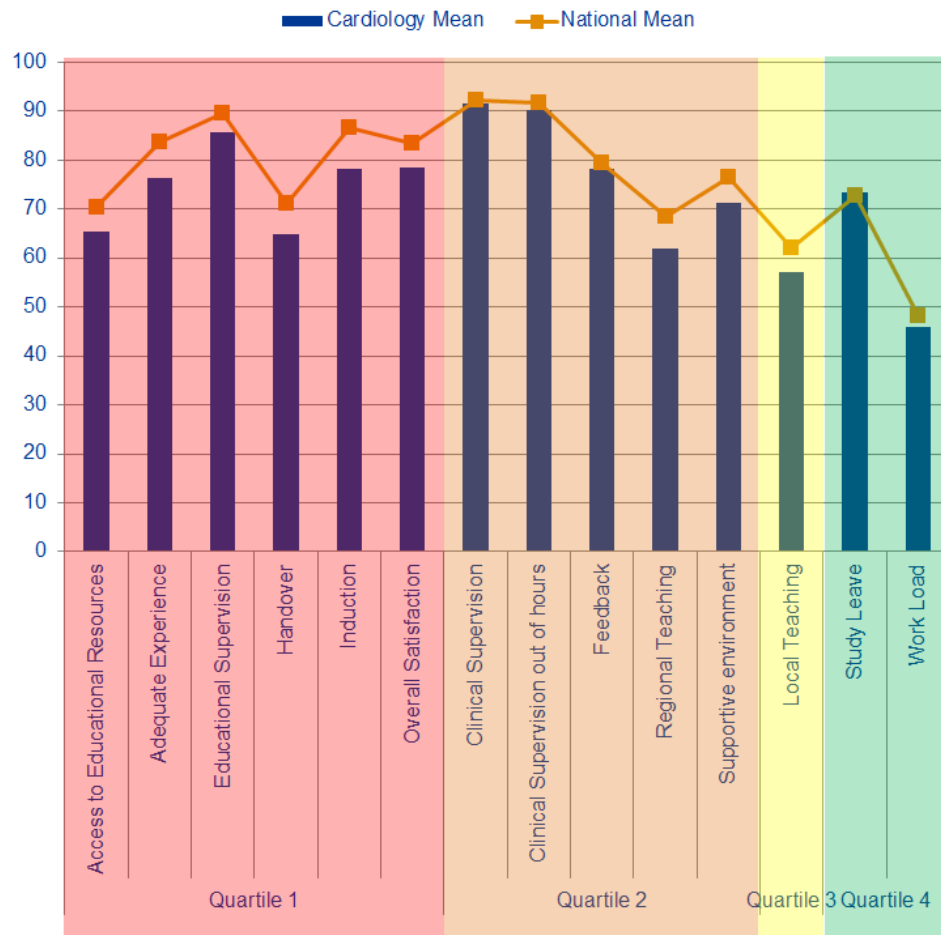
## Overall Satisfaction Means



## Outlier Trends

		Patient Safety					Educational Development						Training Environment	GREEN OUTLIERS			RED OUTLIERS			2014 to 2015 CHANGE  ↑ BETTER → STATUS QUO ↓ WORSE	
Trusts	Overall Satisfaction	Clinical Supervision	Clinical Supervision out of hours	Handover	Induction	Work Load	Educational Supervision	Adequate Experience	Feedback	Local Teaching	Regional Teaching	Study Leave	Supportive environment	Access to Educational Resources	2013	2014	2015	2013	2014	2015	
Basildon and Thurrock											2								1	3	1
Ipswich											2								2	3	1
Norfolk and Norwich				3															2	1	1
Queen Elizabeth				2												1	1		1	2	
Cambridge University																1	2		4		
East and North Herts																	1		3	1	
Total															0	2	4	5	15	6	↑↑

## Indicator Means

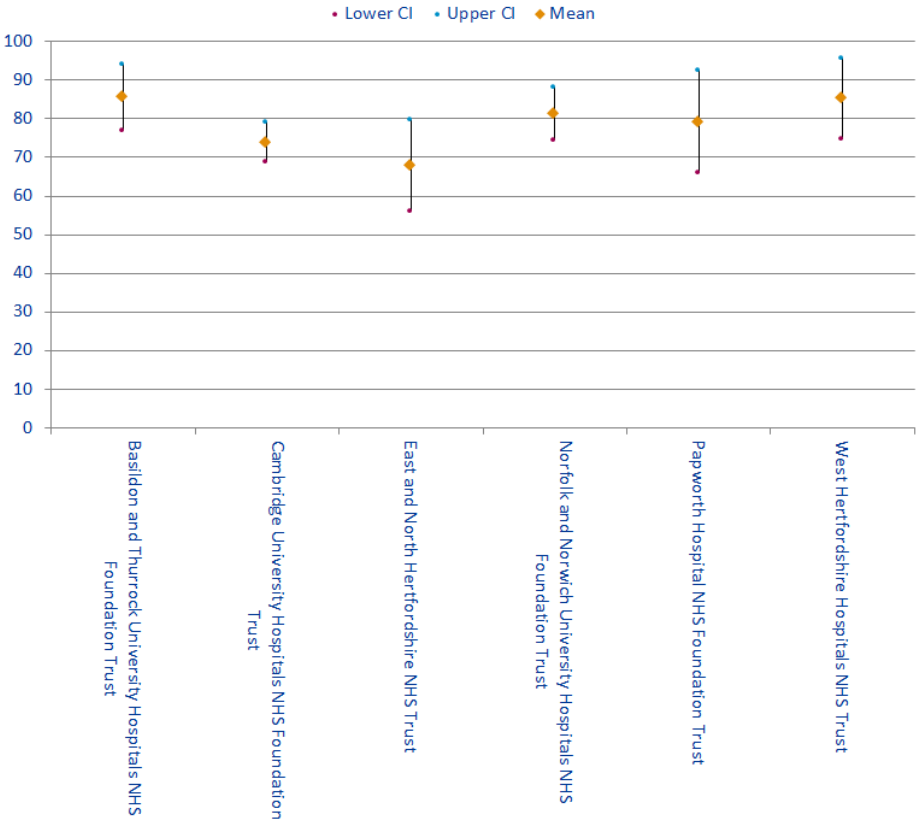


Quartiles	Indicator	Cardiology Mean	National Mean
Quartile 1	Access to Educational Resources	65.46	70.44
	Adequate Experience	76.36	83.6
	Educational Supervision	85.8	89.55
	Handover	64.83	71.27
	Induction	78.26	86.73
	Overall Satisfaction	78.55	83.49
Quartile 2	Clinical Supervision	91.55	92.14
	Clinical Supervision out of hours	90.3	91.62
	Feedback	78.36	79.53
	Regional Teaching	61.84	68.48
	Supportive environment	71.36	76.57
Quartile 3	Local Teaching	57	62.18
Quartile 4	Study Leave	73.51	72.78
	Work Load	45.98	48.09

Outliers

Trusts	Study Leave	Regional Teaching	Local Teaching	Feedback	Access to Educational Resources	Educational Supervision	Work Load	Supportive environment	Adequate Experience	Induction	Handover	Clinical Supervision out of hours	Clinical Supervision	Overall Satisfaction
Basildon and Thurrock University Hospitals NHS Foundation Trust				A										
Cambridge University Hospitals NHS Foundation Trust													B	
East and North Hertfordshire NHS Trust					B		B	B					B	
Norfolk and Norwich University Hospitals NHS Foundation Trust							B							
Papworth Hospital NHS Foundation Trust							A				B			
West Hertfordshire Hospitals NHS Trust										A	A			A

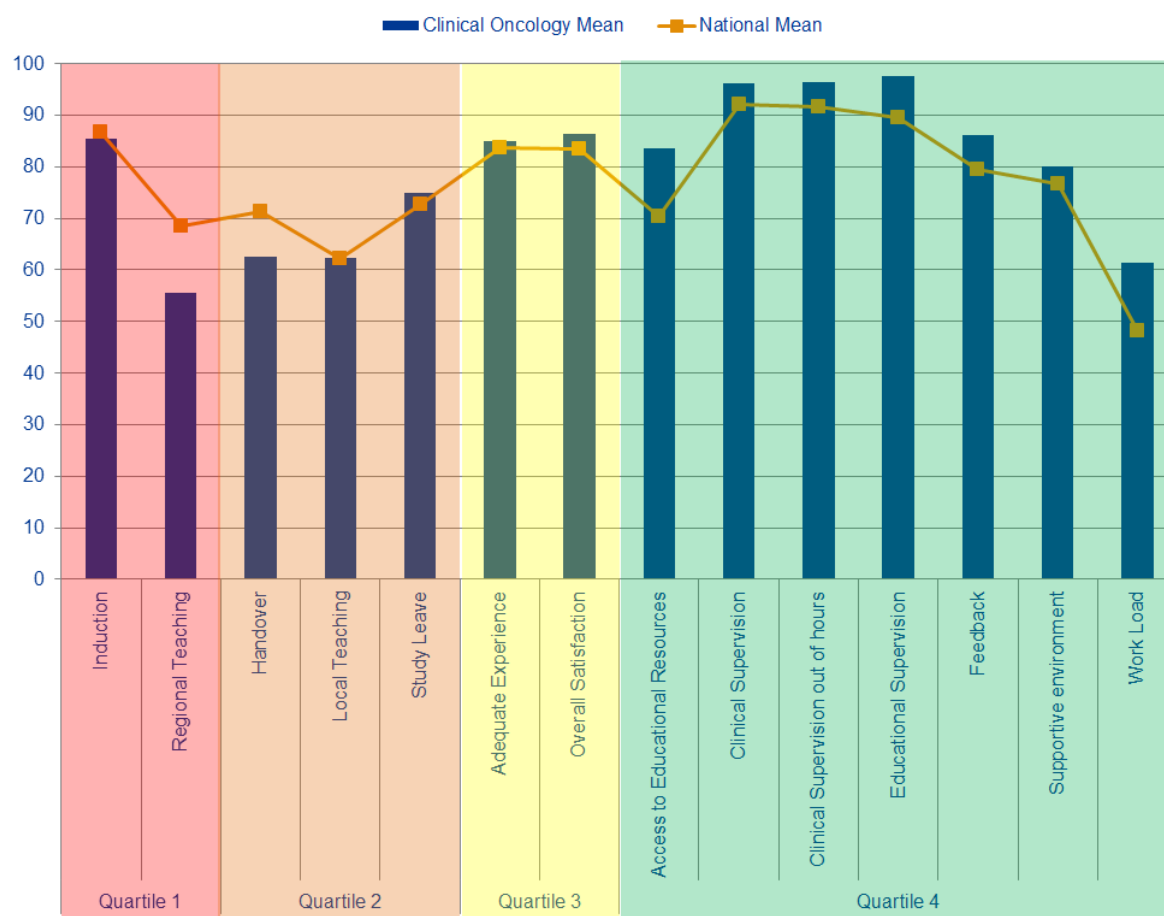
Overall Satisfaction Means



## Outlier Trends

		Patient Safety					Educational Development					Training Environment	GREEN OUTLIERS			RED OUTLIERS			2014 to 2015 CHANGE ↑ BETTER → STATUS QUO ↓ WORSE	
Trusts	Overall Satisfaction	Clinical Supervision	Clinical Supervision out of hours	Handover	Induction	Work Load	Educational Supervision	Adequate Experience	Feedback	Local Teaching	Regional Teaching	Supportive environment	Study Leave	Access to Educational Resources	2013	2014	2015	2013		2014
Basildon and Thurrock																	1			
Norfolk and Norwich																		8	2	1
Cambridge University	2														1	1		3	1	1
Papworth				2											2		1		1	2
East and North Herts																				6
West Herts															1	1	3	3		
Total															4	2	5	14	4	10

## Indicator Means



Quartiles	Indicator	Clinical Oncology Mean	National Mean
Quartile 1	Induction	85.33	86.73
	Regional Teaching	55.44	68.48
Quartile 2	Handover	62.50	71.27
	Local Teaching	62.30	62.18
	Study Leave	75.00	72.78
Quartile 3	Adequate Experience	85.00	83.60
	Overall Satisfaction	86.40	83.49
Quartile 4	Access to Educational Resources	83.50	70.44
	Clinical Supervision	96.10	92.14
	Clinical Supervision out of hours	96.43	91.62
	Educational Supervision	97.50	89.55
	Feedback	86.11	79.53
	Supportive environment	80.00	76.57
	Work Load	61.46	48.09

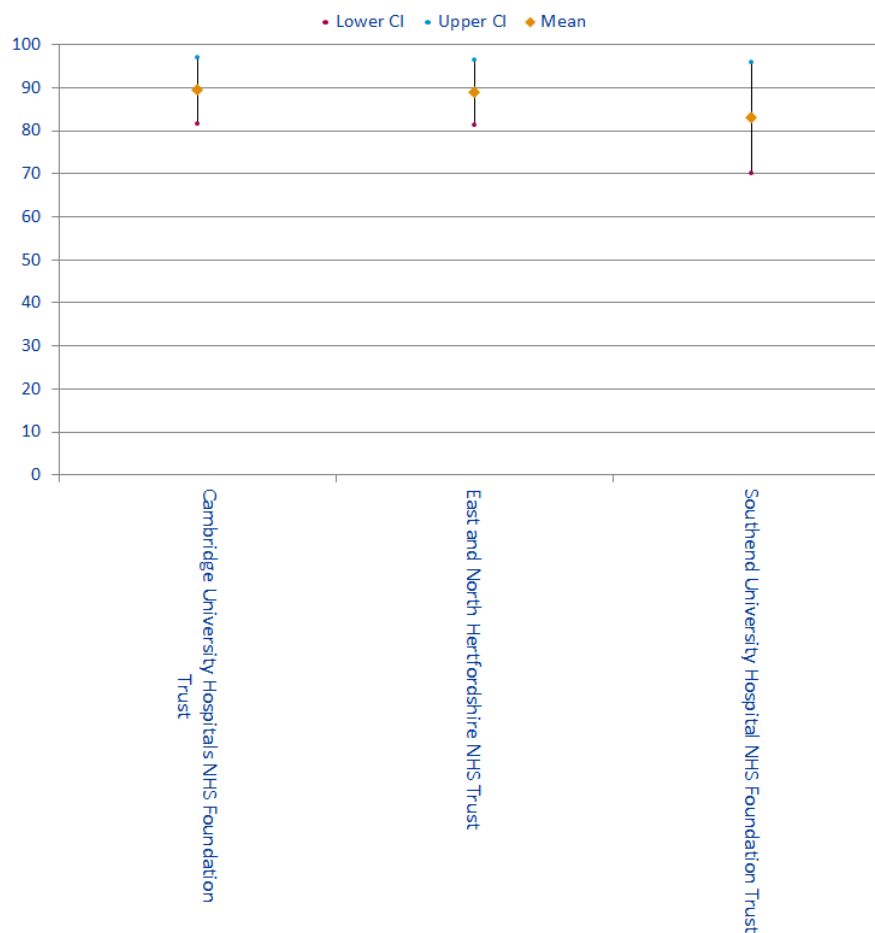


## Clinical Oncology

### Outliers

Trusts	Study Leave	Regional Teaching	Local Teaching	Feedback	Access to Educational Resources	Educational Supervision	Work Load	Supportive environment	Adequate Experience	Induction	Handover	Clinical Supervision out of hours	Clinical Supervision	Overall Satisfaction
Cambridge University Hospitals NHS Foundation Trust			B											
East and North Hertfordshire NHS Trust			B	B										
Southend University Hospital NHS Foundation Trust												A		A

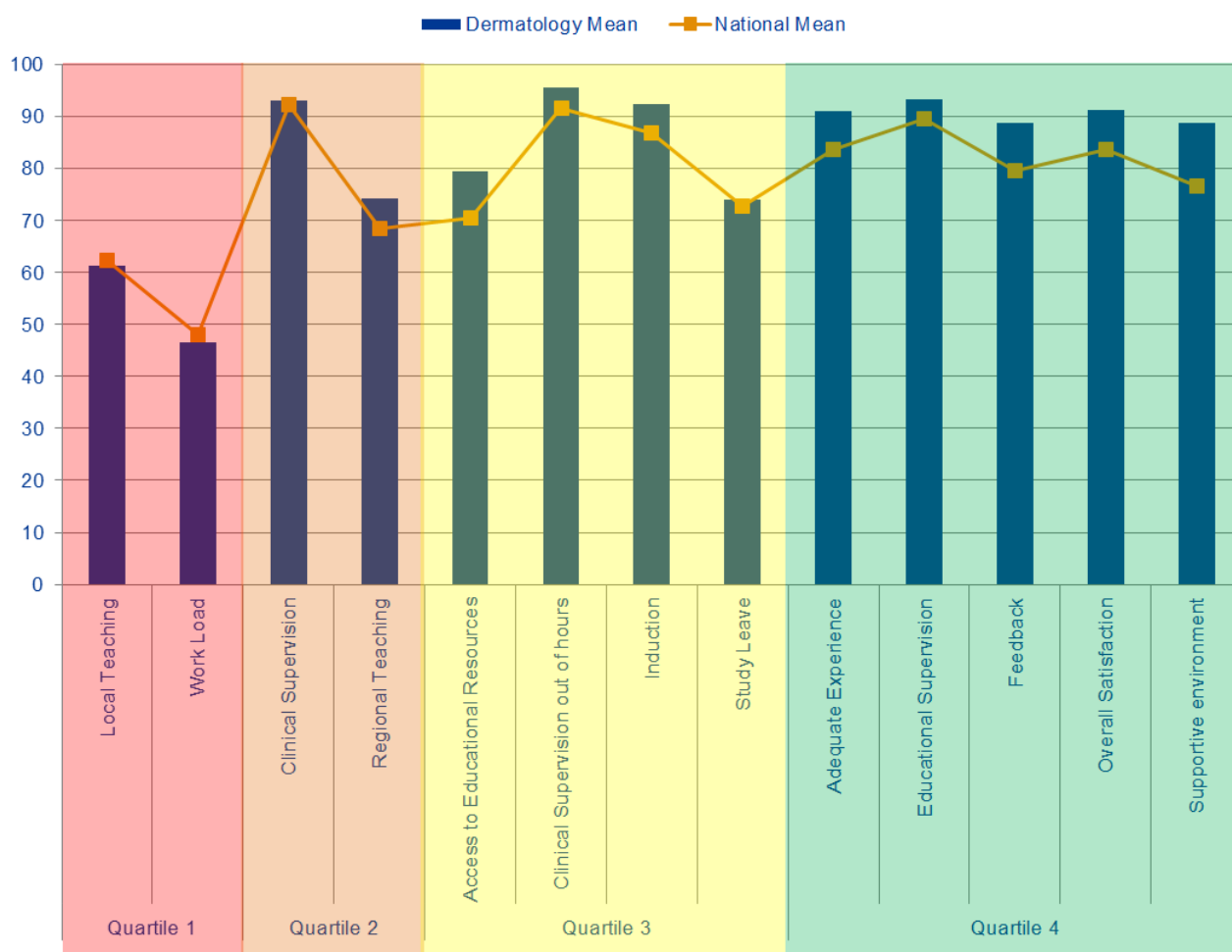
### Overall Satisfaction Means



## Outlier Trends

		Patient Safety			Educational Development					Training Environment	GREEN OUTLIERS	RED OUTLIERS		2014 to 2015 CHANGE ↑ BETTER → STATUS QUO ↓ WORSE							
Trusts	Overall Satisfaction	Clinical Supervision	Clinical Supervision out of hours	Handover	Induction	Work Load	Educational Supervision	Adequate Experience	Feedback	Local Teaching	Regional Teaching	Study Leave	Supportive environment		Access to Educational Resources	2013	2014	2015			
Southend																					
Cambridge University										2											
East and North Herts										3											
Total															0	0	3	10	2	3	↑↓

## Indicator Means

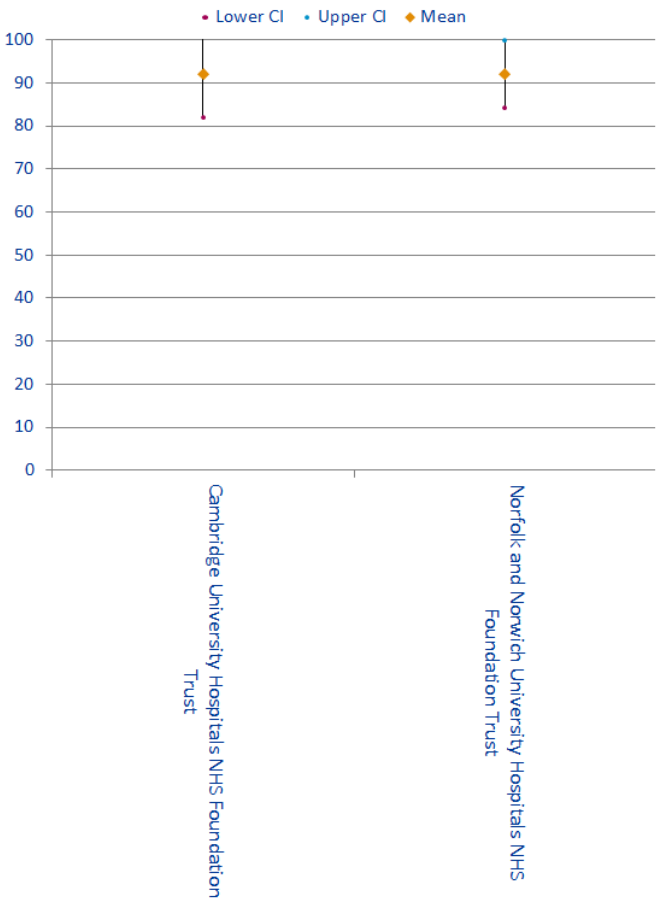


Quartiles	Indicator	Dermatology Mean	National Mean
Quartile 1	Local Teaching	61.36	62.18
	Work Load	46.59	48.09
Quartile 2	Clinical Supervision	92.89	92.14
	Regional Teaching	74.19	68.48
Quartile 3	Access to Educational Resources	79.44	70.44
	Clinical Supervision out of hours	95.38	91.62
	Induction	92.27	86.73
	Study Leave	73.94	72.78
Quartile 4	Adequate Experience	90.91	83.60
	Educational Supervision	93.18	89.55
	Feedback	88.75	79.53
	Overall Satisfaction	91.27	83.49
	Supportive environment	88.64	76.57

Outliers

Trusts	Study Leave									
	Regional Teaching									
	Local Teaching									
	Feedback									
	Access to Educational Resources									
	Educational Supervision									
	Work Load									
	Supportive environment									
	Adequate Experience									
	Induction									
	Handover									
	Clinical Supervision out of hours									
	Clinical Supervision									
	Overall Satisfaction									
Cambridge University Hospitals NHS Foundation Trust										
Norfolk and Norwich University Hospitals NHS Foundation Trust										

Overall Satisfaction Means

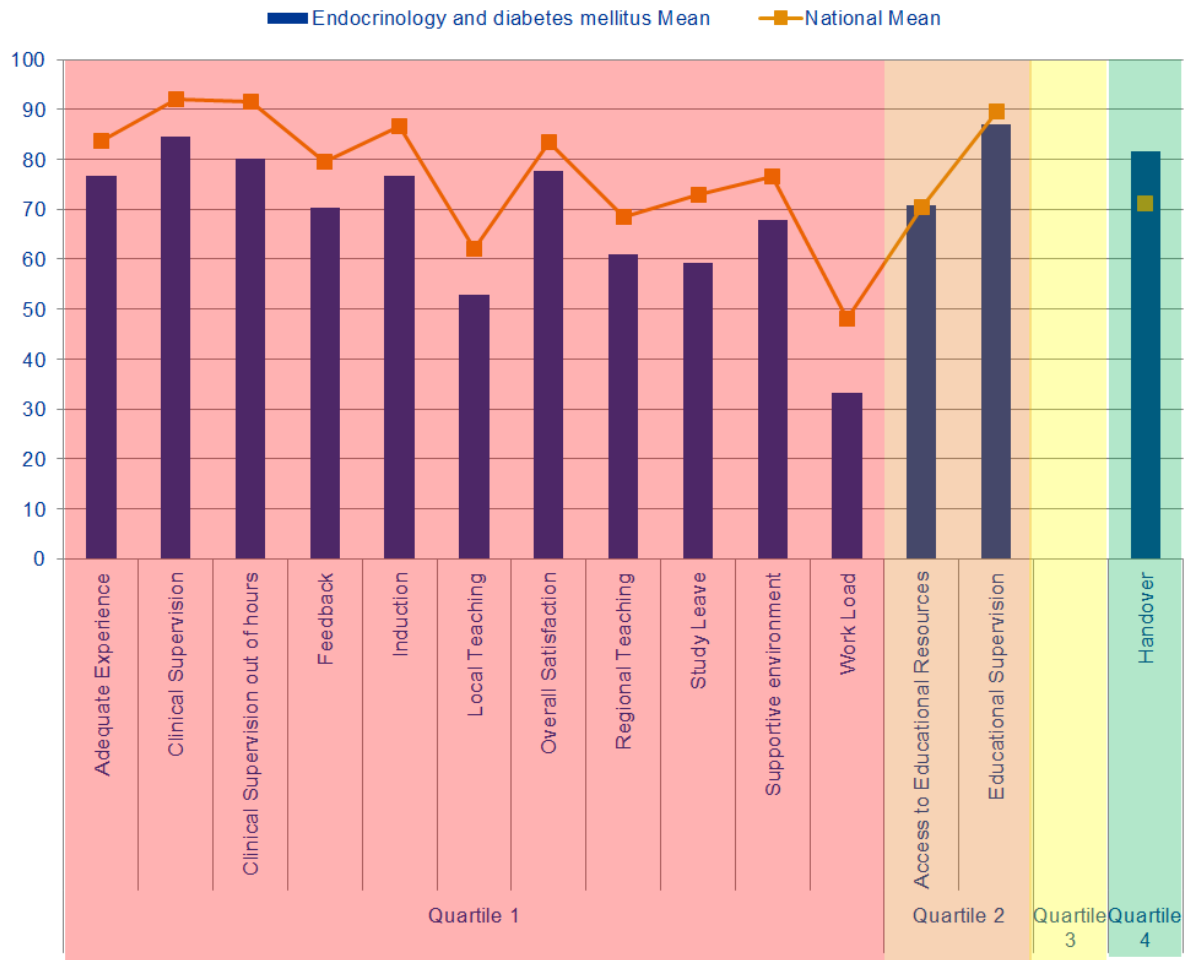


## Outlier Trends

		Patient Safety				Educational Development					Training Environment	GREEN OUTLIERS	RED OUTLIERS			2014 to 2015 CHANGE ↑ BETTER → STATUS QUO ↓ WORSE				
Trusts	Overall Satisfaction	Clinical Supervision	Clinical Supervision out of hours	Handover	Induction	Work Load	Educational Supervision	Adequate Experience	Feedback	Local Teaching	Regional Teaching	Supportive environment	Study Leave	Access to Educational Resources	2013		2014	2015	2013	2014
Norfolk and Norwich						2				2	2			2	5	1	6			
Cambridge University						2									1				1	1
Total															6	1	6	0	1	1
															↑	→	↓			

## Endocrinology and Diabetes Mellitus

### Indicator Means



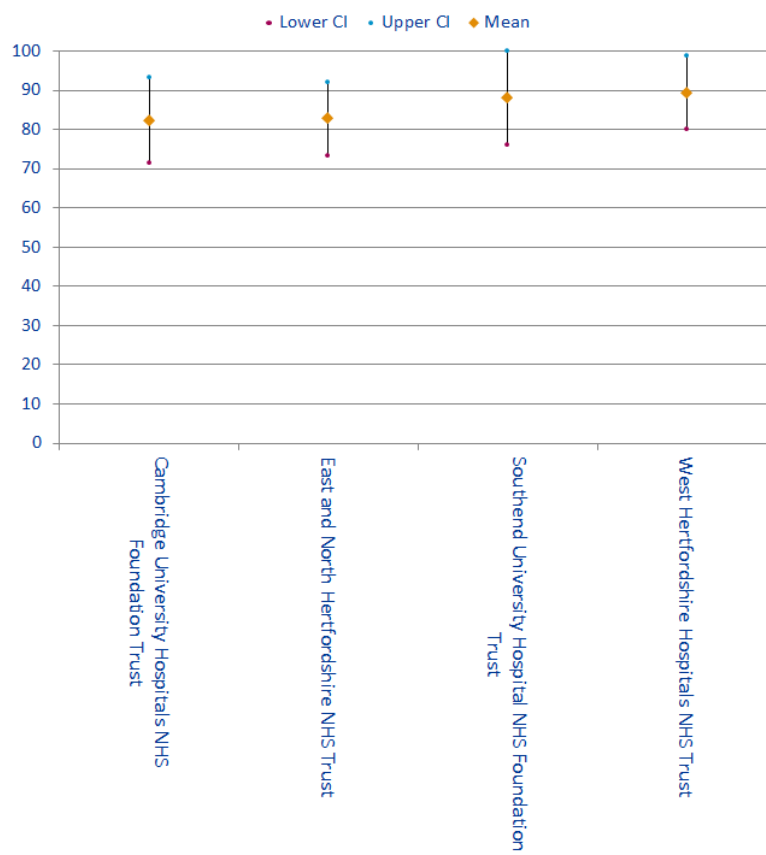
Quartiles	Indicator	Endocrinology and diabetes mellitus Mean	National Mean
Quartile 1	Adequate Experience	76.67	83.6
	Clinical Supervision	84.58	92.14
	Clinical Supervision out of hours	80.03	91.62
	Feedback	70.37	79.53
	Induction	76.67	86.73
	Local Teaching	52.83	62.18
	Overall Satisfaction	77.56	83.49
	Regional Teaching	60.87	68.48
	Study Leave	59.17	72.78
	Supportive environment	67.78	76.57
	Work Load	33.22	48.09
Quartile 2	Access to Educational Resources	70.86	70.44
	Educational Supervision	87.04	89.55
Quartile 3			
Quartile 4	Handover	81.62	71.27

## Endocrinology and Diabetes Mellitus

### Outliers

Trusts	Study Leave	Regional Teaching	Local Teaching	Feedback	Access to Educational Resources	Educational Supervision	Work Load	Supportive environment	Adequate Experience	Induction	Handover	Clinical Supervision out of hours	Clinical Supervision	Overall Satisfaction
Cambridge University Hospitals NHS Foundation Trust										A				
East and North Hertfordshire NHS Trust														
Southend University Hospital NHS Foundation Trust									A	A				
West Hertfordshire Hospitals NHS Trust														

### Overall Satisfaction Means



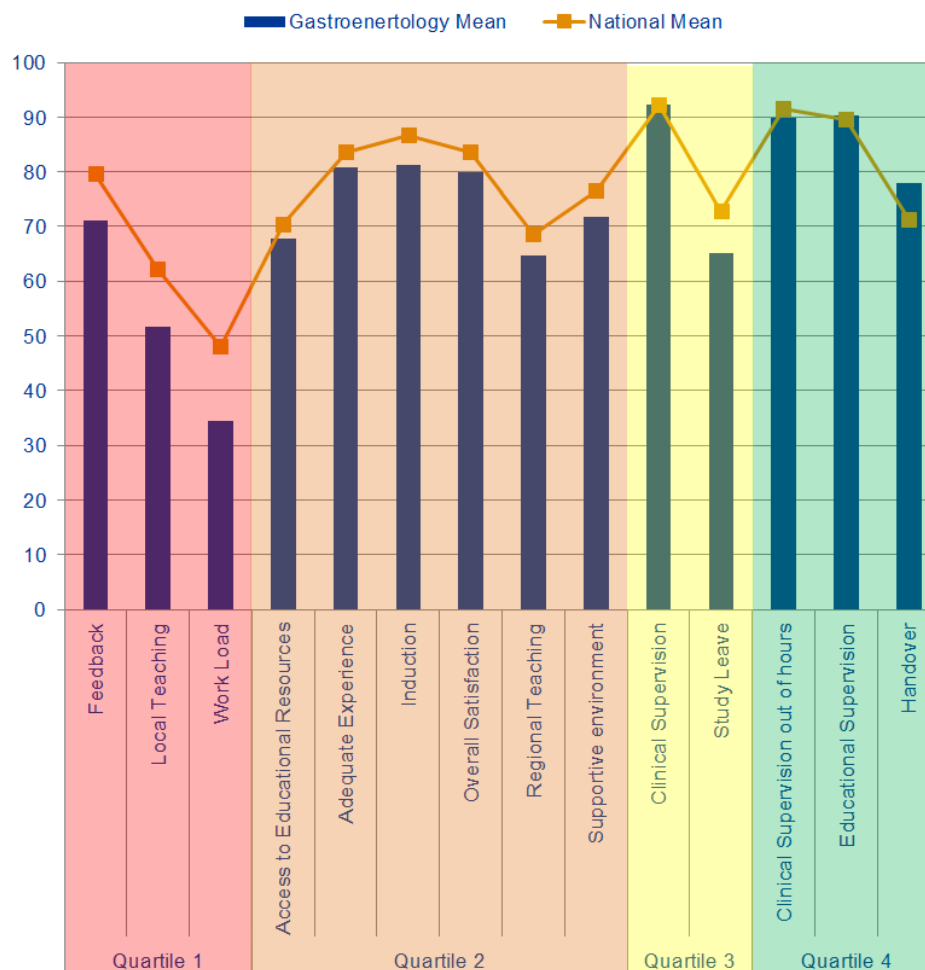
## Endocrinology and Diabetes Mellitus

### Outlier Trends

		Patient Safety					Educational Development					Training Environment	GREEN OUTLIERS			RED OUTLIERS			2014 to 2015 CHANGE ↑ BETTER → STATUS QUO ↓ WORSE	
Trusts	Overall Satisfaction	Clinical Supervision	Clinical Supervision out of hours	Handover	Induction	Work Load	Educational Supervision	Adequate Experience	Feedback	Local Teaching	Regional Teaching	Supportive environment	Access to Educational Resources	2013	2014	2015	2013	2014		2015
Southend																2				
Cambridge University				2											1	1	3	4		
East and North Herts																		3	2	
West Herts																	1			
Total														0	1	3	4	7	2	↑↑



## Indicator Means



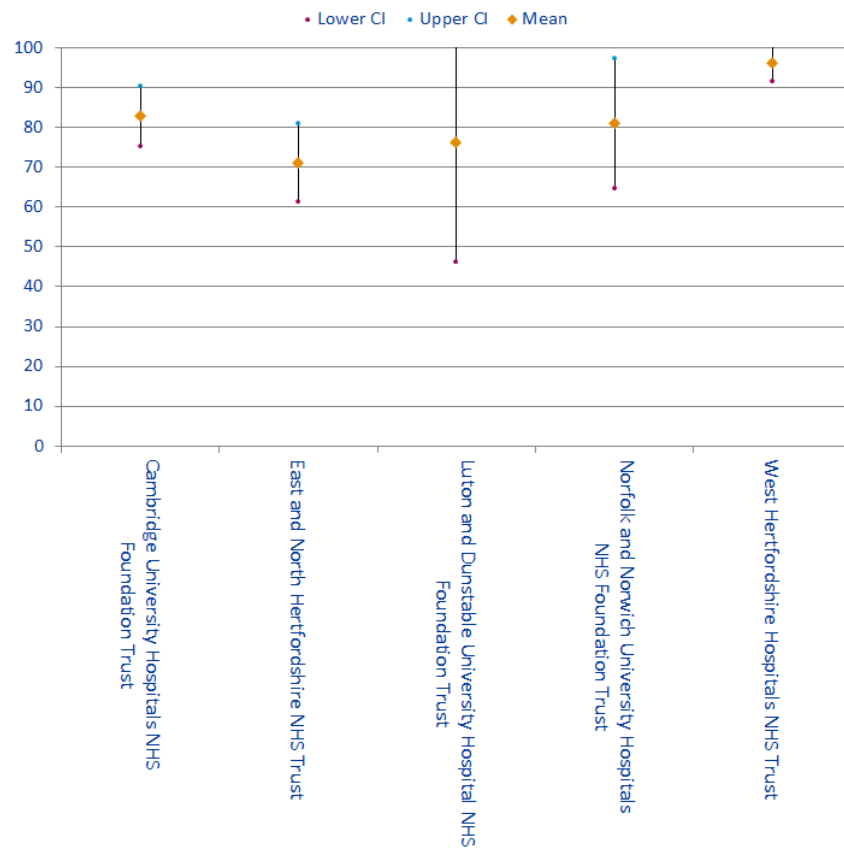
Quartiles	Indicator	Gastroenterology Mean	National Mean
Quartile 1	Feedback	71.09	79.53
	Local Teaching	51.79	62.18
	Work Load	34.38	48.09
Quartile 2	Access to Educational Resources	67.79	70.44
	Adequate Experience	80.88	83.60
	Induction	81.18	86.73
	Overall Satisfaction	80.00	83.49
	Regional Teaching	64.65	68.48
	Supportive environment	71.76	76.57
	Clinical Supervision	92.37	92.14
Quartile 3	Study Leave	65.05	72.78
	Clinical Supervision out of hours	89.96	91.62
Quartile 4	Educational Supervision	90.20	89.55
	Handover	78.03	71.27

## Gastroenterology

### Outliers

Trusts	Study Leave	Regional Teaching	Local Teaching	Feedback	Access to Educational Resources	Educational Supervision	Work Load	Supportive environment	Adequate Experience	Induction	Handover	Clinical Supervision out of hours	Clinical Supervision	Overall Satisfaction
Cambridge University Hospitals NHS Foundation Trust						B								
East and North Hertfordshire NHS Trust					B				B				B	
Luton and Dunstable University Hospital NHS Foundation Trust														
Norfolk and Norwich University Hospitals NHS Foundation Trust														
West Hertfordshire Hospitals NHS Trust								A			B			

### Overall Satisfaction Means

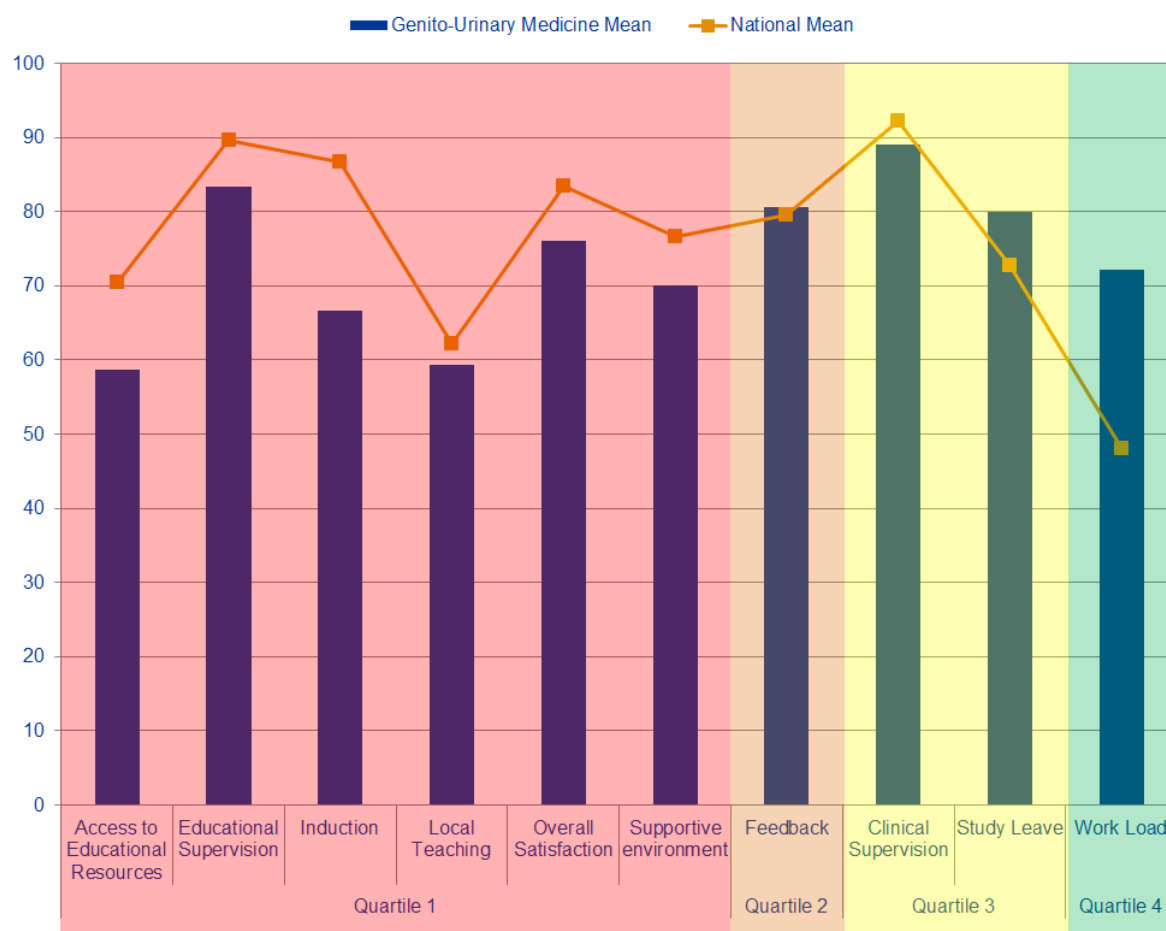


## Outlier Trends

		Patient Safety					Educational Development						Training Environment	GREEN OUTLIERS			RED OUTLIERS			2014 to 2015 CHANGE ↑ BETTER → STATUS QUO ↓ WORSE	
Trusts	Overall Satisfaction	Clinical Supervision	Clinical Supervision out of hours	Handover	Induction	Work Load	Educational Supervision	Adequate Experience	Feedback	Local Teaching	Regional Teaching	Supportive environment	Study Leave	Access to Educational Resources	2013	2014	2015	2013	2014		2015
Norfolk and Norwich															2	1					
Cambridge University						2									1					1	
Luton And Dunstable																					
East and North Herts														2		1			3	3	
West Herts																1	1	1		1	
Total															3	3	1	1	3	5	↓ ↓

## Genito-Urinary Medicine

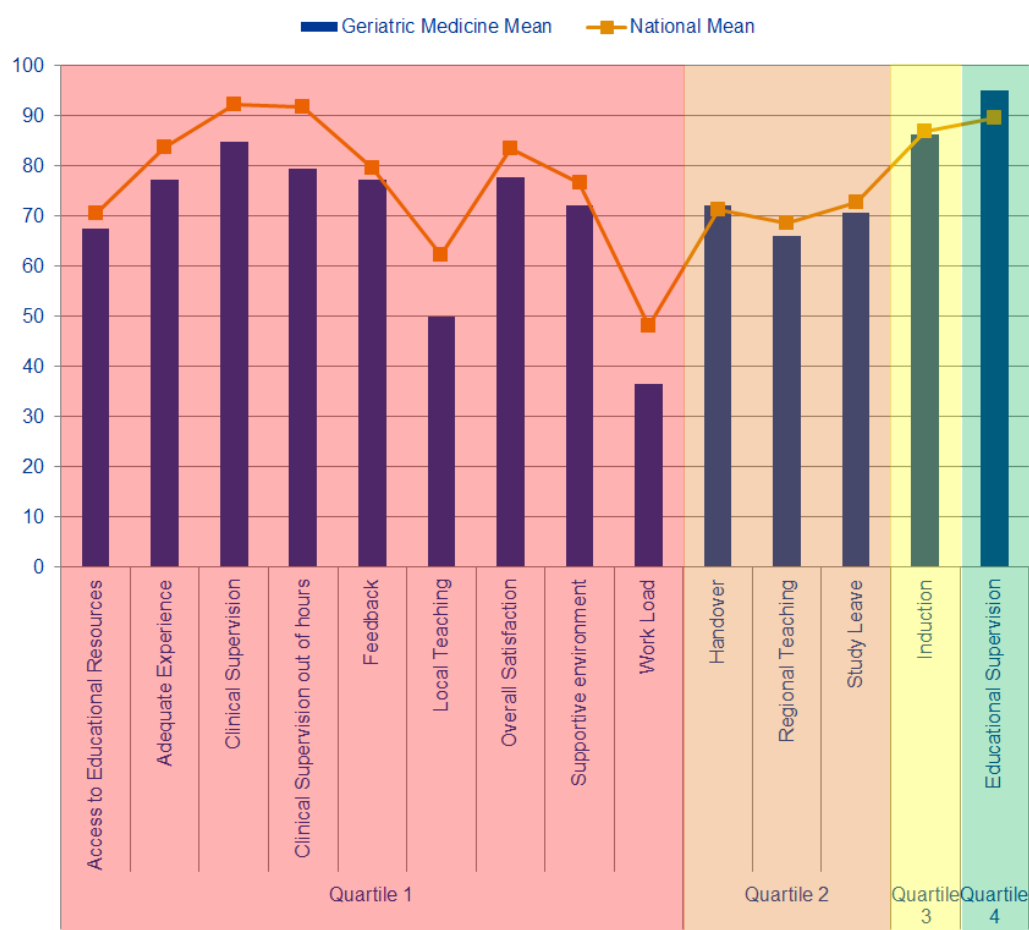
### Indicator Means



Quartiles	Indicator	Genito-Urinary Medicine Mean	National Mean
Quartile 1	Access to Educational Resources	58.73	70.44
	Educational Supervision	83.33	89.55
	Induction	66.67	86.73
	Local Teaching	59.33	62.18
	Overall Satisfaction	76.00	83.49
	Supportive environment	70.00	76.57
Quartile 2	Feedback	80.55	79.53
Quartile 3	Clinical Supervision	89.08	92.14
	Study Leave	80.00	72.78
Quartile 4	Work Load	72.22	48.09

## Geriatric Medicine

### Indicator Means

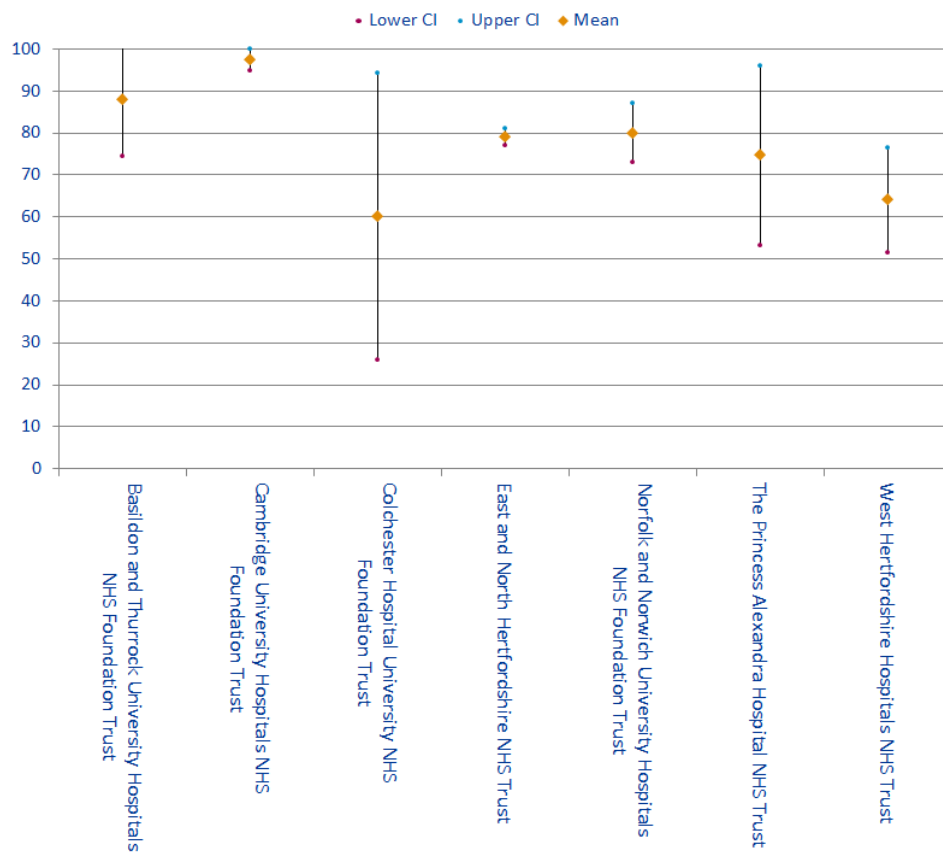


Quartiles	Indicator	Geriatric Medicine Mean	National Mean
Quartile 1	Access to Educational Resources	67.51	70.44
	Adequate Experience	77.20	83.60
	Clinical Supervision	84.80	92.14
	Clinical Supervision out of hours	79.36	91.62
	Feedback	77.08	79.53
	Local Teaching	49.92	62.18
	Overall Satisfaction	77.60	83.49
	Supportive environment	72.00	76.57
	Work Load	36.50	48.09
	Handover	72.00	71.27
Quartile 2	Regional Teaching	66.04	68.48
	Study Leave	70.60	72.78
Quartile 3	Induction	86.13	86.73
Quartile 4	Educational Supervision	95.00	89.55

## Outliers

Trusts	Study Leave	Regional Teaching	Local Teaching	Feedback	Access to Educational Resources	Educational Supervision	Work Load	Supportive environment	Adequate Experience	Induction	Handover	Clinical Supervision out of hours	Clinical Supervision	Overall Satisfaction
Basildon and Thurrock University Hospitals NHS Foundation Trust							A							
Cambridge University Hospitals NHS Foundation Trust				A				A	A	A			A	
Colchester Hospital University NHS Foundation Trust											A			
East and North Hertfordshire NHS Trust														
Norfolk and Norwich University Hospitals NHS Foundation Trust														
The Princess Alexandra Hospital NHS Trust														
West Hertfordshire Hospitals NHS Trust														

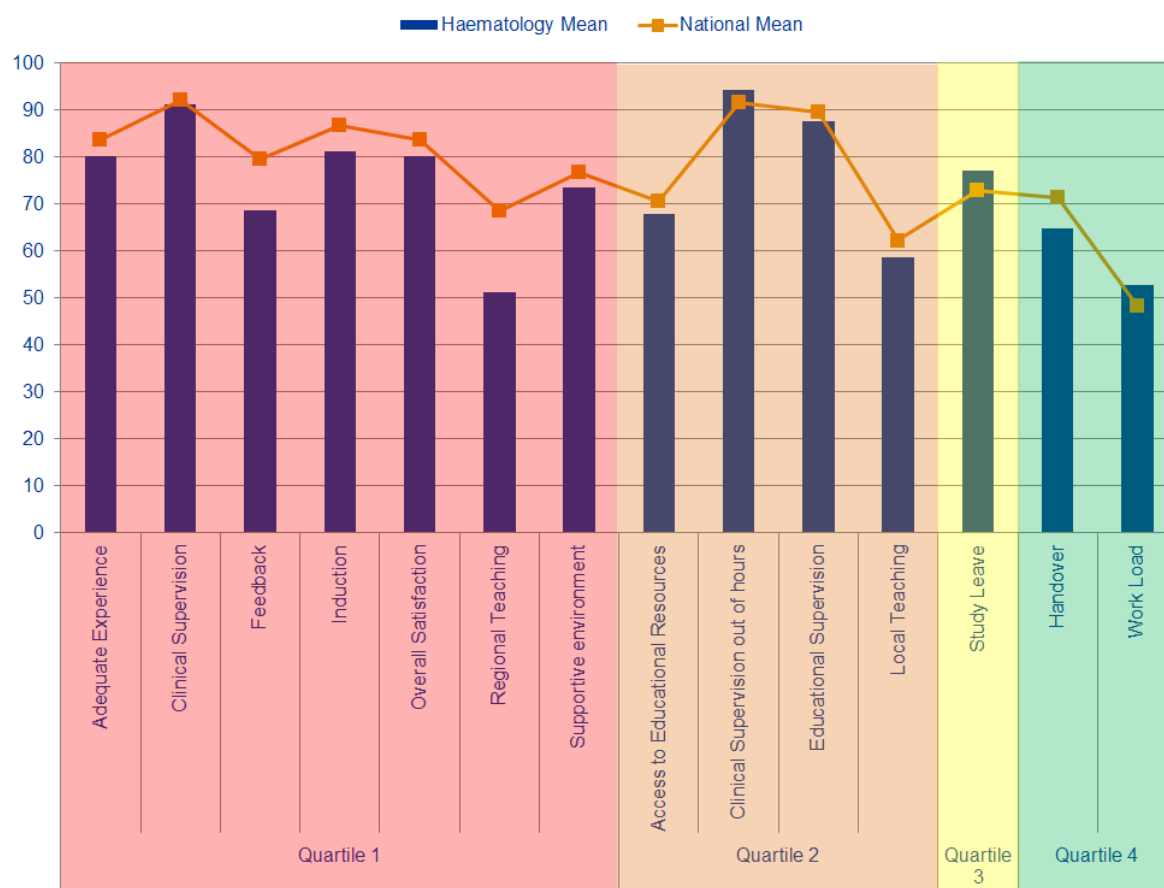
## Overall Satisfaction Means



# Outlier Trends

		Patient Safety					Educational Development						Training Environment	GREEN OUTLIERS			RED OUTLIERS			2014 to 2015 CHANGE ↑ BETTER → STATUS QUO ↓ WORSE	
Trusts	Overall Satisfaction	Clinical Supervision	Clinical Supervision out of hours	Handover	Induction	Work Load	Educational Supervision	Adequate Experience	Feedback	Local Teaching	Regional Teaching	Study Leave	Supportive environment	Access to Educational Resources	2013	2014	2015	2013	2014		2015
Basildon and Thurrock																	1				
Colchester																	1				
Princess Alexandra																			1	1	
Norfolk and Norwich																	1		1		
Cambridge University					3			2								3	1	5			
East and North Herts																			2	1	
West Herts														2				3	1	4	
Total																3	2	7	5	3	6

## Indicator Means



Quartiles	Indicator	Haematology Mean	National Mean
Quartile 1	Adequate Experience	80	83.6
	Clinical Supervision	91.25	92.14
	Feedback	68.61	79.53
	Induction	81.25	86.73
	Overall Satisfaction	80.00	83.49
	Regional Teaching	51.25	68.48
	Supportive environment	73.44	76.57
Quartile 2	Access to Educational Resources	67.74	70.44
	Clinical Supervision out of hours	94.31	91.62
	Educational Supervision	87.50	89.55
	Local Teaching	58.50	62.18
Quartile 3	Study Leave	76.98	72.78
Quartile 4	Handover	64.77	71.27
	Work Load	52.60	48.09

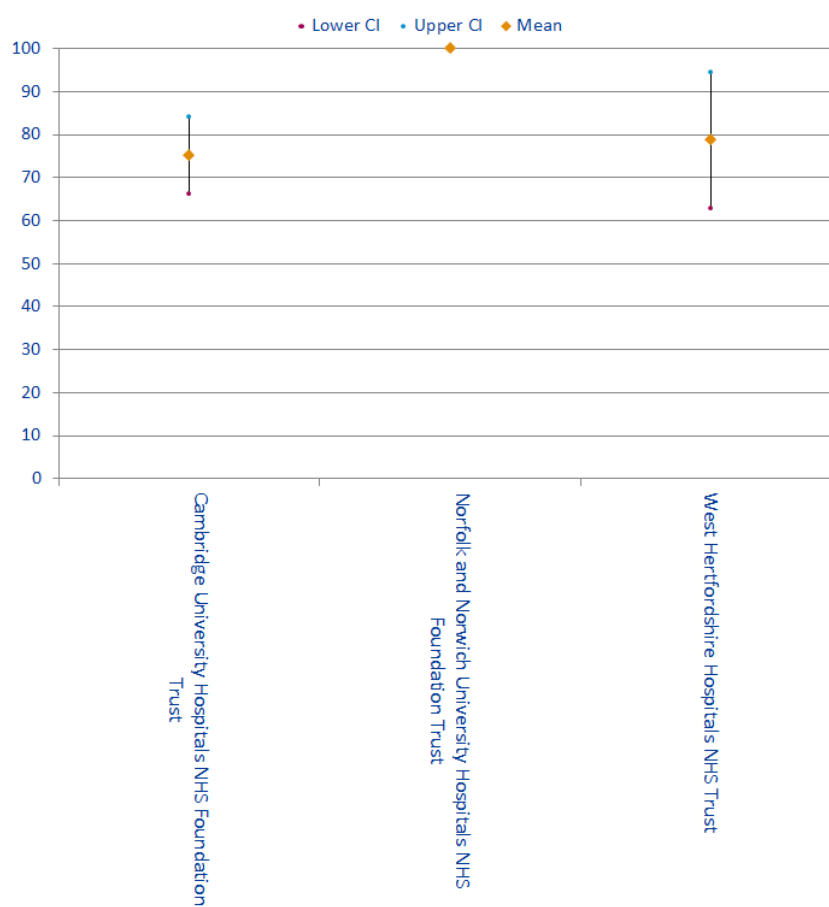


## Haematology

### Outliers

Trusts	Study Leave	Regional Teaching	Local Teaching	Feedback	Access to Educational Resources	Educational Supervision	Work Load	Supportive environment	Adequate Experience	Induction	Handover	Clinical Supervision out of hours	Clinical Supervision	Overall Satisfaction
Cambridge University Hospitals NHS Foundation Trust		B												
Norfolk and Norwich University Hospitals NHS Foundation Trust		B	A		A				A	A			A	A
West Hertfordshire Hospitals NHS Trust		B					A							

### Overall Satisfaction Means

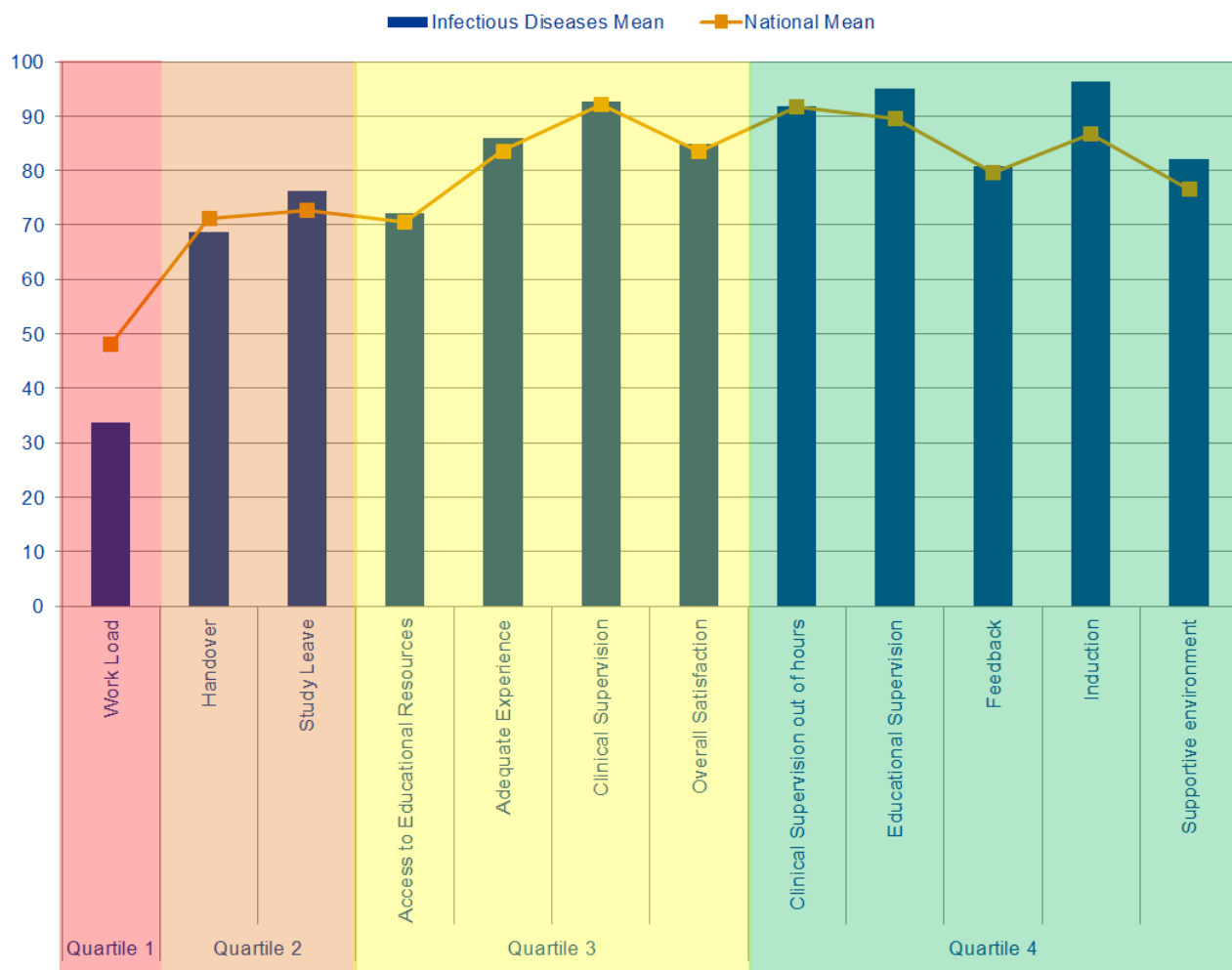


## Outlier Trends

		Patient Safety			Educational Development					Training Environment	GREEN OUTLIERS	RED OUTLIERS			2014 to 2015 CHANGE ↑ BETTER → STATUS QUO ↓ WORSE						
Trusts	Overall Satisfaction	Clinical Supervision	Clinical Supervision out of hours	Handover	Induction	Work Load	Educational Supervision	Adequate Experience	Feedback	Local Teaching	Regional Teaching	Supportive environment	Study Leave	Access to Educational Resources		2013	2014	2015	2013	2014	2015
Norfolk and Norwich		2			2					2	2					3	2	6	1		1
Cambridge University											2									1	1
West Herts																		2			1
Total																3	2	8	1	1	3

## Infectious Diseases

### Indicator Means

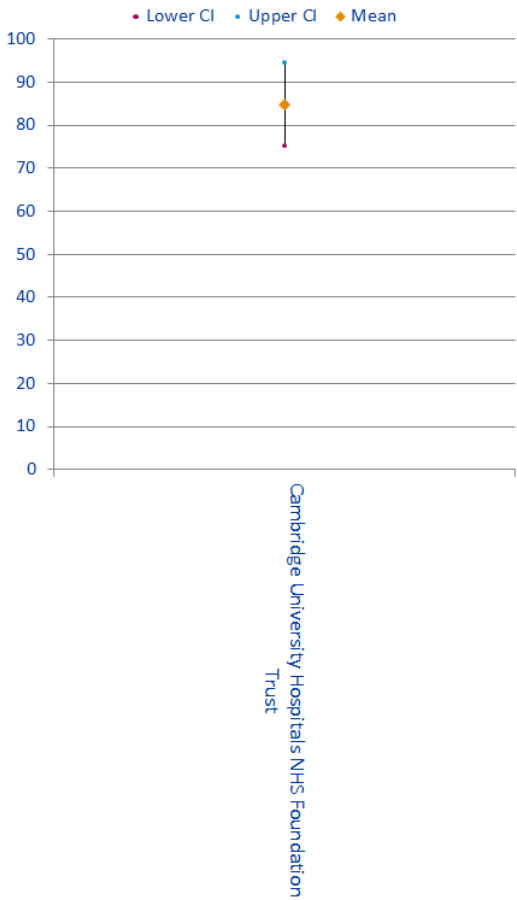


Quartiles	Indicator	Infectious Diseases Mean	National Mean
Quartile 1	Work Load	33.75	48.09
Quartile 2	Handover	68.75	71.27
Quartile 2	Study Leave	76.33	72.78
Quartile 3	Access to Educational Resources	72.08	70.44
Quartile 3	Adequate Experience	86.00	83.60
Quartile 3	Clinical Supervision	92.70	92.14
Quartile 3	Overall Satisfaction	84.80	83.49
Quartile 4	Clinical Supervision out of hours	91.90	91.62
Quartile 4	Educational Supervision	95.00	89.55
Quartile 4	Feedback	80.83	79.53
Quartile 4	Induction	96.25	86.73
Quartile 4	Supportive environment	82.00	76.57

Outliers

Trusts	Study Leave	
	Regional Teaching	
	Local Teaching	
	Feedback	
	Access to Educational Resources	
	Educational Supervision	
	Work Load	
	Supportive environment	
	Adequate Experience	
	Induction	A
	Handover	
	Clinical Supervision out of hours	
	Clinical Supervision	
	Overall Satisfaction	
Cambridge University Hospitals NHS Foundation Trust		

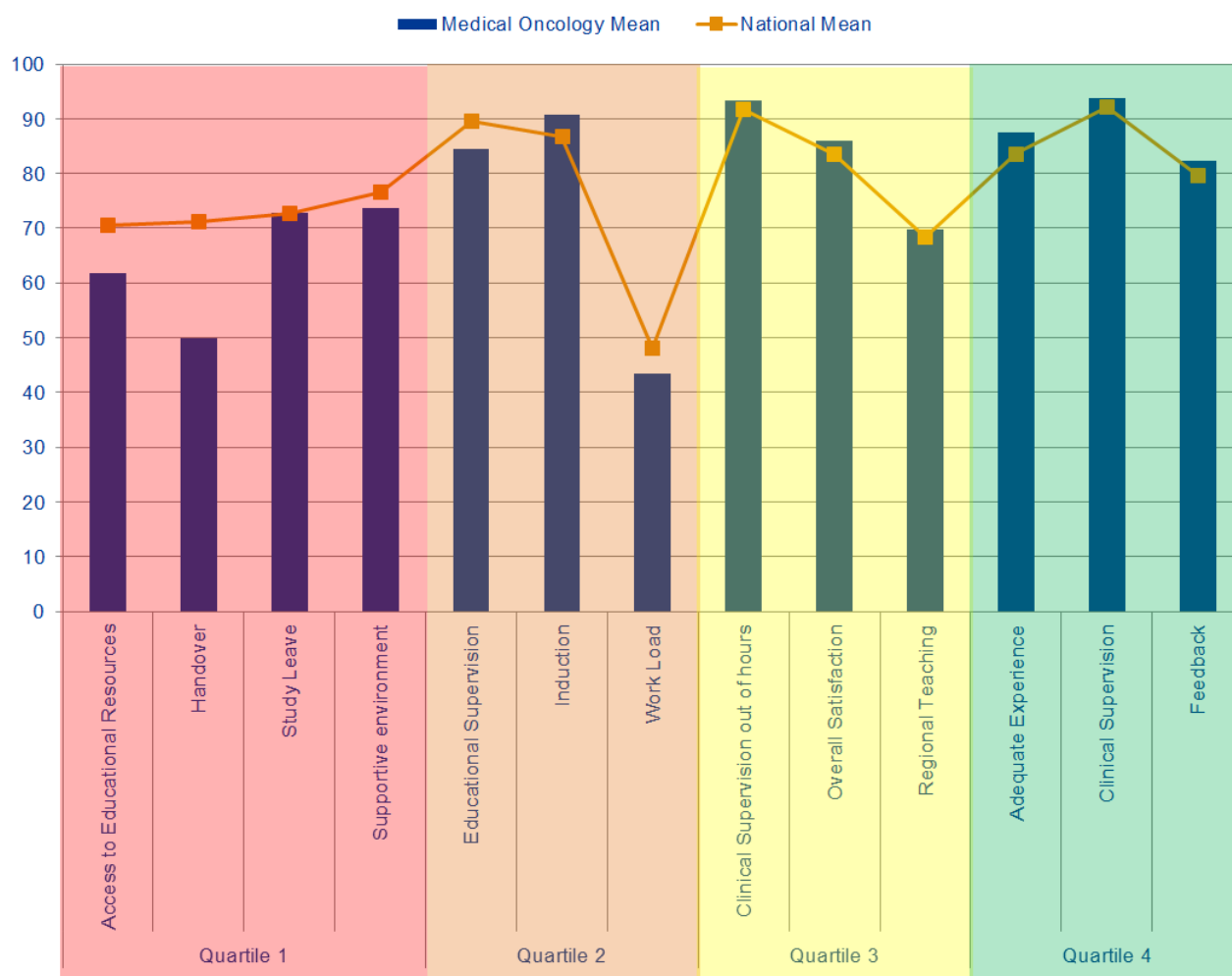
Overall Satisfaction Means



## Outlier Trends

		Patient Safety			Educational Development						Training Environment	GREEN OUTLIERS			RED OUTLIERS			2014 to 2015 CHANGE ↑ BETTER → STATUS QUO ↓ WORSE
Trusts	Overall Satisfaction	Clinical Supervision	Clinical Supervision out of hours	Handover	Induction	Work Load	Educational Supervision	Adequate Experience	Feedback	Local Teaching	Regional Teaching	Study Leave	Supportive environment	Access to Educational Resources	2013	2014	2015	
Cambridge University																	1	
Total															0	0	1	↑→

## Indicator Means



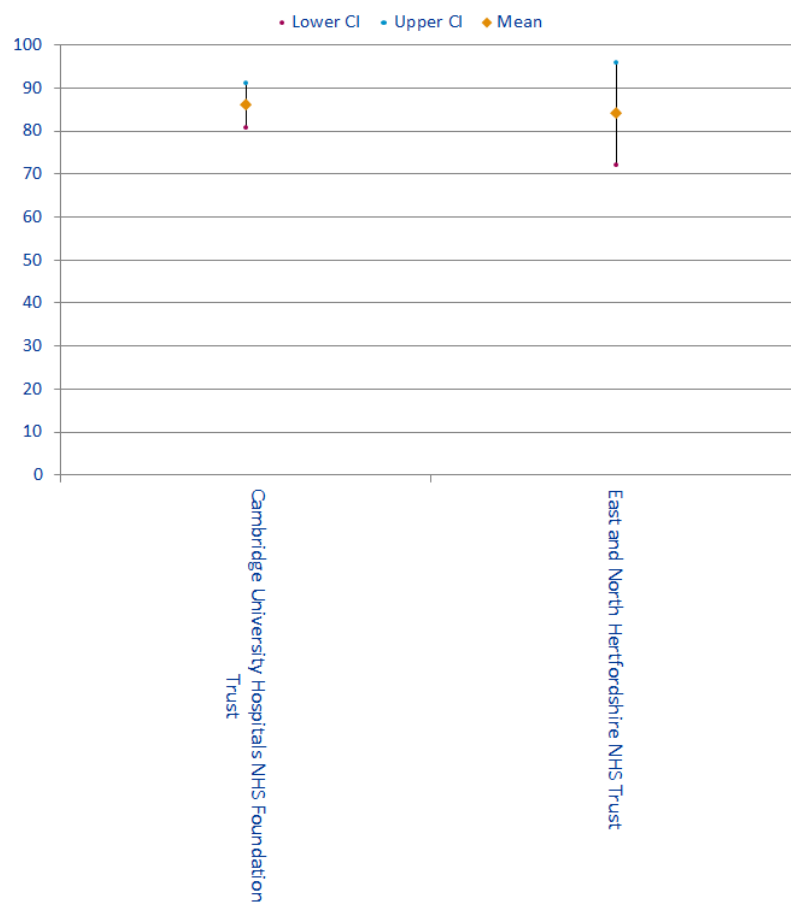
Quartiles	Indicator	Medical Oncology Mean	National Mean
Quartile 1	Access to Educational Resources	61.69	70.44
	Handover	50.00	71.27
	Study Leave	72.78	72.78
	Supportive environment	73.75	76.57
Quartile 2	Educational Supervision	84.38	89.55
	Induction	90.63	86.73
	Work Load	43.49	48.09
Quartile 3	Clinical Supervision out of hours	93.25	91.62
	Overall Satisfaction	86.00	83.49
	Regional Teaching	69.69	68.48
Quartile 4	Adequate Experience	87.50	83.60
	Clinical Supervision	93.75	92.14
	Feedback	82.29	79.53

## Medical Oncology

### Outliers

Trusts	Study Leave	Regional Teaching	Local Teaching	Feedback	Access to Educational Resources	Educational Supervision	Work Load	Supportive environment	Adequate Experience	Induction	Handover	Clinical Supervision out of hours	Clinical Supervision	Overall Satisfaction
Cambridge University Hospitals NHS Foundation Trust			B											
East and North Hertfordshire NHS Trust											A			

### Overall Satisfaction Means

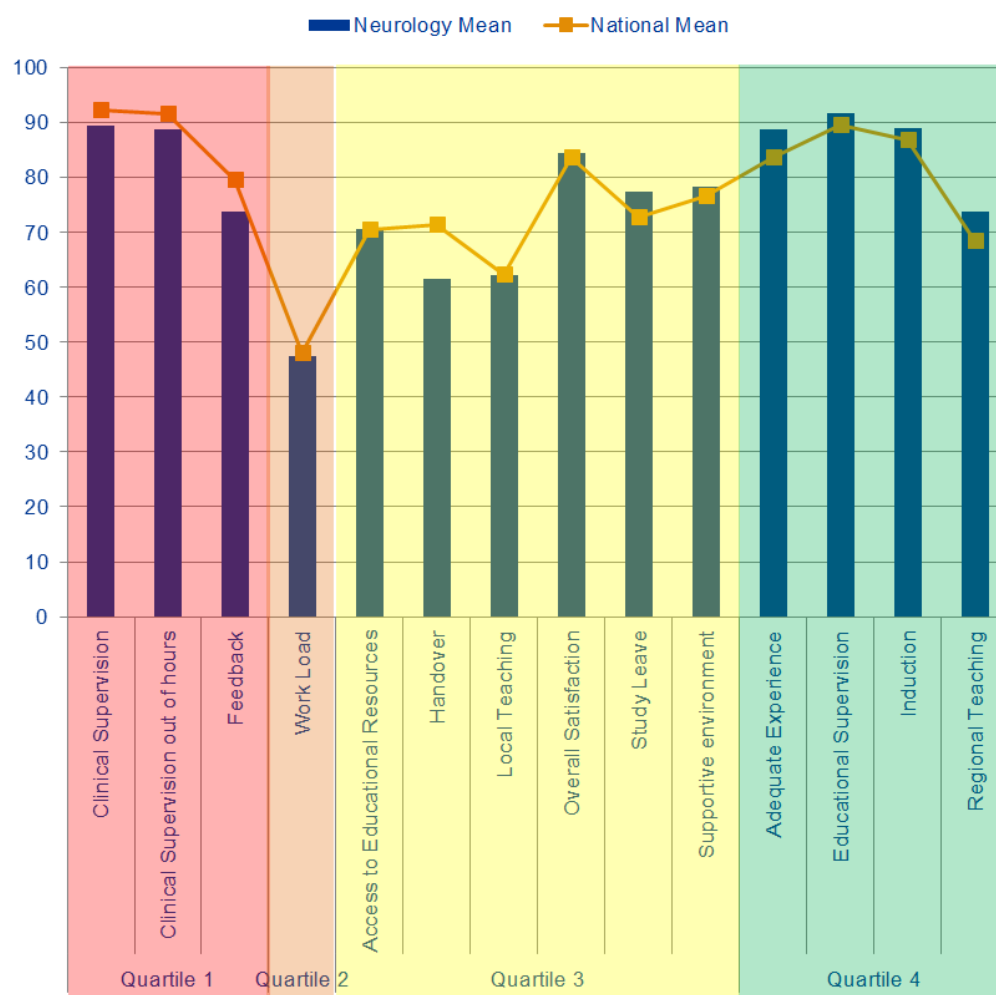


## Outlier Trends

		Patient Safety			Educational Development					Training Environment	GREEN OUTLIERS	RED OUTLIERS		2014 to 2015 CHANGE ↑ BETTER → STATUS QUO ↓ WORSE						
Trusts																				
	Overall Satisfaction	Clinical Supervision	Clinical Supervision out of hours	Handover	Induction	Work Load	Educational Supervision	Adequate Experience	Feedback	Local Teaching	Regional Teaching	Supportive environment	Study Leave	Access to Educational Resources	2013	2014	2015	2013	2014	2015
Cambridge University																1		1		1
East and North Herts																	1			
Total															0	1	1	1	0	1
																				→↓



## Indicator Means



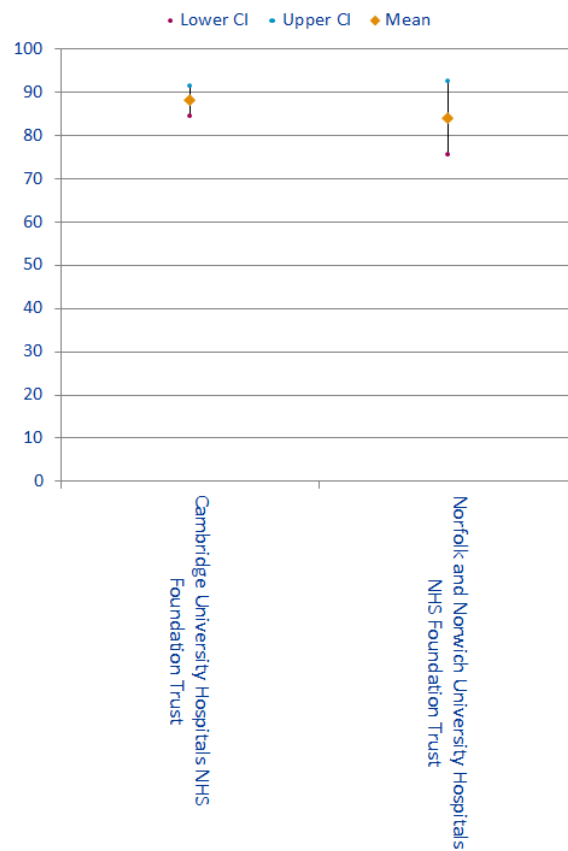
Quartiles	Indicator	Neurology Mean	National Mean
Quartile 1	Clinical Supervision	89.33	92.14
	Clinical Supervision out of hours	88.62	91.62
	Feedback	73.61	79.53
Quartile 2	Work Load	47.50	48.09
Quartile 3	Access to Educational Resources	70.62	70.44
	Handover	61.46	71.27
	Local Teaching	62.20	62.18
	Overall Satisfaction	84.27	83.49
	Study Leave	77.44	72.78
Quartile 4	Supportive environment	78.33	76.57
	Adequate Experience	88.67	83.60
	Educational Supervision	91.67	89.55
	Induction	88.93	86.73
	Regional Teaching	73.77	68.48

Neurology

## Outliers

	Study Leave		
	Regional Teaching		
	Local Teaching	A	
	Feedback		
	Access to Educational Resources		
	Educational Supervision		
	Work Load		
	Supportive environment		
	Adequate Experience	A	A
	Induction		
	Handover		
	Clinical Supervision out of hours		
	Clinical Supervision		
	Overall Satisfaction		
Trusts			
Cambridge University Hospitals NHS Foundation Trust			
Norfolk and Norwich University Hospitals NHS Foundation Trust			

## Overall Satisfaction Means

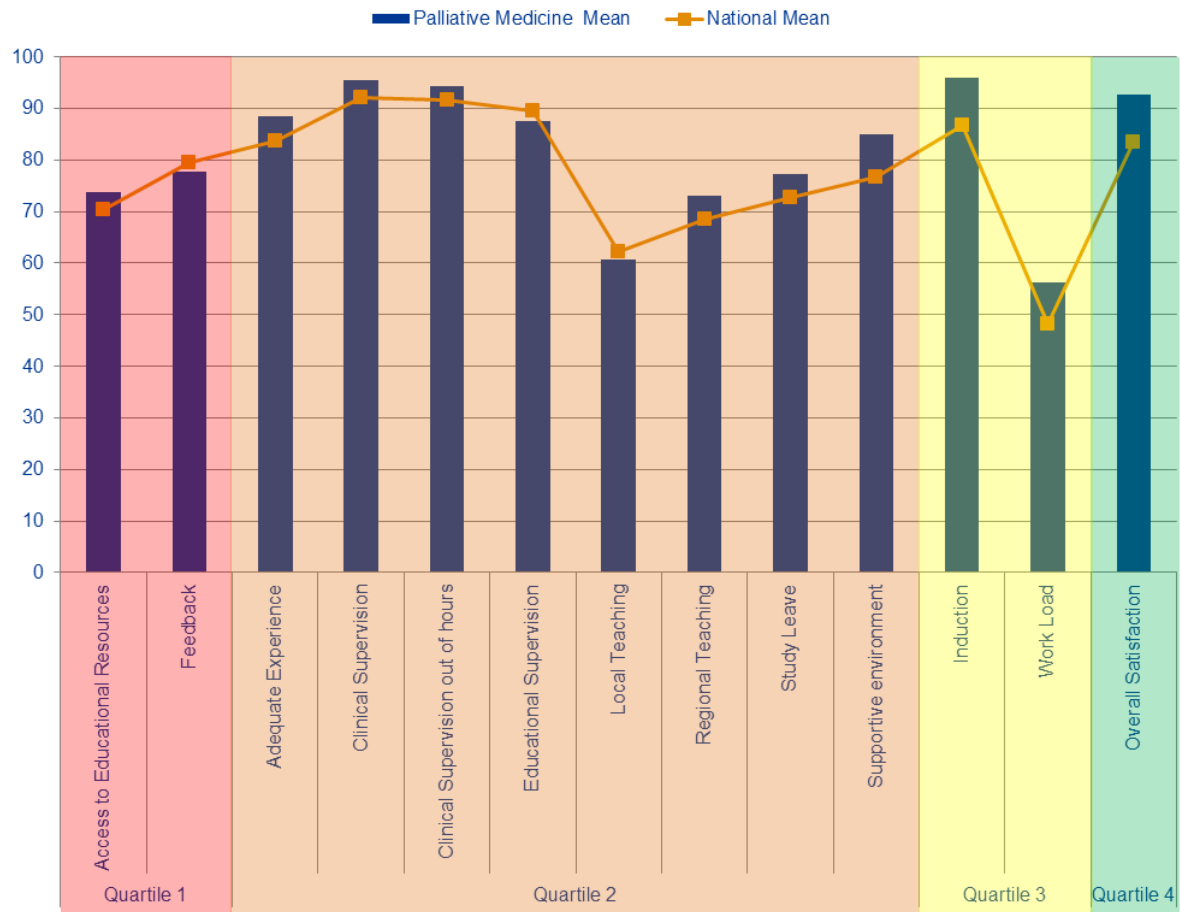


## Outlier Trends

		Patient Safety			Educational Development						Training Environment	GREEN OUTLIERS	RED OUTLIERS		2014 to 2015 CHANGE ↑ BETTER → STATUS QUO ↓ WORSE					
Trusts	Overall Satisfaction	Clinical Supervision	Clinical Supervision out of hours	Handover	Induction	Work Load	Educational Supervision	Adequate Experience	Feedback	Local Teaching	Regional Teaching	Study Leave	Supportive environment	Access to Educational Resources		2013	2014	2015	2013	2014
Norfolk and Norwich															3					
Cambridge University					2					2					4		3			
Total															7	0	3	0	0	0

## Palliative Medicine

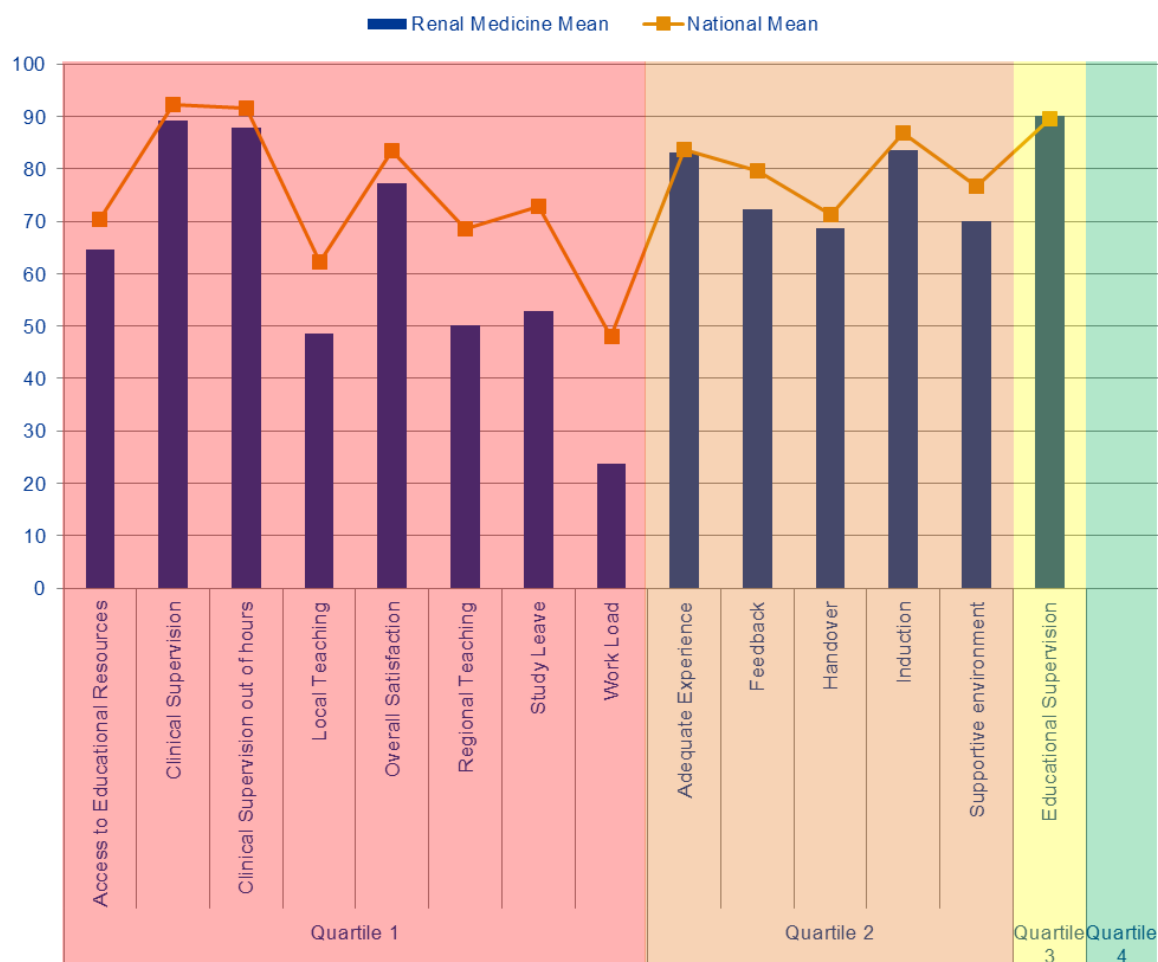
### Indicator Means



Quartiles	Indicator	Palliative Medicine Mean	National Mean
Quartile 1	Access to Educational Resources	73.76	70.44
	Feedback	77.78	79.53
Quartile 2	Adequate Experience	88.33	83.60
	Clinical Supervision	95.42	92.14
	Clinical Supervision out of hours	94.33	91.62
	Educational Supervision	87.50	89.55
	Local Teaching	60.67	62.18
	Regional Teaching	73.08	68.48
	Study Leave	77.22	72.78
	Supportive environment	85.00	76.57
Quartile 3	Induction	95.83	86.73
	Work Load	56.25	48.09
Quartile 4	Overall Satisfaction	92.67	83.49

## Renal Medicine

### Indicator Means

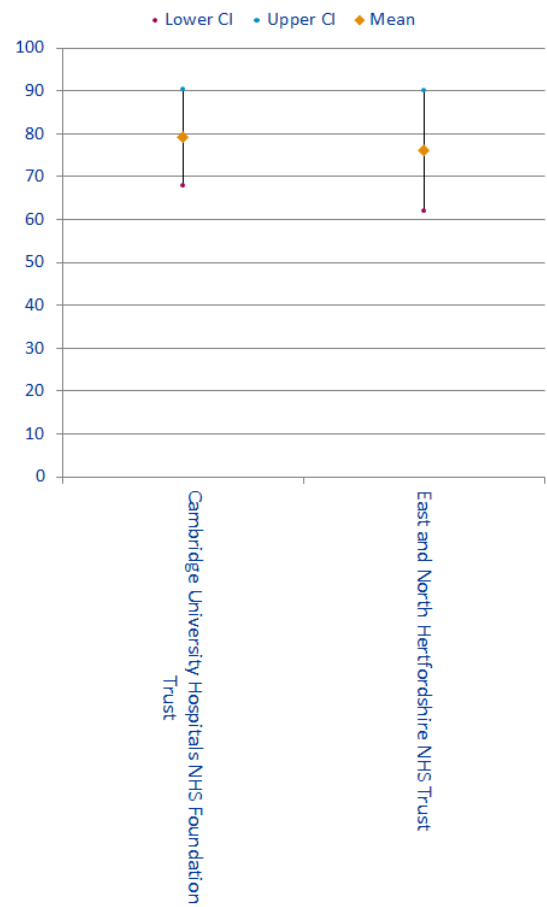


Quartiles	Indicator	Renal Medicine Mean	National Mean
Quartile 1	Access to Educational Resources	64.55	70.44
	Clinical Supervision	89.20	92.14
	Clinical Supervision out of hours	87.90	91.62
	Local Teaching	48.50	62.18
	Overall Satisfaction	77.20	83.49
	Regional Teaching	50.08	68.48
	Study Leave	52.92	72.78
	Work Load	23.75	48.09
Quartile 2	Adequate Experience	83.00	83.60
	Feedback	72.22	79.53
	Handover	68.75	71.27
	Induction	83.50	86.73
Quartile 3	Supportive environment	70.00	76.57
	Educational Supervision	90.00	89.55
Quartile 4			

Outliers

Trusts	Study Leave		
	Regional Teaching	B	B
	Local Teaching	B	
	Feedback	B	
	Access to Educational Resources		
	Educational Supervision		
	Work Load	B	
	Supportive environment		
	Adequate Experience		
	Induction		
Clinical Supervision out of hours	Handover		A
Clinical Supervision			
Overall Satisfaction			
Cambridge University Hospitals NHS Foundation Trust			
East and North Hertfordshire NHS Trust			

Overall Satisfaction Means

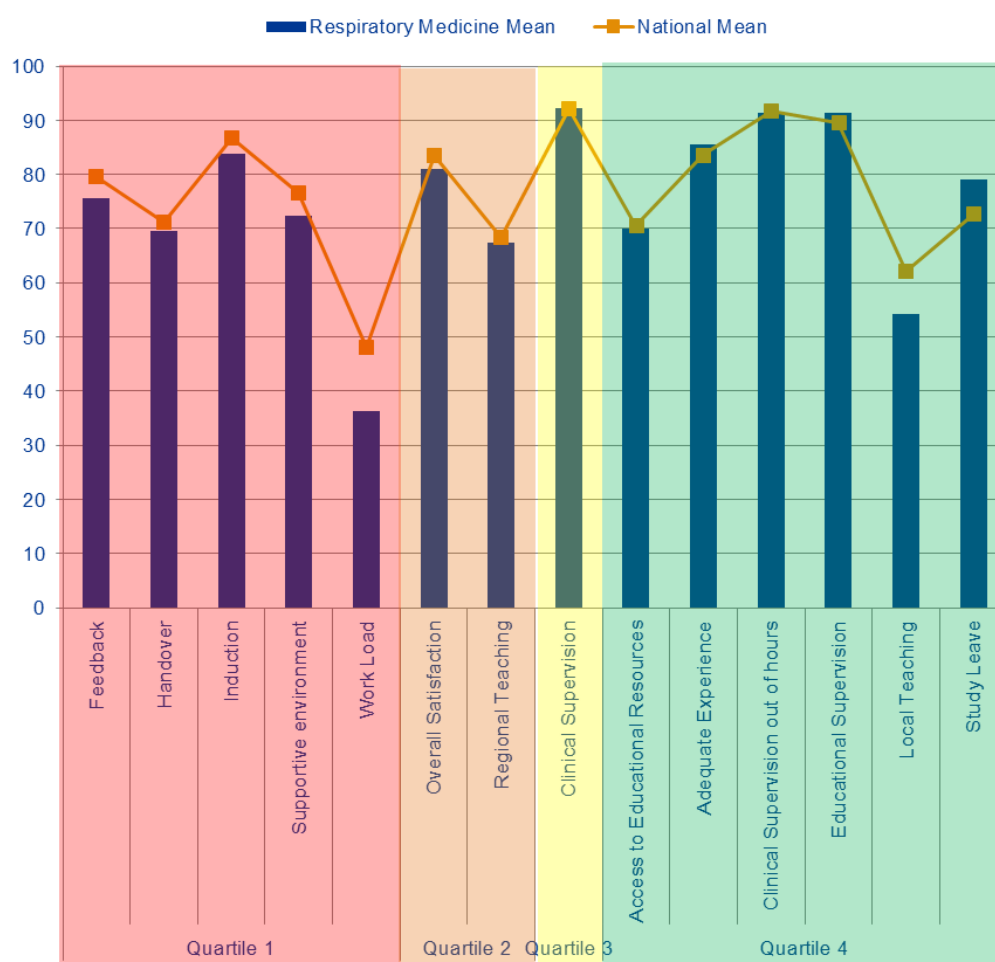


## Outlier Trends

		Patient Safety					Educational Development					Training Environment	GREEN OUTLIERS			RED OUTLIERS			2014 to 2015 CHANGE  ↑ BETTER → STATUS QUO ↓ WORSE		
Trusts	Overall Satisfaction	Clinical Supervision	Clinical Supervision out of hours	Handover	Induction	Work Load	Educational Supervision	Adequate Experience	Feedback	Local Teaching	Regional Teaching	Study Leave	Supportive environment	Access to Educational Resources	2013	2014	2015	2013		2014	2015
Cambridge University						3					2						1		2	2	3
East and North Herts										2						1	2	1	1	2	1
Total															1	3	1	3	4	4	↓→

## Respiratory Medicine

### Indicator Means



Quartiles	Indicator	Respiratory Medicine Mean	National Mean
Quartile 1	Feedback	75.59	79.53
	Handover	69.64	71.27
	Induction	83.79	86.73
	Supportive environment	72.41	76.57
	Work Load	36.28	48.09
Quartile 2	Overall Satisfaction	81.10	83.49
	Regional Teaching	67.37	68.48
Quartile 3	Clinical Supervision	92.17	92.14
Quartile 4	Access to Educational Resources	70.08	70.44
	Adequate Experience	85.52	83.60
	Clinical Supervision out of hours	91.34	91.62
	Educational Supervision	91.38	89.55
	Local Teaching	54.21	62.18
	Study Leave	79.00	72.78

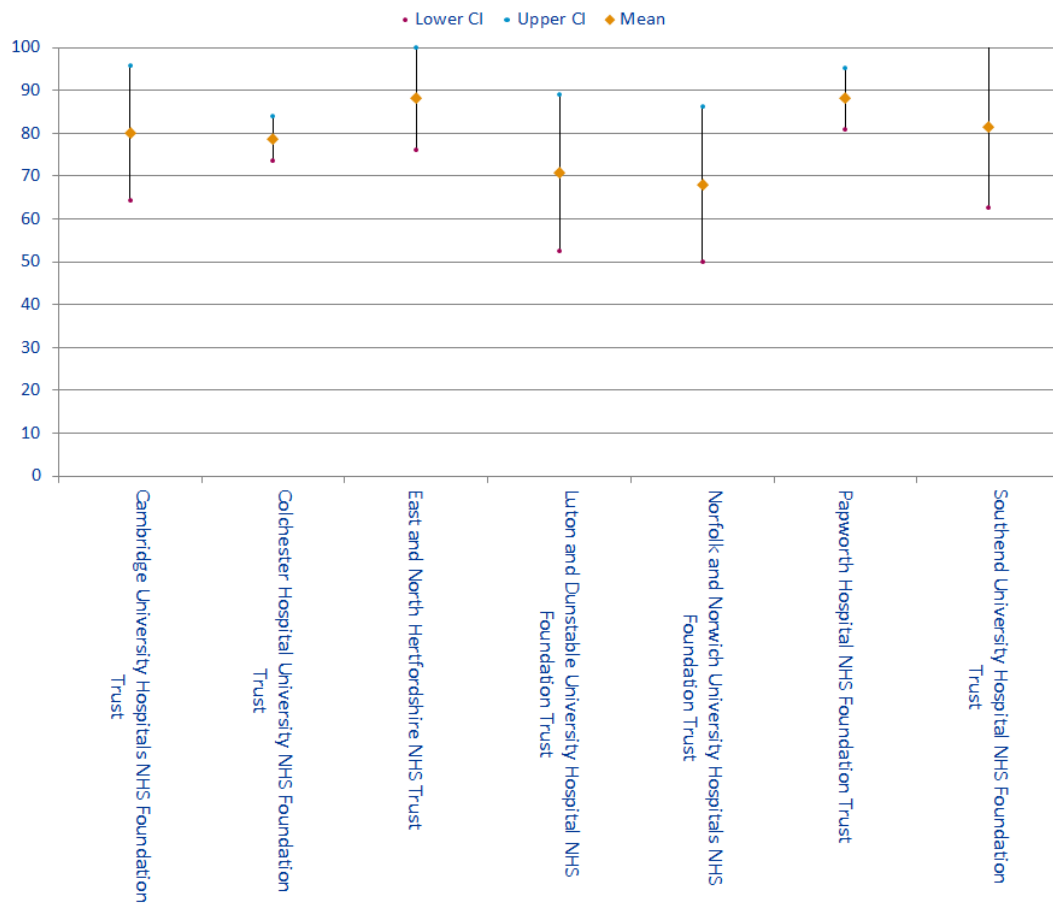


## Respiratory Medicine

### Outliers

Trusts	Study Leave	Regional Teaching	Local Teaching	Feedback	Access to Educational Resources	Educational Supervision	Work Load	Supportive environment	Adequate Experience	Induction	Handover	Clinical Supervision out of hours	Clinical Supervision	Overall Satisfaction
Cambridge University Hospitals NHS Foundation Trust														
Colchester Hospital University NHS Foundation Trust			B								A			
East and North Hertfordshire NHS Trust												A		
Luton and Dunstable University Hospital NHS Foundation Trust				B	B		B							
Norfolk and Norwich University Hospitals NHS Foundation Trust				B	B		B	B						
Papworth Hospital NHS Foundation Trust												A	A	
Southend University Hospital NHS Foundation Trust				B					A	B	B			

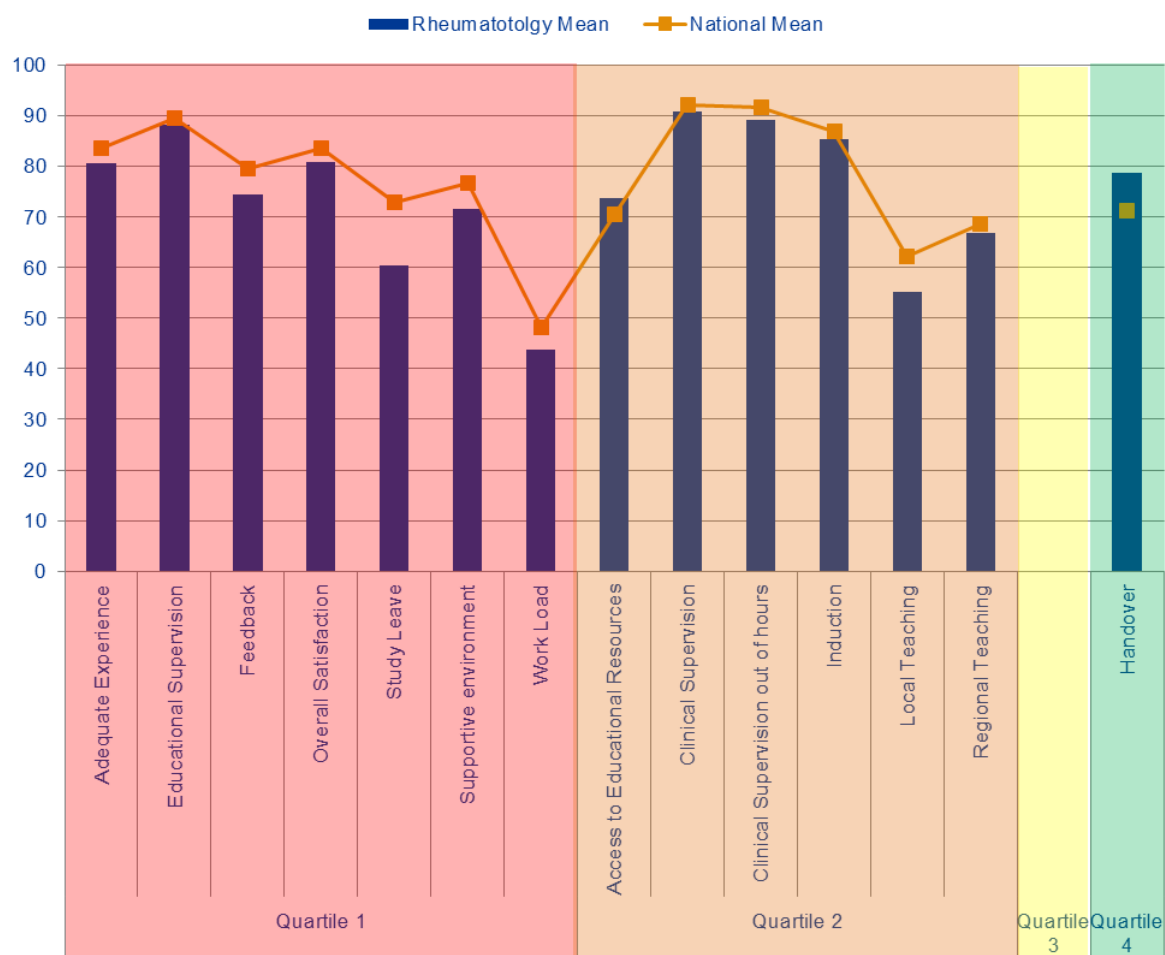
### Overall Satisfaction Means



## Outlier Trends

		Patient Safety				Educational Development						Training Environment	GREEN OUTLIERS		RED OUTLIERS		2014 to 2015 CHANGE ↑ BETTER → STATUS QUO ↓ WORSE			
Trusts	Overall Satisfaction	Clinical Supervision	Clinical Supervision out of hours	Handover	Induction	Work Load	Educational Supervision	Adequate Experience	Feedback	Local Teaching	Regional Teaching	Study Leave	Supportive environment	Access to Educational Resources	2013	2014		2015	2013	2014
Colchester				2											3		1	1		1
Hinchingbrooke																				
Southend																	1			3
Norfolk and Norwich						2				2						1		2		3
Cambridge University																1		1	1	
Papworth		2		3											2	1	2	1	1	1
Luton And Dunstable																				4
East and North Herts																				
Total															6	3	5	7	2	13

## Indicator Means

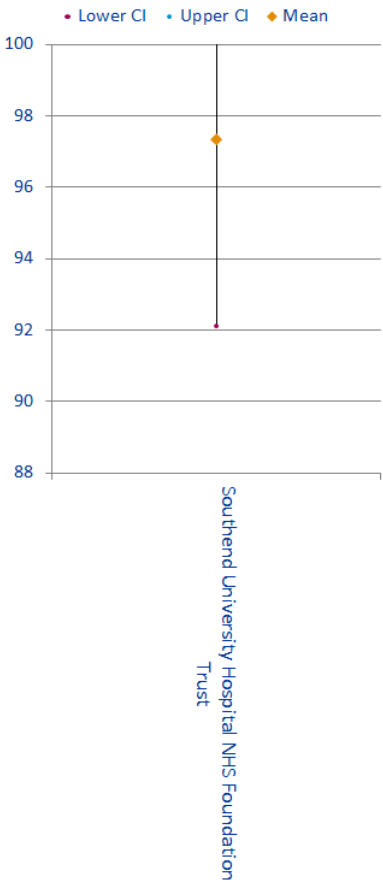


Quartiles	Indicator	Rheumatology Mean	National Mean
Quartile 1	Adequate Experience	80.59	83.6
	Educational Supervision	88.24	89.55
	Feedback	74.27	79.53
	Overall Satisfaction	80.71	83.49
	Study Leave	60.48	72.78
	Supportive environment	71.47	76.57
	Work Load	43.75	48.09
Quartile 2	Access to Educational Resources	73.75	70.44
	Clinical Supervision	90.69	92.14
	Clinical Supervision out of hours	89.00	91.62
	Induction	85.29	86.73
	Local Teaching	55.06	62.18
	Regional Teaching	66.68	68.48
Quartile 3			
Quartile 4	Handover	78.75	71.27

Outliers

Trusts	Study Leave
	Regional Teaching
	Local Teaching
	Feedback
	Access to Educational Resources
	Educational Supervision
	Work Load
	Supportive environment
	Adequate Experience
	Induction
	Handover
	Clinical Supervision out of hours
	Clinical Supervision
	Overall Satisfaction
Southend University Hospital NHS Foundation Trust	A
	B

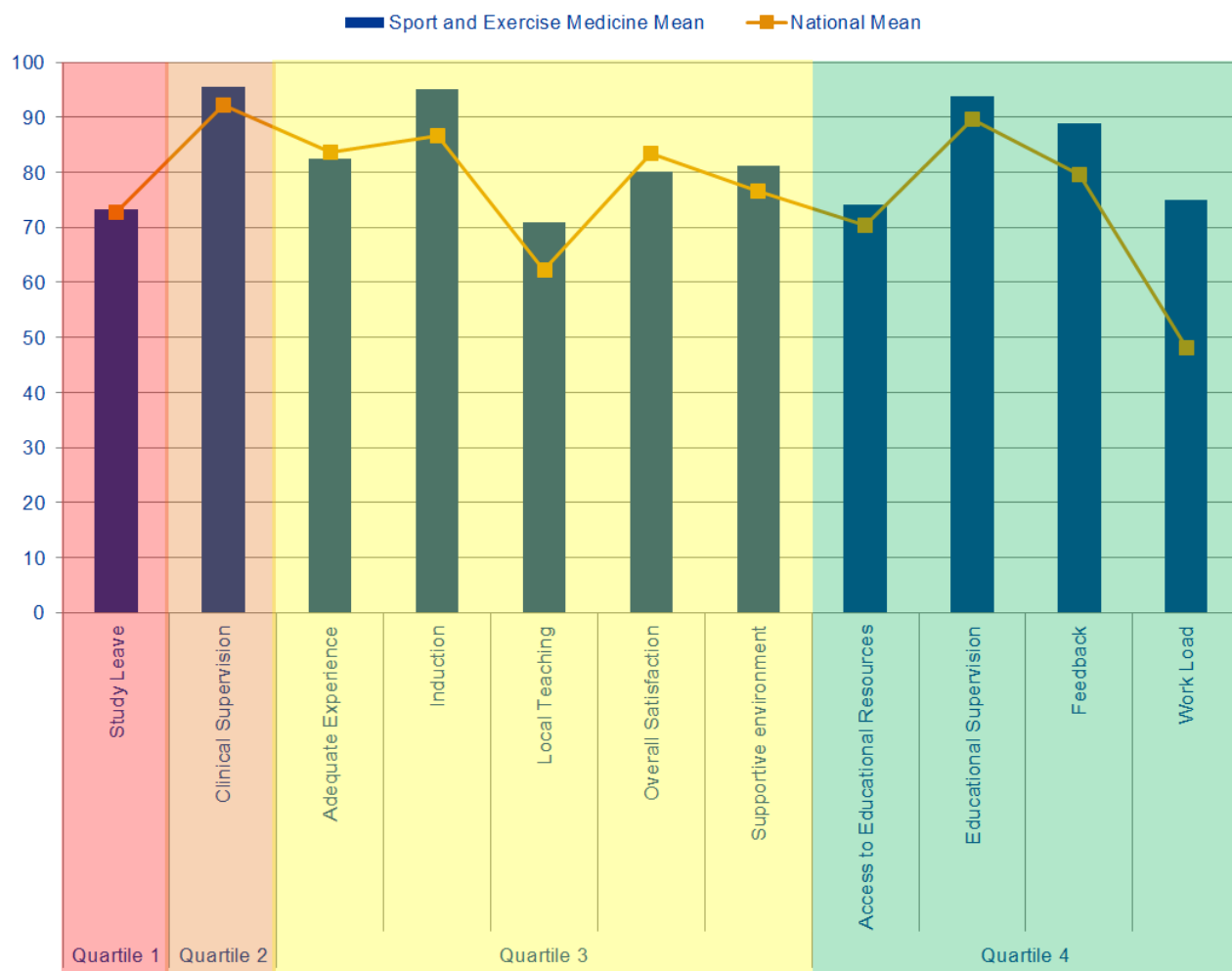
Overall Satisfaction Means



## Outlier Trends

		Patient Safety			Educational Development							Training Environment	GREEN OUTLIERS		RED OUTLIERS			2014 to 2015 CHANGE ↑ BETTER → STATUS QUO ↓ WORSE
Trusts																		
Southend																		
Total																		

## Indicator Means



Quartiles	Indicator	Sport and Exercise Medicine Mean	National Mean
Quartile 1	Study Leave	73.34	72.78
Quartile 2	Clinical Supervision	95.50	92.14
	Adequate Experience	82.50	83.60
	Induction	95.00	86.73
Quartile 3	Local Teaching	71.00	62.18
	Overall Satisfaction	80.00	83.49
	Supportive environment	81.25	76.57
	Access to Educational Resources	74.14	70.44
Quartile 4	Educational Supervision	93.75	89.55
	Feedback	88.89	79.53
	Work Load	75.00	48.09