

*Developing people
for health and
healthcare*

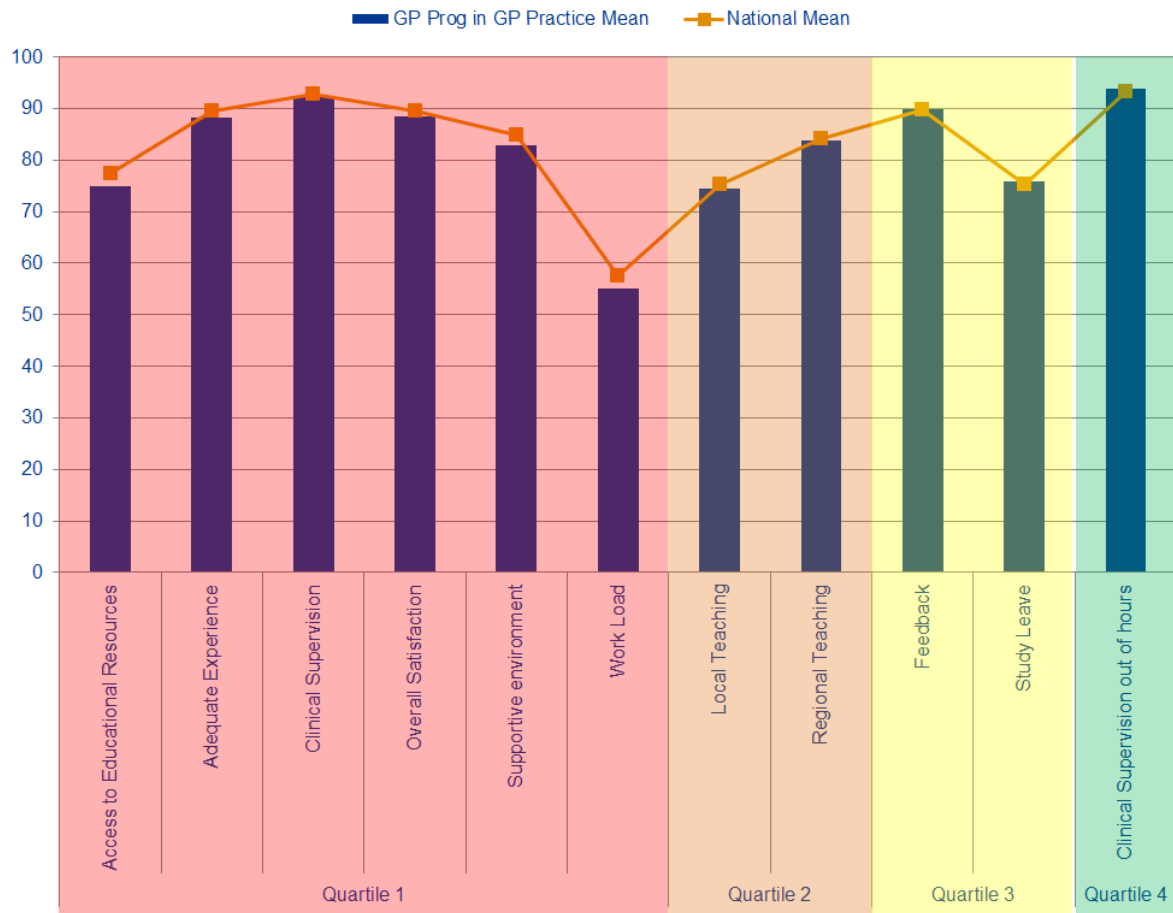
**Health Education East of England GMC National Training
Survey Analysis 2015: Programme Group Report**

School of General Practice



GP in GP Practice

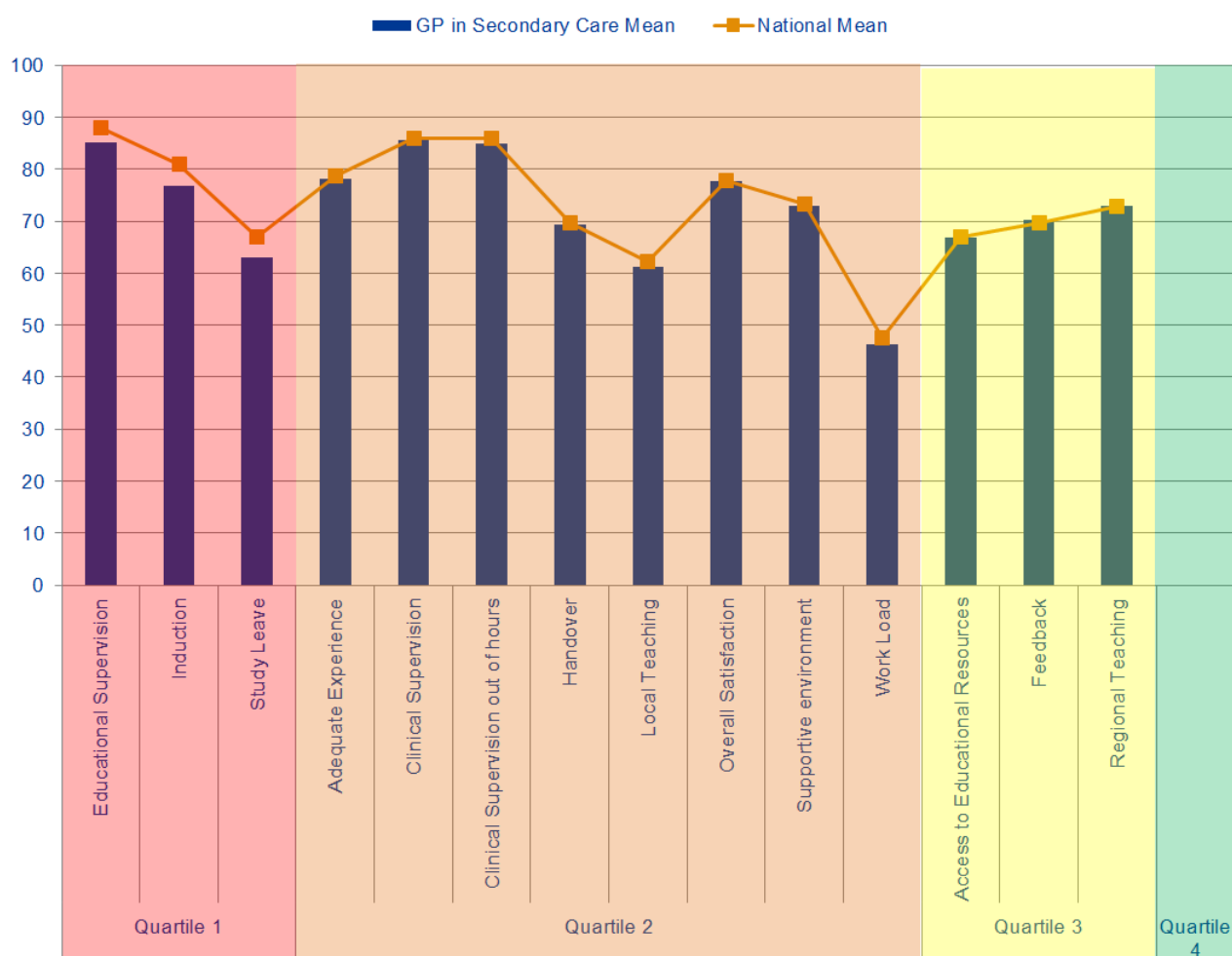
Indicator Means



Quartiles	Indicator	GP Prog in GP Practice Mean	National Mean
Quartile 1	Access to Educational Resources	75.01	77.33
	Adequate Experience	88.15	89.47
	Clinical Supervision	92.15	92.75
	Overall Satisfaction	88.47	89.50
	Supportive environment	82.79	84.78
	Work Load	54.96	57.46
Quartile 2	Local Teaching	74.40	75.26
	Regional Teaching	83.66	84.03
Quartile 3	Feedback	89.92	89.81
	Study Leave	75.90	75.28
Quartile 4	Clinical Supervision out of hours	93.89	93.16

GP in Secondary Care

Indicator Means



Quartiles	Indicator	GP in Secondary Care Mean	National Mean
Quartile 1	Educational Supervision	85.11	88.03
	Induction	76.71	80.91
	Study Leave	63.04	66.86
Quartile 2	Adequate Experience	78.03	78.68
	Clinical Supervision	85.61	85.99
	Clinical Supervision out of hours	84.80	85.87
	Handover	69.34	69.66
	Local Teaching	61.14	62.25
	Overall Satisfaction	77.72	77.89
	Supportive environment	73.01	73.20
Quartile 3	Work Load	46.27	47.52
	Access to Educational Resources	66.81	66.92
	Feedback	70.28	69.57
Quartile 4	Regional Teaching	72.91	72.84

GP in Secondary Care

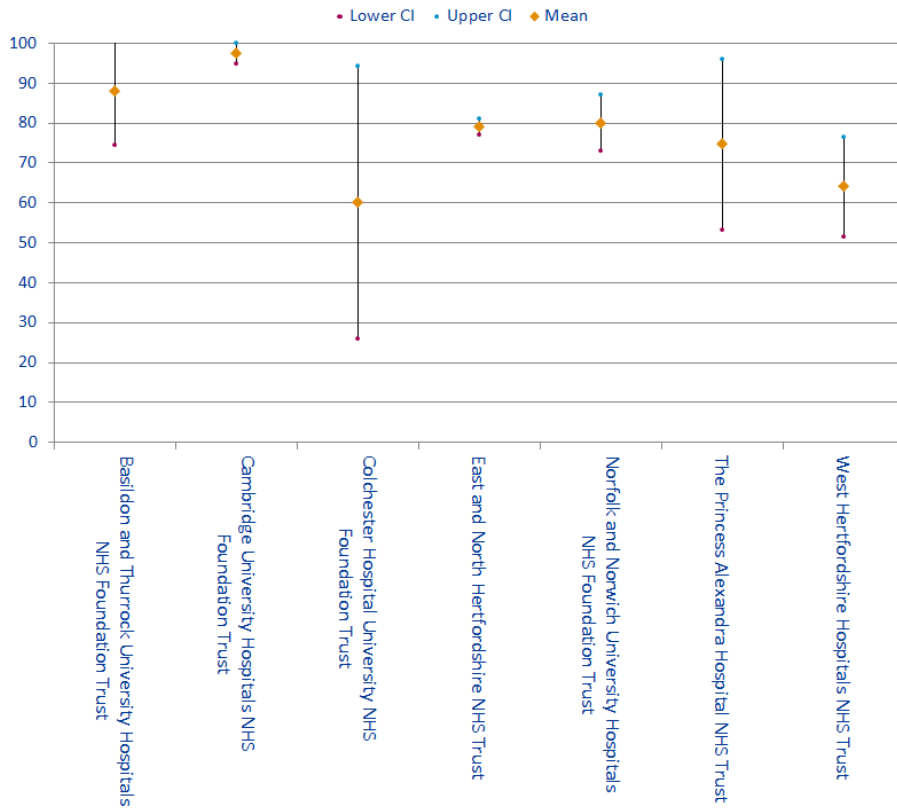
Outliers

	Trusts	Overall Satisfaction	Clinical Supervision out of hours	Handover	Induction	Adequate Experience	Supportive environment	Work Load	Access to Educational Resources	Feedback	Local Teaching	Regional Teaching	Study Leave
GP Prog - Emergency Medicine	Bedford Hospital NHS Trust												
	Cambridge University Hospitals NHS Foundation Trust	B				B	B	B	B		B		
	East and North Hertfordshire NHS Trust												B
	Hinchingbrooke Health Care NHS Trust										A		
	Mid Essex Hospital Services NHS Trust												
	Norfolk and Norwich University Hospitals NHS Foundation Trust			B									
	Peterborough and Stamford Hospitals NHS Foundation Trust				A			B			A		
	Southend University Hospital NHS Foundation Trust	A	A	A	A	A				A	A		
	The Princess Alexandra Hospital NHS Trust						A						
	West Hertfordshire Hospitals NHS Trust							B					B
GP Prog - Medicine	West Suffolk NHS Foundation Trust			B							A	B	B
	Bedford Hospital NHS Trust												
	Cambridge University Hospitals NHS Foundation Trust												
	Colchester Hospital University NHS Foundation Trust	B	B	B		B	B	B	B	B	B	B	B
	East and North Hertfordshire NHS Trust							B			B		
	Hinchingbrooke Health Care NHS Trust				A					A			
	Ipswich Hospital NHS Trust				B								
	Luton and Dunstable University Hospital NHS Foundation Trust				B			B			B	B	B
	Mid Essex Hospital Services NHS Trust				A			B			B		
	Norfolk and Norwich University Hospitals NHS Foundation Trust												
	Peterborough and Stamford Hospitals NHS Foundation Trust												
	Southend University Hospital NHS Foundation Trust												
	The Princess Alexandra Hospital NHS Trust	B	B	B	B	B	B	B	B	B	B		
The Queen Elizabeth Hospital, King's Lynn, NHS Foundation Trust	A								A				
West Hertfordshire Hospitals NHS Trust					A								
West Suffolk NHS Foundation Trust		A	A	A	A				A				
GP Prog - Obstetrics and Gynaecology	Basildon and Thurrock University Hospitals NHS Foundation Trust						A					A	
	Cambridge University Hospitals NHS Foundation Trust	B	B	B						B			
	Colchester Hospital University NHS Foundation Trust				A				B	B	B		
	East and North Hertfordshire NHS Trust				A								
	Hinchingbrooke Health Care NHS Trust	B				B	B						
	Ipswich Hospital NHS Trust								B				
	Norfolk and Norwich University Hospitals NHS Foundation Trust												
	Southend University Hospital NHS Foundation Trust				A	A						A	
	The Princess Alexandra Hospital NHS Trust												
	West Hertfordshire Hospitals NHS Trust	B	B									B	
GP Prog - Paediatrics and Child Health	Basildon and Thurrock University Hospitals NHS Foundation Trust												
	Colchester Hospital University NHS Foundation Trust			A			A						
	East and North Hertfordshire NHS Trust	A											B
	Ipswich Hospital NHS Trust	A	A	A						A			
	James Paget University Hospitals NHS Foundation Trust					A	A	A					
	Mid Essex Hospital Services NHS Trust												
	Norfolk and Norwich University Hospitals NHS Foundation Trust						B						
	Southend University Hospital NHS Foundation Trust												
	The Princess Alexandra Hospital NHS Trust							B					
West Hertfordshire Hospitals NHS Trust	A	A			A					A			
West Suffolk NHS Foundation Trust		A	A										
GP Prog - Psychiatry	Cambridgeshire and Peterborough NHS Foundation Trust	B	B					B					
	Hertfordshire Partnership University NHS Foundation Trust				B								
	Norfolk and Suffolk NHS Foundation Trust				B			A				A	
	North Essex Partnership University NHS Foundation Trust				B								
	South Essex Partnership University NHS Foundation Trust	B	B										A
GP Prog - Surgery	Bedford Hospital NHS Trust												
	James Paget University Hospitals NHS Foundation Trust												
	Luton and Dunstable University Hospital NHS Foundation Trust	B				B	B		B			B	
	Norfolk and Norwich University Hospitals NHS Foundation Trust								B				
	Southend University Hospital NHS Foundation Trust				A								
	The Princess Alexandra Hospital NHS Trust					B							
West Suffolk NHS Foundation Trust	B										B		

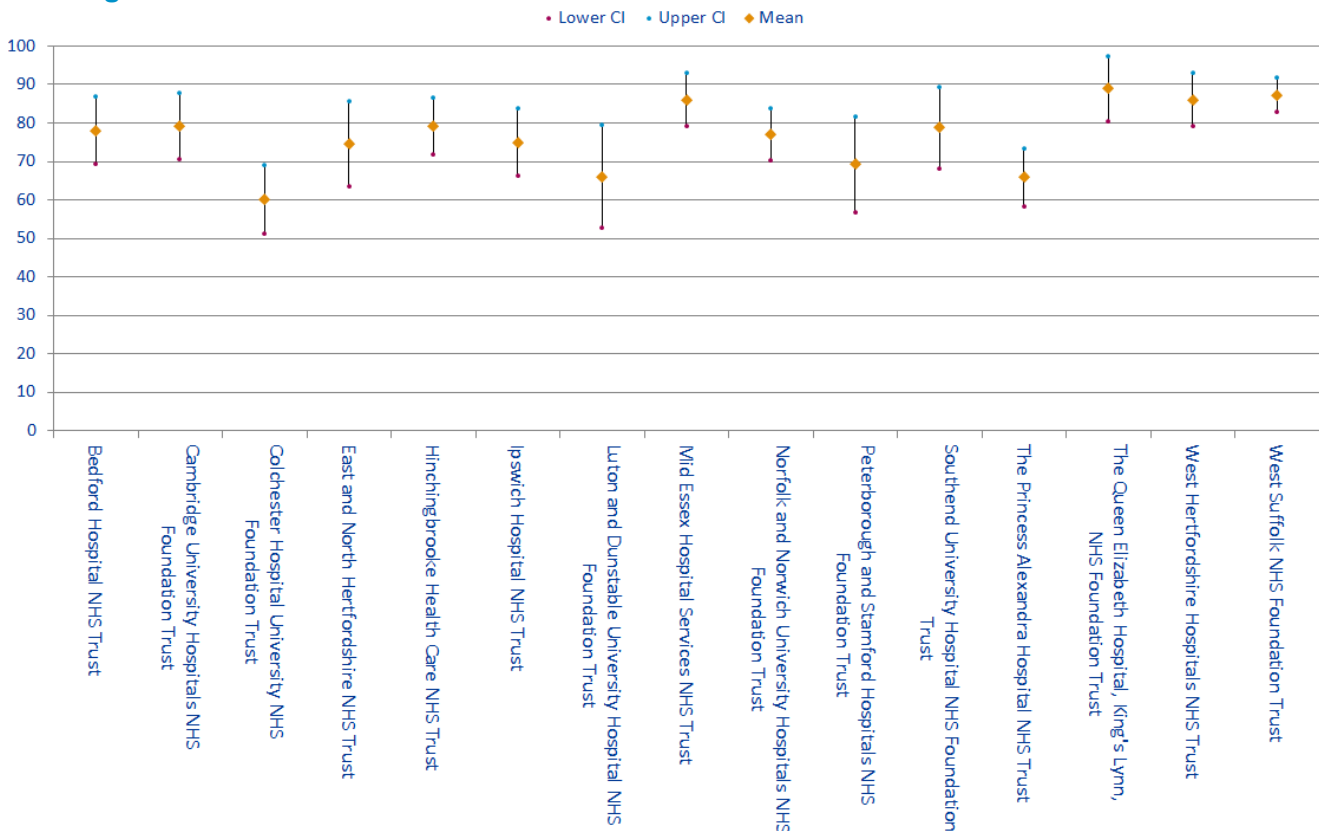
GP in Secondary Care

Overall Satisfaction Means

GP Programme —Emergency Medicine



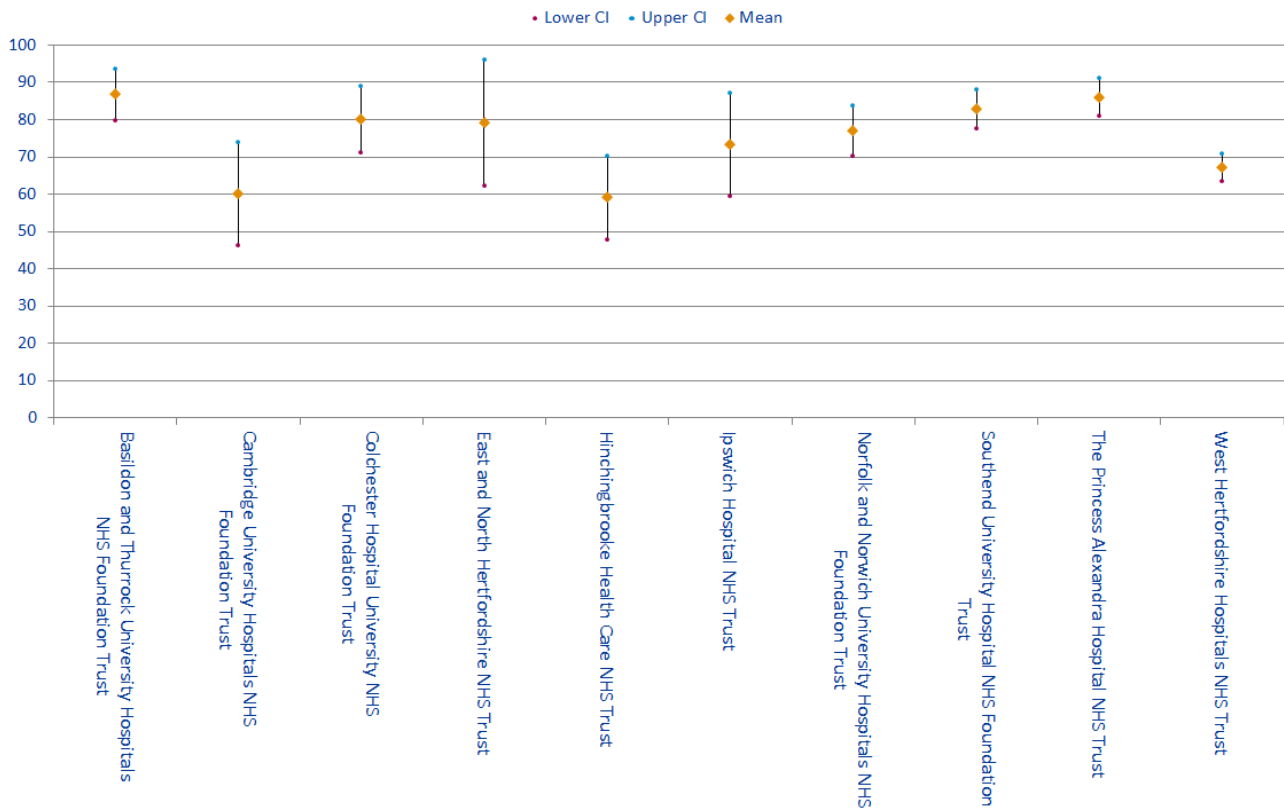
GP Programme —Medicine



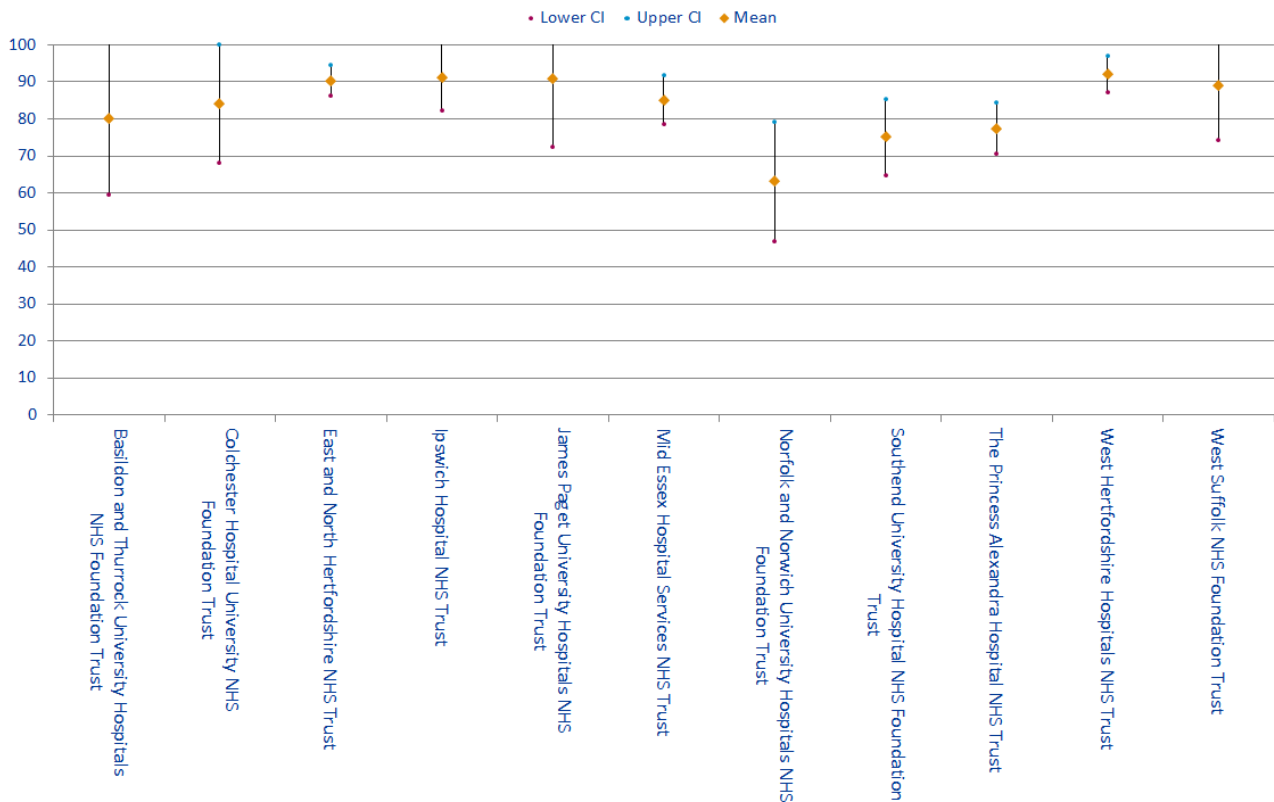
GP in Secondary Care

Overall Satisfaction Means

GP Programme — Obstetrics and Gynaecology



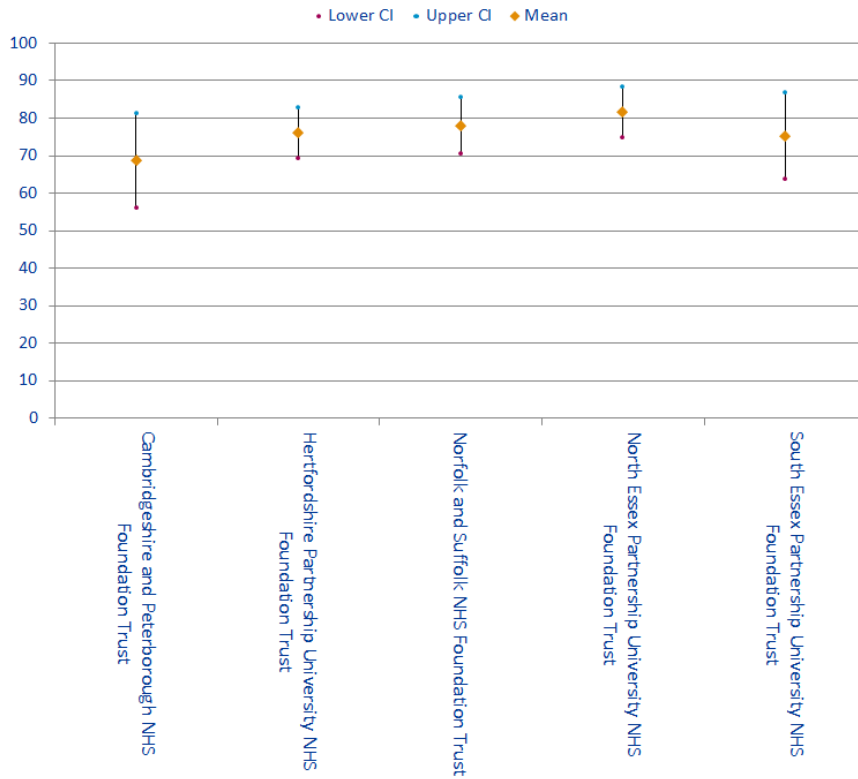
GP Programme — Paediatrics and Child Health



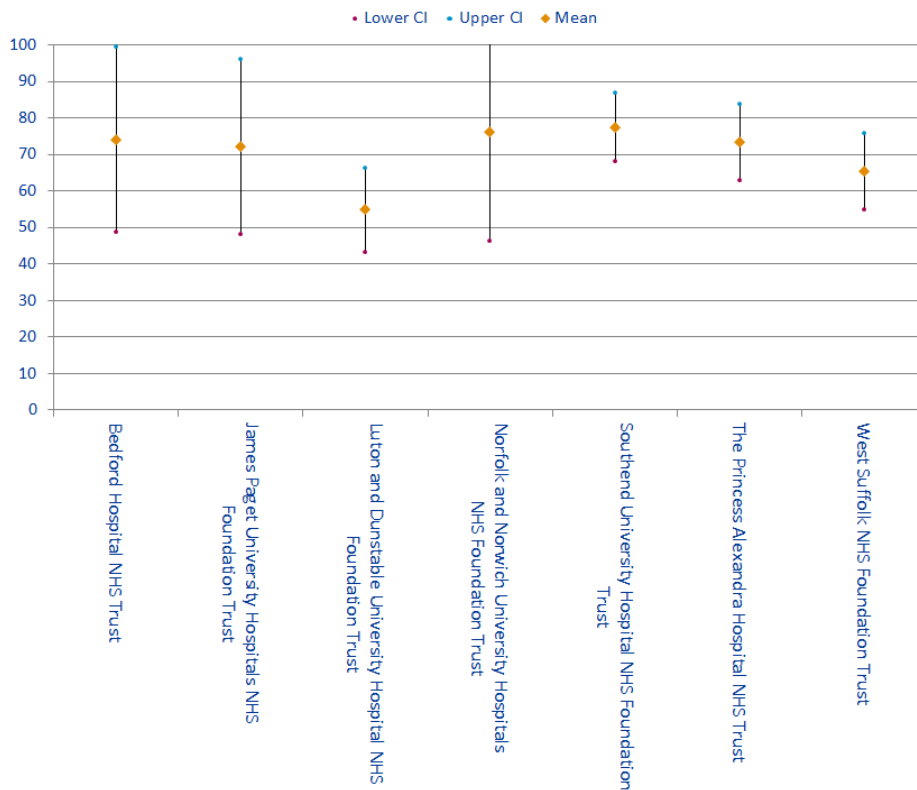
GP in Secondary Care

Overall Satisfaction Means

GP Programme — Psychiatry



GP Programme — Surgery



Outlier Trends

Trusts	Overall Satisfaction	Patient Safety			Educational Development					Training Environment	GREEN OUTLIERS			RED OUTLIERS			2014 to 2015 CHANGE ↑ BETTER → STATUS QUO ↓ WORSE			
		Clinical Supervision	Clinical Supervision out of hours	Handover	Induction	Work Load	Educational Supervision	Adequate Experience	Feedback	Local Teaching	Regional Teaching	Study Leave	Supportive environment	Access to Educational Resources	2013	2014		2015	2013	2014
Hinchingbrooke									2					1		1				
Mid Essex														1	1		1			
Southend																7	1			
Princess Alexandra																1				
Norfolk and Norwich				2											1		3	2	1	
Cambridge University															3					6
West Suffolk				3												1	1	1	3	
Peterborough and Stamford																				1
Luton And Dunstable									2						2	3	1		1	
East and North Herts														1	1					1
West Herts																				2
Bedford																			1	
Total														5	9	13	6	5	14	↑↓

Outlier Trends

Trusts	Patient Safety				Educational Development					Training Environment	GREEN OUTLIERS			RED OUTLIERS			2014 to 2015 CHANGE ↑ BETTER → STATUS QUO ↓ WORSE						
	Overall Satisfaction	Clinical Supervision	Clinical Supervision out of hours	Handover	Induction	Work Load	Educational Supervision	Adequate Experience	Feedback	Local Teaching	Regional Teaching	Study Leave	Supportive environment	Access to Educational Resources	2013	2014		2015	2013	2014	2015		
Colchester																					9		
Hinchingbrooke																	2				5		
Mid Essex						2									1		1		1		1		
Southend																							
Princess Alexandra					2	2									1						1	9	
Ipswich																1					1	1	
Norfolk and Norwich																					2		
Queen Elizabeth																	2				1	2	
Cambridge University																					2		
Peterborough and Stamford																1					1		
West Suffolk					3										2	1	5						
Luton And Dunstable						2				2											2	2	5
East and North Herts																						2	
West Herts																	1						
Bedford																					3		
Total															4	3	11	10	13	27		↑↓	

Outlier Trends

Trusts	Overall Satisfaction	Patient Safety			Educational Development					Training Environment	GREEN OUTLIERS			RED OUTLIERS			2014 to 2015 CHANGE ↑ BETTER → STATUS QUO ↓ WORSE		
		Clinical Supervision out of hours	Handover	Induction	Work Load	Educational Supervision	Adequate Experience	Feedback	Local Teaching	Regional Teaching	Study Leave	Supportive environment	Access to Educational Resources	2013	2014	2015		2013	2014
Basildon and Thurrock													1		2				
Colchester			2											1	1				3
Hinchingbrooke															3				3
Southend													1	1	3			2	
Princess Alexandra													1				1	1	
Ipswich							2										7		1
Norfolk and Norwich													2						
Cambridge University																		2	4
East and North Herts				3									1	1	1				
West Herts																	1		3
Total													6	6	7	9	5	14	↑ ↓

Outlier Trends

Trusts	Overall Satisfaction	Patient Safety			Educational Development						Training Environment	GREEN OUTLIERS			RED OUTLIERS			2014 to 2015 CHANGE ↑ BETTER → STATUS QUO ↓ WORSE	
		Clinical Supervision out of hours	Handover	Induction	Work Load	Educational Supervision	Adequate Experience	Feedback	Local Teaching	Regional Teaching	Study Leave	Supportive environment	Access to Educational Resources	2013	2014	2015	2013		2014
Basildon and Thurrock													1				1		
Colchester															2		1		
Mid Essex													2						
Southend														2		1			
Princess Alexandra					3												2	3	1
West Suffolk														2	2	1	1		
Ipswich											2		1		4				
James Paget																3			
Norfolk and Norwich														2			1	1	
East and North Herts															1		4	1	
West Herts	2					2								3	4				
Total													4	9	16	4	11	3	↑↑

Outlier Trends

Trusts	Overall Satisfaction	Patient Safety					Educational Development					Training Environment	GREEN OUTLIERS			RED OUTLIERS			2014 to 2015 CHANGE ↑ BETTER → STATUS QUO ↓ WORSE		
		Clinical Supervision	Clinical Supervision out of hours	Handover	Induction	Work Load	Educational Supervision	Adequate Experience	Feedback	Local Teaching	Regional Teaching	Study Leave	Supportive environment	Access to Educational Resources	2013	2014	2015	2013		2014	2015
North Essex			3																1	1	
South Essex														2		1	2			2	
Norfolk and Suffolk			3			3								2	1	1	1	1	1	1	
Cambridge shire and Peterborough															2		1	1	1	3	
Herts Parts			2											1	2			1	1	1	
Total														5	5	2	4	4	8		↓ ↓

Outlier Trends

Trusts	Overall Satisfaction	Patient Safety			Educational Development					Training Environment	GREEN OUTLIERS			RED OUTLIERS			2014 to 2015 CHANGE ↑ BETTER → STATUS QUO ↓ WORSE			
		Clinical Supervision	Clinical Supervision out of hours	Handover	Induction	Work Load	Educational Supervision	Adequate Experience	Feedback	Local Teaching	Regional Teaching	Study Leave	Supportive environment	Access to Educational Resources	2013	2014		2015	2013	2014
Southend																1				
Princess Alexandra					2									1			3		1	
James Paget															2					
West Suffolk																			2	
Norfolk and Norwich						2								1			3		1	
Luton And Dunstable		3				3	3		3								6	9	5	
Bedford															5					
Total														2	7	1	9	12	9	↓ ↑