

## A Day in an Emergency Medical Unit

October 16<sup>th</sup> 2018 and March 19<sup>th</sup> 2019

Health Research Building, College Lane Campus Hatfield AL10 9AB



One day courses designed to refresh skills in a simulated EMU.  
You will see a wide range of acute cases at multiple clinical stations.

This course is designed to support trainees from any medical specialty,  
ACCS or GP STs to return to clinical practice with confidence.

To book into one of these training days please email:

[admin.SPGM@herts.ac.uk](mailto:admin.SPGM@herts.ac.uk) with your

- Name
- Job role
- Mobile telephone number
- Which date you would like to attend.

TIME	AREA 1	AREA 2	AREA 3	AREA 4	AREA 5	AREA 6	AREA 7	AREA 8	AREA 9	AREA 10
10.00-10.30										
10.30-11.00										
<b>11.00-11.15</b>										
11.15-11.45										
11.45-12.15										
12.15-12.45										
<b>12.45-13.30</b>										
13.30-14.00										
14.00-14.30										
14.30-15.00										
<b>15.00-15.15</b>										
15.15-15.45										
15.45-16.15										

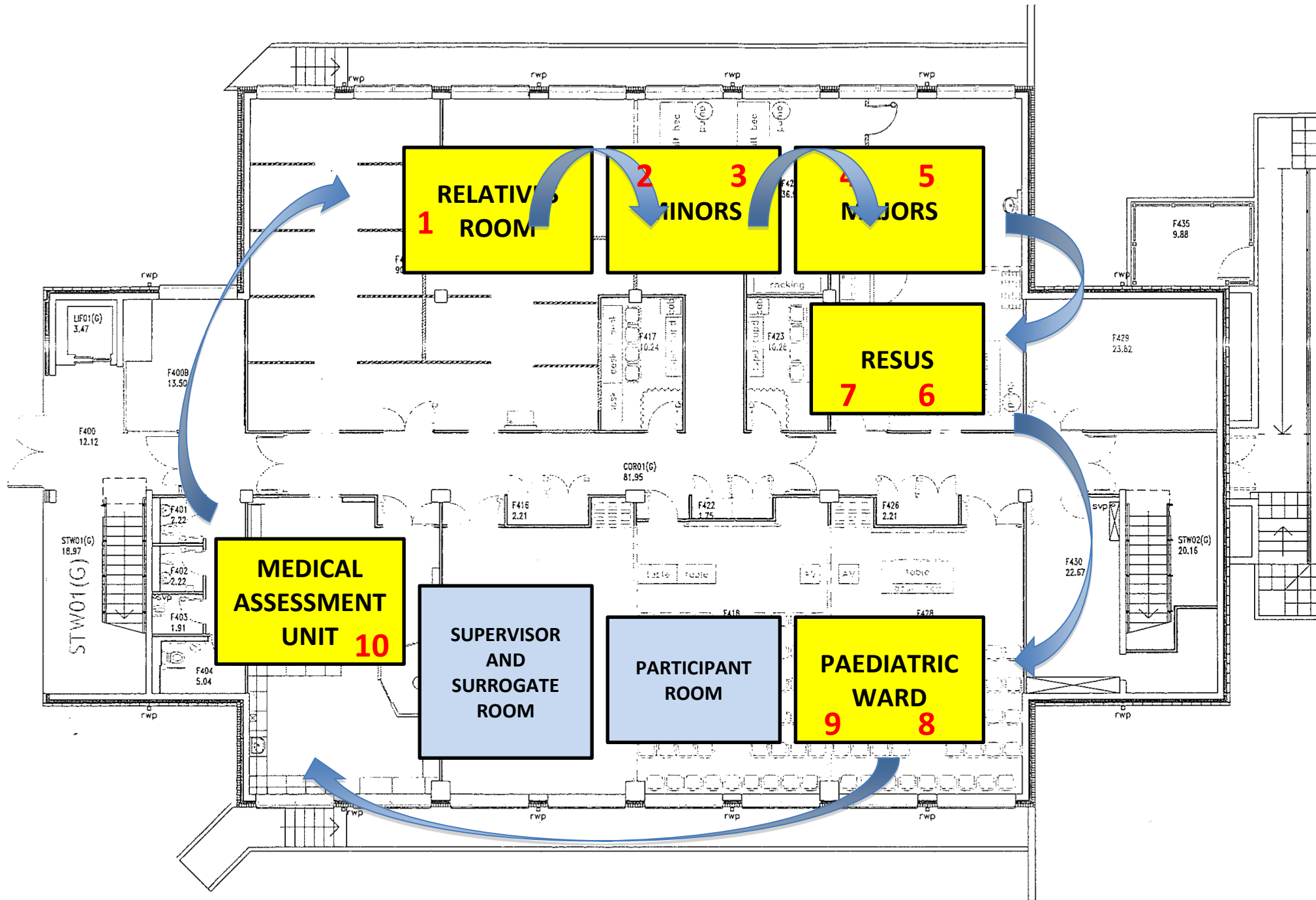
AREA	SURROGATE (AM)	SURROGATE (PM)
1	Sue Smith	Sue Smith
2	Patricia Clark	Patricia Clark
3	Andy Cremer	Andy Cremer
4	Diana Rowsell	Charles Orme
5	MANNEQUIN	MANNEQUIN
6	Paul Craddock	Paul Craddock
7	Mannequin	Mannequin
8	Nerida Cremer	Nerida Cremer
9	Holly Anderson	Holly Anderson
10	Diana Rhodes	Diana Rhodes

SUPERVISOR (AM)	SUPERVISOR (PM)
Yasmin Khatib	Yasmin Khatib
Lucy-Anne Frank	Lucy Anne Frank
Kavita Dave	Kavita Dave
Dr Stella George	Dr Stella George
Ken Spearpoint	Ken Spearpoint
Dr Naziat	Dr Naziat
Dr Katie Marshall	Dr Katie Marshall
Maureen Brennan	Maureen Brennan
Dr Ian Barrison	Dr Ian Barrison
Dr Lauren Steel	Dr Lauren Steel

OUTLINE	OTHER STAFF
Breaking bad news	
Calf pain	
Headache	
LOC	
Upper GI bleed	Relatives x 2 ,Nurse: Sandra Harwood ,Tracy Lavelle
Palpitations	
Asthma in pregnancy	Anthony Stevens (charge nurse)Steve Furnell
Penicillin allergy	
Pyelonephritis	
Painful joints	

Observers:

Technical: Krishna Ruparelia, Colin Harwood



<b>RELATIVES ROOM</b>	
Room in centre	F419 (Community room)
<b>STATION 1</b>	
Outline	<b>BREAKING BAD NEWS</b>
Surrogate	Sue Smith
Supervisor	Yasmin Khatib
Equipment	Door sign 'relatives room', sign 'station 1', box of tissues, pen and paper for supervisor, clock/watch (no timer screen in room)
Notes	This is an emotionally challenging simulation, to ensure surrogates) have a full debrief and support after sessions

<b>MINORS</b>	
Room in centre	F421a (directly next to Community room)
<b>STATION 2</b>	
Outline	<b>CALF PAIN</b>
Surrogate	Patricia Clark
Supervisor	Dr Lucy Anne Frank
Equipment	Door sign 'minors', sign 'station 2', wheel chair for surrogate, chair and pen and paper for supervisor
Notes	See scenario outline (no other equipment needed)
<b>STATION 3</b>	
Outline	<b>HEADACHE</b>
Surrogate	Andy Cremer
Supervisor	Dr Kavita Dave
Equipment	Door sign 'minors', sign 'station 3', bed for surrogate, chair and pen and paper for supervisor
Notes	See scenario outline (no other equipment needed)

<b>MAJORS</b>	
Room in centre	F421b (room between F421a and F425)
<b>STATION 4</b>	
Outline	<b>LOSS OF CONSCIOUSNESS</b>
Surrogate	Diana Rowsell amCharles Orme PM
Supervisor	<b>Dr Stella George</b>
Equipment	Door sign 'majors', sign 'station 4', bed for surrogate, chair and pen and paper for supervisor
Notes	See scenario outline (no other equipment needed)
<b>STATION 5</b>	
Outline	<b>UPPER GI BLEED</b>

<b>Surrogate</b>	Mannequin
<b>Supervisor</b>	Ken Spearpoint
<b>Equipment</b>	Door sign 'majors', sign 'station 5', bed for surrogate, chair and pen and paper for supervisor, <i>hi fidelity mannequin, IV line, lab values, images, PRBC (see scenario for list)</i>
<b>Notes</b>	Sandra Harwood as 'help' at this station, e (AM) / Madeleine Flanagan as concerned relative (PM)? <b>Will need another 'relative'</b>

<b>RESUS</b>	
<b>Room in centre</b>	F425 (opens onto corridor)
<b>STATION 6</b>	
<b>Outline</b>	<b>PALPITATIONS</b>
<b>Surrogate</b>	Paul Craddock
<b>Supervisor</b>	<b>Dr Naziat</b>
<b>Equipment</b>	Door sign 'resus', sign 'station 6', bed for surrogate, chair and pen and paper for supervisor
<b>Notes</b>	<i>No equipment mentioned in scenario but need ? 12 lead, bloods etc.</i>
<b>STATION 7</b>	
<b>Outline</b>	<b>ASTHMA EXACERBATION IN PREGNANCY</b>
<b>Surrogate</b>	Pregnant hi fidelity mannequin
<b>Supervisor</b>	Dr Katie Marshall
<b>Equipment</b>	Door sign 'resus', sign 'station 7', chair and pen and paper for supervisor, <i>hi fi pregnancy mannequin, IV line, code blue cart, lab values, images (see scenario for list)</i>
<b>Notes</b>	Anthony Stevens as charge nurse at this station

<b>WARD</b>	
<b>Room in centre</b>	F428 (classroom opposite resus)
<b>STATION 8</b>	
<b>Outline</b>	<b>PENICILLIN ALLERGY</b>
<b>Surrogate</b>	Nerida Cremer
<b>Supervisor</b>	Maureen Brennan
<b>Equipment</b>	Door sign 'station 8', chair and pen and paper for supervisor, dividing walls to separate the two scenarios
<b>Notes</b>	<i>No equipment mentioned in scenario</i>
<b>STATION 9</b>	
<b>Outline</b>	<b>PYELONEPHRITIS</b>
<b>Surrogate</b>	Holly Anderson
<b>Supervisor</b>	Dr Ian Barrison
<b>Equipment</b>	Door sign 'ward', sign 'station 9', chair and pen and paper for supervisor
<b>Notes</b>	<i>No equipment mentioned in scenario</i>

<b>MAU / PHARMACY</b>	
<b>Room in centre</b>	F410 (pharmacy)
<b>STATION 10</b>	
<b>Outline</b>	<b>PAINFUL JOINTS</b>
<b>Surrogate</b>	Diana Rhodes
<b>Supervisor</b>	<b>Dr Lauren Steel</b>
<b>Equipment</b>	Door sign 'mau/pharmacy, sign 'station 10', chair for surrogate, chair and pen and paper for supervisor
<b>Notes</b>	<i>No equipment mentioned in scenario</i>

<b>PARTICIPANT ROOM</b>	
<b>Room in centre</b>	F414 (directly next to pharmacy)
<b>Equipment</b>	Door sign 'candidate room' Blue dividing board with: <ul style="list-style-type: none"> <li>• General day outline/information</li> <li>• Scenario outlines (1 to 10)</li> <li>• Day programme (who is where at what time).</li> </ul>

<b>SURROGATE ROOM</b>	
<b>Room in centre</b>	F418 (in between 'ward' and candidate room)
<b>Equipment</b>	Door sign 'surrogate and supervisor room, no entry for candidates' <ul style="list-style-type: none"> <li>• General day outline/information</li> <li>• <b>FULL</b> scenario outlines (1 to 10)</li> <li>• Day programme (who is where at what time)</li> <li>• Refreshments.</li> </ul>