

*Developing people
for health and
healthcare*

Health Education East of England GMC National
Training Survey Analysis 2015: Trust Report

**Peterborough and
Stamford Hospitals
NHS Foundation trust**

Narrative

Trust Indicators

The dashboard for the Peterborough and Stamford Hospitals NHS Foundation Trust illustrates where it stands relative to the national mean and the other trusts nationally participating in the National Training Survey (NTS). Twelve of the 14 indicators lie in the first quartile, none in the second, one in the third and one in the fourth quartile.

The chart illustrating the means by indicator from 2012 to 2015 shows the indicators staying quite level. Peterborough and Stamford's Means by Indicator chart for 2014 and 2015 compared to the 2015 national mean illustrates that about half the indicators are up from last time although almost all of them are below the national mean.

Programme Group Indicators

The chart for Overall Satisfaction for each programme group illustrates where Peterborough and Stamford's programme groups lie relative to each programme group's national mean. The quartiles were calculated for each programme group using the means of each trust participating in the NTS that runs that particular programme group. Peterborough and Stamford has seven programme groups in the first quartile, five in the second, two in the third quartile and four in the fourth quartile. Peterborough and Stamford is in the bottom 25% of trusts which run the programme groups in quartile one while it is in the top 25% of trusts which run each of the programme groups which lie in quartile four.

Outliers

The outliers by programme group and level show which areas are above (green/A) and below (red/B) outliers. A programme group is an outlier if it is in the top or bottom of the GMC calculated quartiles and the confidence intervals do not overlap those of the national mean.

ACCS, Anaesthetics and Core Anaesthetics have the most negative outliers with three each. The GP Programme for Emergency Medicine and Obstetrics and Gynaecology have the most positive outliers with two.

The chart of net programme group outliers for 2012-2015 illustrates the net outliers for each programme group by trust, with positive outliers getting value +1 and negative outliers getting value -1. Peterborough and Stamford had a net outlier value of 11 in 2012, 3 in 2013, -6 in 2014 and -7 in 2015.

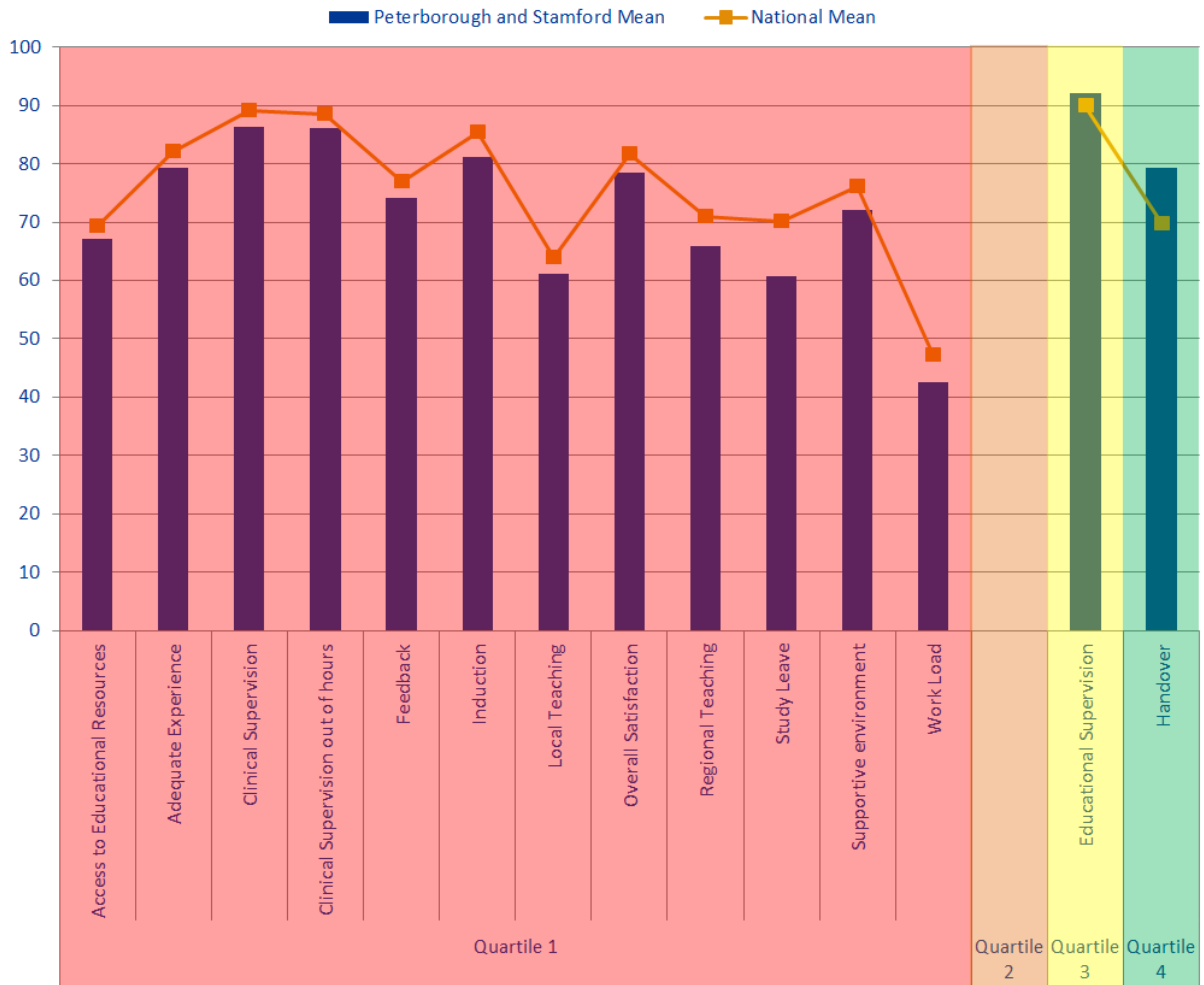
Rankings

The rankings chart shows where Peterborough and Stamford comes in comparison to the other trusts delivering each of its programme groups for Overall Satisfaction. The graph is calculated by dividing by the total number of trusts who reported information for that programme group in order to be able to directly compare each programme group, no matter how many trusts deliver it. Peterborough and Stamford has two programme groups which have remained in the bottom quartile for the last 3 years, Anaesthetics and CMT. Trauma and Orthopaedic Surgery has remained in the top half for the last three years and from 2013 to 2015 Surgery F2 has moved from the bottom quartile to the top quartile.

Patient Safety Concerns

Peterborough and Stamford has nine patient safety concerns, including two in understaffing and two in patient care provided. Peterborough and Stamford is in the upper range for concerns per bed and this is up from 2013 and 2014.

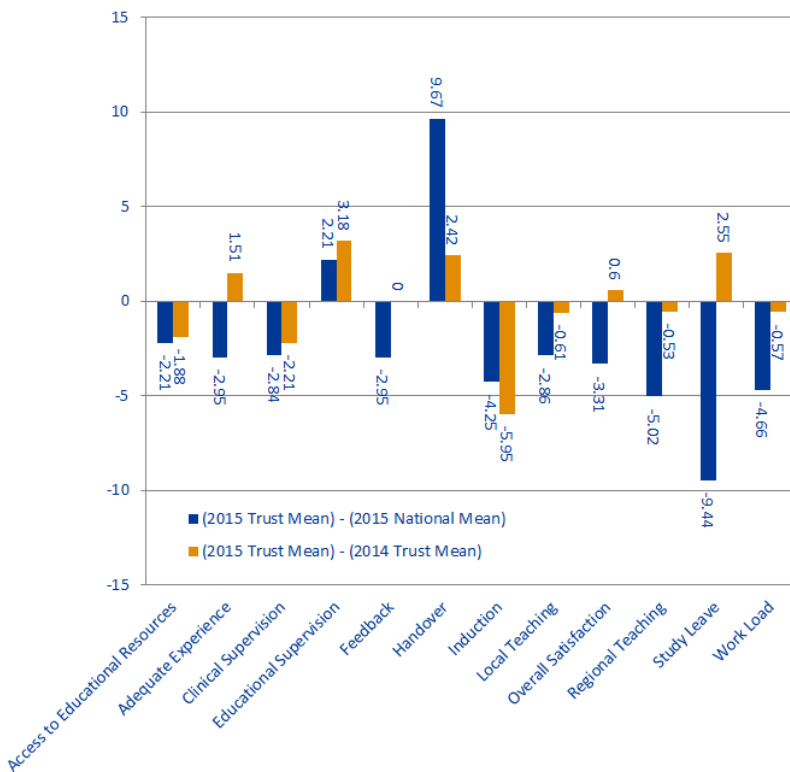
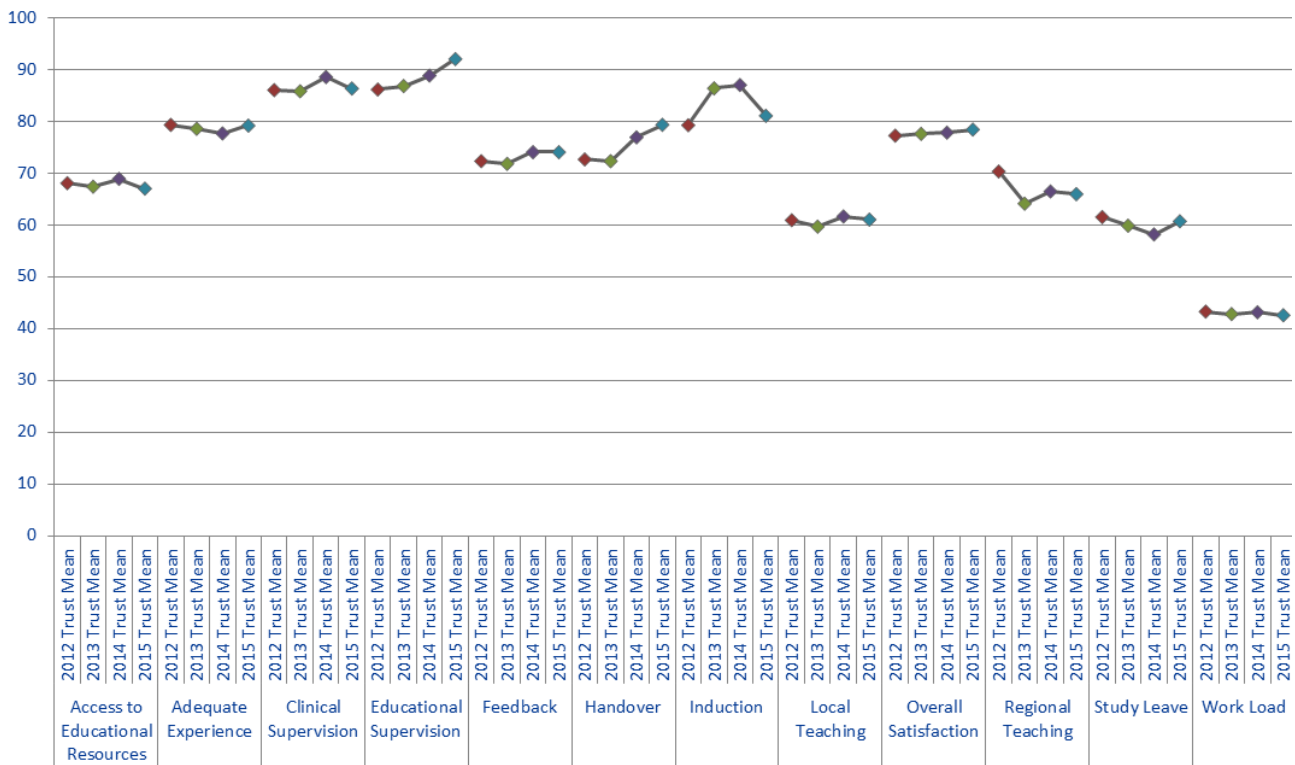
Dashboard



Quartile	Indicator	Peterborough and Stamford Mean	National Mean
Quartile 1	Access to Educational Resources	67.03	69.24
	Adequate Experience	79.19	82.14
	Clinical Supervision	86.35	89.19
	Clinical Supervision out of hours	86.17	88.44
	Feedback	74.06	77.01
	Induction	81.08	85.33
	Local Teaching	61.04	63.9
	Overall Satisfaction	78.43	81.74
	Regional Teaching	65.96	70.98
	Study Leave	60.73	70.17
	Supportive environment	72.03	76.14
	Work Load	42.59	47.25
Quartile 2			
Quartile 3	Educational Supervision	92.03	89.82
Quartile 4	Handover	79.34	69.67

The quartiles are calculated from the means for every trust that participated in the National Training Survey (NTS). The quartiles for each indicator are calculated separately. Therefore if a trust's indicator fell within the first quartile, then this means that the trust fell within the bottom 25% of trusts for that indicator. If a trust fell within the fourth quartile, then this means that the trust fell within the top 25% of trusts for that indicator.

Trend Data



Indicator	2015 National Mean	2015 Trust Mean	2014 Trust Mean	(2015 Trust Mean) - (2015 National Mean)	(2015 Trust Mean) - (2014 Trust Mean)
Access to Educational Resources	69.24	67.03	68.91	-2.21	-1.88
Adequate Experience	82.14	79.19	77.68	-2.95	1.51
Clinical Supervision	89.19	86.35	88.56	-2.84	-2.21
Educational Supervision	89.82	92.03	88.85	2.21	3.18
Feedback	77.01	74.06	74.06	-2.95	0
Handover	69.67	79.34	76.92	9.67	2.42
Induction	85.33	81.08	87.03	-4.25	-5.95
Local Teaching	63.9	61.04	61.65	-2.86	-0.61
Overall Satisfaction	81.74	78.43	77.83	-3.31	0.6
Regional Teaching	70.98	65.96	66.49	-5.02	-0.53
Study Leave	70.17	60.73	58.18	-9.44	2.55
Work Load	47.25	42.59	43.16	-4.66	-0.57

2015 trust mean lies above the national mean, but is below last year's trust mean

2015 trust mean lies above both the national mean and last year's trust mean

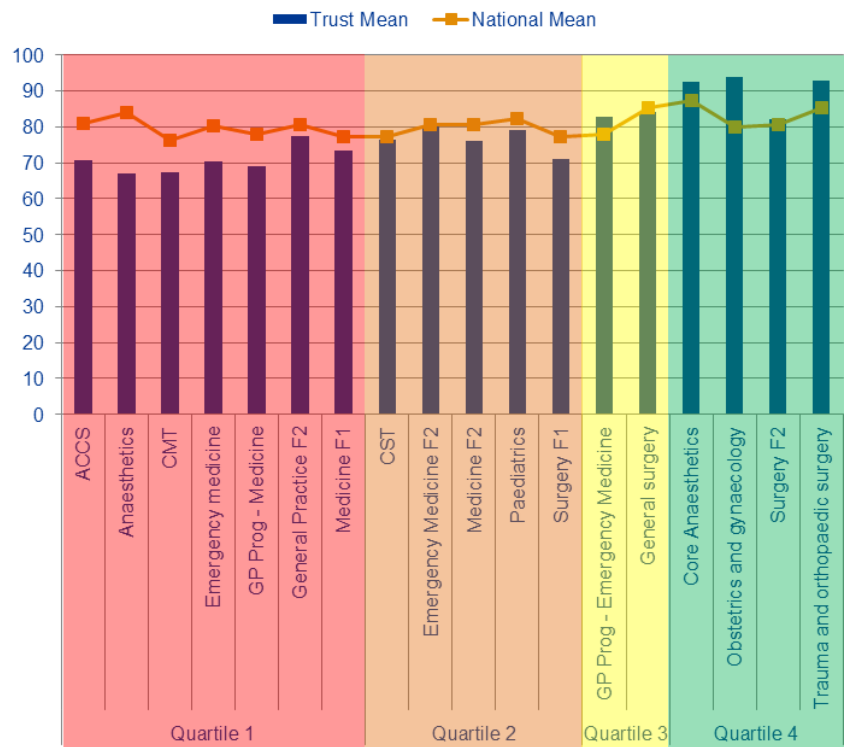
2015 trust mean lies below the national mean but above last year's trust mean

2015 trust mean lies below both the national mean and last year's trust mean

Overall Satisfaction by Programme Group

Programme Groups by Quartile

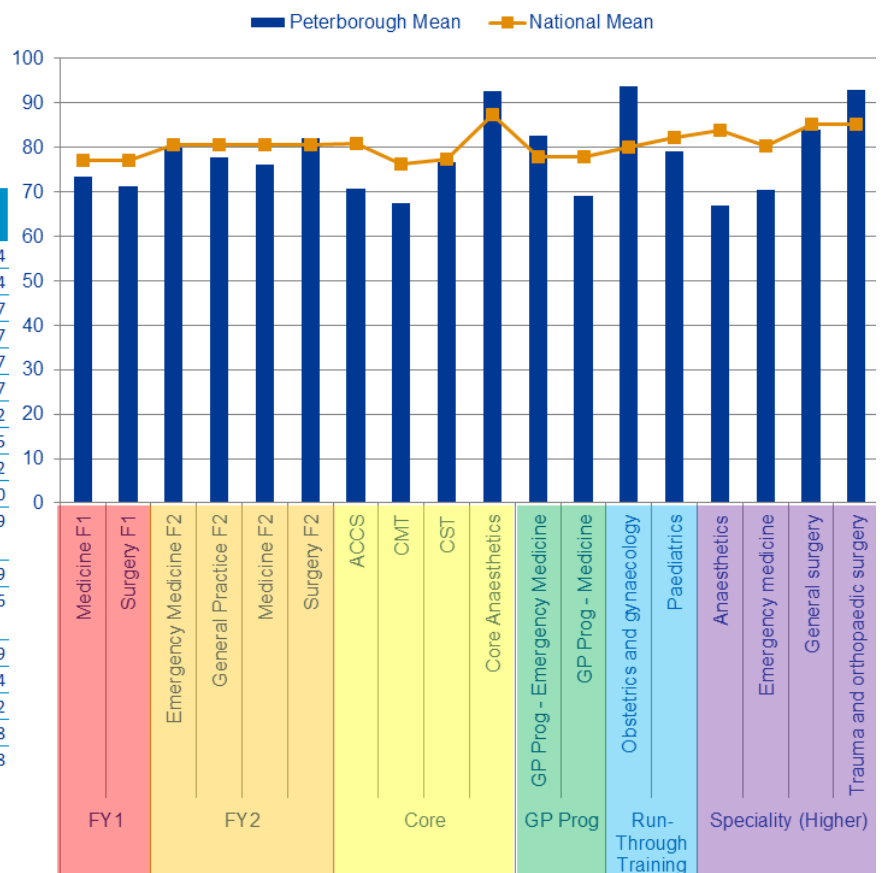
Quartiles	Programme Group	Trust Mean	National Mean
Quartile 1	ACCS	70.82	80.82
	Anaesthetics	67.00	83.94
	CMT	67.43	76.35
	Emergency medicine	70.40	80.32
	GP Prog - Medicine	69.14	77.89
	General Practice F2	77.60	80.57
	Medicine F1	73.45	77.14
Quartile 2	CST	76.57	77.42
	Emergency Medicine F2	80.00	80.57
	Medicine F2	76.00	80.57
	Paediatrics	79.20	82.29
Quartile 3	Surgery F1	71.11	77.14
	GP Prog - Emergency Medicine	82.67	77.89
	General surgery	84.00	85.18
Quartile 4	Core Anaesthetics	92.67	87.40
	Obstetrics and gynaecology	93.78	79.96
	Surgery F2	82.00	80.57
	Trauma and orthopaedic surgery	92.80	85.18



Quartiles are calculated from the means for every trust that ran that programme group. The quartiles for each programme group are calculated separately. Therefore if a trust's speciality falls into the first quartile this means this speciality had an overall satisfaction mean that fell within the bottom 25% of trusts in the UK running this speciality.

Programme Groups by Level

Level	Programme Group	Peterborough Mean	National Mean
FY1	Medicine F1	73.45	77.14
	Surgery F1	71.11	77.14
FY2	Emergency Medicine F2	80.00	80.57
	General Practice F2	77.60	80.57
	Medicine F2	76.00	80.57
Core	Surgery F2	82.00	80.57
	ACCS	70.82	80.82
	CMT	67.43	76.35
	CST	76.57	77.42
	Core Anaesthetics	92.67	87.40
GP Prog	GP Prog - Emergency Medicine	82.67	77.89
	GP Prog - Medicine	69.14	77.89
Run-Through Training	Obstetrics and gynaecology	93.78	79.96
	Paediatrics	79.20	82.29
Speciality (Higher)	Anaesthetics	67.00	83.94
	Emergency medicine	70.40	80.32
	General surgery	84.00	85.18
	Trauma and orthopaedic surgery	92.80	85.18



Programme Group Outliers

A Above Outlier
B Below Outlier

Programme Groups	Overall Satisfaction	Patient Safety					Educational Development						Training Environment	Access to Educational Resources			
		Clinical Supervision	Clinical Supervision Out of Hours	Induction	Handover	Work Load	Education Supervision	Adequate Experience	Feedback	Local Teaching	Regional Teaching	Supportive Environment			Study Leave		
2015	ACCS	B															
	Anaesthetics	B	B			A				B							
	CMT																
	CST																
	Core Anaesthetics			B								B				B	
	Emergency Medicine F2																
	Emergency medicine																
	GP Prog - Emergency Medicine					A											
	GP Prog - Medicine																
	General Practice F2																
	General surgery					B											
	Medicine F1			B		B											
	Medicine F2																
	Obstetrics and gynaecology	A															
	Paediatrics																
	Surgery F1																
	Surgery F2																
	Trauma and orthopaedic surgery																
2014	CMT																
	Core Anaesthetics																
	Emergency medicine																
	Emergency Medicine F2																
	General surgery	B															
	GP Prog - Medicine																
	Medicine F2																
	Obstetrics and gynaecology																
	Otolaryngology	B															
	Surgery F1																
	Surgery F2	B	B														
2013	ACCS																
	Anaesthetics																
	CMT																
	Core Anaesthetics																
	GP Prog - Medicine																
	General Practice F2	A															
	General surgery																
	Obstetrics and gynaecology																
	Otolaryngology																
	Trauma and orthopaedic surgery																

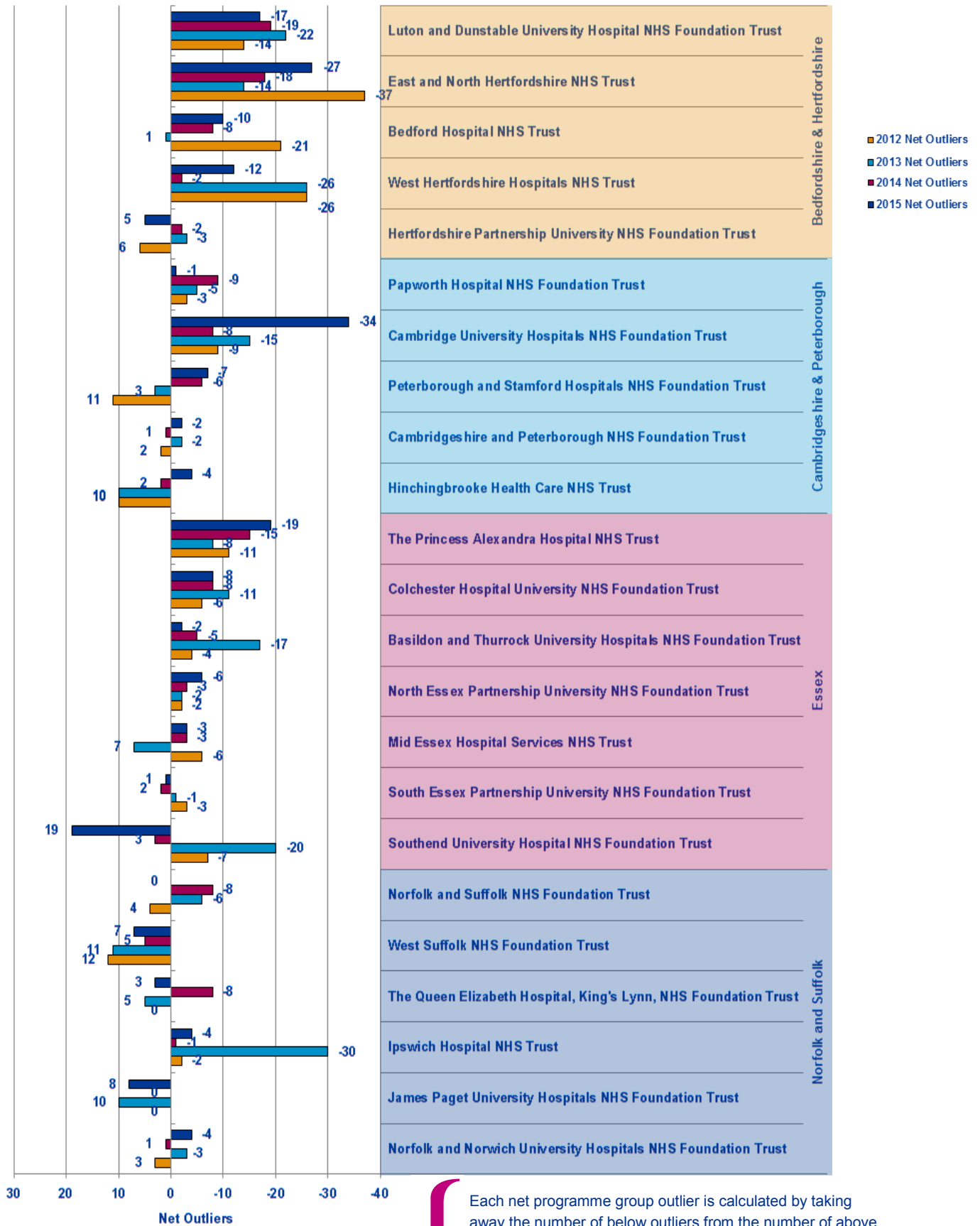
Programme Groups	Overall Satisfaction	Clinical Supervision out of hours	Handover	Induction	Work Load	Adequate Experience	Feedback	Local Teaching	Regional Teaching	Study Leave	Supportive environment	Access to Educational Resources	Training Environment/ Infrastructure	2014 to 2015 CHANGE			
														GREEN OUTLIERS	RED OUTLIERS	STATUS	
ACCS																	
Anaesthetics																	
CMT																	
CST																	
Core Anaesthetics																	
Emergency Medicine F2																	
Emergency medicine																	
GP Prog - Emergency Medicine																	
GP Prog - Medicine																	
General Practice F2																	
General surgery																	
Medicine F1																	
Medicine F2																	
Obstetrics and gynaecology																	
Paediatrics																	
Surgery F1																	
Surgery F2																	
Trauma and orthopaedic surgery																	
Total																	

This table represents the outliers for the last three years. A place is coloured if it is an above (Green) or below (Red) outlier in 2015. If an outlier in 2015 was not an outlier in either 2014 or 2013 then it is left as a pale colour and with nothing written in it. However if the outlier in 2015 has been an outlier multiple times over the last three years then the number of times it has been a positive or negative outlier is written in its box and the colour of the box is darkened correspondingly. This is useful for seeing where continuous issues or positive areas lie for each programme group.

On the right hand side of the table is a count of how many outliers there were for each programme group in each of the years. This can be used to see if programme groups are in general improving or getting worse.

The red and green arrows on the bottom left hand side represent whether the total number of positive and negative outliers has improved from 2014 to 2015.

Net Programme Group Outliers



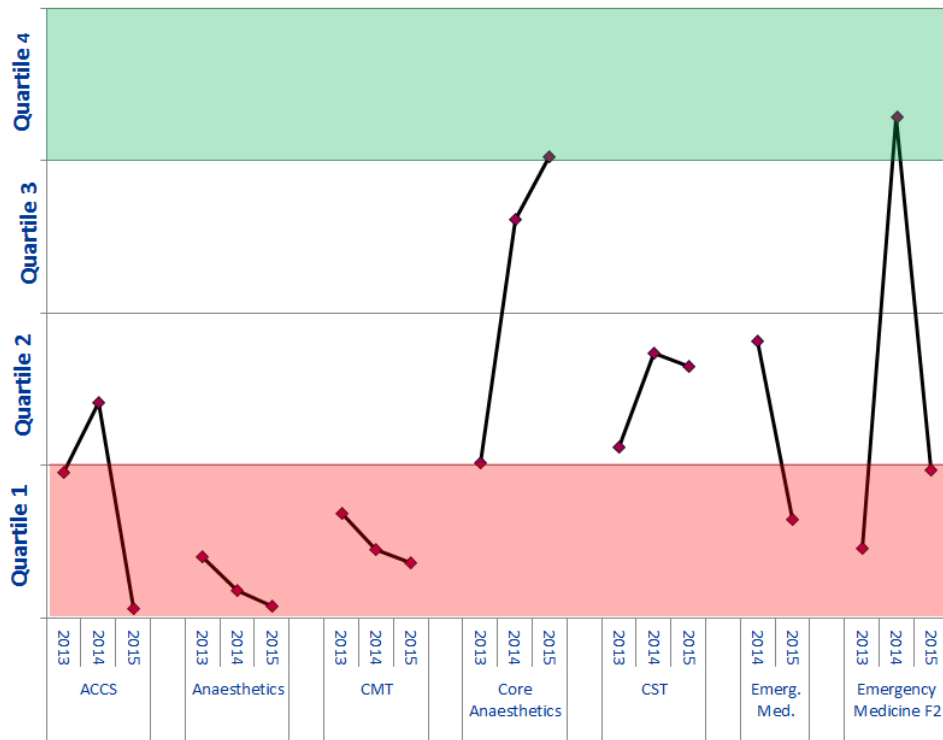
Each net programme group outlier is calculated by taking away the number of below outliers from the number of above outliers occurring across all programme groups for that trust in that year. Each trust has had their net outlier figure calculated for the last four years, permitting us to see the general trend for each trust and each workforce partnership.

Programme Group Overall Satisfaction Rankings

Trust Ranking

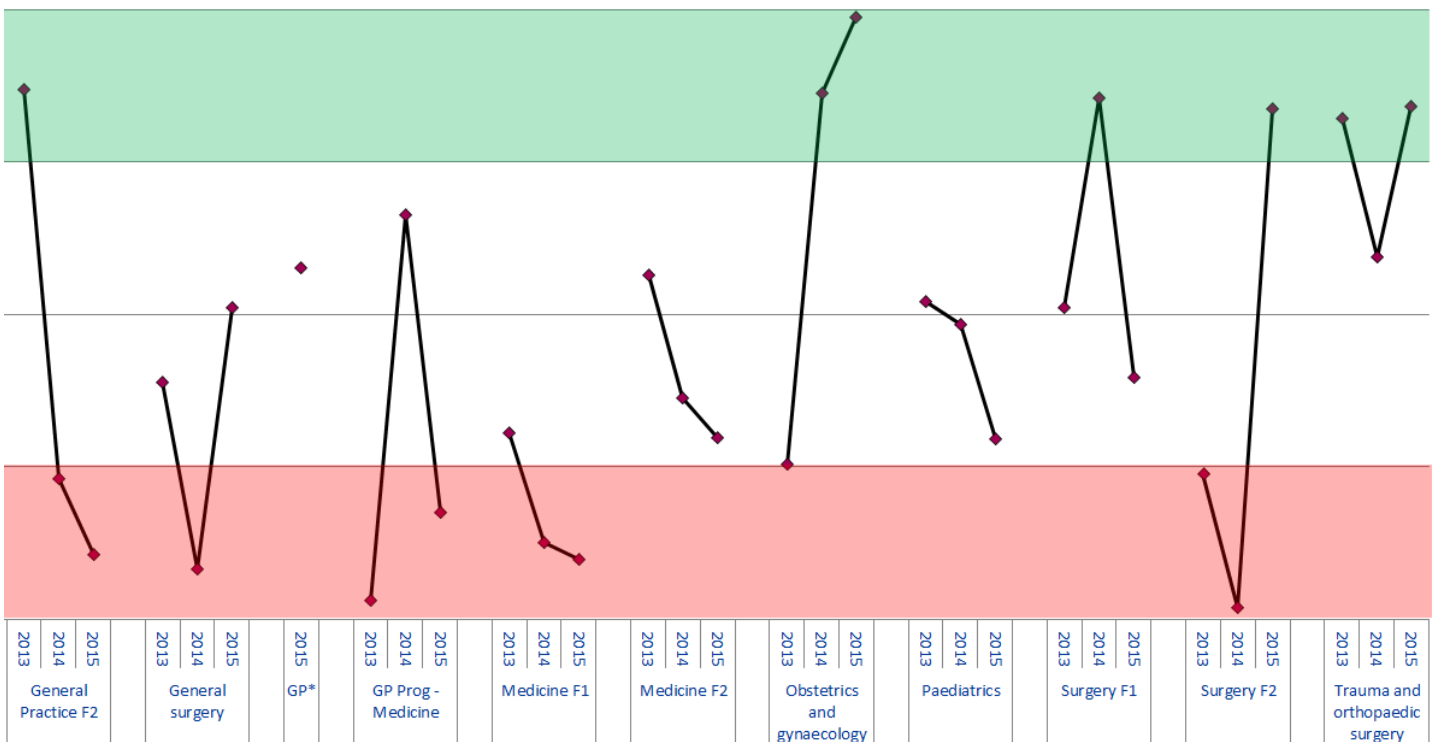
Total Number of Trusts Nationally Reporting for this Programme Group

99	86	117		143	150	149		140	151	149		108	48	33		110	83	84		42	88		132	27	109
130	133	119		159	157	152		169	170	164		145	139	136		153	147	143		77	105		149	152	144



Trust ranking of each Programme Group for 2013-2015 is calculated by ordering the means of the Overall Satisfaction of all trusts reporting for that programme group with n>2 respondents. Quartiles have been calculated from means of the other trusts, meaning if a trust is in the top quartile then it is in the top 25% of trusts which deliver that programme group.

20	123	150		88	132	66		50		149	53	122		116	146	146		70	105	113		114	21	2		82	83	114		81	24	97		115	150	24		24	53	21
153	160	168		144	144	135		118		154	158	148		167	167	162		161	165	161		153	153	148		171	161	162		166	166	161		151	153	148		135	131	133



Patient Safety Concerns

These are the East of England Multiprofessional Deanery GMC NTS Patient Concerns for 2015 Collated by Local Education Provider (LEP) in March 2015. The data below has been broadly categorised to show the responses to the patient safety concerns question by LEP.

Areas of Concern identified	Understaffing	High Workload/ Work Intensity	Patient Care Provided incl assessment, treatment	Lack of Team work	Inadequate Handover	Capacity [shortage of Beds]	Confidence issues including lack of competence, induction; cross cover	Inadequate Supervision	Tension b/w education & service	Nursing Issues	Locum issues incl quality, availability	Clinical Processes incl equipment; IT	Intercultural communication issues incl lang	Non PSC - Ethical Issue	Total
BEDFORD & HERTFORDSHIRE															
Bedford Hospital NHS Trust N= F1 = 1	1	1													2
East and North Hertfordshire NHS Trust N= C/ST1 = 3; C/ST2 = 1; ST3= 1	2	1	1		2					1					7
Hertfordshire Partnership NHS Foundation Trust N= C/ST2 = 1; ST4+ = 1;									1			1			2
Luton and Dunstable Hospital NHS Foundation Trust N= F2 = 1 ; C/ST2 = 2; ST4+ = 3;	1		2	1		1	2								7
West Hertfordshire Hospitals NHS Trust N= F1 = 3; F2 = 1	2	1	1		2		2			3	2	1			14
TOTAL	6	3	4	1	4	1	4	0	1	4	2	2	0	0	32
ESSEX															
Basildon and Thurrock University Hospitals NHS Foundation Trust N= F1 = 1; C/ST1 = 1	2				1			1			1	1			6
Colchester Hospital University NHS Foundation Trust N= F1 = 2 ; C/ST1 = 2; ST4+ = 1 ;	3	1	2				1				1				8
Mid Essex Hospital Services NHS Trust															0
Southend University Hospital NHS Foundation Trust N= ST3= 1											1				1
South Essex Partnership University NHS Foundation Trust N= ST3= 1	1	1			1	1									4
The Princess Alexandra Hospital NHS Trust N= F1 = 1; C/ST1 = 1	1	2	1												4
NHS West Essex CCG - The Gold Street Surgery															0
TOTAL	7	4	3	0	2	1	1	1	0	0	3	1	0	0	23

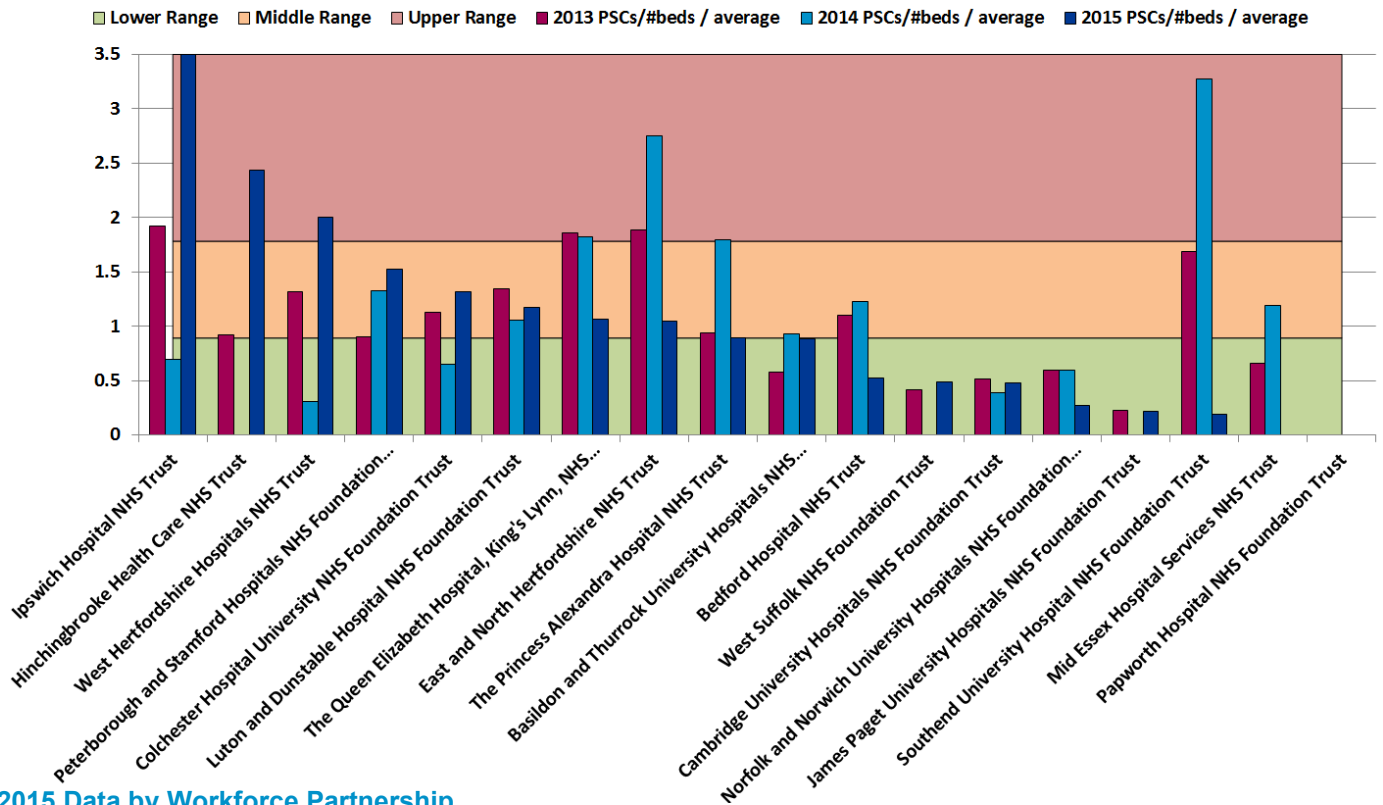
Patient Safety Concerns

These are the East of England Multiprofessional Deanery GMC NTS Patient Concerns for 2015 Collated by Local Education Provider (LEP) in March 2015. The data below has been broadly categorised to show the responses to the patient safety concerns question by LEP.

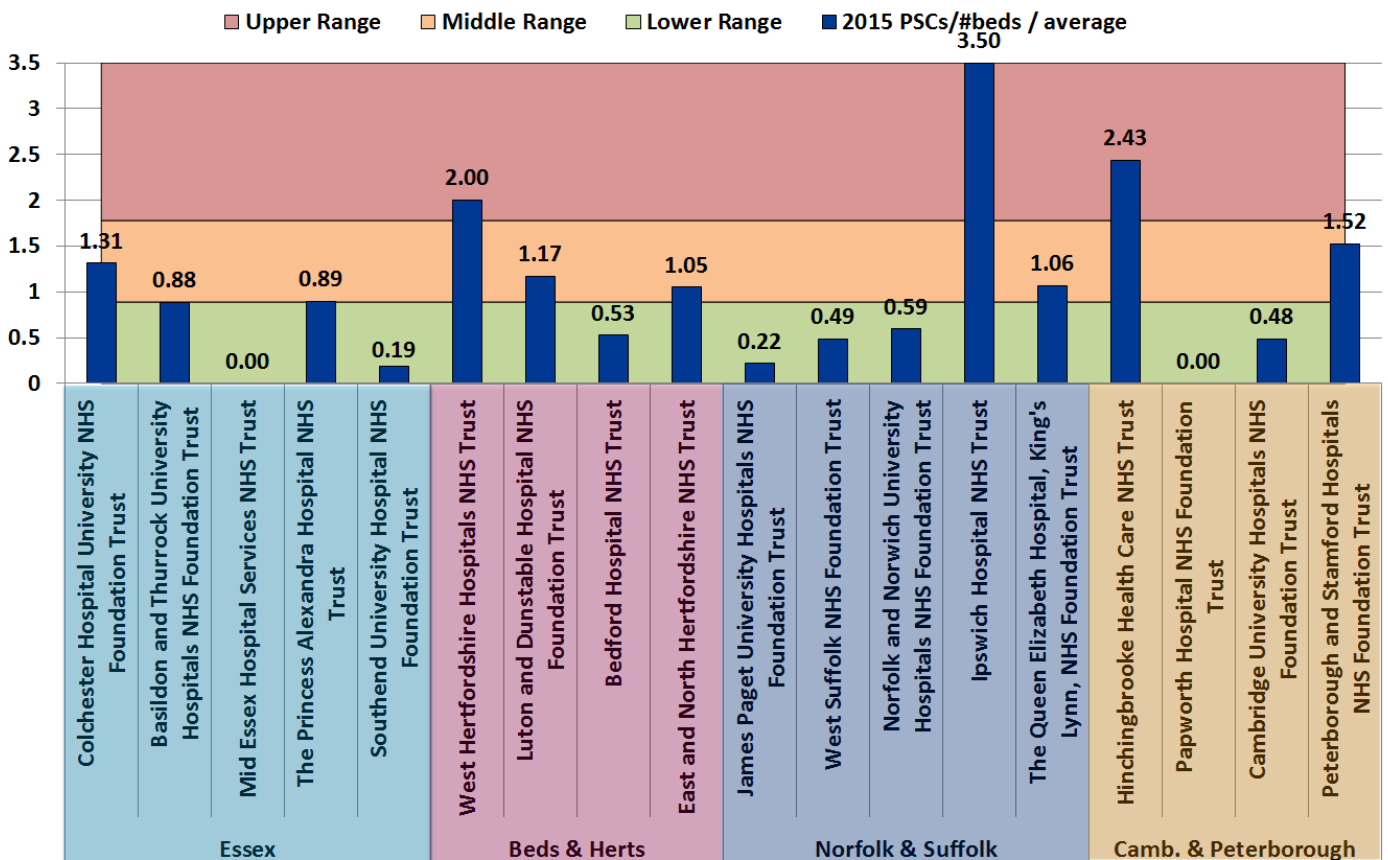
Areas of Concern identified	Understaffing	High Workload/ Work Intensity	Patient Care Provided Incl assessment, treatment	Lack of Team work	Inadequate Handover	Capacity [shortage of Beds]	Confidence Issues including lack of competence, induction; cross cover	Inadequate Supervision	Tension b/w education & service	Nursing Issues	Locum Issues incl quality, availability	Clinical Processes incl equipment; IT	Intercultural communication issues incl lang	Non PSC - Ethical Issue	Total
NORFOLK & SUFFOLK															
Ipswich Hospital NHS Trust N= F1 = 3; F2 = 1; ST4+ = 1;	5	2	3	2	2		2	2		1	1	1	1		22
James Paget University Hospitals NHS Foundation Trust N= ST4+ = 1;												1			1
Norfolk and Norwich University Hospitals NHS Foundation Trust N= F1 =1; C/ST1 = 1	2		1												3
Norfolk and Suffolk NHS Foundation Trust N= C/ST2 = 1	1	1													2
The Queen Elizabeth Hospital, King's Lynn, NHS Foundation Trust N= F1 = 2; ST4+ = 1;	1						1			1	1		1		5
West Suffolk NHS Foundation Trust N= C/ST2 = 1	1		1												2
TOTAL	10	3	5	2	2	0	3	2	0	2	2	2	2	0	35
CAMBRIDGE & PETERBOROUGH															
Cambridge University Hospitals NHS Foundation Trust N= F2 = 1; ST4+ = 2;	1	1				1		1				1			5
Cambridgeshire and Peterborough NHS Foundation Trust N= C/ST1 = 2	1	2	2				1		1						7
Hinchingbrooke Health Care NHS Trust N= F1 = 2; F2 =1	1	2	1						1	1					6
Papworth Hospital NHS Foundation Trust Peterborough and Stamford Hospitals NHS Foundation Trust N= F1 = 3; C/ST1 = 1	2		2	1	1		1	1			1				9
TOTAL	5	5	5	1	1	1	2	2	2	1	1	1	0	0	27
OVERALL TOTAL N=	28	15	17	4	9	3	10	5	3	7	8	6	2	0	117

Acute Trust Patient Safety Concerns per bed

2013-2015 Trend Data



2015 Data by Workforce Partnership



Calculation: (2015 Patient Safety Concerns / # beds in trust) / average all EoE acute trusts. Ranges are calculated using the standard deviation, centred around the target, 0. The number of beds is the overnight and day only bed numbers taken from NHS England at <http://www.england.nhs.uk/statistics/statistical-work-areas/bed-availability-and-occupancy/>, Q4 data of applicable financial year.