

PHEM Training in LONDON



Pre-Hospital Emergency Medicine training in London offers exceptional opportunities to work in services with world class reputations. The program is led by London's Air Ambulance and delivered in partnership with the London Ambulance Service.



The PHEM trainee will spend time with urgent and critical care APPs, HART, TRU, EPRR, call-takers & dispatchers with LAS. They will also spend time with adult critical care retrieval services for London.



London's
Air Ambulance
Charity

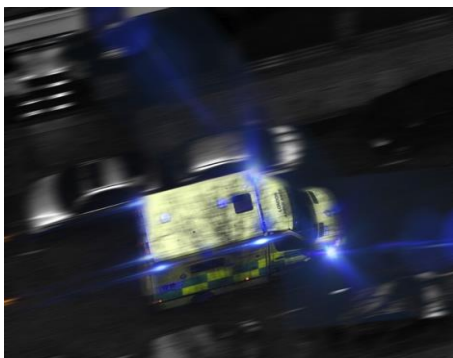


With over 35 years of pre-hospital care excellence performing on average 5 patient contact missions a day, with a high acuity leading to a 25% RSI rate, the clinical exposure gained far exceeds the requirements for PHEM training.

Consultants in pre-hospital care with world class reputations in the fields of major incidents, pre-hospital anaesthesia, pre-hospital blood transfusion, thoracotomy, REBOA, and medical education head the service and deliver exceptional training.



NHS
London Ambulance Service
NHS Trust



London Ambulance Service is the busiest ambulance service in the UK and is supporting the PHEM program through the delivery of expert training in major incident and mass gathering management, as well as dispatch and coordination.

London's Air Ambulance operates a 24/7/365 service, using an MD 902 helicopter during daylight hours and rapid response cars at night.



Twice weekly case review meetings (“D&D”) are led by consultants and provide considerable opportunity to learn from the collective experience of over 43,000 missions, as well as undertake case based discussions. Monthly clinical governance days attract an international as well as a local audience and are a major focus of clinical governance for the service.

Other flight doctors seconded to London's Air Ambulance come from around the world, often with extensive experience of aeromedical or retrieval medicine, providing an unparalleled opportunity for exchanging knowledge.

For further information contact: christine.hymers@nhs.net

Training & Experience



Further educational opportunities include extrication training with London Fire Brigade as well as specialist extrication & rescue training with London Underground.

Physician Response Unit

Trainees will work alongside the PRU fellows, EACs and Consultants in providing community emergency medicine. The aim of the service is not only to provide fast and effective treatment where it is needed, but to drastically improve patient wellbeing and overall experience by treating them where they feel most comfortable.



In collaboration with other PHEM scheme training days areas such as CBRN, environmental emergencies, obstetric and neonatal, retrieval and transfer medicine will be covered to ensure all curriculum areas are addressed.

From August 2025 we will offer 1 training post following scheme C full time PHEM for 12 months. The post is currently paid at Band 1A. The trainee will be based at the Royal London Hospital, Whitechapel, London.