

*Developing people  
for health and  
healthcare*

Health Education East of England GMC National  
Training Survey Analysis 2015: Trust Report

**The Queen Elizabeth  
Hospital King's Lynn  
NHS Foundation Trust**

# Narrative

## Trust Indicators

The dashboard for the The Queen Elizabeth Hospital King's Lynn NHS Foundation Trust illustrates where it stands relative to the national mean and the other trusts nationally participating in the National Training Survey (NTS). Eleven of the 14 indicators lie in the first quartile, two in the second, none in the third and one in the fourth quartile.

The chart illustrating the means by indicator from 2012 to 2015 shows some very different results for each indicator. The majority of indicators have had an increasing mean over the last four years, although a few of them had a dip last year. The Queen Elizabeth's Means by Indicator chart for 2014 and 2015 compared to the 2015 national mean illustrates that although most indicators are below the national mean, they have improved from the previous year.

## Programme Group Indicators

The chart for Overall Satisfaction for each programme group illustrates where The Queen Elizabeth's programme groups lie relative to each programme groups national mean. The quartiles were calculated for each programme group using the means of each trust participating in the NTS that runs that particular programme group. The Queen Elizabeth has five programme groups in the first quartile, one in the second, six in the third quartile and five in the fourth quartile. The Queen Elizabeth is in the bottom 25% of trusts which run the programme groups in quartile one while it is in the top 25% of trusts which run each of the programme groups which lie in quartile four.

## Outliers

The outliers by programme group show which areas are above (green/A) and below (red/B) outliers. A programme group is an outlier if it is in the top or bottom of the GMC calculated quartiles and its confidence intervals do not overlap those of the national mean.

The Surgery F1 has the most negative outliers with four while Trauma and Orthopaedic Surgery has the most positive outliers also with four.

The chart of net programme group outliers for 2012-2015 illustrates the net outliers for each programme group by trust, with positive outliers getting value +1 and negative outliers getting value -1. The Queen Elizabeth had a net outlier value of 0 in 2012, 5 in 2013, -8 in 2014 and 3 in 2015.

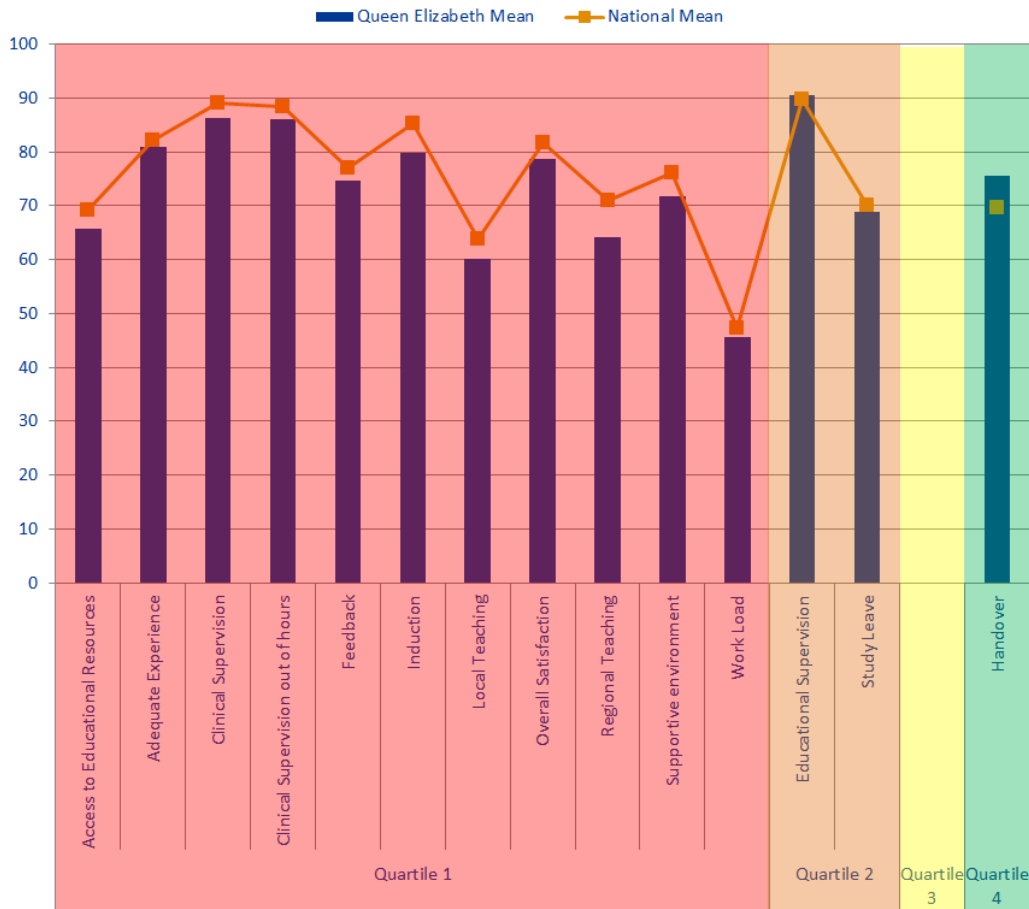
## Rankings

The rankings chart shows where The Queen Elizabeth comes in comparison to the other trusts delivering each of its programme groups for Overall Satisfaction. The graph is calculated by dividing by the total number of trusts who reported information for that programme group in order to be able to directly compare each programme group, no matter how many trusts deliver it. The Queen Elizabeth has two programme groups which have remained in the bottom quartile for the last 3 years, Medicine F1 and Obstetrics and Gynaecology F2. Acute Internal Medicine has remained in the top half for the last three years making it the most consistent and from 2013 to 2015 CMT and Emergency Medicine F2 are the only programme groups which have improved year on year.

## Patient Safety Concerns

The Queen Elizabeth has five patient safety concerns. The Queen Elizabeth is in the middle range for concerns per bed and this is down from 2013 and 2014.

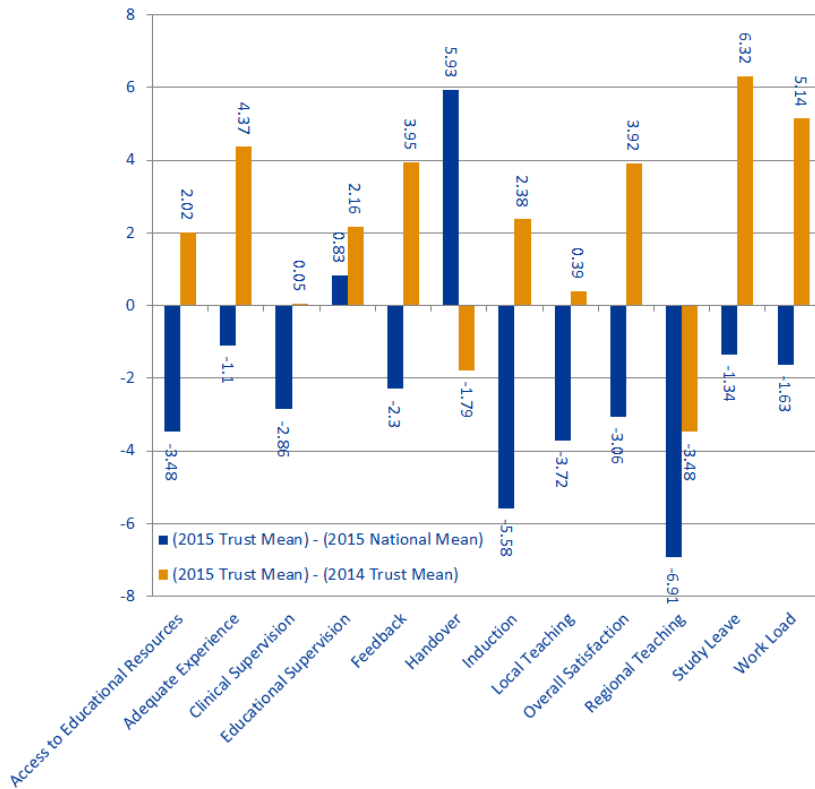
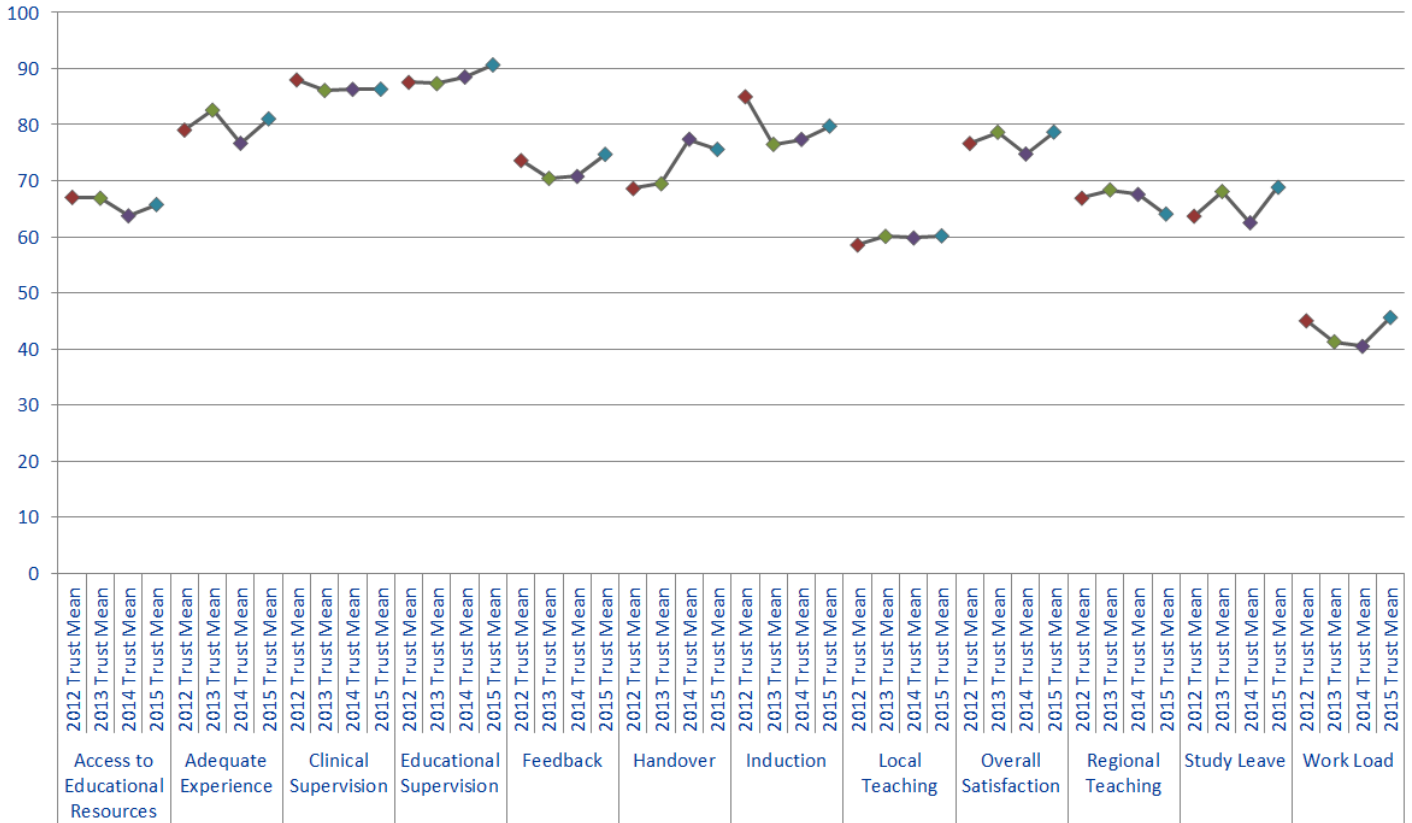
# Dashboard



Quartile	Indicator	Queen Elizabeth Mean	National Mean
Quartile 1	Access to Educational Resources	65.76	69.24
	Adequate Experience	81.04	82.14
	Clinical Supervision	86.33	89.19
	Clinical Supervision out of hours	86.04	88.44
	Feedback	74.71	77.01
	Induction	79.75	85.33
	Local Teaching	60.18	63.9
	Overall Satisfaction	78.68	81.74
	Regional Teaching	64.07	70.98
	Supportive environment	71.74	76.14
	Work Load	45.62	47.25
Quartile 2	Educational Supervision	90.65	89.82
	Study Leave	68.83	70.17
Quartile 3			
Quartile 4	Handover	75.6	69.67

The quartiles are calculated from the means for every trust that participated in the National Training Survey (NTS). The quartiles for each indicator are calculated separately. Therefore if a trust's indicator fell into the first quartile, then this means that the trust fell within the bottom 25% of trusts for that indicator. If a trust fell into the fourth quartile, then this means that the trust fell within the top 25% of trusts for that indicator.

# Trend Data



Indicator	2015 National Mean	2015 Trust Mean	2014 Trust Mean	(2015 Trust Mean) - (2015 National Mean)	(2015 Trust Mean) - (2014 Trust Mean)
Access to Educational Resources	69.24	65.76	63.74	-3.48	2.02
Adequate Experience	82.14	81.04	76.67	-1.1	4.37
Clinical Supervision	89.19	86.33	86.28	-2.86	0.05
Educational Supervision	89.82	90.65	88.49	0.83	2.16
Feedback	77.01	74.71	70.76	-2.3	3.95
Handover	69.67	75.6	77.39	5.93	-1.79
Induction	85.33	79.75	77.37	-5.58	2.38
Local Teaching	63.9	60.18	59.79	-3.72	0.39
Overall Satisfaction	81.74	78.68	74.76	-3.06	3.92
Regional Teaching	70.98	64.07	67.55	-6.91	-3.48
Study Leave	70.17	68.83	62.51	-1.34	6.32
Work Load	47.25	45.62	40.48	-1.63	5.14

2015 trust mean lies above the national mean, but is below last year's trust mean

2015 trust mean lies above both the national mean and last year's trust mean

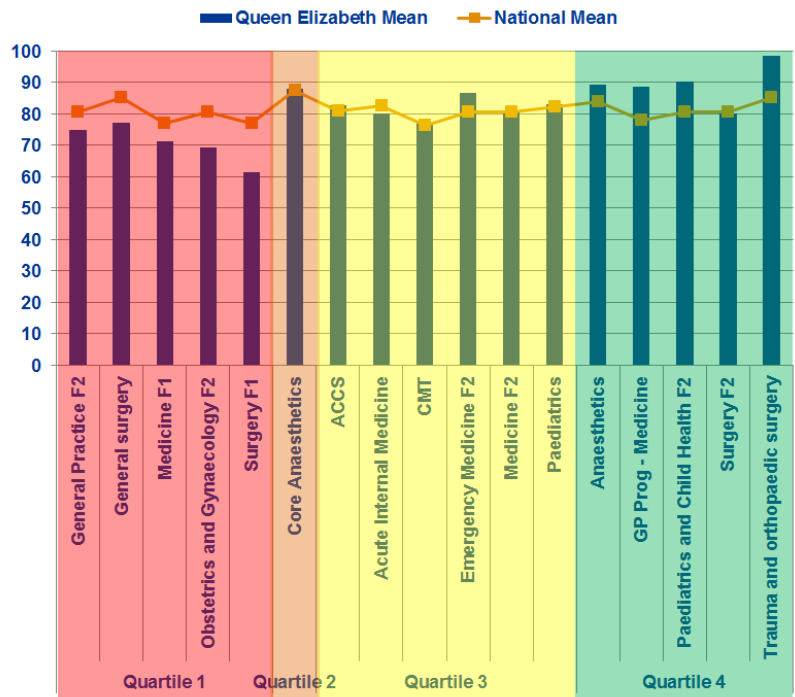
2015 trust mean lies below the national mean but above last year's trust mean

2015 trust mean lies below both the national mean and last year's trust mean

# Overall Satisfaction by Programme Group

## Programme Groups by Quartile

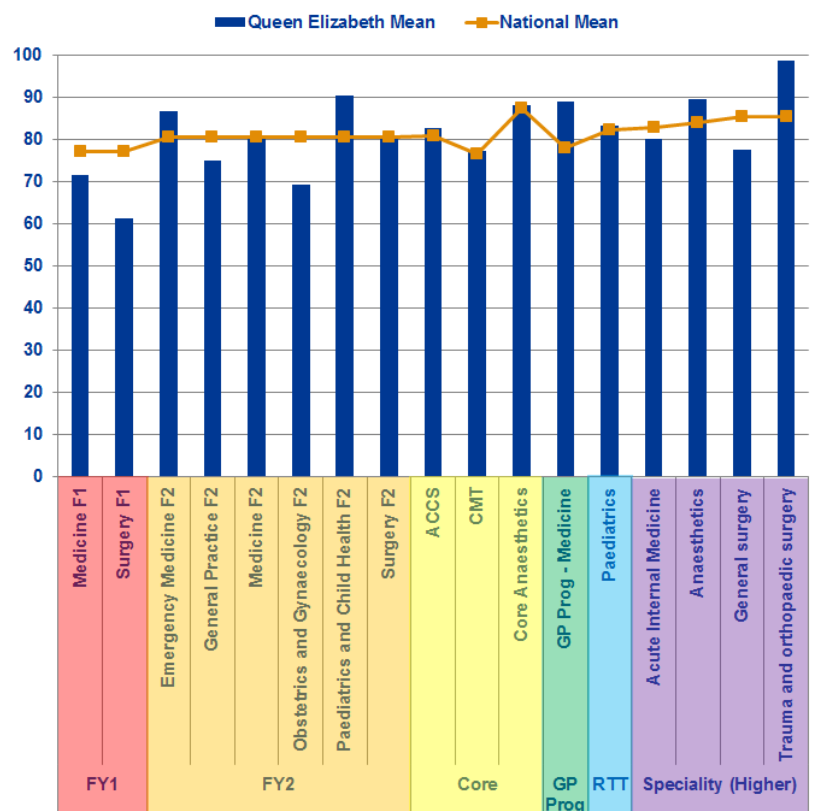
Quartiles	Programme Group	Queen Elizabeth Mean	National Mean
Quartile 1	General Practice F2	75	80.57
	General surgery	77.33	85.18
	Medicine F1	71.38	77.14
	Obstetrics and Gynaecology F2	69.33	80.57
	Surgery F1	61.33	77.14
Quartile 2	Core Anaesthetics	88	87.4
	ACCS	82.67	80.82
Quartile 3	Acute Internal Medicine	80	82.69
	CMT	77.2	76.35
	Emergency Medicine F2	86.67	80.57
	Medicine F2	81	80.57
Quartile 4	Paediatrics	83.2	82.29
	Anaesthetics	89.33	83.94
	GP Prog - Medicine	88.8	77.89
	Paediatrics and Child Health F2	90.4	80.57
	Surgery F2	80	80.57
	Trauma and orthopaedic surgery	98.67	85.18



Quartiles are calculated from the means for every trust that ran that programme group. The quartiles for each programme group are calculated separately. Therefore if a trust's speciality falls into the first quartile this means this speciality had an overall satisfaction mean that fell within the bottom 25% of trusts in the UK running this speciality.

## Programme Groups by Level

Level	Programme Group	Queen Elizabeth Mean	National Mean
FY1	Medicine F1	71.38	77.14
	Surgery F1	61.33	77.14
FY2	Emergency Medicine F2	86.67	80.57
	General Practice F2	75.00	80.57
	Medicine F2	81.00	80.57
	Obstetrics and Gynaecology F2	69.33	80.57
	Paediatrics and Child Health F2	90.40	80.57
	Surgery F2	80.00	80.57
Core	ACCS	82.67	80.82
	CMT	77.20	76.35
GP Prog	Core Anaesthetics	88.00	87.40
RTT	GP Prog - Medicine	88.80	77.89
	Paediatrics	83.20	82.29
Speciality (Higher)	Acute Internal Medicine	80.00	82.69
	Anaesthetics	89.33	83.94
	General surgery	77.33	85.18
	Trauma and orthopaedic surgery	98.67	85.18



# Programme Group Outliers

**A** Above Outlier  
**B** Below Outlier

Programme Groups	Overall Satisfaction	Patient Safety					Educational Development						Training Environment	
		Clinical Supervision	Clinical Supervision Out of Hours	Induction	Handover	Work Load	Education Supervision	Adequate Experience	Feedback	Local Teaching	Regional Teaching	Study Leave		Supportive Environment
ACCS														
Acute Internal Medicine					A									
Anaesthetics						A								
CMT						B								
Core Anaesthetics					A	A								
Emergency Medicine F2						B								
GP Prog - Medicine	A													
General Practice F2						A								
General surgery						A								
Medicine F1										B				
Medicine F2													B	
Obstetrics and Gynaecology F2									A					
Paediatrics													A	
Paediatrics and Child Health F2					A									
Surgery F1	B	B			A									
Surgery F2													B	
Trauma and orthopaedic surgery	A				A									
Acute Internal Medicine					A									
Anaesthetics														
CMT					A									
Core Anaesthetics										A				
General Practice F2														
Geriatric medicine	B				A					B				
GP Prog - Medicine					B									
GP Prog - Paediatrics and Child Health	A									A				
Obstetrics and gynaecology														
Obstetrics and Gynaecology F2	B				A									
Paediatrics and Child Health F2														
Surgery F2														
Trauma and orthopaedic surgery														
Anaesthetics	A													
Core Anaesthetics					A									
Emergency Medicine F2														
GP Prog - Medicine					B									
GP Prog - Paediatrics and Child Health	A	A												
General Practice F2	A	A												
General surgery														
Geriatric medicine	B													
Medicine F1					B									
Medicine F2														
Obstetrics and Gynaecology F2														
Paediatrics														
Surgery F1	B													
Trauma and orthopaedic surgery														

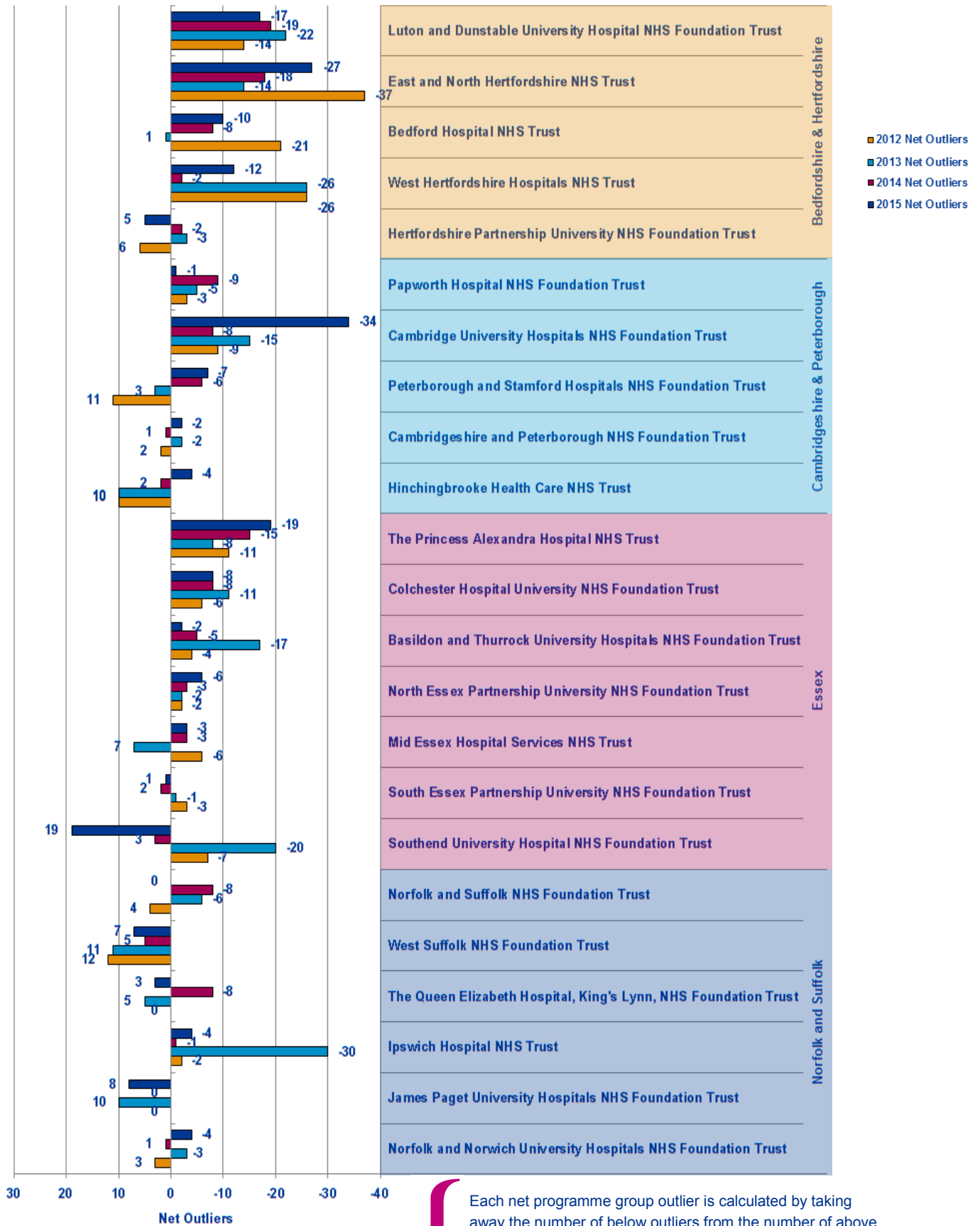
Programme Groups	Patient Safety					Educational Development					Training Environment/Infrastructure	2014 to 2015 CHANGE							
	Overall Satisfaction	Clinical Supervision	Clinical Supervision out of hours	Handover	Induction	Work Load	Educational Supervision	Adequate Experience	Local Teaching	Regional Teaching	Study Leave	Supportive environment	Access to Educational Resources	2014 to 2015 CHANGE					
														GREEN OUTLIERS	RED OUTLIERS	↑ BETTER	→ STATUS QUO	↓ WORSE	
ACCS																			
Acute Internal Medicine				2															
Anaesthetics																			
CMT																			
Core Anaesthetics																			
Emergency Medicine F2																			
GP Prog - Medicine																			
General Practice F2																			
General surgery																			
Medicine F1																			
Medicine F2																			
Obstetrics and Gynaecology F2																			
Paediatrics																			
Paediatrics and Child Health F2																			
Surgery F1																			
Surgery F2																			
Trauma and orthopaedic surgery																			
<b>Total</b>																			

This table represents the outliers for the last three years. A place is coloured if it is a n above (Green) or below (Red) outlier in 2015. If an outlier in 2015 was not an outlier in either 2014 or 2013 then it is left as a pale colour and with nothing written in it. However if the outlier in 2015 has been an outlier multiple times over the last three years then the number of times it has been a positive or negative outlier is written in its box and the colour of the box is darkened correspondingly. This is useful for seeing where continuous issues or positive areas lie for each programme group.

On the right hand side of the table is a count of how many outliers there were for each programme group in each of the years. This can be used to see if programme groups are in general improving or getting worse.

The red and green arrows on the bottom left hand side represent whether the total number of positive and negative outliers has improved from 2014 to 2015.

# Net Programme Group Outliers

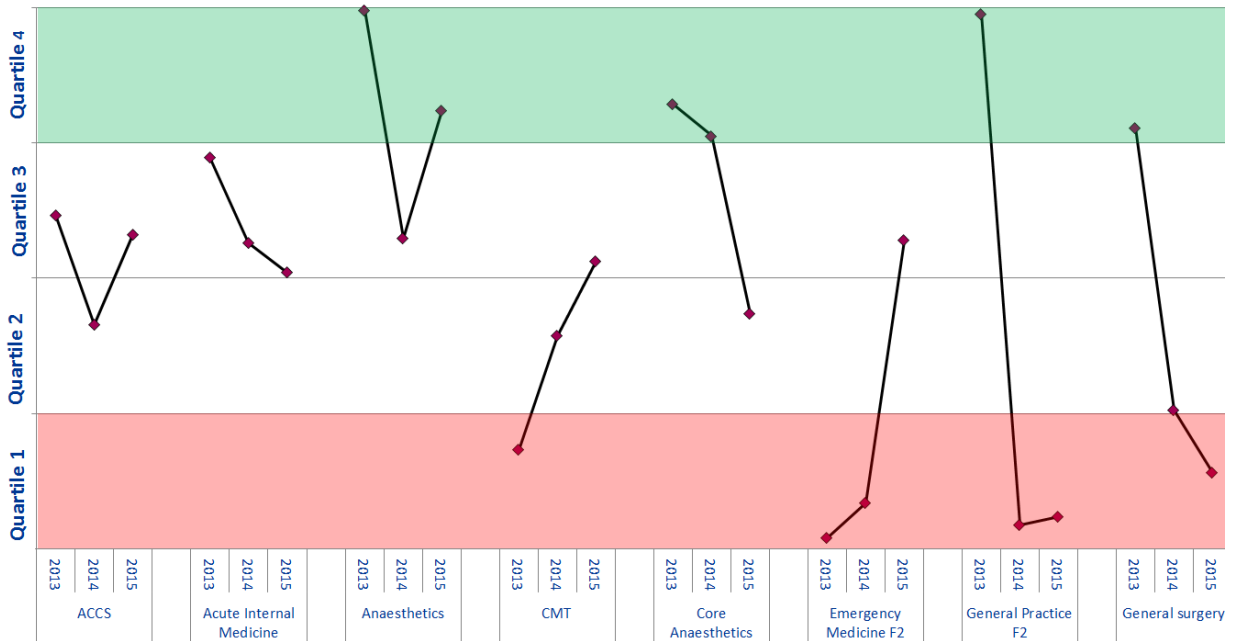


Each net programme group outlier is calculated by taking away the number of below outliers from the number of above outliers occurring across all programme groups for that trust in that year. Each trust has had their net outlier figure calculated for the last four years, permitting us to see the general trend for each trust and each workforce partnership.

# Programme Group Overall Satisfaction National Rankings

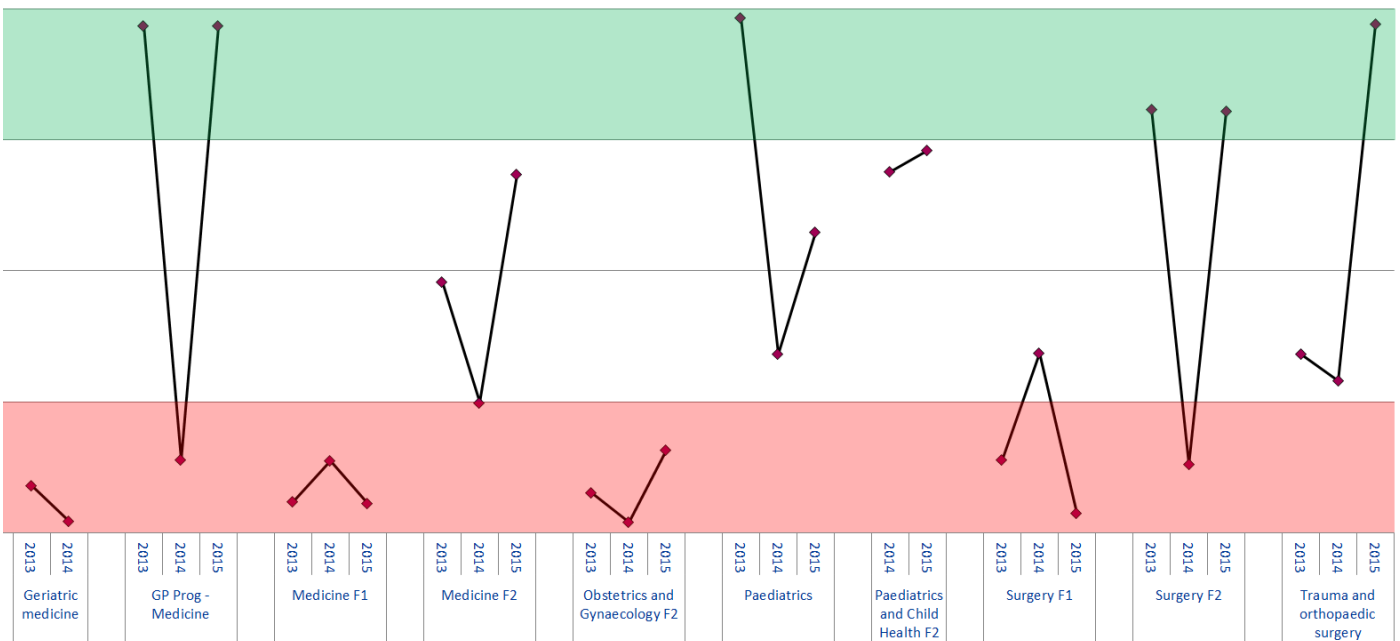
National Ranking
Total Number of Trusts Nationally Reporting for this Programme Group

50	78	50		13	20	24		1	67	29		138	103	77		26	33	77		146	139	62		2	153	158		32	107	116
130	133	119		47	46	49		159	157	152		169	170	164		145	139	136		149	152	144		153	160	168		144	144	135



Trust ranking of each Programme Group for 2013-2015 is calculated by ordering the means of the Overall Satisfaction of all trusts reporting for that programme group with n>2 respondents. Quartiles have been calculated from means of the other trusts, meaning if a trust is in the top quartile then it is in the top 25% of trusts which deliver that programme group.

81	91		5	136	5		157	144	153		84	124	51		48	48	48		3	106	69		19	17		143	109	155		29	133	29		89	93	4
89	93		154	158	148		167	167	162		161	165	161		52	49	57		171	161	162		61	63		166	166	161		151	153	148		135	131	133





# Patient Safety Concerns

These are the East of England Multiprofessional Deanery GMC NTS Patient Concerns for 2015 Collated by Local Education Provider (LEP) in March 2015. The data below has been broadly categorised to show the responses to the patient safety concerns question by LEP.

Areas of Concern identified	Understaffing	High Workload/ Work Intensity	Patient Care Provided incl assessment, treatment	Lack of Team work	Inadequate Handover	Capacity [shortage of Beds]	Confidence issues including lack of competence, induction; cross cover	Inadequate Supervision	Tension b/w education & service	Nursing Issues	Locum issues incl quality, availability	Clinical Processes incl equipment; IT	Intercultural communication issues incl lang	Non PSC - Ethical Issue	Total
<b>BEDFORD &amp; HERTFORDSHIRE</b>															
Bedford Hospital NHS Trust N= F1 = 1	1	1													2
East and North Hertfordshire NHS Trust N= C/ST1 = 3; C/ST2 = 1; ST3= 1	2	1	1		2					1					7
Hertfordshire Partnership NHS Foundation Trust N= C/ST2 = 1; ST4+ = 1;									1			1			2
Luton and Dunstable Hospital NHS Foundation Trust N= F2 = 1 ; C/ST2 = 2; ST4+ = 3;	1		2	1		1	2								7
West Hertfordshire Hospitals NHS Trust N= F1 = 3; F2 = 1	2	1	1		2		2			3	2	1			14
<b>TOTAL</b>	<b>6</b>	<b>3</b>	<b>4</b>	<b>1</b>	<b>4</b>	<b>1</b>	<b>4</b>	<b>0</b>	<b>1</b>	<b>4</b>	<b>2</b>	<b>2</b>	<b>0</b>	<b>0</b>	<b>32</b>
<b>ESSEX</b>															
Basildon and Thurrock University Hospitals NHS Foundation Trust N= F1 = 1; C/ST1 = 1	2				1			1			1	1			6
Colchester Hospital University NHS Foundation Trust N= F1 = 2 ; C/ST1 = 2; ST4+ = 1 ;	3	1	2				1				1				8
Mid Essex Hospital Services NHS Trust															0
Southend University Hospital NHS Foundation Trust N= ST3= 1											1				1
South Essex Partnership University NHS Foundation Trust N= ST3= 1	1	1			1	1									4
The Princess Alexandra Hospital NHS Trust N= F1 = 1; C/ST1 = 1	1	2	1												4
NHS West Essex CCG - The Gold Street Surgery															0
<b>TOTAL</b>	<b>7</b>	<b>4</b>	<b>3</b>	<b>0</b>	<b>2</b>	<b>1</b>	<b>1</b>	<b>1</b>	<b>0</b>	<b>0</b>	<b>3</b>	<b>1</b>	<b>0</b>	<b>0</b>	<b>23</b>

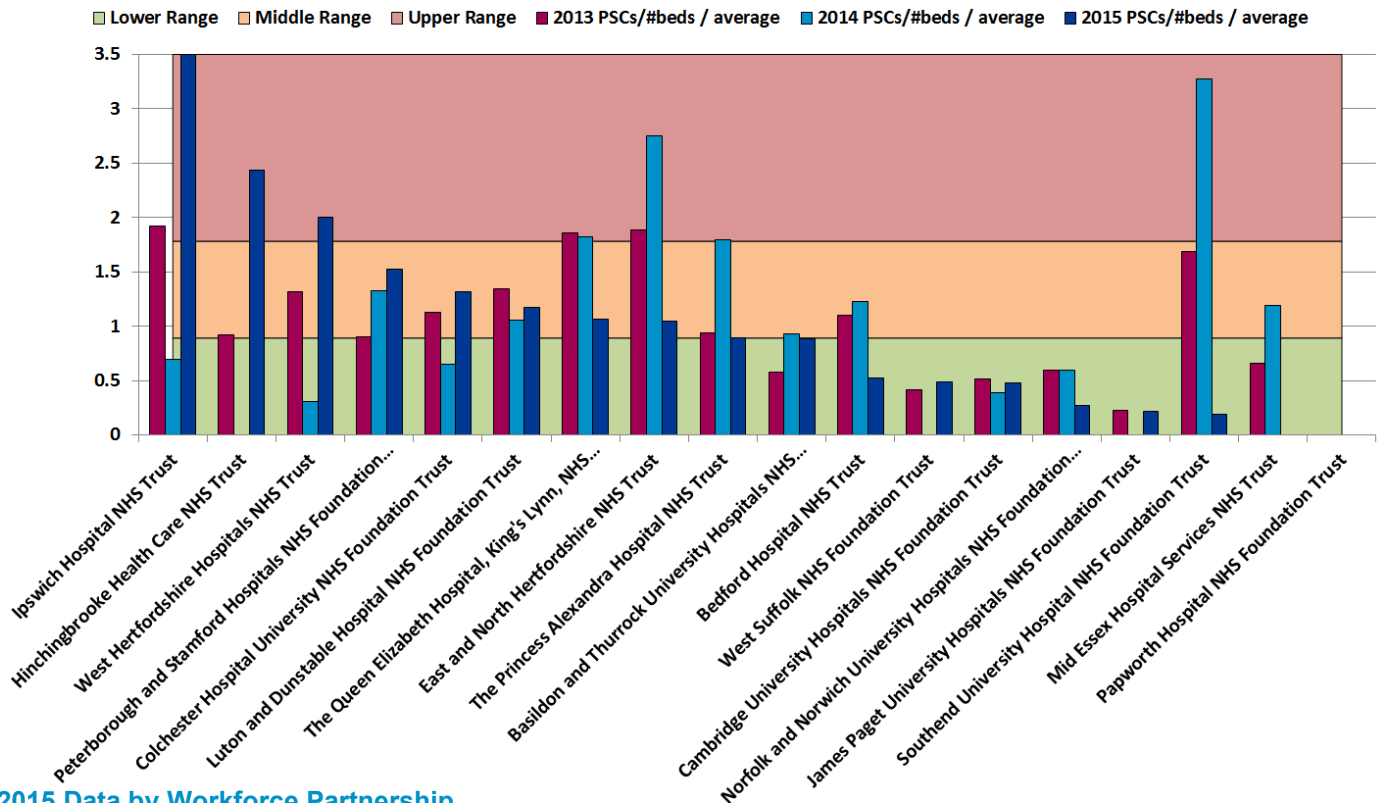
# Patient Safety Concerns

These are the East of England Multiprofessional Deanery GMC NTS Patient Concerns for 2015 Collated by Local Education Provider (LEP) in March 2015. The data below has been broadly categorised to show the responses to the patient safety concerns question by LEP.

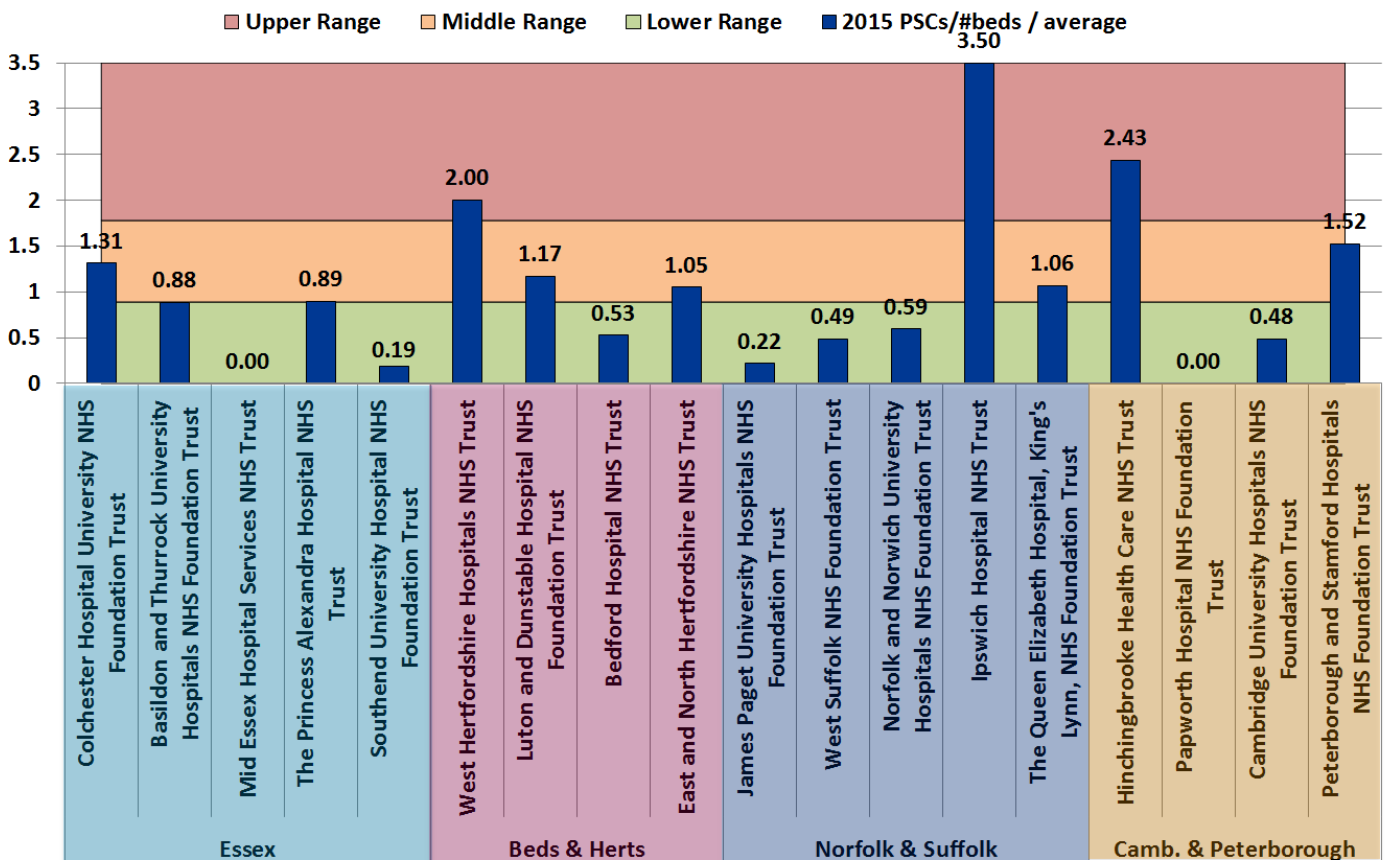
Areas of Concern identified	Understaffing	High Workload/ Work Intensity	Patient Care Provided Incl assessment, treatment	Lack of Team work	Inadequate Handover	Capacity [shortage of Beds]	Confidence Issues including lack of competence, induction; cross cover	Inadequate Supervision	Tension b/w education & service	Nursing Issues	Locum Issues incl quality, availability	Clinical Processes incl equipment; IT	Intercultural communication issues incl lang	Non PSC - Ethical Issue	Total
<b>NORFOLK &amp; SUFFOLK</b>															
Ipswich Hospital NHS Trust N= F1 = 3; F2 = 1; ST4+ = 1;	5	2	3	2	2		2	2		1	1	1	1		22
James Paget University Hospitals NHS Foundation Trust N= ST4+ = 1;												1			1
Norfolk and Norwich University Hospitals NHS Foundation Trust N= F1 = 1; C/ST1 = 1	2		1												3
Norfolk and Suffolk NHS Foundation Trust N= C/ST2 = 1	1	1													2
The Queen Elizabeth Hospital, King's Lynn, NHS Foundation Trust N= F1 = 2; ST4+ = 1;	1						1			1	1		1		5
West Suffolk NHS Foundation Trust N= C/ST2 = 1	1		1												2
<b>TOTAL</b>	<b>10</b>	<b>3</b>	<b>5</b>	<b>2</b>	<b>2</b>	<b>0</b>	<b>3</b>	<b>2</b>	<b>0</b>	<b>2</b>	<b>2</b>	<b>2</b>	<b>2</b>	<b>0</b>	<b>35</b>
<b>CAMBRIDGE &amp; PETERBOROUGH</b>															
Cambridge University Hospitals NHS Foundation Trust N= F2 = 1; ST4+ = 2;	1	1				1		1				1			5
Cambridgeshire and Peterborough NHS Foundation Trust N= C/ST1 = 2	1	2	2				1		1						7
Hinchingbrooke Health Care NHS Trust N= F1 = 2; F2 = 1	1	2	1						1	1					6
Papworth Hospital NHS Foundation Trust															0
Peterborough and Stamford Hospitals NHS Foundation Trust N= F1 = 3; C/ST1 = 1	2		2	1	1		1	1			1				9
<b>TOTAL</b>	<b>5</b>	<b>5</b>	<b>5</b>	<b>1</b>	<b>1</b>	<b>1</b>	<b>2</b>	<b>2</b>	<b>2</b>	<b>1</b>	<b>1</b>	<b>1</b>	<b>0</b>	<b>0</b>	<b>27</b>
<b>OVERALL TOTAL N=</b>	<b>28</b>	<b>15</b>	<b>17</b>	<b>4</b>	<b>9</b>	<b>3</b>	<b>10</b>	<b>5</b>	<b>3</b>	<b>7</b>	<b>8</b>	<b>6</b>	<b>2</b>	<b>0</b>	<b>117</b>

# Acute Trust Patient Safety Concerns per bed

## 2013-2015 Trend Data



## 2015 Data by Workforce Partnership



Calculation: (2015 Patient Safety Concerns / # beds in trust) / average all EoE acute trusts. Ranges are calculated using the standard deviation, centred around the target, 0. The number of beds is the overnight and day only bed numbers taken from NHS England at <http://www.england.nhs.uk/statistics/statistical-work-areas/bed-availability-and-occupancy/>, Q4 data of applicable financial year.