

*Developing people
for health and
healthcare*

Health Education East of England GMC National
Training Survey Analysis 2015: Trust Report

Ipswich Hospital NHS Trust



Narrative

Trust Indicators

The dashboard for the Ipswich Hospital NHS Trust illustrates where it stands relative to the national mean and the other trusts nationally participating in the National Training Survey (NTS). Nine of the 14 indicators lie in the first quartile, five in the second and none in either the third or fourth.

The chart illustrating the means by indicator from 2012 to 2015 shows in general there is an upward trend except for regional teaching and work load steadily decreasing. Ipswich's Means by Indicator chart for 2014 and 2015 compared to the 2015 national mean illustrates that in general its means are below the national mean except for Access to Educational Resources and Study Leave.

Programme Group Indicators

The chart for Overall Satisfaction for each programme group illustrates where Ipswich's programme groups lie relative to each programme group's national mean. The quartiles were calculated for each programme group using the means of each trust participating in the NTS that runs that particular programme group. Ipswich has five programme groups in the first quartile, six in the second, four in the third quartile and five in the fourth quartile. Ipswich is in the bottom 25% of trusts which run the programme groups in quartile one while it is in the top 25% of trusts which run each of the programme groups which lie in quartile four.

Outliers

The outliers by programme group show which areas are above (green/A) and below (red/B) outliers. A programme group is an outlier if it is in the top or bottom of the GMC calculated quartiles and its confidence intervals do not overlap those of the national mean.

The Surgery F1 has the most negative outliers with five. Paediatrics and Child Health F2 has the most positive outliers with five too.

The chart of net programme group outliers for 2012-2015 illustrates the net outliers for each programme group by trust, with positive outliers getting value +1 and negative outliers getting value -1. Ipswich had a net outlier value of -2 in 2012, -30 in 2013, -1 in 2014 and -4 in 2015.

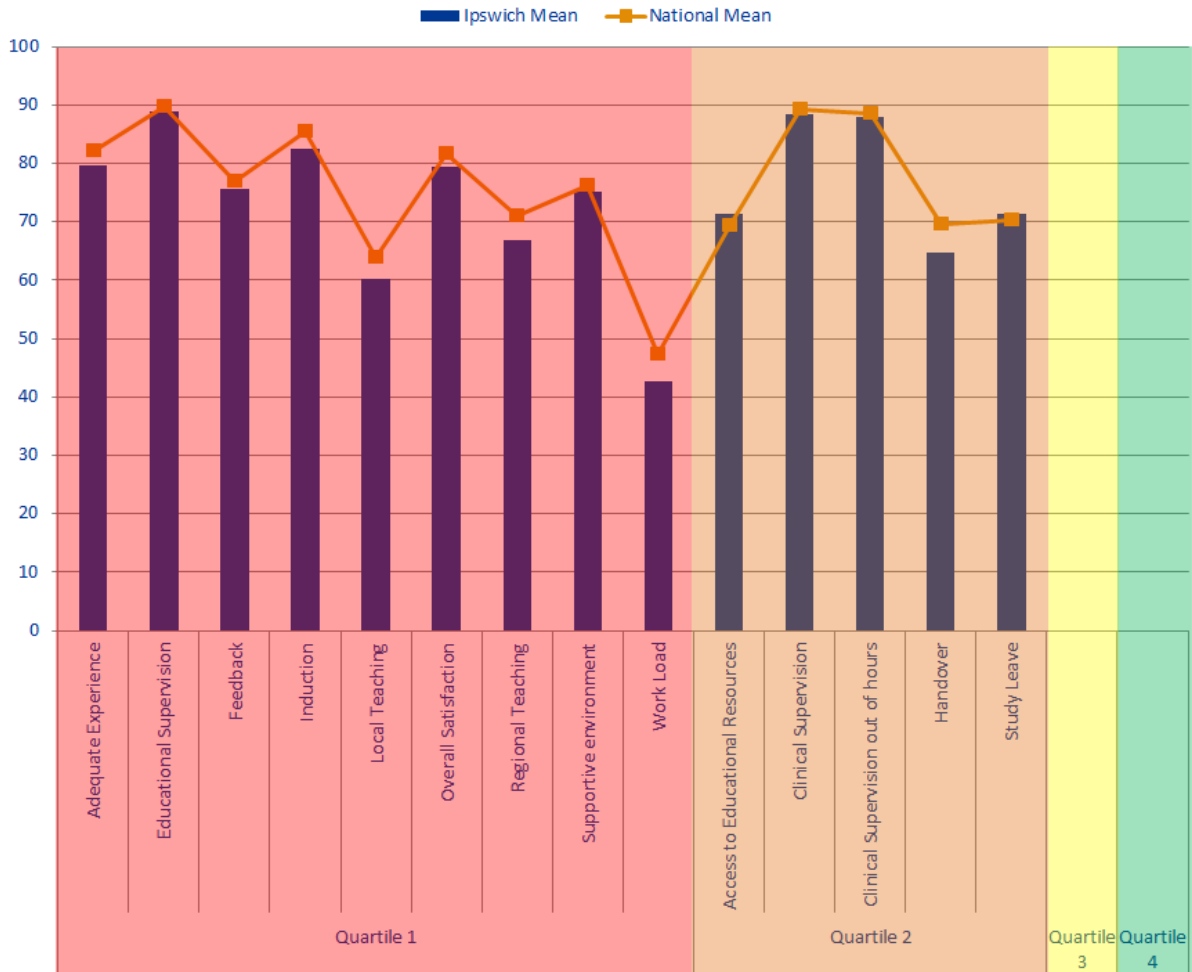
Rankings

The rankings chart shows where Ipswich comes in comparison to the other trusts delivering each of its programme groups for Overall Satisfaction. The graph is calculated by dividing by the total number of trusts who reported information for that programme group in order to be able to directly compare each programme group, no matter how many trusts deliver it. Ipswich has two programme groups which have remained in the bottom quartile for the last 3 years, Anaesthetics and General Surgery. From 2013 to 2015 Emergency Medicine F2 has moved from the bottom quartile to the top quartile making it the most improved

Patient Safety Concerns

Ipswich has 22 patient safety concerns, 5 of these coming in understaffing. Ipswich is in the upper range for concerns per bed and this is up from 2013 and 2014.

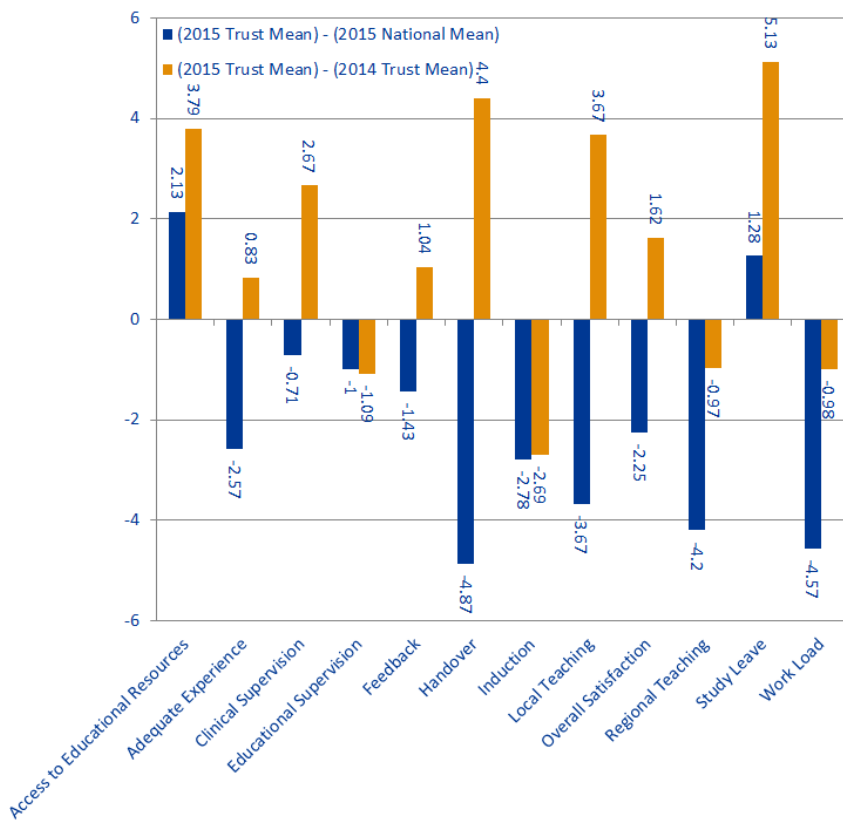
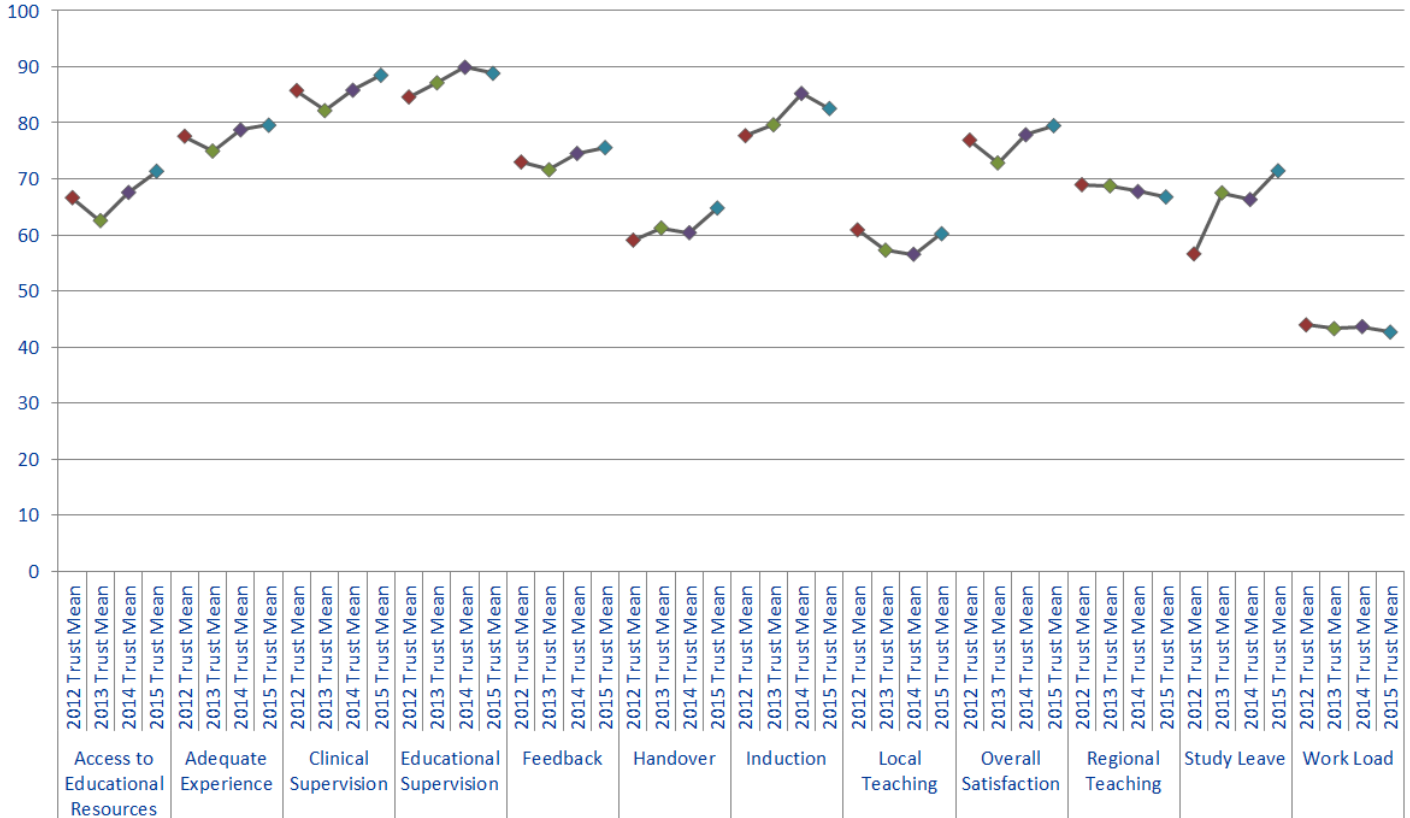
Dashboard



Quartile	Indicator	Ipswich Mean	National Mean
Quartile 1	Adequate Experience	79.57	82.14
	Educational Supervision	88.82	89.82
	Feedback	75.58	77.01
	Induction	82.55	85.33
	Local Teaching	60.23	63.9
	Overall Satisfaction	79.49	81.74
	Regional Teaching	66.78	70.98
	Supportive environment	75.15	76.14
	Work Load	42.68	47.25
Quartile 2	Access to Educational Resources	71.37	69.24
	Clinical Supervision	88.48	89.19
	Clinical Supervision out of hours	87.89	88.44
	Handover	64.8	69.67
	Study Leave	71.45	70.17
Quartile 3			
Quartile 4			

The quartiles are calculated from the means for every trust that participated in the National Training Survey (NTS). The quartiles for each indicator are calculated separately. Therefore if a trust's indicator fell into the first quartile, then this means that the trust fell within the bottom 25% of trusts for that indicator. If a trust fell into the fourth quartile, then this means that the trust fell within the top 25% of trusts for that indicator.

Trend Data



Indicator	2015 National Mean	2015 Trust Mean	2014 Trust Mean	(2015 Trust Mean) - (2015 National Mean)	(2015 Trust Mean) - (2014 Trust Mean)
Access to Educational Resources	69.24	71.37	67.58	2.13	3.79
Adequate Experience	82.14	79.57	78.74	-2.57	0.83
Clinical Supervision	89.19	88.48	85.81	-0.71	2.67
Educational Supervision	89.82	88.82	89.91	-1	-1.09
Feedback	77.01	75.58	74.54	-1.43	1.04
Handover	69.67	64.8	60.4	-4.87	4.4
Induction	85.33	82.55	85.24	-2.78	-2.69
Local Teaching	63.9	60.23	56.56	-3.67	3.67
Overall Satisfaction	81.74	79.49	77.87	-2.25	1.62
Regional Teaching	70.98	66.78	67.75	-4.2	-0.97
Study Leave	70.17	71.45	66.32	1.28	5.13
Work Load	47.25	42.68	43.66	-4.57	-0.98

2015 trust mean lies above the national mean, but is below last year's trust mean

2015 trust mean lies above both the national mean and last year's trust mean

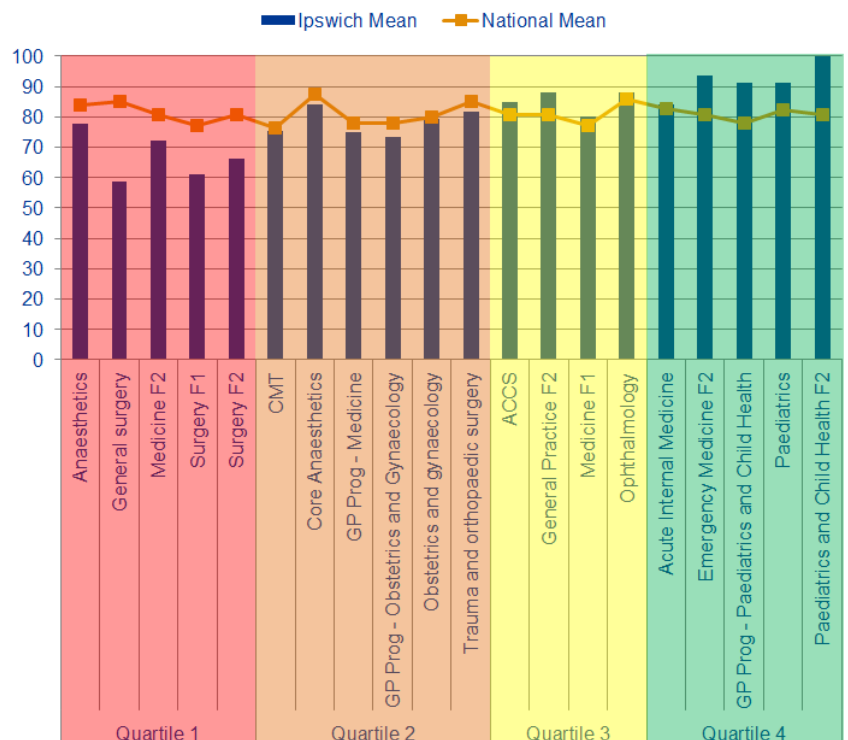
2015 trust mean lies below the national mean but above last year's trust mean

2015 trust mean lies below both the national mean and last year's trust mean

Overall Satisfaction by Programme Group

Programme Groups by Quartile

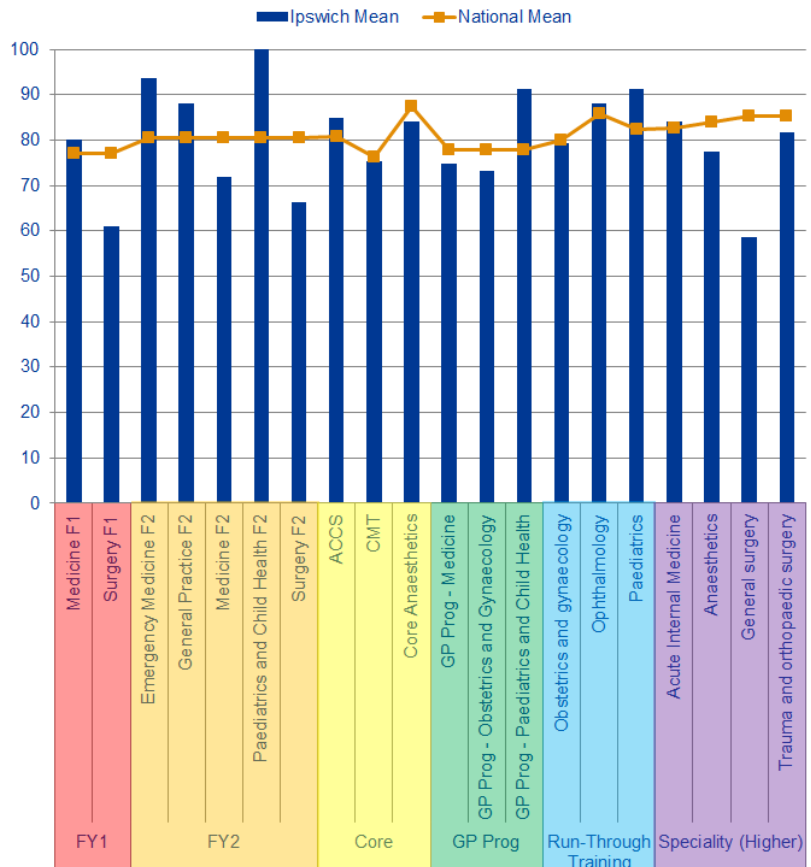
Quartiles	Programme Group	Ipswich Mean	National Mean
Quartile 1	Anaesthetics	77.6	83.94
	General surgery	58.67	85.18
	Medicine F2	72	80.57
	Surgery F1	61	77.14
	Surgery F2	66.29	80.57
Quartile 2	CMT	75.27	76.35
	Core Anaesthetics	84	87.4
	GP Prog - Medicine	74.86	77.89
	GP Prog - Obstetrics and Gynaecology	73.33	77.89
	Obstetrics and gynaecology	79.43	79.96
Quartile 3	Trauma and orthopaedic surgery	81.71	85.18
	ACCS	85	80.82
	General Practice F2	88	80.57
	Medicine F1	80	77.14
	Ophthalmology	88	85.91
Quartile 4	Acute Internal Medicine	84	82.69
	Emergency Medicine F2	93.6	80.57
	GP Prog - Paediatrics and Child Health	91.2	77.89
	Paediatrics	91.2	82.29
	Paediatrics and Child Health F2	100	80.57



Quartiles are calculated from the means for every trust that ran that programme group. The quartiles for each programme group are calculated separately. Therefore if a trust's speciality falls into the first quartile this means this speciality had an overall satisfaction mean that fell within the bottom 25% of trusts in the UK running this speciality.

Programme Groups by Level

Level	Programme Group	Ipswich Mean	National Mean
FY1	Medicine F1	80.00	77.14
	Surgery F1	61.00	77.14
FY2	Emergency Medicine F2	93.60	80.57
	General Practice F2	88.00	80.57
	Medicine F2	72.00	80.57
	Paediatrics and Child Health F2	100.00	80.57
	Surgery F2	66.29	80.57
Core	ACCS	85.00	80.82
	CMT	75.27	76.35
	Core Anaesthetics	84.00	87.40
GP Prog	GP Prog - Medicine	74.86	77.89
	GP Prog - Obstetrics and Gynaecology	73.33	77.89
	GP Prog - Paediatrics and Child Health	91.20	77.89
Run-Through Training	Obstetrics and gynaecology	79.43	79.96
	Ophthalmology	88.00	85.91
	Paediatrics	91.20	82.29
	Acute Internal Medicine	84.00	82.69
Speciality (Higher)	Anaesthetics	77.60	83.94
	General surgery	58.67	85.18
	Trauma and orthopaedic surgery	81.71	85.18



Programme Group Outliers

A Above Outlier
B Below Outlier

Programme Group	Overall Satisfaction	Patient Safety					Educational Development					Training Environment / Infrastructure		
		Clinical Supervision	Clinical Supervision Out of Hours	Induction	Handover	Work Load	Education Supervision	Adequate Experience	Feedback	Local Teaching	Regional Teaching	Study Leave	Supportive Environment	Access to Educational Resources
ACCS														
Acute Internal Medicine														
Anaesthetics														
CMT														
Core Anaesthetics														
Emergency Medicine F2	A													
GP Prog - Medicine														
GP Prog - Obstetrics and Gynaecology														
GP Prog - Paediatrics and Child Health	A	A	A											
General Practice F2														
General surgery	B	B												
Medicine F1														
Medicine F2														
Obstetrics and gynaecology														
Ophthalmology														
Paediatrics														
Paediatrics and Child Health F2														
Surgery F1	B	B												
Surgery F2														
Trauma and orthopaedic surgery														
ACCS	B													
Acute Internal Medicine														
Anaesthetics														
Emergency Medicine F2														
General surgery														
GP Prog - Medicine														
GP Prog - Surgery														
Medicine F1														
Ophthalmology														
Otolaryngology														
Paediatrics														
Psychiatry F1														
Surgery F2														
Trauma and orthopaedic surgery														
All trainees (Foundation, Core, Speciality and GPs)														
Acute Internal Medicine														
Anaesthetics	B													
CMT														
Emergency Medicine F2														
General Practice F2	A	A												
General surgery														
Geriatric medicine														
GP Prog - Obstetrics and Gynaecology														
GP Prog - Paediatrics and Child Health														
Medicine F1														
Medicine F2														
Obstetrics and gynaecology														
Otolaryngology														
Paediatrics														
Surgery F1	B	B												
Surgery F2														
Trauma and orthopaedic surgery														

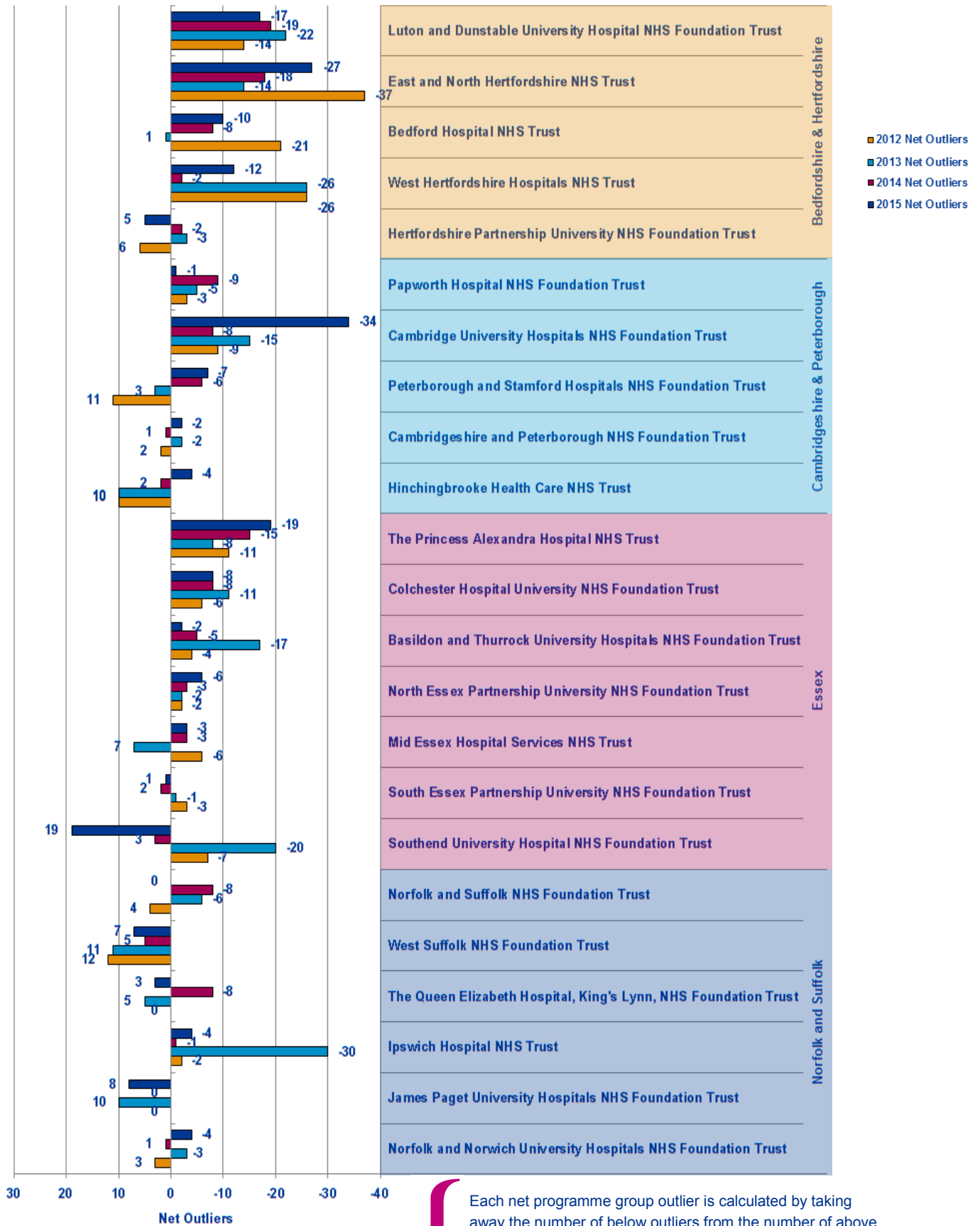
Programme Group	Overall Satisfaction	Patient Safety					Educational Development					Training Environment/Infrastructure	Access to Educational Resources	GREEN OUTLIERS	RED OUTLIERS	2014 to 2015 CHANGE					
		Clinical Supervision	Clinical Supervision out of hours	Handover	Induction	Work Load	Educational Supervision	Adequate Experience	Feedback	Local Teaching	Regional Teaching						Study Leave	Supportive environment			
ACCS															2						
Acute Internal Medicine																2	3	1			
Anaesthetics																3	2				
CMT																2	1				
Core Anaesthetics																	1				
Emergency Medicine F2			2												1	2	1				
GP Prog - Medicine															1	1	1				
GP Prog - Obstetrics and Gynaecology																7	1				
GP Prog - Paediatrics and Child Health															2	1	4				
General Practice F2															6	1					
General surgery															1	1	4				
Medicine F1																4	1				
Medicine F2																					
Obstetrics and gynaecology																	5	2			
Ophthalmology																1		1			
Paediatrics															3	1	3	1			
Paediatrics and Child Health F2																5					
Surgery F1		2	2														3	5			
Surgery F2															1	1	3	1			
Trauma and orthopaedic surgery															1	2					
Total															9	8	15	32	8	19	↑↓

This table represents the outliers for the last three years. A place is coloured if it is a n above (Green) or below (Red) outlier in 2015. If an outlier in 2015 was not an outlier in either 2014 or 2013 then it is left as a pale colour and with nothing written in it. However if the outlier in 2015 has been an outlier multiple times over the last three years then the number of times it has been a positive or negative outlier is written in its box and the colour of the box is darkened correspondingly. This is useful for seeing where continuous issues or positive areas lie for each programme group.

On the right hand side of the table is a count of how many outliers there were for each programme group in each of the years. This can be used to see if programme groups are in general improving or getting worse.

The red and green arrows on the bottom left hand side represent whether the total number of positive and negative outliers has improved from 2014 to 2015.

Net Programme Group Outliers

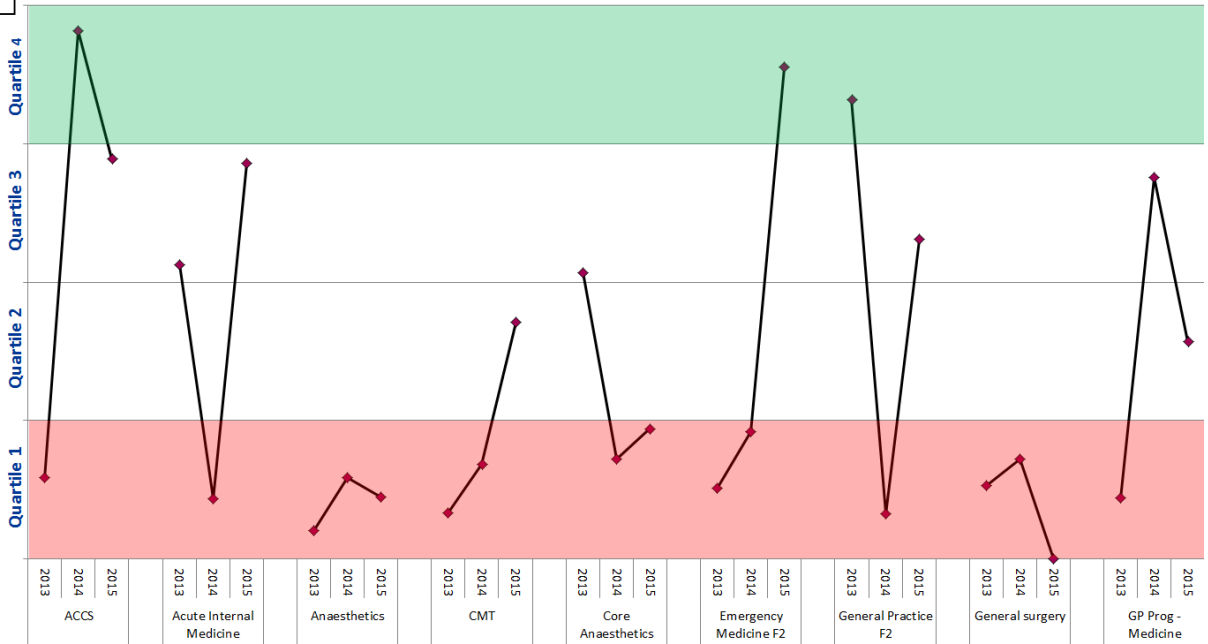


Each net programme group outlier is calculated by taking away the number of below outliers from the number of above outliers occurring across all programme groups for that trust in that year. Each trust has had their net outlier figure calculated for the last four years, permitting us to see the general trend for each trust and each workforce partnership.

Programme Group Overall Satisfaction National Rankings

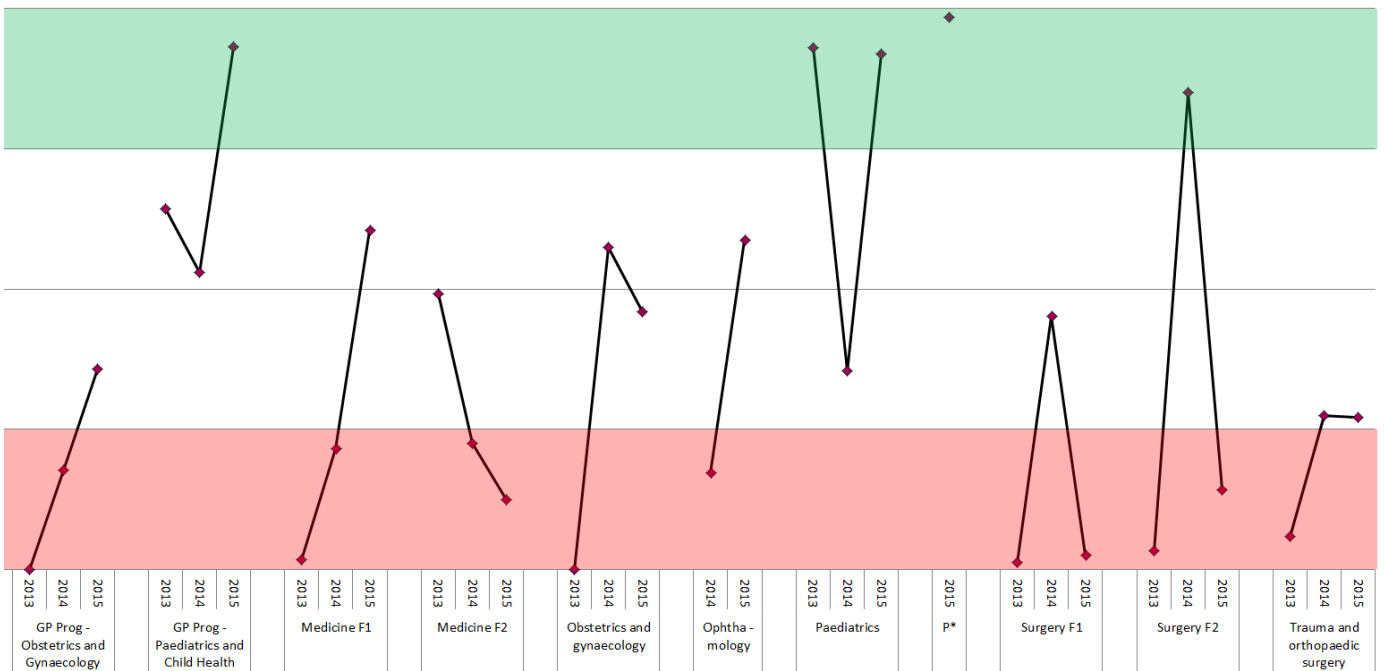
National Ranking
Total Number of Trusts Nationally Reporting for this Programme Group

111	6	33		22	41	14		151	134	135		155	141	94		70	114	104		130	117	16		26	147	71		125	118	135		137	49	90
130	133	119		47	46	49		159	157	152		169	170	164		145	139	136		149	152	144		153	160	168		144	144	135		154	158	148



Trust ranking of each Programme Group for 2013-2015 is calculated by ordering the means of the Overall Satisfaction of all trusts reporting for that programme group with n>2 respondents. Quartiles have been calculated from means of the other trusts, meaning if a trust is in the top quartile then it is in the top 25% of trusts which deliver that programme group.

128	111	81		49	64	9		164	131	64		82	128	141		153	65	80		67	31		12	104	13		1		164	91	157		146	23	127		127	95	97
128	135	126		137	136	133		167	167	162		161	165	161		153	153	148		81	75		171	161	162		63		166	166	161		151	153	148		135	131	133



Patient Safety Concerns

These are the East of England Multiprofessional Deanery GMC NTS Patient Concerns for 2015 Collated by Local Education Provider (LEP) in March 2015. The data below has been broadly categorised to show the responses to the patient safety concerns question by LEP.

Areas of Concern identified	Understaffing	High Workload/ Work Intensity	Patient Care Provided incl assessment, treatment	Lack of Team work	Inadequate Handover	Capacity [shortage of Beds]	Confidence issues including lack of competence, induction; cross cover	Inadequate Supervision	Tension b/w education & service	Nursing Issues	Locum issues incl quality, availability	Clinical Processes incl equipment; IT	Intercultural communication issues incl lang	Non PSC - Ethical Issue	Total
BEDFORD & HERTFORDSHIRE															
Bedford Hospital NHS Trust N= F1 = 1	1	1													2
East and North Hertfordshire NHS Trust N= C/ST1 = 3; C/ST2 = 1; ST3= 1	2	1	1		2					1					7
Hertfordshire Partnership NHS Foundation Trust N= C/ST2 = 1; ST4+ = 1;									1			1			2
Luton and Dunstable Hospital NHS Foundation Trust N= F2 = 1 ; C/ST2 = 2; ST4+ = 3;	1		2	1		1	2								7
West Hertfordshire Hospitals NHS Trust N= F1 = 3; F2 = 1	2	1	1		2		2			3	2	1			14
TOTAL	6	3	4	1	4	1	4	0	1	4	2	2	0	0	32
ESSEX															
Basildon and Thurrock University Hospitals NHS Foundation Trust N= F1 = 1; C/ST1 = 1	2				1			1			1	1			6
Colchester Hospital University NHS Foundation Trust N= F1 = 2 ; C/ST1 = 2; ST4+ = 1 ;	3	1	2				1				1				8
Mid Essex Hospital Services NHS Trust															0
Southend University Hospital NHS Foundation Trust N= ST3= 1											1				1
South Essex Partnership University NHS Foundation Trust N= ST3= 1	1	1			1	1									4
The Princess Alexandra Hospital NHS Trust N= F1 = 1; C/ST1 = 1	1	2	1												4
NHS West Essex CCG - The Gold Street Surgery															0
TOTAL	7	4	3	0	2	1	1	1	0	0	3	1	0	0	23

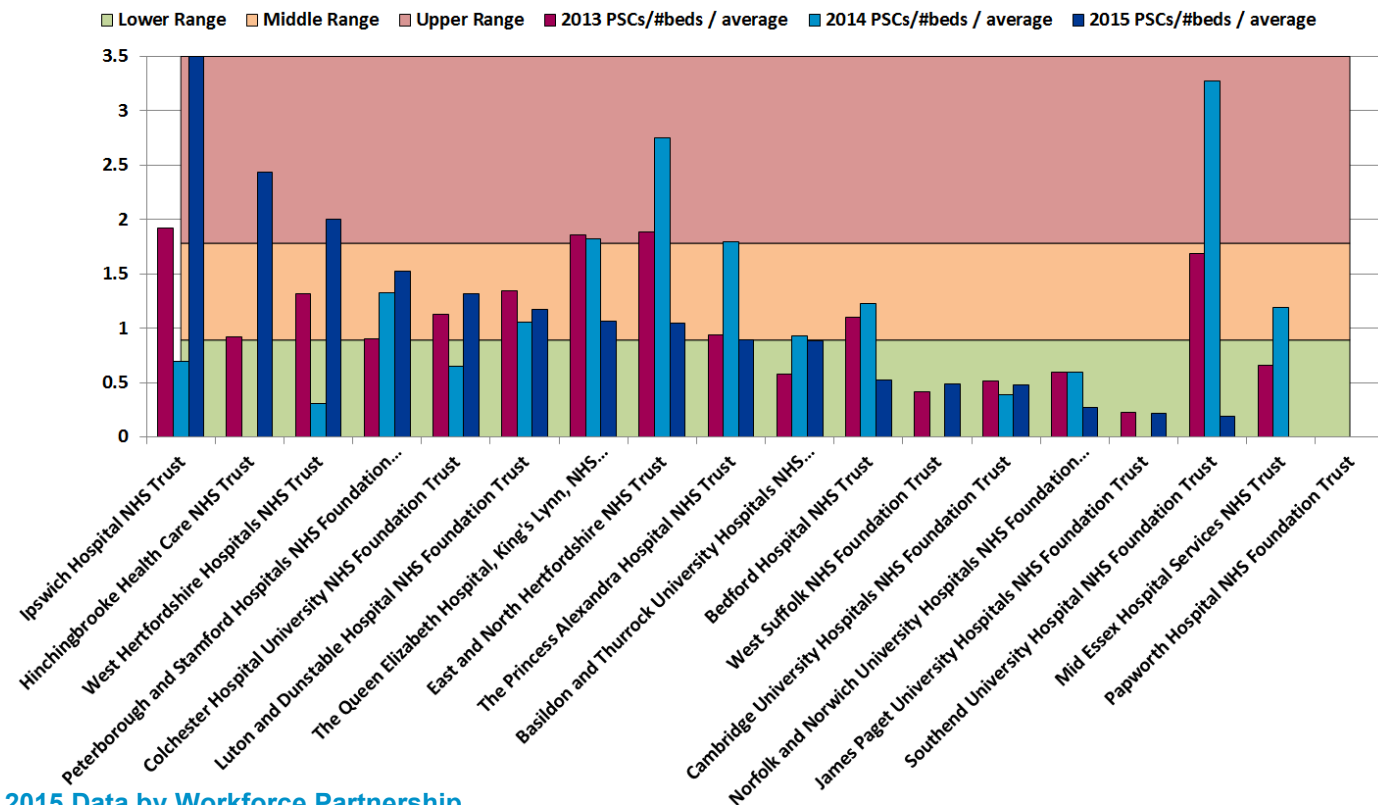
Patient Safety Concerns

These are the East of England Multiprofessional Deanery GMC NTS Patient Concerns for 2015 Collated by Local Education Provider (LEP) in March 2015. The data below has been broadly categorised to show the responses to the patient safety concerns question by LEP.

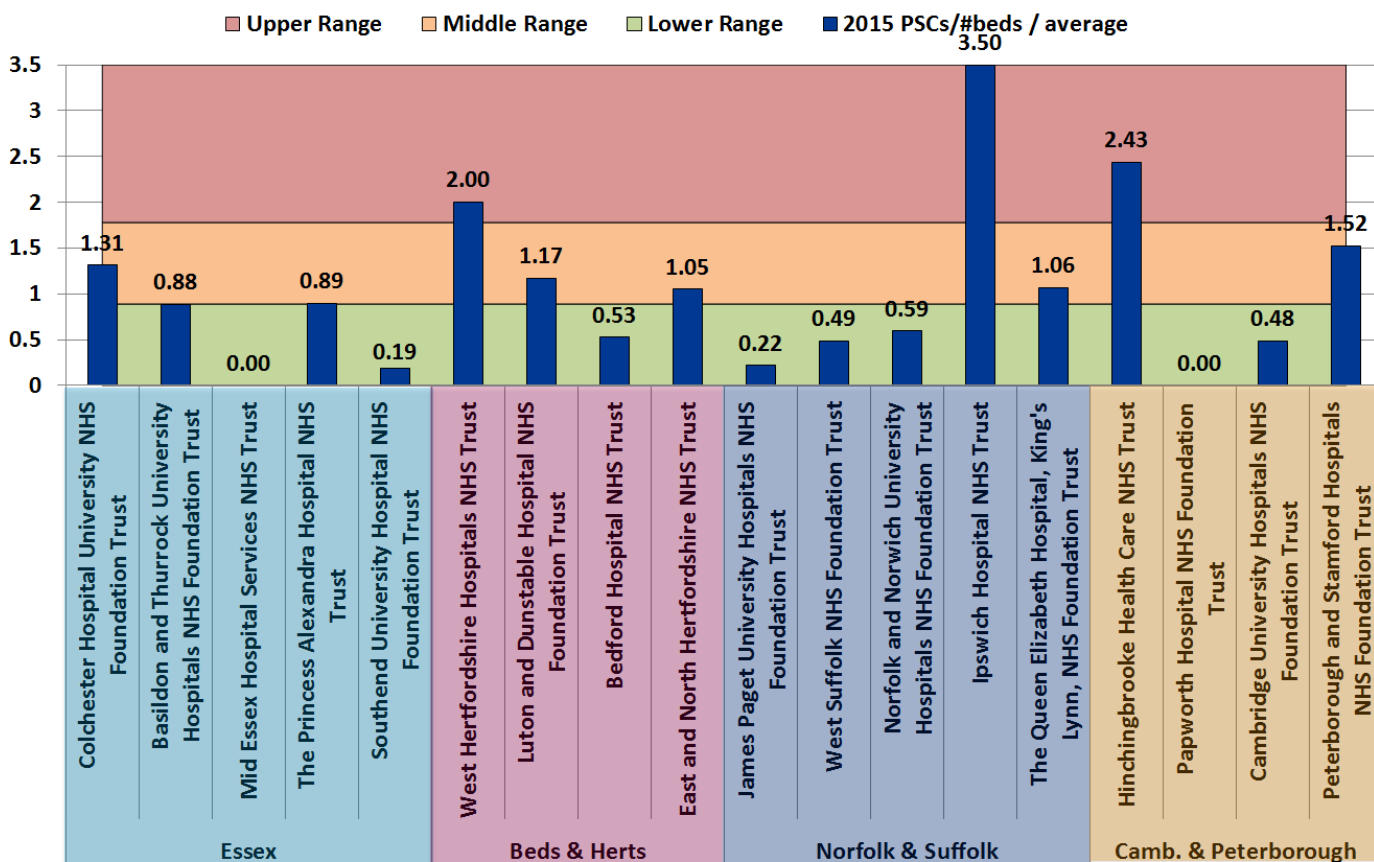
Areas of Concern identified	Understaffing	High Workload/ Work Intensity	Patient Care Provided Incl assessment, treatment	Lack of Team work	Inadequate Handover	Capacity [shortage of Beds]	Confidence Issues including lack of competence, induction; cross cover	Inadequate Supervision	Tension b/w education & service	Nursing Issues	Locum Issues incl quality, availability	Clinical Processes incl equipment; IT	Intercultural communication issues incl lang	Non PSC - Ethical Issue	Total
NORFOLK & SUFFOLK															
Ipswich Hospital NHS Trust N= F1 = 3; F2 = 1; ST4+ = 1;	5	2	3	2	2		2	2		1	1	1	1		22
James Paget University Hospitals NHS Foundation Trust N= ST4+ = 1;												1			1
Norfolk and Norwich University Hospitals NHS Foundation Trust N= F1 = 1; C/ST1 = 1	2		1												3
Norfolk and Suffolk NHS Foundation Trust N= C/ST2 = 1	1	1													2
The Queen Elizabeth Hospital, King's Lynn, NHS Foundation Trust N= F1 = 2; ST4+ = 1;	1						1			1	1		1		5
West Suffolk NHS Foundation Trust N= C/ST2 = 1	1		1												2
TOTAL	10	3	5	2	2	0	3	2	0	2	2	2	2	0	35
CAMBRIDGE & PETERBOROUGH															
Cambridge University Hospitals NHS Foundation Trust N= F2 = 1; ST4+ = 2;	1	1				1		1				1			5
Cambridgeshire and Peterborough NHS Foundation Trust N= C/ST1 = 2	1	2	2				1		1						7
Hinchingbrooke Health Care NHS Trust N= F1 = 2; F2 = 1	1	2	1						1	1					6
Papworth Hospital NHS Foundation Trust															0
Peterborough and Stamford Hospitals NHS Foundation Trust N= F1 = 3; C/ST1 = 1	2		2	1	1		1	1			1				9
TOTAL	5	5	5	1	1	1	2	2	2	1	1	1	0	0	27
OVERALL TOTAL N=	28	15	17	4	9	3	10	5	3	7	8	6	2	0	117

Acute Trust Patient Safety Concerns per bed

2013-2015 Trend Data



2015 Data by Workforce Partnership



Calculation: (2015 Patient Safety Concerns / # beds in trust) / average all EoE acute trusts. Ranges are calculated using the standard deviation, centred around the target, 0. The number of beds is the overnight and day only bed numbers taken from NHS England at <http://www.england.nhs.uk/statistics/statistical-work-areas/bed-availability-and-occupancy/>, Q4 data of applicable financial year.