

Ipswich Dental Foundation Training Scheme

Autumn Term Programme 2019 - 2020



Developing people
for health and
healthcare

www.hee.nhs.uk

Ipswich Postgraduate Medical and
Dental Education Centre





Ipswich Dental Foundation Training Scheme

Postgraduate Medical and Dental Education Centre

Ipswich Hospital NHS Trust, Heath Road,
Ipswich. IP4 5PD

☎ 01473 702561 📠 01473 702503

Postgraduate Dental Tutor	Mr. Jason Stokes BDS (Hons), MFGDP(UK)
Medical Education Manager	Mrs. Mary Burgess
Dental Administrator	Ms Katie Winearls
Dental Foundation Training, Midlands & East contact details:	DFT.ME@hee.nhs.uk

Training Programme Director Ipswich Scheme	Mr Jason Stokes BDS (Hons), MFGDP(UK) The Cathedral Street Dental Practice, 10-12 Cathedral Street, Norwich. NR1 1LX ☎ Practice: 01603 628963 Mobile: 07703 582210 📧 jason.stokes@hee.nhs.uk
---	---

Programme published by
Health Education England—East of England
2-4 Victoria House, Capital Park,
Fulbourn, Cambridge. CB21 5XB
☎ 01223 597768

Autumn Term

Venues and Subjects



Wednesday 4th September Introductions, Resilience & Audit

Ipswich Hospital Postgraduate Medical Education Centre

Friday 6th September Joint ES/FD skills session (hands-on)
The role of the GDC & Associate Dental Dean for Regional Trainee Support

Ipswich Hospital Postgraduate Medical Education Centre

Friday 13th September Communication Skills

Ipswich Hospital Postgraduate Medical Education Centre

Friday 20th September NHS Regulations

Ipswich Hospital Postgraduate Medical Education Centre

Friday 27th September Medico-legal Matters

Ipswich Hospital Postgraduate Medical Education Centre

Friday 4th October Treatment Planning
Quality Management

Ipswich Hospital Postgraduate Medical Education Centre

Friday 11th October Perio Management
Implants in Practice

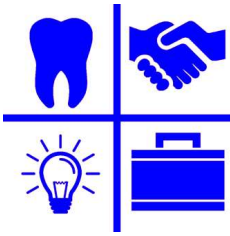
Ipswich Hospital Postgraduate Medical Education Centre

Friday 18th October Early Stage Review FD Interviews
(Interview time to be confirmed)

Ipswich Hospital Postgraduate Medical Education Centre

Friday 25th October Health & Safety

Ipswich Hospital Postgraduate Medical Education Centre



Autumn Term

Venues and Subjects

Friday 1st November

Oral Surgery (hands-on)



Ipswich Hospital Postgraduate Medical Education Centre

Friday 8th November

Endodontics (hands-on session)



Ipswich Hospital Postgraduate Medical Education Centre

Friday 15th November

Prosthetics



Ipswich Hospital Postgraduate Medical Education Centre

Friday 22nd November

Restorations (direct & indirect) (hands-on session)



Ipswich Hospital Postgraduate Medical Education Centre

Friday 29th November

Paediatrics

Orthodontic Assessment & Management



Ipswich Hospital Postgraduate Medical Education Centre

Friday 6th December

Normal day in practice



Ipswich Hospital Postgraduate Medical Education Centre

Friday 13th December

APLAN Milestone 1

Case Based Discussions*



Ipswich Hospital Postgraduate Medical Education Centre

***There will be an ES meeting at 12.45pm today**

lunch will be provided

During each day some time will be set aside for problem solving and discussion.



Morning Session

CPD = 3 Hrs

09.30 Introductions and Welcome

Jason Stokes

Ipswich DFT TPD

A welcome to the members of the Course and an introduction to the programme for the year. This is our first meeting together and is the time to get to know each other.

Objectives

This session will give all group members a chance to interact and get to know one another.

Learning Outcomes

At the end of the session we should all recognise the members of the group and their interests. We should also be able to characterise their Practice and Educational Supervisor.

DFT Competency Framework elements covered: Communication Domain. Section 14

In this section of the day we shall look at how Dental Foundation Training runs on a day to day basis. This is an opportunity to set out the ground rules for the year and to understand how we can make our group work well. The programme for the term and for the year can be discussed. We shall also look at the mechanisms for making claims for expenses. The various projects and presentations that will need to be completed during the year will be covered.

**GDC Development
Outcomes:
A,B,D**

Objectives

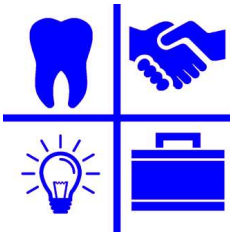
This session will illustrate the rules and obligations for all stakeholders involved with DFT.

Learning Outcomes

At the end of the session we should be able to define our responsibilities to the Dental Foundation scheme and the necessary tasks that will need to be completed to allow for a successful end to the Dental Foundation Training (DFT) Year.

**DFT Competency Framework elements covered: Management & Leadership Domain.
Section 19**

12.30 Lunch



Wednesday 4th September

Ipswich PGME

Afternoon Session

CPD = 3 Hrs

1.30

Resilience

Tong Nam

HEE Professional Support Unit

The BDA's recent study found that nearly half of dentists say stress in their job is exceeding their ability to cope. The most stressful aspects of their role are related to regulation and fear of litigation.



Objectives:

The speaker will -

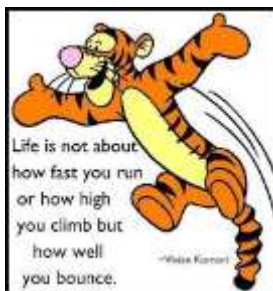
Explain the concept of stress and its impact upon us.

Describe how Foundation Dentists can recognize the causes of stress and the impact upon their performance, attitudes and behavior.

Demonstrate techniques to help Foundation Dentists manage stress in the workplace..

Learning Outcomes

Following this session: FDs will be able to:



- *Describe the impact of stress on their work & abilities.*
- *Recognize the causes of stress and the implications of not managing it appropriately.*
- *Demonstrate workplace techniques for stress reduction & management.*

DFT Competency Framework elements covered: Leadership & Management Domain 19

GDC Development
Outcomes:

A,B,D



Morning Session

CPD = 3 Hrs

09.30 Clinical Skills Refresher Session

This is a Joint Foundation Dentist & Educational Supervisor session.

On a day to day basis we perform irreversible hard tissue surgery on our patients teeth. This session will help us develop these vital practical skills.

Objectives:

This session will enable the Foundation Dentists to practice their restorative skills in a supportive and risk free environment.

Each FD & Educational Supervisor team will work together at one of the phantom head stations. There will be a list of restorative tasks that each FD will perform on the manikins plastic teeth. The Educational Supervisor will act as nurse & observer.

The Educational Supervisor will provide constructive feedback—that can be subsequently entered into the FD's PDP section of the ePDP to guide their early stage development.



Learning Outcomes

Following this session:

- Educational Supervisors will have a greater appreciation of their FDs skills base.*
- FDs will have had the opportunity to practice some less common restorative techniques*
- FDs and Educational Supervisors will be able to personalise the learning experience to tackle any weaknesses identified during the session.*



DFT Competency Framework elements covered: Clinical Domain 10, Communication 13

GDC Development Outcomes:

B, C

There will be an ES Meeting over the lunch break 12.30—2.00pm



Friday 6th September

Ipswich PGME

Afternoon Session

CPD = 3 Hrs

2.00

The role of the GDC & the Associate Dental Dean for Regional Trainee Support

General
Dental
Council

This session will explore the role of the General Dental Council. Our regulator is a vital part of our professional life and needs to be fully understood.

The General Dental Council (GDC) is the UK-wide statutory regulator of just over 100,000 members of the dental team, including approximately 40,000 dentists and 60,000 dental care professionals. The Dentists Act 1984 provides the legislative framework for their work. It currently gives the GDC powers to:

- grant registration only to those dental professionals who meet our requirements on education and training, health and good character. Only those who are registered with us can practice dentistry in the UK
- set standards for providers of dental education and training in the UK
- set standards of conduct, performance and ethics for the dental team
- investigate complaints against dental professionals and where appropriate take action through our fitness to practice process
- require dental professionals to keep their skills up to date through our continuing professional development requirements.



This session will also include input from Fleur Kellett the Associate Dental Dean for Regional Trainee Support for Health Education England Midlands & East. Fleur will explain her role in supporting trainees and helping them in reaching their potential & professional goals.

Objectives:

The speakers will:

- Describe the role of the GDC
- Explain the importance of professionalism
- Sign-post the support resources available through HEE

Learning Outcomes

Following this session the delegates will be able to:

- Describe the role of the GDC
- Explain the importance of professionalism
- Efficiently access the support resources available through HEE

DFT Competency Framework elements covered: Professionalism Domain 17, Management & Leadership 19, 20



Morning & Afternoon Sessions

CPD = 6 Hrs

9.30 Communication Skills

Jason Stokes

BDS Hons (Clinical Distinction) & DFT TPD

Why does communication matter? It is the basis of all human relationships. Without a range of communication techniques and approaches your effectiveness as a clinician and a team leader will be severely reduced. Unless you can empathise with others you will struggle to find a common ground to communicate.



Aims :

This session will look at communication, and its vital role in Dentist/Patient harmony and Team working.

Objectives:

During this session the speaker will endeavour to cover:

- Basic principles of communication
- How to avoid common errors
- 10 reasons why communication fails
- Managing miscommunication

Outcomes:

By the end of the session the delegates be able to:

- Recognise importance of non-verbal as well as verbal communication
- Describe the importance of listening
- Analyse the causes of communication failure
- Construct strategies to prevent miscommunication



GDC

Development

Outcomes:

A, B, D

DFT Competency Framework elements covered: Communication 12, 13, 14

Professionalism 18

Management & Leadership 22



Friday 20th September

Ipswich PGME

Morning & Afternoon Sessions

CPD = 6 Hrs

9.30

NHS Regulations—the Rules of the Game

Tom Norfolk

GDP, DFT Educational Supervisor, LPN Chair & Dental Practice Adviser



Tom is eminently placed to discuss the NHS Regulations with the DFT group. He is Chair of the Local Professional Network and Dental Practice Adviser to Health Education England. Tom is also an experienced Practice Owner and DFT Trainer.

In 2006 the Department of Health introduced a new set of regulations governing NHS Dentistry. These regulations are complex and still frequently misunderstood.



Objectives

This session aims to give an overview of the Dental Regulations—the current rules of the game for NHS dentistry, both in Personal Dental Services (PDS) and the General Dental Services (GDS)—and reinforce its importance and responsibilities.

Learning Outcomes

Following this session delegates will be able to:

- Describe the current NHS dental regulations
- Apply the regulations appropriately and effectively
- Recognise the consequences of not dealing with the regulations properly



DFT Competency Framework elements covered: Professionalism 15

Management & Leadership 19, 20, 21, 22

Reminder:
Please bring with you a copy of any NHS Regulations or Guidance that you have been given.



Morning & Afternoon Sessions

CPD = 6 Hrs

09.30 **Medio-legal Issues & Professional Protection**

Chris Roome
GDC Clinical Dental Adviser

This session will incorporate presentations from Chris Roome (Clinical Dental Adviser at the GDC) covering a variety of topics related to record keeping, medico legal issues etc that have been shown to be of particular relevance to new graduates. Chris will seek to highlight the professional pitfalls that can lie in wait for unwary FDs.



Objectives

The speaker will:

- Describe the current medico-legal environment—and how this impinges on our professional lives.
- Demonstrate the risks that may result in medico-legal problems.
- Illustrate strategies to avoid medico-legal pitfalls.

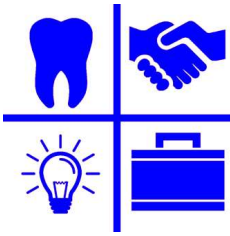


Learning Outcomes

Following this session delegates will be able to:

- *Describe the current medico-legal environment—and how this impinges on their professional lives.*
- *Identify risks that may result in medico-legal problems.*
- *Design strategies to avoid medico-legal pitfalls.*

DFT Competency Framework elements covered: Professionalism 15, 16, 17, 18. Management & Leadership 19, 20, 21



Friday 4th October

Ipswich PGME

Morning & Afternoon Sessions

CPD = 6 Hrs

9.30

Treatment Planning & Quality Management

Nick Lamb

GDP & Dental Professional Adviser to NHSE



This session is designed to explore the structure behind efficient and effective treatment planning. As a professional dentist it is vital that we provide our patients with optimal treatment but also follow the guidance and regulations that support the provision of primary care dentistry in England.

Nick Lamb works for NHSE and is an experienced and skilled GDP. He will demonstrate that the advice and guidance provided to us can enhance the provision of dental care for our patients.



Objectives

The speaker will:

- Describe the structures and processes behind efficient dental treatment planning
- Describe the range of publications that primary care dentists should apply to their treatment.
- Explain the role of guidance in enhancing treatment planning efficiency.



Learning Outcomes

Following this session the participants will be able to :

- Explain the structures and processes behind efficient dental treatment planning
- Describe the range of publications that primary care dentists should apply to their treatment.
- Apply current guidance to dental treatment planning.

GDC Development Outcomes:

A, B, C, D

DFT Competency Framework elements covered: Clinical 2. Management & Leadership 20,

Friday 11th October

Ipswich PGME



What are Dental Milestones ?

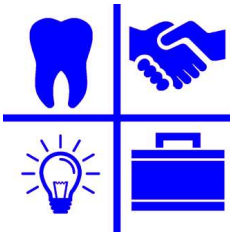
- Dental Milestones describe an assessment and learning process that occurs throughout the DFT year
- At key stages throughout the year Foundation Dentists are asked to produce clinical case reports / case presentations which increase in complexity
- Clinical Case reports are Peer Reviewed and Peer Assessed as part of the formative nature of DFT,
- Formative assessments are to help participants learn, the information gathered through Milestones will augment and inform the IRCP and RCP processes which ensure Satisfactory Completion of DFT

What is the purpose of Milestones ?

- Foundation Dentists will present to their own study three clinical cases, Milestone 1 (MS1) will be Peer Reviewed only. MS2 and MS3 will be Peer Reviewed and Peer Assessed.
- Taking part in Peer Review and Assessment has been shown from wider research and specific dental research to facilitate the following
 - ⇒ **Learning**
 - ⇒ **Self-Assessment Skills**
 - ⇒ **Reflection**
 - ⇒ **Insight**

APLAN Overview

- APLAN (Anonymous Peer Learning & Assessment Network) is an online tool designed to facilitate the anonymous distribution and assessment of Milestone 2 & 3 clinical cases.
- APLAN distributes cases both anonymously and randomly to different DFT study groups within each local office.
- Both Foundation Dentists and Educational Supervisors will provide feedback on at least three clinical cases distributed to them via APLAN.
- APLAN will then be used by TPDs to inform the Peer Review process of clinical case presentations and allow feedback generated to be evaluated for accuracy and usefulness.



Friday 11th October

Ipswich PGME

Morning & Afternoon Sessions

CPD = 6 Hrs

09.30 **Dental Milestone 1 (MS 1)** Ipswich DFT Scheme

General Guidance for Clinical Case

- Ensure you have written patient consent for the use of photographs taken
- Start identifying clinical cases for MS2 and MS3 ASAP, it is recommended to have a few cases in case of patient non-attendance
- MS1 is a presentation to your own study group only, you will need to prepare a **PowerPoint presentation** for this day.
- MS2 and MS3 will require the clinical case to be uploaded to APLAN in addition to the PowerPoint presentation
- Familiarise with the criteria being used for the assessment to help with your case write up on APLAN

Milestone 1

- MS1 is a clinical case that demonstrates treatment planning skills, it can be based around an emergency **dental appointment** with relevant treatment and long term plans or a treatment plan for a patient with dental disease.
- MS1 should be presented through **PowerPoint** to the FDs own study group for Peer Review by attending FDs and ESs.
- The study groups TPD will provide formative feedback on this case, highlighting any learning needs demonstrated by the clinical case and presentation.
- MS1 occurs at the time of the Early Stage Review within the portfolio.

DFT Competency Framework elements covered: Clinical 1, 2, 3, 4

Case Based Discussions

For the rest of this session the FDs will conduct Case Based Discussions with a range of different Educational Supervisors. Each FD will need to bring 3 different sets of records and artefacts concerning patients they have treated. They will engage in a Case Based Discussion with 3 different Educational Supervisors.



Early Stage Review (ESR)—one to one interview (FDs and TPD)

Early Stage Review of Dental Foundation Training

Some areas were not identifying FDs with significant development needs until the end of first term.

This process was developed to get early identification of trainees with additional educational needs and or additional pastoral support.

At week 6, Educational Supervisors (ES), Foundation Dentists (FDs) and Training Programme Directors (TPDs) are asked to complete a template. These also include sections on areas of notable practice and areas of issues and concerns.

The ESR examines the curriculum domains, highlighting areas of notable practice and areas of concern.

Two “DOPSS (Direct Observation of Procedural Skills)” are carried out in the first 4 weeks.

A DOPS is a snapshot assessment at that point in time whereas an ADEPT is about how a FD is progressing compared with the completion level of DFT.

The ESR also reviews significant events and sick days.

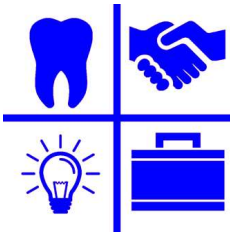
The ES has a 1:1 with the FD after which ES and FD agree on action plan.

The TPD completes their report independently. Again this reviews the same curriculum domains by reviewing the EPDP and their own observation from study days. They highlight both areas of notable practice and areas of concern.

Today—at the 6 week stage there will be:

- 1:1 review between the TPD and FD
- Normally, no longer than 15 minutes
- The TPD reviews – Educational Supervisor (Trainer) report, FD report and TPD report to look for themes and trends.
- A discrepancy between Educational Supervisor evaluation and Trainee evaluation may point to confidence, competence or insight issues.
- TPD reviews ES action plan and adapts it if necessary
- Actions need to have SMART goals (Specific, Measurable, Achievable, Realistic, Time specific)
- Signed by TPD and FD
- Outcome shared with Trainer
- A minority (1-2 per scheme) will need to be notified to Associate Deans with a follow up review.

Each FD will be supplied with a specific time for their TPD interview



Friday 18th October

Ipswich PGME

Early Stage Review (ESR)—one to one interview (FDs and TPD)

Early Stage Review of Dental Foundation Training

Some areas were not identifying FDs with significant development needs until the end of first term.

This process was developed to get early identification of trainees with additional educational needs and or additional pastoral support.

At week 6, Educational Supervisors (ES), Foundation Dentists (FDs) and Training Programme Directors (TPDs) are asked to complete a template. These also include sections on areas of notable practice and areas of issues and concerns.

The ESR examines the curriculum domains, highlighting areas of notable practice and areas of concern.

Two “DOPSS (Direct Observation of Procedural Skills)” are carried out in the first 4 weeks.

A DOPS is a snapshot assessment at that point in time whereas an ADEPT is about how a FD is progressing compared with the completion level of DFT.

The ESR also reviews significant events and sick days.

The ES has a 1:1 with the FD after which ES and FD agree on action plan.

The TPD completes their report independently. Again this reviews the same curriculum domains by reviewing the EPDP and their own observation from study days. They highlight both areas of notable practice and areas of concern.

Today—at the 6 week stage there will be:

- 1:1 review between the TPD and FD
- Normally, no longer than 15 minutes
- The TPD reviews – Educational Supervisor (Trainer) report, FD report and TPD report to look for themes and trends.
- A discrepancy between Educational Supervisor evaluation and Trainee evaluation may point to confidence, competence or insight issues.
- TPD reviews ES action plan and adapts it if necessary
- Actions need to have SMART goals (Specific, Measurable, Achievable, Realistic, Time specific)
- Signed by TPD and FD
- Outcome shared with Trainer
- A minority (1-2 per scheme) will need to be notified to Associate Deans with a follow up review.

Each FD will be supplied with a specific time for their TPD interview



Morning & Afternoon Sessions

CPD = 6 Hrs

09.00 Health & Safety in General Dental Practice

Jane Bonehill
DenMed Training

Jane has been a member of the dental team for more than thirty years, starting her career in general dental practice then moving into dental training and education.

Health & Safety Legislation is a vital (if occasionally dry!) subject that directly impinges on all aspects of primary dental care. Jane will bring this subject to life—and may help save yours!

Today's session will aid you greatly in the production of your Foundation Skills Project.

Objectives

The speaker will:

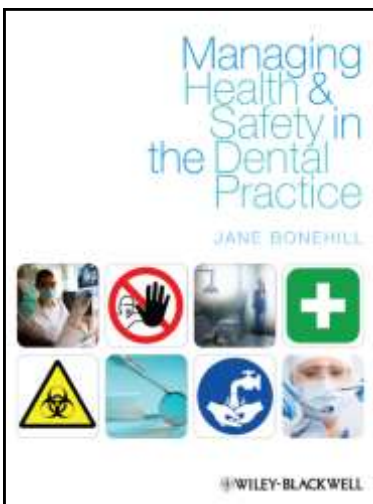
- Describe the importance of Health & Safety in the workplace.
- Explain Health and Safety legislation and how it applies to General Dental Practice.
- Describe how Health & Safety processes can enhance safety of patients and staff alike.

Learning Outcomes

Following this session delegates will be able to:

- Describe the importance of Health & Safety in the workplace.
- Apply Health and Safety to General Dental Practice.
- Use Health & Safety processes to enhance safety of patients and staff alike.

DFT Competency Framework elements covered: Management & Leadership 20



GDC
Development
Outcomes:
B, D

NB. This extended day will furnish the delegates with a certificated qualification concerning the Management of Health & Safety in the Dental Practice setting.



Friday 1st November

Ipswich PGME

Morning & Afternoon Sessions

CPD = 6 Hrs

9.30 Oral Surgery in General Practice (Hands-on)

Rachel Lamb & Kate Rustage
Specialist Practitioners in Oral Surgery

Today's sessions are designed to improve the practical surgical skills of the FDs. Local practitioners with an interest in Oral Surgery — Rachel Lamb & Kate Rustage — will demonstrate some of the surgical techniques practitioners should be comfortable to tackle in General Practice. This session will use pigs heads to simulate the normal clinic environment .



Objectives

The speakers will:

- *Demonstrate appropriate surgical assessment*
- *Demonstrate Flap design & soft tissue management*
- *Demonstrate effective suturing techniques*
- *Demonstrate bone removal & tooth delivery*

Learning Outcomes

Following this session delegates will be able to:

- *Describe appropriate surgical assessment*
- *Demonstrate Flap design & soft tissue management*
- *Apply effective suturing techniques*
- *Demonstrate bone removal & tooth delivery*



DFT Competency Framework elements covered: Clinical 2, 7

Note:

This session will use Pigs heads as an educational tool. Please inform Jason Stokes if this poses any issues.

GDC
Development
Outcomes:
A, C



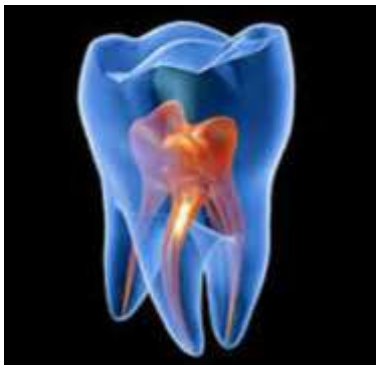
Morning & Afternoon Sessions

CPD = 6 Hrs

9.30 Endodontics in General Practice (Hands-on)

Shashi Mishra
Endodontist Specialist

Endodontist Specialist Shashi Mishra will seek to expand on your knowledge and skills associated with endodontics.



He will demonstrate the theory and use of Modern endodontic systems. Shashi will also aim to help you with cases with more complex endodontic anatomy.

Objectives

The speaker will:

- Describe modern endodontic techniques
- Demonstrate the safe use of modern endodontic techniques
- Explain how to treat teeth with challenging anatomy

Learning Outcomes

Following this session delegates will be able to:

- Treatment plan more complex endodontic procedures
- Safely use of modern endodontic systems
- Assess and attempt to endodontically treat teeth with challenging anatomy



**DFT Competency Framework elements covered:
Clinical 2, 10**

THINGS TO BRING

1. Several extracted, pre-extirpated teeth
2. Extracted previously RCT'd teeth

GDC Development Outcomes:

A, C



Friday 15th November

Ipswich PGME

Morning & Afternoon Sessions

CPD = 6 Hrs

09.30 **Prosthetics (hands-on)**

Mark Davis

Educational Supervisor & General Dental Practitioner

During this session Mark will aim to explore various aspects of Full & Partial Denture Planning & Provision. This will include:



- anatomy & tooth suitability
- patient selection
- treatment planning
- denture design, impression taking & bite registration
- lab liaison
- Maintenance
- modifications & additions
- when to remake

Coupled with this - Mark will aim to discuss common denture problems & solutions.



Objectives

This speaker will:

- demonstrate efficient patient examination and selection
- Describe effective partial and full denture design
- Demonstrate the principles and theory of good impression techniques

Learning Outcomes

Following this session Foundation Dentists will be able to:

- take successful impressions
- record the bite accurately
- set up the occlusion in full & partial dentures

**GDC Development
Outcomes:**

A, C

DFT Competency Framework elements covered: Clinical 1, 2, 11



Morning & Afternoon Sessions

CPD = 6 Hrs

9.30

Direct & Indirect Restorations in General Dental Practice

Mohammed Ali Chohan and Jinesh Vaghela

GDPs & DFT Educational Supervisors



Jinesh and Ali are passionate about caries management and are fond believers of MID. Jinesh read his MSc in Restorative Dental Practice at the Eastman Dental Institute.

They have been teaching together for 8 years and this topic in particular for 6 years and hold a passion for teaching.

The aim of this course is to review different types of anterior and posterior extra-coronal restorations including indications, contraindications, materials and techniques

Objectives

The speakers will:

- Demonstration of designs for different types of restoration
- Prepare an anterior crown using a reduction guide
- Prepare a posterior crown/onlay
- Discuss and prepare a suitable temporary restoration



Learning Outcomes

Following this session delegates will be able to:

- *Describe designs for a variety of restorations*
- *Perform an anterior and posterior crown preparation*
- *Evaluate the methods for temporizing extra-coronal restorations*

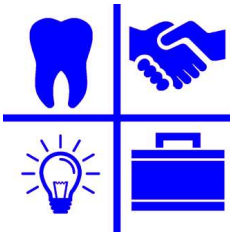
DFT Competency Framework elements covered: Clinical Domain. 1, 2, 10

GDC

Development

Outcomes:

A, C



Morning & Afternoon Sessions

CPD = 6 Hrs

9.30 Paediatric Dentistry & Orthodontics

Callum Limer

Community Dental Services

This session will look at the best ways of managing the Child Patient and their developing dentition. It will cover prevention, education, management, and assessment of the dental development. Callum will discuss normal dental development and what, when, where and why to refer.



Callum will explore the particular challenges around maintaining the oral health of child patients. He will also describe the types of orthodontic issues that can be successfully treated in general practice. He will explore assessing cases and discussing what cases we can treat in general practice.



Objectives

The speaker will:

- Explain the specific requirements of the child patient.
- Describe tooth development and what you are likely to see in general practice.
- Demonstrate the assessment of cases and subsequent treatment planning.

Learning Outcomes

By the end of this session delegates will be able to:

- Recognise health & pathology in the child patient.
- Describe and assess dental disease & malocclusion
- Demonstrate how, when and why to refer.
- Assess, critique and formulate treatment plans for different dental conditions.

DFT Competency Framework elements covered: Clinical 1, 2, 3, 4, 5, 7, 9, 10

GDC

Development

Outcomes:

A, C



Morning Session

CPD = 3 Hrs

9.30 Periodontology in General Practice

Aaron Lopez-Lago Garcia & Imran Sharif
Local Specialist Practitioners

Objectives

This session with local periodontists Aaron Lopez-Lago Garcia & Imran Sharif—will help to highlight the most effective treatment planning and management strategies for our patients with a periodontal problem.

Aaron & Imran will seek to identify some of the risk factors and signs that can assist with correct assessment of vulnerable patients—and discuss the most up to date strategies of practical management.

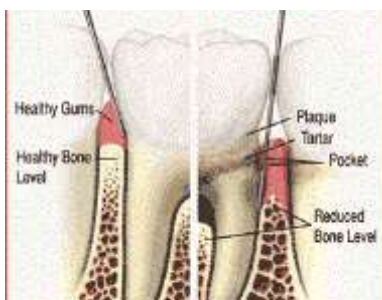
They will also explore some of the common pitfalls that unwary GPs can encounter when dealing with Chronic Adult Periodontal disease in all its various forms.



Learning Outcomes

Following this session the participants should be able to :

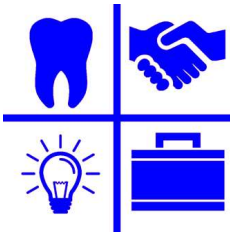
- Design an effective screening programme for periodontal disease
- Recognise the aetiology and risk factors of periodontal disease
- Construct effective treatment plans for their patients
- Recognise when it is best to refer patients for specialist care



GDC Development Outcomes:

A, C

DFT Competency Framework elements covered: Clinical 1, 2, 3, 6, 7, 8



Afternoon Session

CPD = 3 Hrs

14.00 **Implants in General Practice**

Aaron Lopez-Lago Garcia & Imran Sharif

Local Specialist Practitioners

Objectives

This session with local periodontists Aaron Lopez-Lago Garcia & Imran Sharif—will help to highlight the most important considerations when interacting with patients who may benefit from implants.

Aaron & Imran will seek to identify the information that needs to be considered when discussing the feasibility and suitability of restorative treatments involving implants.

They will also explore some of the common pitfalls that unwary GDPs can encounter when endeavoring to incorporate implants into their treatment plans.

Aaron & Imran will discuss the role of implants in modern primary care. They will discuss the need to consider this type of restoration and the factors that should be considered when communicating with patients and referring for treatment.



Learning Outcomes

Following this session the participants should be able to :

- Recognise the clinical situations where implants would be a valid treatment option
- Construct effective treatment plans for their patients
- Recognise when it is best to refer patients for specialist care



GDC Development Outcomes:

A, C

DFT Competency Framework elements covered: Clinical 1, 2, 3, 6, 7, 8

PML Evidence

Sessional Content for e-Portfolio



	Introduction & resilience	Skills Refresher	The Role of the GDC	HEE Trainee Support	Communication Skills	NHS Regulations	Treatment Planning & Quality Management
Professionalism							
Appraisal	✓	✓		✓			✓
Clinical audit and peer review		✓	✓	✓		✓	✓
Confidentiality	✓		✓	✓		✓	
Ethical behaviour	✓		✓	✓	✓	✓	✓
Critical evaluation	✓	✓	✓	✓	✓	✓	✓
Decision making	✓	✓	✓	✓		✓	✓
GDC Scope of Practice			✓				
Whistleblowing	✓		✓	✓		✓	
Management of difficult patients			✓		✓		
Patient safety	✓	✓	✓	✓	✓	✓	✓
Self-awareness	✓	✓	✓	✓	✓	✓	✓
Professionalism and Management							
Basic Life Support training							
Consent			✓		✓	✓	✓
Equality & Diversity	✓		✓	✓			
GDC Standards	✓		✓		✓	✓	
NHS complaints procedure			✓				
Referring patients						✓	✓
Management							
COSHH regulations							
Dental equipment selection, care and maintenance		✓					
Data Protection			✓				
Employment contracts/associate agreements for dentists				✓			
Employment Law basics				✓			
Finance	✓					✓	
Health & Safety requirements in dentistry							
Infection control procedures							
NHS prescribing						✓	✓
NHS Rules & Regulations in Dentistry						✓	✓
Prescribing, directing, taking, processing and interpreting radiographs						✓	✓
Range and scope of NHS dental care			✓			✓	✓
Record keeping			✓			✓	✓
Use of emergency drugs							
Information Governance							
Safeguarding Children and Adults							
Leadership							
Facilitating learning in others	✓	✓				✓	✓
Quality management and improvement	✓	✓	✓	✓	✓	✓	✓
Role model	✓	✓	✓	✓	✓	✓	✓
Teamwork	✓	✓	✓	✓	✓	✓	✓



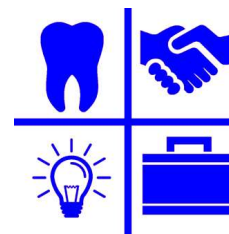
PML Evidence

Sessional Content for e-Portfolio

Periodontology & Implants	Health & Safety	Oral Surgery	Endodontics	Prosthetics	Direct & Indirect Restorations	Orthodontics	Paediatric Care &
	✓						
	✓						
	✓						
✓	✓	✓	✓	✓	✓	✓	✓
✓	✓	✓	✓	✓	✓	✓	✓
	✓						
✓		✓	✓	✓	✓	✓	✓
✓	✓	✓	✓	✓	✓	✓	✓
✓	✓	✓	✓	✓	✓	✓	✓
✓		✓	✓	✓	✓	✓	✓
✓	✓	✓	✓	✓	✓	✓	✓
✓	✓	✓	✓	✓	✓	✓	✓
	✓						
✓	✓	✓	✓	✓	✓	✓	✓

Speakers

Autumn Term 2018 - 2019



Chris Roome—GDC

General Dental Council

37 Wimpole Street
London,

W1G 8DQ



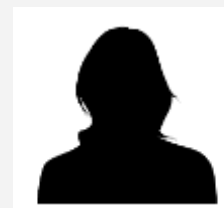
Tom Norfolk

Bank Buildings Dental Surgery,
5 Bank Buildings,
Sudbury, CO10 2SX
Tel 01787 881100



Kate Rustage

86 Crostwick Lane,
Spixworth ,
Norwich,
NR10 3AF
Tel 01603 898414



Shashi Mishra

Beechcroft
Gipsy Lane
Knebworth
Hertfordshire
SG3 6DJ

Tel 01438 813766



Nick Lamb

Island House Dental Care
5 Quay Point, Station Road
Woodbridge
Suffolk
IP12 4AL
Tel 01394 388008



Mohammed Ali Chohan

Cobbins Brook Smile Clinic
28 Honey Lane
Waltham Abbey
Essex EN9 3BT
Tel 01992 711199
www.cobbinssmile.com





Speakers

Autumn Term 2018 - 2019



Jinesh Vaghela

Cobbin's Brook Smile Clinic
28 Honey Lane
Waltham Abbey
Essex EN9 3BT
Tel 01992 711199
www.cobbinssmile.com



Aaron Lopez-Lago

Norfolk Dental Specialists
1 Victoria Street
Norwich
NR1 3QX
Tel 01603 632525



Jane Bonehill

DenMed
115 Welford Road,
Shirley, Solihull
West Midlands
B90 3HT



Rachel Lamb

Island House Dental Care
5 Quay Point, Station Road
Woodbridge
Suffolk
IP12 4AL
Tel 01394 388008

Calendar 2019 -2020



2019

Wednesday 4th September

First Day of Autumn Term

Introduction

Friday 6th September

Clinical Skills Refresher

Fridays 18th October

Early Stage Review—Ipswich Hospital

Friday 13th December

Last Day of Autumn Term

2020

3rd to 31st January

Practice Mid Year Visits - dates and time to be notified

Friday 7th February

First Day of Spring Term

Friday 27th March

Last day of Spring Term

Educational Supervisors at Ipswich Hospital all day

Friday 24th April

First Day of Summer Term

Friday 3rd July

Educational Supervisors present all day from 9.30am
(ES meeting 12.45pm)

Friday 10th July

Last Day of Summer Term

Regional Celebration Event