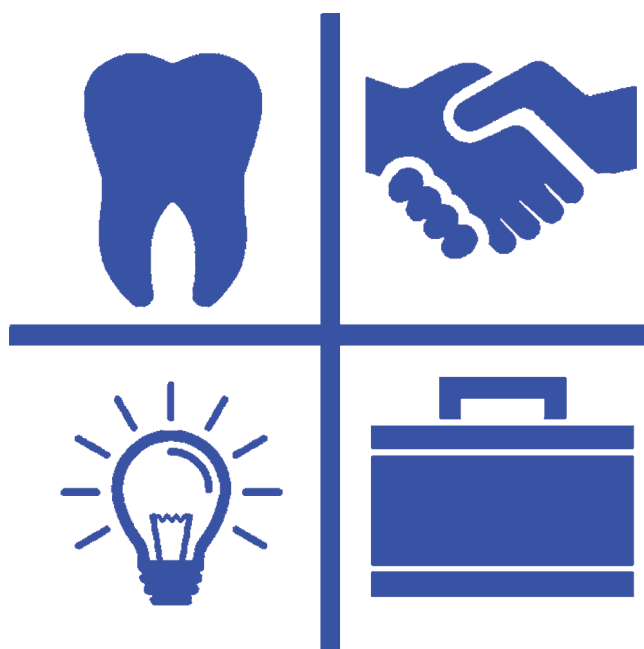


# Hertfordshire and West Essex Dental Foundation Training Scheme



**Spring and Summer Term Programme 2023-2024**





# Hertfordshire and West Essex Dental Foundation Training Scheme

## Lister Hospital Postgraduate Centre

PGMC Lister Hospital, Corey's Mill Lane, Stevenage, SG1 4AG

Tel: 01438 284923

## East of England Region

Regional Postgraduate Dental Dean

**Malcolm Brady**

Regional Deputy Postgraduate Dental Dean, Early Years

**Jason Stokes**

Regional Dental Account Manager

**Patti Bradshaw**

Regional Dental Faculty Support Officer

**Peta Wright**

Regional Faculty Support Administrator

**Charlene Wright**

Postgraduate Centre Manager

Scheme Administrator

**Justin Chitre**

Training Programme Director

**Peter Russell**

BDS u.lond PGCert Dent Ed

07411 793026

Peter.Russell11@nhs.net



# Hertfordshire and West Essex Dental Foundation Training Scheme

## Index to Spring and Summer Term Programme

East of England Region	2
Index	3
List of Study Days for Spring and Summer Term	4
Details of Study Days	7



# Spring and Summer Term

## Venues and Subjects

<b>Friday 7th February</b>	Milestone 2 Presentation	<i>Lister PGMC</i>
<b>Friday 1st March</b>	Denature Masterclass Part 1	<i>Online</i>
<b>Friday 15th March</b>	Denture Masterclass Part 2	<i>Lister PGMC</i>
<b>Friday 22nd March</b>	Endodontic Day 2	<i>Baldock</i>
<b>Tuesday 23rd April</b>	Hands on Oral Surgery	<i>Luton &amp; Dunstable Hospital</i>
<b>Thursday 25th April</b>	Composite Hands On day	<i>GC Dental Newport Pagnell</i>
<b>Friday 10th May</b>	Implants in Practice Occlusion	<i>Lister PGMC</i>
<b>Friday 17th May</b>	Dementia in the Dental Setting Restorative Peer Review	<i>Lister PGMC</i>
<b>Thursday 23rd May</b>	Beyond Foundation day 1	<i>Kings House, Bedford</i>
<b>Friday 24th May</b>	Beyond foundation day 2	<i>Bedford PGMC</i>
<b>Friday 31st May</b>	Toothwear & Advanced Restorations	<i>Lister PGMC</i>

<b>Thursday 20th June</b>	Audit Presentations	<i>Lister PGMC</i>
<b>Friday 28th June</b>	Milestone 3 Presentations	<i>Lister PGMC</i>
<b>Friday 12th July</b>	EoE Showcase Event	<i>Hilton Cambridge City Centre</i>

## Important Dates and Deadlines

ALL e-Learning Complete.	1st January 2024
Practice Visits – virtual or in person.	Jan 6th - Feb 25th 2024
Practice swaps	January 2024
Milestone 2 – APLAN submission closes	Monday 15th January 2024
Milestone 2 - APLAN review submission closes	Monday 29th January 2024
Milestone 2 Presentations	Friday 9th February 2024
!RCP	Friday 16th February 2024
EASTER - No Study Day	Friday 29th March 2024
Audit complete	31st May 2024
Milestone 3 – APLAN submission closes	Friday 3rd June
Milestone 3 - APLAN review submission closes	Friday 16th June
Milestone 3 Presentation Day	Friday 26th June 2024
Celebration Day regional Meeting	Friday 12th July 2024
FRCP	Friday 26th July





# Friday 7th February

Lister PGMC

## Day Session

09.30

### Milestone 2 Presentation

CPD Hrs = 6

**Peter Russell + 2 ESs**

TPD

*This session will be used for Foundation Dentists to present their Milestone 2 case.*

#### Objectives

- "Knowledge and experience of the power of self and peer reflection in personal development."
- Improvement in the provision of patient care through use of reflection, analysis and planning.

#### Learning Content

- Assess and treatment plan appropriately.
- Reflect regarding their own clinical work and if required use personal learning needs to improve outcomes for patients.

**GDC Outcomes: A C D**



16.30

End



Friday 1st March

Online

## Afternoon Session

13:30

### Denature Masterclass Part 1

CPD Hrs = 3

#### Dr Upen Patel

Clinical Lecturer Birmingham Dental Hospital



*To provide a solid set of principles in complete denture fabrication focusing on correct diagnosis, impressions, bite registration trial insertion and definitive insertion with aftercare.*

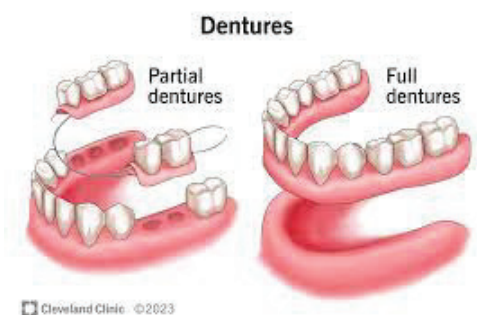
#### Objectives

- Define the principles of provision of complete dentures in a general dental practice setting.
- Describe the planning, design prescription and delivery of effective complete prostheses, including communication with the dental laboratory team, to provide effective patient care.
- Identify the methods of obtaining and interpreting diagnostic casts and gathering relevant information in formulating a diagnosis, prognosis and treatment plan for patients requiring complete dentures.

#### Learning Content

- Recognise key features in planning for complete dentures and demonstrate the ability for trouble shooting as required.
- Can demonstrate how to take excellent impressions for complete dentures and their importance (based on the initial diagnosis of each edentulous case).
- Perform accurately inter-arch relationship records and know when to take a facebow record, including assessment of tooth shape and size.

#### GDC Outcomes: A C



Cleveland Clinic ©2023

16:30

End





# Friday 15th March

Lister PGMC, Stevenage

## Day Session

Empty

### Denture Masterclass Part 2

CPD Hrs = 6

#### Dr Upen Patel

Clinical Lecturer Birmingham Dental Hospital

*To provide a solid set of principles in complete denture fabrication focusing on correct diagnosis, impressions, bite registration trial insertion and definitive insertion with aftercare.*

#### Objectives

- Define the principles of provision of complete dentures in a general dental practice setting.
- Describe the planning, design prescription and delivery of effective complete prostheses, including communication with the dental laboratory team, to provide effective patient care.
- Identify the methods of obtaining and interpreting diagnostic casts and gathering relevant information in formulating a diagnosis, prognosis and treatment plan for patients requiring complete dentures.

+ -

Hide buttons

#### Learning Content

- Recognise key features in planning for complete dentures and demonstrate the ability for trouble shooting as required.
- Can demonstrate how to take excellent impressions for complete dentures and their importance (based on the initial diagnosis of each edentulous case).
- Perform accurately inter-arch relationship records and know when to take a facebow record, including assessment of tooth shape and size.

+ -

Hide buttons

#### GDC Outcomes: A C

No Objectives

Hide buttons

No Learning

No Break

Add Break

Add Pictures

Add Callouts



16:30

End



# Friday 22nd March

Baldock

## Day Session

09.30

### Endodontic Day 2

CPD Hrs = 6

#### Shashi Mishra

Specialist Endodontist



To give Foundation Dentists greater confidence, knowledge and technical ability in diagnosis and treatment of apical and pulpal pathology, and understand modern concepts in its prevention. To allow Foundation Dentists to understand the factors involved in restoring the endodontically treated tooth.

#### Objectives

- Review current concepts in the prevention of apical and pulpal pathology.
- Describe the pathophysiology of the pulp-dentine complex and the symptoms of pulp-dentine pathology.
- Undertake practical training to have a greater knowledge of the principles of endodontic access, canal preparation, canal irrigation, obturation and the restoration of the endodontically treated tooth.

+ -

Hide buttons

#### Learning Content

- Demonstrate an enhanced knowledge and ability to manage patients with endodontic problems.
- Demonstrate greater skill in the treatment of endodontically involved teeth.
- Evaluate how to restore the endodontically treated tooth.

+ -

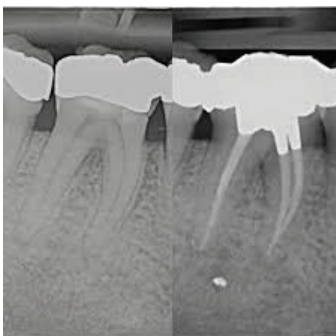
Hide buttons

#### GDC Outcomes: A C

No Objectives

Hide buttons

No Learning



16.30

End

No Break

Add Break

Add Pictures

Add Callouts



# Tuesday 23rd April

Luton & Dunstable Hospital

## Day Session

09:30

### Hands on Oral Surgery

CPD Hrs = 3

#### Dr Rob Bunyan

Consultant OMFS Luton & Dunstable Hospital

*Allow participants to become more competent in oral surgery procedures undertaken in primary care, including the use of flaps and bone removal where appropriate. This is a hands on Pigs Head session*

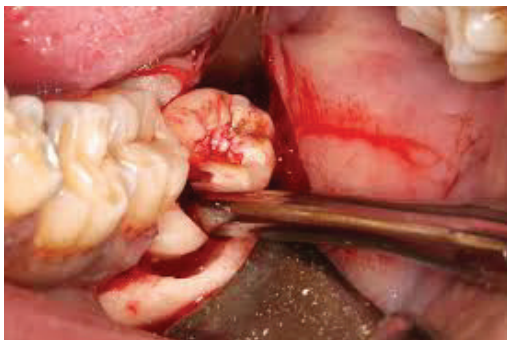


#### Objectives

- Explain the importance of patient medical history for oral surgery procedures as part of the overall pre-operative assessment processes and the relevance of National guidelines in this context, and when to refer to secondary care.
- To understand and practice the correct use of various oral surgery instruments and techniques on a Pigs head.
- Provide practical training in the principles of assessment, flap design, bone removal and sectioning of teeth that require this approach for removal, including discussion of instrument selection (the surgical armamentarium) to undertake minor oral surgery procedures in general dental practice.
- Identify appropriate post-operative care and pain management for oral surgery patients

#### Learning Content

- Evaluate and demonstrate application in the diagnosis, treatment and aftercare of patients requiring exodontia in general dental practice.
- Demonstrate greater skill and knowledge of methods of providing simple oral surgery and the instruments used to aid this.



#### GDC Outcomes: A C

16.30

End



# Thursday 25th April

## GC Dental Newport Pagnell

### Day Session

09.30

### Composite Hands On day

CPD Hrs = 6

#### Neil Kotecha

Herts ES and General Dental Practitioner

*To assist Foundation Dentists in choosing which equipment and techniques to employ when directly restoring anterior and posterior teeth.*

#### Objectives

- Evaluate the different composite systems available, the nature of their composition and how this may impact on material selection choice when restoring anterior teeth, alongside application of the knowledge of the anatomy of anterior teeth.
- Define current bonding techniques, matrixing systems, techniques for composite build-ups/placement, use of stents, alongside shaping and finishing protocols, to produce a life-like final restoration.
- Undertake a series of practical exercises to reinforce protocols associated with direct anterior restorations using a phantom head: class IV restoration and a direct composite veneer.

#### Learning Content

- Critique from improved knowledge and ability, when to use which technique for direct anterior restorations.
- To have enhanced practical skills in restoring anterior teeth, using a variety of techniques and equipment, to an appropriate form, to provide a functional and aesthetic restoration.

#### GDC Outcomes: A C



16:30

End



Friday 10th May

Lister PGMC

## Morning Session

09.30

### Implants in Practice

CPD Hrs = 3

#### Minesh Patel

Associate Prof Implant Dentistry Warwick University, Herts ES



*To examine when the provision of dental implants may be appropriate, when patients should be referred and what things a GDP should be doing regarding maintenance and monitoring of dental implants.*

#### Objectives

- Define aspects of implant dentistry sufficient to identify suitable cases for referral, give patients basic information and recognise failures.
- Examination and discussion of current National guidelines relating to the provision of dental implants and local arrangements for NHS provision.
- "Exploration and revision of the role of the dental practitioner in offering treatment options, including those unavailable on the NHS."

#### Learning Content

- Be able to define the indication and contraindications for the provision of dental implants for patients.
- Recognise the role, responsibilities and expected actions of the General Dental Practitioner in the management and monitoring of implants.
- Clearly describe the processes, both biological and procedural, involved in the planning, placing and care of dental implants.

#### GDC Outcomes: A C



13:00

Lunch





Friday 10th May

Lister PGMC

## Afternoon Session

13:30

Occlusion

CPD Hrs = 3

### Paul Jackson

Beds ES

*To build on the undergraduate knowledge and understanding of occlusion (and toothwear).*

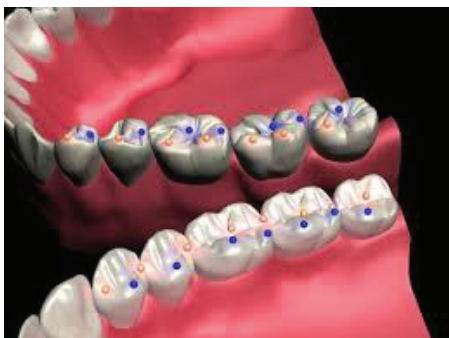
### Objectives

- *Define the ideal of the static and dynamic dentition.*
- *"Understanding of simple occlusal adjustment and realignment. To review current methods for restoring and replacing teeth in clinical practice. To be able to recognise tooth surface loss and its causes."*

### Learning Content

- *Implementation of the use of a conformative or reorganised approach for restoration of the dentition. Demonstrate knowledge of tooth surface loss, its diagnosis, aetiology and treatment.*
- *Define the vocabulary used in the study of occlusion and recognise the concepts of occlusion and its importance in dental care.*
- *Identify how and when to use a facebow, carry out a comprehensive examination of the articulatory system, record RCP and recognise the relationship between these areas and the principles involved in occlusion. Implement the prescription of splint therapy – why, when and how.*

### GDC Outcomes: A C



16:30

End



Friday 17th May

Lister PGMC

## Morning Session

09.30

### Dementia in the Dental Setting

CPD Hrs = 3

#### Zahra Nasir

Special Care Dentist Hertfordshire Community Service



*A session to aid the recognition of Dementia patients as they may present themselves in a dental setting. There will be examples of the types of presentation and the special adaptations required for these patients both in our behaviour and treatment planning.*

#### Objectives

- *Have an increased understanding of the cause of dementia. Have an awareness of the different types of dementia.*
- *Have an understanding of the common signs and symptoms of dementia as it may present in patients attending a dental setting.*

#### Learning Content

- *Be able to identify the with signs and symptoms displayed by a patient with dementia and understand the effects this may have on provision of their treatment.*
- *Be able to communicate with patient with dementia and their carers or family with greater confidence Be better able to provide the appropriate care for patients with dementia.*

#### GDC Outcomes: A B C D



Friday 17th May

Lister PGMC

## Afternoon Session

13:30

### Restorative Peer Review

CPD Hrs = 3

**Peter Russell**

Scheme TPD



*To peer review the results of the restorative project and to discuss and compare and update on contemporary materials, equipment, posture, clinical techniques for the fabrication of final restorations for the following, including temporisation: of Onlays and Full coverage crowns – adhesive/bonded and conventional*

#### Objectives

- *Describe the principles involved in the ideal preparations and how to modify techniques when the ideal cannot be achieved.*
- *Identify appropriate use of material choice for each type of preparation.*
- *Undertake a series of practical exercises to reinforce protocols associated with indirect anterior and posterior preparations and provision of temporaries.*

#### Learning Content

- *Evaluate and critique their own preparations when they return to their training practices.*
- *To have enhanced practical skills in indirect preparations of anterior/posterior teeth, using a variety of techniques and equipment.*
- *Assess material selection for different types of indirect preparations*

#### GDC Outcomes: A C



16:30

End





# Thursday 23rd May

Kings House, Bedford

## Day Session

09.30

Beyond Foundation day 1

CPD Hrs = 6

Humphrey & Co, Chase De Vere Wealth Management



*Provide Foundation Dentists with the skills to better manage their own financial situations and also to understand the contractual arrangements when applying for associate positions in general dental practice.*

### Objectives

- *Inform Foundation Dentists of the relevance of finance to their personal and professional lives, alongside the requirements for financial management and record keeping for personal and practice situations.*
- *Identify the benefits and differences to different types of professional contracts and the associated financial responsibilities.*
- *Evaluate the methods of remuneration for dental employees and self-employed associates including the associated taxation, superannuation and income protection processes applicable within the UK.*

### Learning Content

- *Describe the requirements for financial record keeping and management at an individual and practice level.*
- *Define the HMRC requirements for general dental practitioners at both a personal and practice level.*
- *Recognise the importance of good personal financial management regarding income, employment, income protection and pension provision, both within and outside the NHS.*

### GDC Outcomes: B



16:30

End



Friday 24th May

Bedford PGMC

## Day Session

09.30

Beyond foundation day 2

CPD Hrs = 6

### Hempsons Solicitors and the BDA

beyond

*Provide Foundation Dentists with the skills to better manage their own financial situations and also to understand the contractual arrangements when applying for associate positions in general dental practice.*

#### Objectives

- Inform Foundation Dentists of the relevance of finance to their personal and professional lives, alongside the requirements for financial management and record keeping for personal and practice situations.
- Identify the benefits and differences to different types of professional contracts and the associated financial responsibilities.
- Evaluate the methods of remuneration for dental employees and self-employed associates including the associated taxation, superannuation and income protection processes applicable within the UK.

#### Learning Content

- Describe the requirements for financial record keeping and management at an individual and practice level.
- Define the HMRC requirements for general dental practitioners at both a personal and practice level.
- Recognise the importance of good personal financial management regarding income, employment, income protection and pension provision, both within and outside the NHS.

#### GDC Outcomes: B



16:30

End



Friday 31st May

Lister PGMC

## Day Session

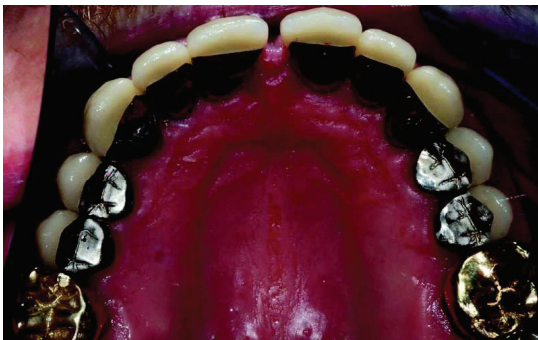
09.30

### Toothwear & Advanced Restorations

CPD Hrs = 6

#### Prof Andrew Eder

Emeritus Professor of Restorative Dentistry and Dental Education



*To build on the undergraduate knowledge and understanding of tooth wear and advanced restorative techniques.*

#### Objectives

- *To review current methods for restoring and replacing teeth in clinical practice*
- *To be able to recognise and diagnose tooth surface loss and its causes*

#### Learning Content

- *A better knowledge of tooth surface loss, its diagnose, aetiology and treatment*
- *Understanding of advanced restorative techniques in relation to the provision of dental care in practice*

**GDC Outcomes: A C D**



16:30

End



# Thursday 20th June

Lister PGMC

## Morning Session

09.30

### Audit Presentations

CPD Hrs = 6

#### Peter Russell TPD and 2 ESs

Speaker role

*To understand fully the role and structure of audit in general dental practice by completing a 2 cycle audit and its subsequent presentation to your peers.*



#### Objectives

- *Exploration of the structure, role and effectiveness of Audit in the provision of clinical care.*
- *Learn about the methods of carrying out Audit in general dental practice and how these can be effectively implemented.*
- *Discuss fully the roles of Audit and research and how these each play a different part in the delivery of effective dental care and help to provide total quality management of this delivery process.*

#### Learning Content

- *The ability to plan and implement an audit (of at least two cycles) within general dental practice, together with a report on its management, and outcome.*
- *An ability to analyse critically processes involved in the management of general dental practice.*
- *An understanding of the concepts of effective quality management of the delivery of effective dental care within general dental practice*

#### GDC Outcomes: A C

16:30

End



# Friday 28th June

Lister PGMC

## Day Session

09.30

### Milestone 3 Presentations

CPD Hrs = 6

#### Peter Russell + 2 ESs

TPD

*This session will be used for Foundation Dentists to present their Milestone 3 case.*

#### Objectives

- "To enhance self-assessment, reflection and feedback amongst participants."
- "Provide an opportunity to learn how best to approach work in the future."
- "Reflect on a wide range of complex clinical care plans."

#### Learning Content

- Assess and treatment plan appropriately.
- Reflect regarding their own clinical work and if required use personal learning needs to improve outcomes for patients.

#### GDC Outcomes: A C D



16.30

End



**Friday 12th July**  
**Hilton Cambridge City Centre**

## Day Session

**09.30**

**EoE Showcase Event**

CPD Hrs = 6

**Various**



*TBC once the event planning has been completed.*

**16:30**

**End**