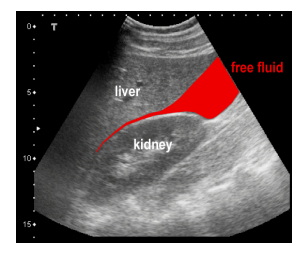
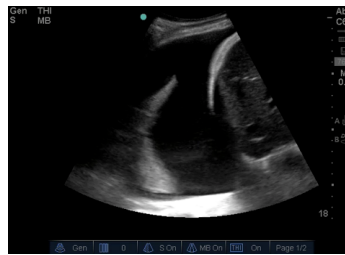
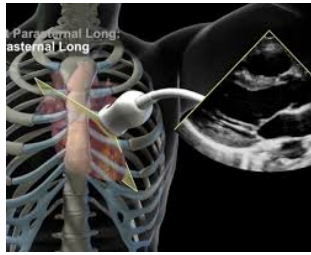


## West Suffolk Critical Care Ultrasound Course

18th & 19th of September 2017  
Simulation Centre, West Suffolk Hospital NHS Foundation Trust  
Bury St Edmunds, IP33 2QZ



A two day course aimed at:

- Intensivist and Anaesthetist
- Acute Medicine and Emergency Physicians

### Course includes:

- Separate FICE (18th September), CUSIC\* (19th September) day
- Ultrasound physics, image acquisition and optimisation
- Cardiac sonoanatomy and FICE examination
- Lung and abdominal ultrasound including FAST
- Vascular access and DVT scanning
- Maximum 'hands on' scan on volunteers, simulators
- Pre-course material and interactive quiz sessions

Further details contact: [critiug@gmail.com](mailto:critiug@gmail.com)

Course Fees : 2 days £275 (£250 for EOE trainees), 1 day £150 (£125 for EOE trainees) *delegates attending both days will be preferred.*

Course Organisers : Kaushik Bhowmick, Vijay Gopal

Faculty : BSE accredited tutors & FICE and CUSIC registered mentors

