



**England**

**NHS England – East of England**

**Workforce, Training and Education  
Directorate**

**Education and Training Sub-Directorate**

**Postgraduate Medical and Dental  
Education (PMDE) Senior Leadership Team  
Roles and Responsibilities**

**Last updated: 09/01/2026**

# PMDE Senior Leadership Team (SLT)

Postgraduate  
Dean  
Bill Irish

Primary Care  
Dean & Deputy  
Dean  
Andrew Wright

Deputy Dean  
Helen Johnson

Deputy Dean  
Rowan  
Burnstein

Deputy Dean  
Chris O'Loughlin

Postgraduate  
Dental Dean  
Malcolm Brady

Education &  
Training  
Operations Lead  
Robin Holland

Associate Dean  
Francesca  
Crawley

Associate Dean  
Jane  
MacDougall

Associate Dean  
Nisha Nathwani

Head of School  
of General  
Practice  
Paul Wright

Head of School  
of General  
Practice  
Ayesha Tu  
Zahra

Foundation  
School Director  
Helen Barker

# Senior Leadership Team – Specific Portfolios

| Postgraduate Dean<br>Bill Irish               | Primary Care Dean & Deputy Dean<br>Andrew Wright | Deputy Dean<br>Helen Johnson            | Deputy Dean<br>Rowan Burnstein          | Deputy Dean<br>Chris O'Loughlin         | Postgraduate Dental Dean<br>Malcolm Brady     | Education & Training Operations Lead<br>Robin Holland            | Associate Dean<br>Jane MacDougall | Associate Dean<br>Francesca Crawley | Associate Dean<br>Nisha Nathwani |
|---|--|---|---|---|---|--|-----------------------------------|-------------------------------------|----------------------------------|
| Oversight of all PMDE workstreams             | Oversight of Allocated Schools*                  | Oversight of Allocated Schools*         | Oversight of Allocated Schools*         | Oversight of Allocated Schools*         | Oversight/Management of Dental School         | Oversight/Management of Senior Managers & teams in PMDE          | Medical Lead for Allocated ICB    | Medical Lead for Allocated ICB      | Medical Lead for Allocated ICB   |
| Responsible Officer                           | Oversight of GP Associate Deans                  | Oversight of Allocated Associate Deans♦ | Oversight of Allocated Associate Deans♦ | Oversight of Allocated Associate Deans♦ | Oversight of Dental Associate Deans           | Strategic Projects e.g. Lead Employer                            |                                   |                                     |                                  |
| Workforce Transformation                      | CPD for Primary Care Clinicians                  | Medical Lead for Allocated ICB          | Medical Lead for Allocated ICB          | Medical Lead for Allocated ICB          | Dental Lead for 6 ICBs                        | Lead for development of policies and procedures                  |                                   |                                     |                                  |
| Provide strategic interface with rest of NHSE | GP Nursing                                       | Foundation, Enhance and MP Fellows      |   |   | HEI Support                                   | Lead for Investment Planning, EFA for PMDE and Budget Management |                                   |                                     |                                  |
| Health Care Scientists                        | Advanced Practice in Primary Care                | Widening Participation                  |   |   | Dental Workforce Development & Transformation |  |                                   |                                     |                                  |
|   |  | Pharmacy Foundation                     |   |   |   | Global Health/ International Development                         |                                   |                                     |                                  |

\* See slide 5

♦ See slide 7

# Senior Leadership - National Responsibilities

| Postgraduate Dean<br>Bill Irish    | Deputy Dean<br>Helen Johnson                          | Deputy Dean<br>Rowan Burnstein | Deputy Dean<br>Chris O'Loughlin           | Associate Dean<br>Jane MacDougall | Dental Dean<br>Malcolm Brady                          | Primary Care Dean & Deputy Dean<br>Andrew Wright | Associate Dean<br>Francesca Crawley | Education & Training Operations Lead<br>Rob Holland |
|------------------------------------|---|--------------------------------|---|-----------------------------------|---|--|-------------------------------------|---|
| Lead Dean for General Surgery      | Lead Dean for Chemical Pathology & Metabolic Medicine | Lead Dean for Urology          | Lead Dean for Paediatrics & Paediatric EM | Lead Dean for ACCS                | Lead Dean for Dental Workforce Development            | COGPED rep to Deanery Assessment Reference Group | MDRS National Careers Group         | SMG rep for ICS Funding Statements                  |
| Lead Dean for Trauma & Orthopaedic | Lead Dean for Acute Internal Medicine                 | Lead Dean for JCST (jointly)   | Lead Dean Gold Guide Reference Group      |                                   | Lead Dean for International Dental Graduates          | GP/Public Health Dual CCT National Lead for PCDs | Lead Dean for Clinical Genetics     | SMG rep for Lay Reps SOP                            |
| Lead Dean for JCST (jointly)       |   | Lead Dean for ENT              |   |                                   | Lead Dean for Restorative and Special Care Dentistry  | Lead Dean for Palliative Medicine                |                                     |   |
| Global Health                      |   |                                |   |                                   | Lead Dean for Digital Simulation and TEL in Dentistry | Lead Dean for CSRH                               |                                     |   |
|                                    |   |                                |   |                                   | Lead Dean for Advancing Dental Care Projects          | PCD rep for Integrated Neighbourhood Teams       |                                     |   |
|                                    |   |                                |   |                                   |   | COPMeD rep on SCA Exam Board                     |                                     |   |

# EoE Specialty Schools

| Deputy Dean<br>Chris<br>O'Loughlin | Deputy Dean<br>Rowan<br>Burnstein | Deputy Dean<br>Helen Johnson | Primary Care<br>Dean & Deputy<br>Dean<br>Andrew Wright | Dental Dean<br>Malcolm Brady |
|------------------------------------|-----------------------------------|------------------------------|--|------------------------------|
| Paediatrics                        | Radiology                         | SAS and LEDs                 | Primary Care   | Dentistry                    |
| Emergency<br>Medicine/<br>PHEM     | Obstetrics &<br>Gynaecology       | Foundation                   | Public Health  |                              |
| Ophthalmology                      | Surgery                           | Anaesthetics &<br>ICM        | CSRH   |                              |
| Pathology                          | Radiology<br>Academy              | Psychiatry                   |  |                              |
| Medicine                           | Endoscopy<br>Academy              | Multiprofessional<br>School  |  |                              |

# Deanery ICB Leads

- Each ICB has a Deputy Dean / Associate Dean assigned to it as a 'Patch Dean'
- The Patch Dean role ensures that education and training is represented at ICB level, Patch Deans regularly meet with Directors of Medical Education and GP Associate Deans, which enables discussion around priority issues and helps to facilitate a holistic approach to risks within each patch.

## Current ICB Configuration

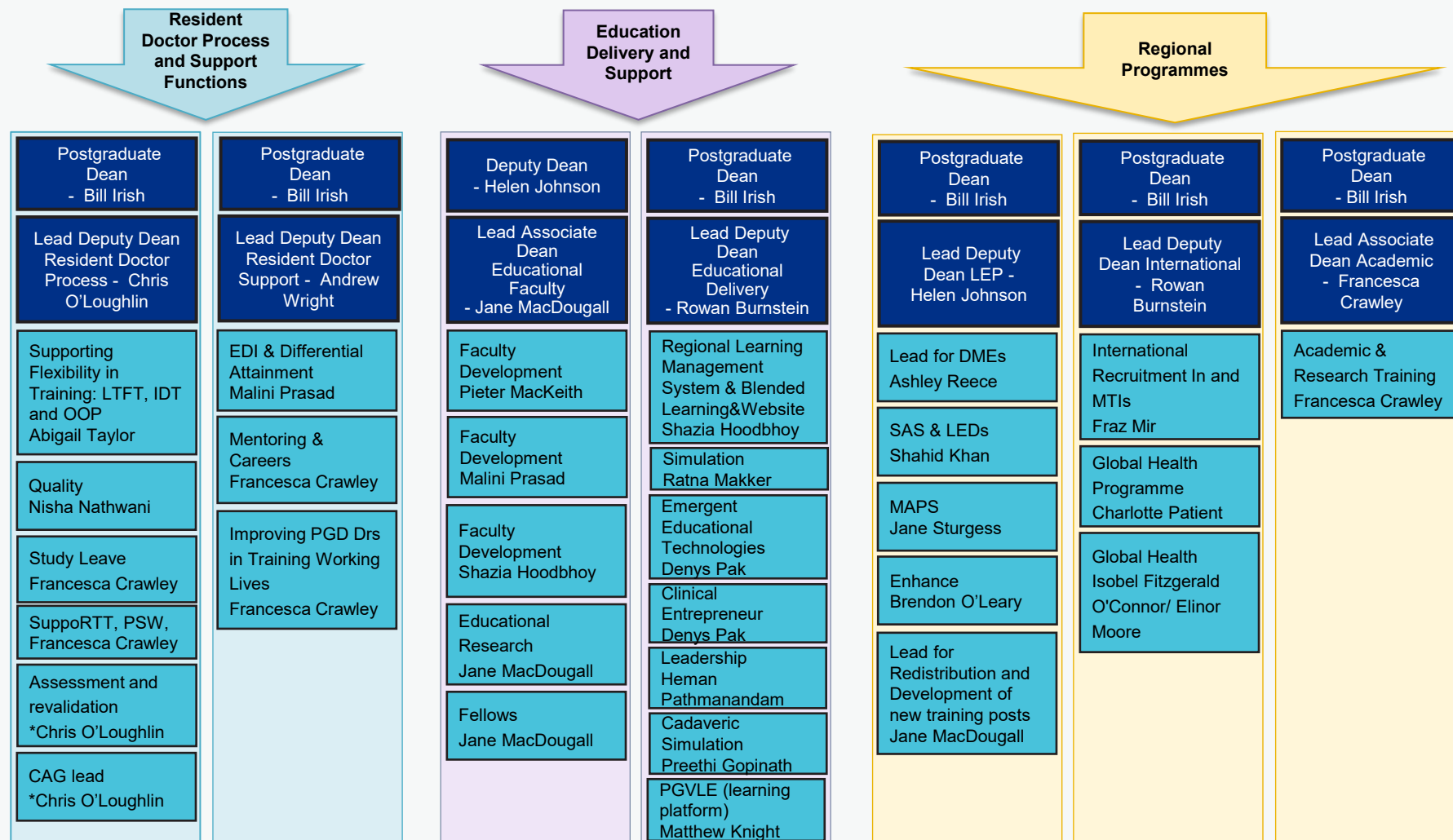
|   | Suffolk & North East Essex (SNEE)   | Norfolk & Waveney (N&W)      | Mid & South Essex (MSE)         | Cambridgeshire & Peterborough (C&P) | Bedford, Luton & Milton Keynes (BLMK) | Hertfordshire & West Essex (HWE) |
|---|-------------------------------------|------------------------------|---------------------------------|-------------------------------------|---------------------------------------|----------------------------------|
| <b>Patch Deans:</b>   | Associate Dean<br>Francesca Crawley | Deputy Dean<br>Helen Johnson | Deputy Dean<br>Chris O'Loughlin | Associate Dean<br>Jane MacDougall   | Associate Dean<br>Nisha Nathwani      | Deputy Dean<br>Rowan Burnstein   |
| <b>Primary Care Workforce Associate Postgraduate Deans:</b> | Rebecca Cummins-Lagden              | Cathryn Ruddock              | Jon Rouse                       | Camilla Tilbury                     | Toni Munno                            | Hannah Cowling & Emma Salik      |

## New ICB Configuration

|   | Norfolk & Suffolk                         | Greater Essex                      | Central East  |
|---|---|------------------------------------|---|
| <b>Patch Deans:</b>   | Helen Johnson<br>Francesca Crawley        | Chris O'Loughlin<br>Nisha Nathwani | Rowan Burnstein<br>Jane MacDougall                            |
| <b>Primary Care Workforce Associate Postgraduate Deans:</b> | Rebecca Cummins-Lagden<br>Cathryn Ruddock | Jon Rouse<br>TBC                   | Toni Munno<br>Camilla Tilbury<br>Hannah Cowling<br>Emma Salik |

# EoE Project Workstreams & Associate Deans

- Working as a team together with NHSE operational teams; Educators to provide relevant and appropriate clinical support to their specified projects
- ADs to provide Professional Accountability



\* Where a Deputy Dean covers an Associate Dean role, they will report into the Postgraduate Dean



# Additional Information

- **NHSE Support and Development**

- EoE Induction and Buddy System
- Networking programme to develop educators, provide support and coaching

- **Faculty Support Team - Operational Support**

- Guidance and Support for Associate Deans and any current or new local or national projects approved by SLT within Faculty Support remit
- Problem solve / NHSE Processes i.e. finance, procurement, internal and external communications, local or national directives and policies
- Ensure individual ADs are fully aware of correct contact details for Account Manager and other administrative support
- Administrative support organised from within the team at appropriate stages of projects
- Attend Board, Strategy, Task & Finish Groups, AD & HoS and DME meetings as relevant
- Ensure appropriate links are made with other PMDE functional teams to deliver the project