



England

NHS England – East of England

**Workforce, Training and Education
Directorate**

Education and Training Sub-Directorate

**Postgraduate Medical and Dental
Education (PMDE) Senior Leadership Team
Roles and Responsibilities**

Last updated: 03/12/2025

PMDE Senior Leadership Team (SLT)

Postgraduate
Dean
Bill Irish

Primary Care
Dean & Deputy
Dean
Andrew Wright

Deputy Dean
Helen Johnson

Deputy Dean
Rowan
Burnstein

Deputy Dean
Chris O'Loughlin

Postgraduate
Dental Dean
Malcolm Brady

Education &
Training
Operations Lead
Robin Holland

Associate Dean
Francesca
Crawley

Associate Dean
Jane
MacDougall

Associate Dean
Nisha Nathwani

Head of School
of General
Practice
Paul Wright

Head of School
of General
Practice
Ayesha Tu
Zahra

Foundation
School Director
Helen Barker

Senior Leadership Team – Specific Portfolios

Postgraduate Dean Bill Irish	Primary Care Dean & Deputy Dean Andrew Wright	Deputy Dean Helen Johnson	Deputy Dean Rowan Burnstein	Deputy Dean Chris O'Loughlin	Postgraduate Dental Dean Malcolm Brady	Education & Training Operations Lead Robin Holland	Associate Dean Jane MacDougall	Associate Dean Francesca Crawley	Associate Dean Nisha Nathwani
Oversight of all PMDE workstreams	Oversight of Allocated Schools*	Oversight of Allocated Schools*	Oversight of Allocated Schools*	Oversight of Allocated Schools*	Oversight/Management of Dental School	Oversight/Management of Senior Managers & teams in PMDE	Medical Lead for Allocated ICB	Medical Lead for Allocated ICB	Medical Lead for Allocated ICB
Responsible Officer	Oversight of GP Associate Deans	Oversight of Allocated Associate Deans♦	Oversight of Allocated Associate Deans♦	Oversight of Allocated Associate Deans♦	Oversight of Dental Associate Deans	Strategic Projects e.g. Lead Employer			
Workforce Transformation	CPD for Primary Care Clinicians	Medical Lead for Allocated ICB	Medical Lead for Allocated ICB	Medical Lead for Allocated ICB	Dental Lead for 6 ICBs	Lead for development of policies and procedures			
Provide strategic interface with rest of NHSE	GP Nursing	Foundation, Enhance and MP Fellows			HEI Support	Lead for Investment Planning, EFA for PMDE and Budget Management			
Health Care Scientists	Advanced Practice in Primary Care	Widening Participation			Dental Workforce Development & Transformation				
		Pharmacy Foundation				Global Health/ International Development			

* See slide 5

♦ See slide 7

Senior Leadership - National Responsibilities

Postgraduate Dean Bill Irish	Deputy Dean Helen Johnson	Deputy Dean Rowan Burnstein	Deputy Dean Chris O'Loughlin	Associate Dean Jane MacDougall	Dental Dean Malcolm Brady	Primary Care Dean & Deputy Dean Andrew Wright	Associate Dean Francesca Crawley	Education & Training Operations Lead Rob Holland
Lead Dean for General Surgery	Lead Dean for Chemical Pathology & Metabolic Medicine	Lead Dean for Urology	Lead Dean for Paediatrics & Paediatric EM	Lead Dean for ACCS	Lead Dean for Dental Workforce Development	COGPED rep to Deanery Assessment Reference Group	MDRS National Careers Group	SMG rep for ICS Funding Statements
Lead Dean for Trauma & Orthopaedic	Lead Dean for Acute Internal Medicine	Lead Dean for JCST (jointly)	Lead Dean Gold Guide Reference Group		Lead Dean for International Dental Graduates	GP/Public Health Dual CCT National Lead for PCDs	Lead Dean for Clinical Genetics	SMG rep for Lay Reps SOP
Lead Dean for JCST (jointly)		Lead Dean for ENT			Lead Dean for Restorative and Special Care Dentistry	Lead Dean for Palliative Medicine		
Global Health					Lead Dean for Digital Simulation and TEL in Dentistry	Lead Dean for CSRH		
					Lead Dean for Advancing Dental Care Projects	PCD rep for Integrated Neighbourhood Teams		
						COPMeD rep on SCA Exam Board		

EoE Specialty Schools

Deputy Dean Chris O'Loughlin	Deputy Dean Rowan Burnstein	Deputy Dean Helen Johnson	Primary Care Dean & Deputy Dean Andrew Wright	Dental Dean Malcolm Brady
Paediatrics	Radiology	SAS and LEDs	Primary Care	Dentistry
Emergency Medicine/ PHEM	Obstetrics & Gynaecology	Foundation	Public Health	
Ophthalmology	Surgery	Anaesthetics & ICM	CSRH	
Pathology	Radiology Academy	Psychiatry		
Medicine	Endoscopy Academy	Multiprofessional School		

Deanery ICB Leads

- Each ICB has a Deputy Dean / Associate Dean assigned to it as a 'Patch Dean'
- The Patch Dean role ensures that education and training is represented at ICB level, Patch Deans regularly meet with Directors of Medical Education and GP Associate Deans, which enables discussion around priority issues and helps to facilitate a holistic approach to risks within each patch.

Current ICB Configuration

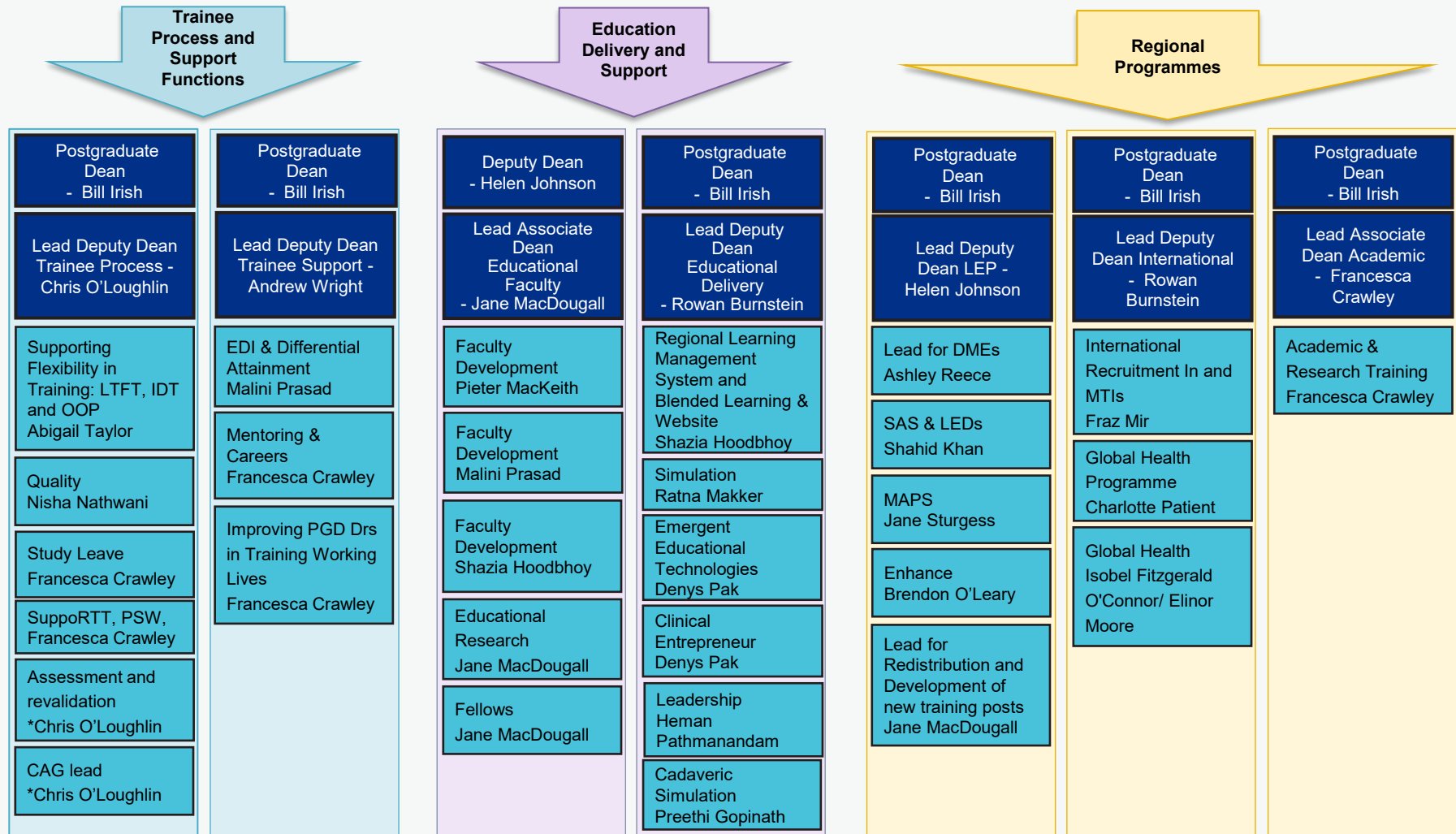
	Suffolk & North East Essex (SNEE)	Norfolk & Waveney (N&W)	Mid & South Essex (MSE)	Cambridgeshire & Peterborough (C&P)	Bedford, Luton & Milton Keynes (BLMK)	Hertfordshire & West Essex (HWE)
Patch Deans:	Associate Dean Francesca Crawley	Deputy Dean Helen Johnson	Deputy Dean Chris O'Loughlin	Associate Dean Jane MacDougall	Associate Dean Nisha Nathwani	Deputy Dean Rowan Burnstein
Primary Care Workforce Associate Postgraduate Deans:	Rebecca Cummins-Lagden	Cathryn Ruddock	Jon Rouse	Camilla Tilbury	Toni Munno	Hannah Cowling & Emma Salik

New ICB Configuration

	Norfolk & Suffolk	Greater Essex	Central East
Patch Deans:	Helen Johnson Francesca Crawley	Chris O'Loughlin Nisha Nathwani	Rowan Burnstein Jane MacDougall
Primary Care Workforce Associate Postgraduate Deans:	Rebecca Cummins-Lagden Cathryn Ruddock	Jon Rouse TBC	Toni Munno Camilla Tilbury Hannah Cowling Emma Salik

EoE Project Workstreams & Associate Deans

- Working as a team together with NHSE operational teams; Educators to provide relevant and appropriate clinical support to their specified projects
- ADs to provide Professional Accountability



* Where a Deputy Dean covers an Associate Dean role, they will report into the Postgraduate Dean



Additional Information

- **NHSE Support and Development**

- EoE Induction and Buddy System
- Networking programme to develop educators, provide support and coaching

- **Faculty Support Team - Operational Support**

- Guidance and Support for Associate Deans and any current or new local or national projects approved by SLT within Faculty Support remit
- Problem solve / NHSE Processes i.e. finance, procurement, internal and external communications, local or national directives and policies
- Ensure individual ADs are fully aware of correct contact details for Account Manager and other administrative support
- Administrative support organised from within the team at appropriate stages of projects
- Attend Board, Strategy, Task & Finish Groups, AD & HoS and DME meetings as relevant
- Ensure appropriate links are made with other PMDE functional teams to deliver the project