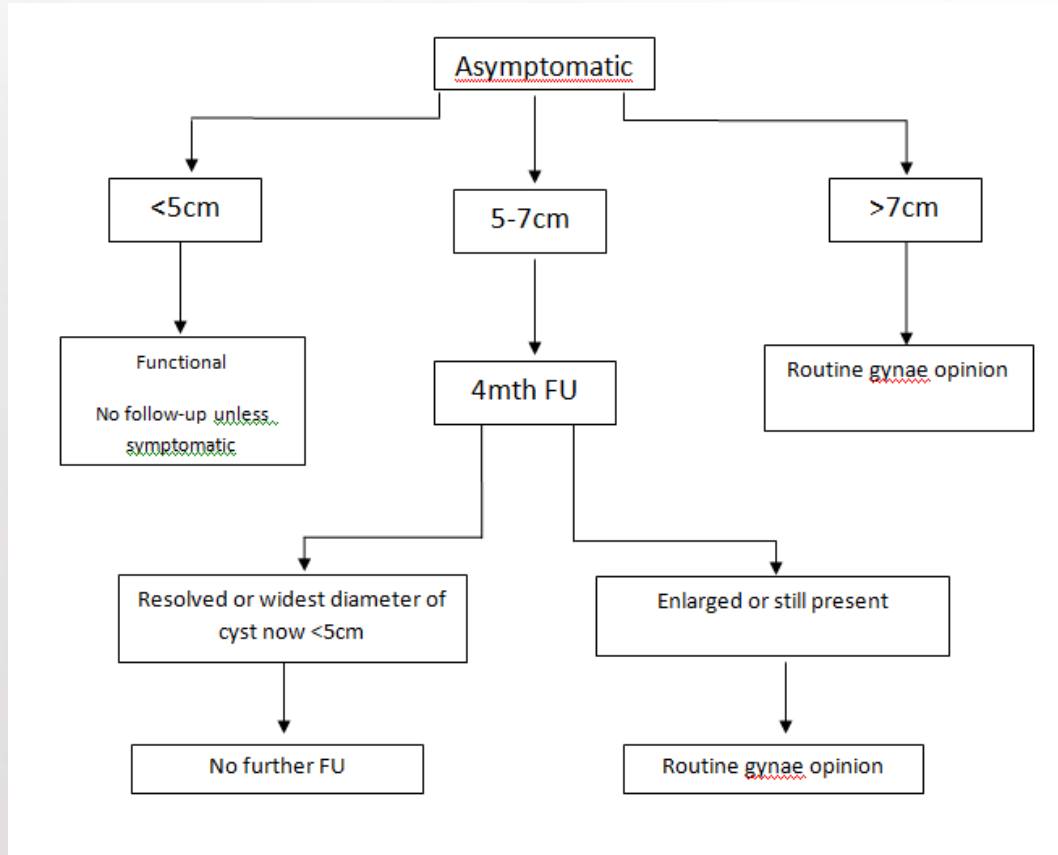


To be amongst the best...

# Imaging Menagerie

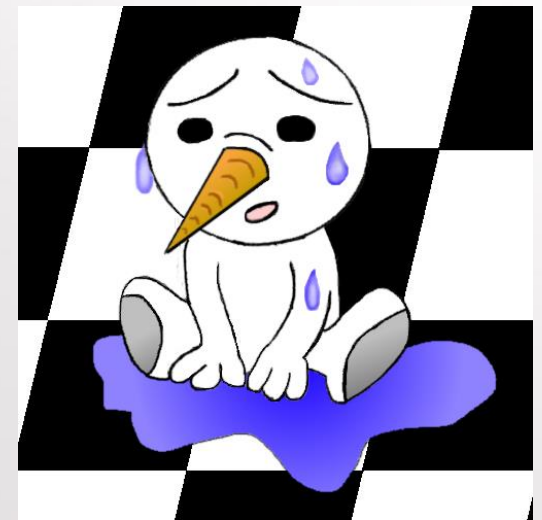


# Ovarian Cysts



# Kidneys

- If you just want Kidneys - don't ask for KUB
- KUB preparation is 1 ½ litres of water beforehand
- If you are 90 yo with a weak bladder you really really don't want 1 ½ litres of fluid!!



# National Lung Cancer Optimal Pathway

- New plan as of Nov 2017
- Test 1 – CXR – Reported within 24 hours
- If positive Test 2 – CT Chest / Abdo – within 3 days.
- BUT 10% of lung cancers have a normal CXR.
- Up to 50% of very small lung cancers (under 1cm) cannot be seen.
- SO – If you are highly suspicious do a CT regardless

# National Lung Cancer Optimal Pathway

- We need your help.
- Cough – isn't enough on a request form.
- Please add – Smoking history, weight change, haemoptysis, chest / **SHOULDER** pain.

## 55 year old.

- >1y of R sided chest pains rad to the shoulder, unintentional weight loss, bloods - acute phase only, no Sx of infection or cough, smoker + COPD

To be amongst the best...

## Over to you.....

55 Year old

Smoker

Cough

Inter-scapular pain

# Diagnosis

- 1)
- 2)
- 3)



6 weeks later

Course of  
Amoxicillin

500 mg tds – PLEASE  
don't give 250mg!!

# What is consolidation?

- Consolidation means airspace shadowing.
- It is either
- BLOOD
- PUS
- CELLS
  
- That's why we repeat films 4-6 weeks after Rx