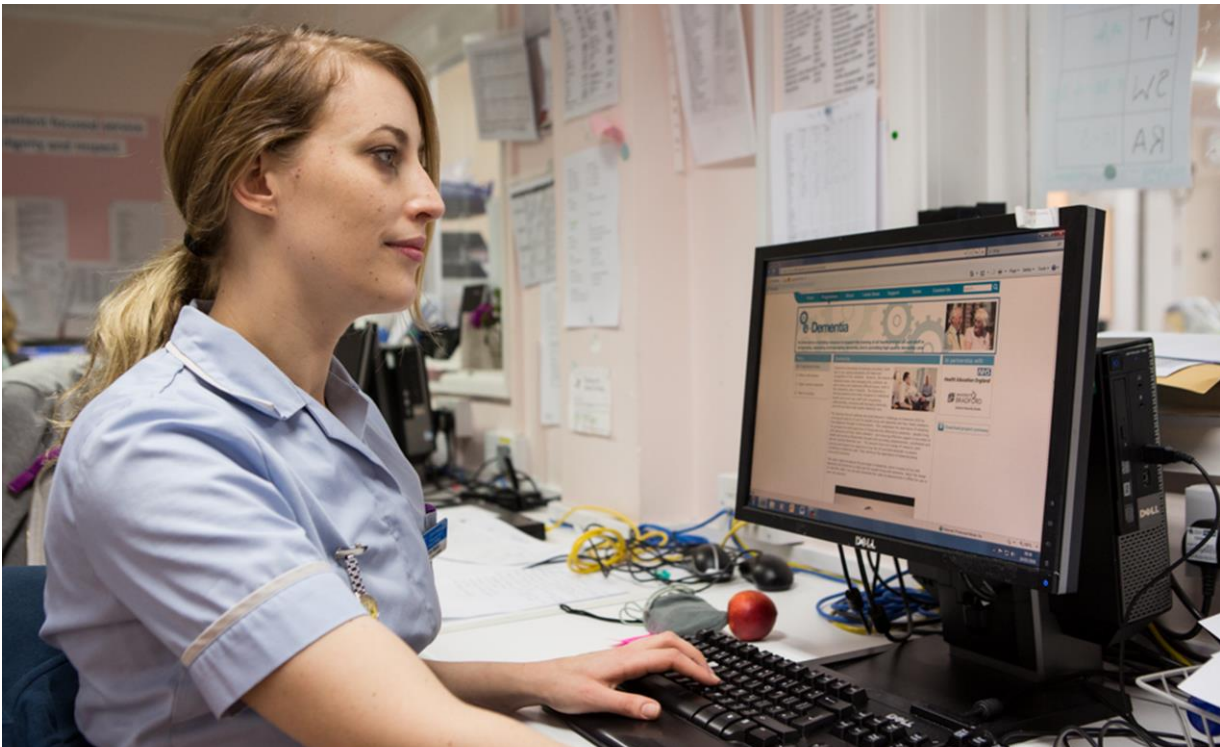


# TEL NEWS

## Welcome to TEL News



TEL News is your monthly update keeping you up to speed with all that is Technology Enhanced Learning (TEL) in healthcare. TEL News includes information from Health Education England's (HEE) TEL Programme team, the e-Learning for Healthcare Programme, e-Learning and simulation Leads across the local offices and other updates we think you will find useful. We're keen to spread the news about TEL so would be grateful if you would share it throughout your own networks. If a colleague would like adding to the distribution list please ask them to email [hee.tel@nhs.net](mailto:hee.tel@nhs.net) providing their contact details.

April 2016

## TEL Programme update

TEL Programme

### Calling all healthcare professionals - user testers needed

The TEL Programme is looking for healthcare professionals of varying roles, levels of training, qualification and experience to help with the development phase of a learning hub.

If you are a learner, a trainer, an educator or commissioner and would like to help us undertake further user needs research and testing in the development of a national online hub for learning resources we'd love to hear from you.

...be part of shaping a new, online healthcare professional learning hub.

You can be part of this work from the comfort of your own home or workplace, in your own time and it will probably require no more than one hour of your time.

Get in touch if you'd like to be part of shaping a new, online healthcare professional learning hub.

To register your interest or for more information please email [hee.tel@nhs.net](mailto:hee.tel@nhs.net)

### “All groups” meeting – date change

The “all groups” meeting that was scheduled for this month has been postponed as a number of colleagues have advised they may not be able to attend due to the impact of the proposed junior doctor strike on the same date.

The meeting will now take place on **23 May 2016**. As before, this will be held at Friends House, London, and will run from 10am to 4pm. A calendar invite has been sent to all members of the TEL Programme groups.

The purpose of the meeting is to share the progress made across the TEL Programme and the latest updates on the HEE Learning Hub, with a wider theme of horizon scanning and what to expect next. PlanB Learning's Donald Clark, is one of our confirmed speakers. He will be coming along to share some of his insights into the future and emerging technologies that are likely to have the biggest impact across healthcare education and training.

## e-LfH update

The HEE e-LfH team is constantly updating existing and launching new e-learning sessions. For the schedule of when new sessions will be launched please click on this link: [www.e-lfh.org.uk/planned-programmes](http://www.e-lfh.org.uk/planned-programmes)



## National Care Certificate e-learning programme to be developed



As part of the continuing drive to implement the Care Certificate nationwide, HEE e-LfH is developing an e-learning programme. This is being supported by a steering group with membership from HEE's local offices and content will be developed and reviewed by subject matter experts.

The programme will provide a suite of learning to support the underpinning knowledge for the Care Certificate. It will utilise the work completed in the existing online workbook which was developed by HEE, Skills for Care and Skills for Health, with health and social care staff across the country.

Alan Ryan, e-Learning for Healthcare Director, said: "The learning package will be put together using content from other relevant e-LfH programmes as well as new content to make a single structured, accessible programme. All activity will be recorded within the user's account as evidence of completion and it will also provide an additional way for staff to gather the theory part of the Care Certificate, whilst being assessed for delivery of clinical skills in their work setting."

The Care Certificate e-learning programme, which can be accessed free of charge by health and social care staff, will provide the underpinning information to support the Care Certificate and signpost staff to further information and learning where they can learn more about specific topics.

**The programme will provide a suite of learning to support the knowledge for the Care Certificate.**

## New sessions added to image interpretation e-learning project

Image Interpretation, also known as Interpretation of Radiological Images (e-IRI), is an e-learning project to support radiographers and other healthcare professionals with interpreting and offering clinical evaluations on radiographs and other imaging modalities. The project is a collaboration between the Society and College of Radiographers and HEE e-LfH.

The project originally focused on sessions to support image interpretation of standard radiographs of the musculoskeletal system, but has since grown in size and scope. There have already been 21 new interactive sessions published this year on topics ranging from Dignity and Continuing Professional Development, to Magnetic Resonance Imaging and Gastro-intestinal and Genito-urinary imaging. New modules have also been added to the programme: Cardiac Imaging, Neurointervention, Dental and Maxillo-facial Radiography and Accessory Projections.

The learning sessions have been written and reviewed by radiographers, academics and radiologists. They include sample images, assessments and case studies, as well as links to the latest research and resources. For more information or to access the free material see <http://www.e-lfh.org.uk/programmes/image-interpretation/>

## e-LfH's e-Den programme explores sustainable dentistry

A new e-learning session on sustainable dentistry has recently been released, as part of the e-Den (Dentistry) programme. The resource provides an introduction to climate change and explores the main principles of sustainable practice and their application in dentistry. It encourages clinicians and managers to make sustainable choices and identifies practical tools and resources to support this.



The e-learning resource has been developed by dentists, Devika Vadher and Divya Verma, working with the Centre for Sustainable Healthcare (CSH) as Sustainable Dentistry Scholars – part-time roles funded by Health Education Kent, Surrey and Sussex.

For more information on the e-learning session, visit <http://portal.e-lfh.org.uk/Component/Details/424027>

**For more information about anything you have read in this update please email [hee.tel@nhs.net](mailto:hee.tel@nhs.net)**