

For more information on our work and to keep up to date with the latest developments:

Visit: [https://heeo.ee.nhs.uk/wps/cp\\_home](https://heeo.ee.nhs.uk/wps/cp_home)

## Cambridgeshire & Peterborough Workforce Partnership



Email: [heee.cpwp@nhs.net](mailto:heee.cpwp@nhs.net)

Find us on [Facebook](#)  
Watch us on [YouTube](#)  
Follow us on [Twitter](#) @HEE\_EoE

Developing people  
for health and  
healthcare

[www.hee.nhs.uk](http://www.hee.nhs.uk)



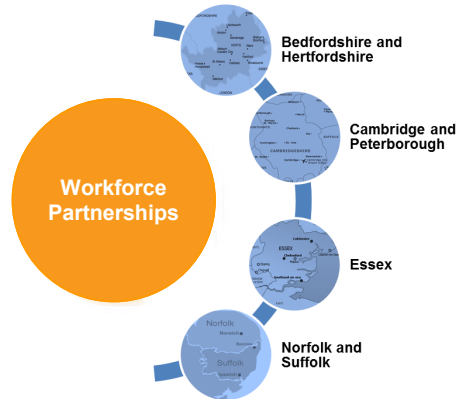
Developing people  
for health and  
healthcare

[www.hee.nhs.uk](http://www.hee.nhs.uk)



## All About Cambridgeshire & Peterborough Workforce Partnership

Health Education England (HEE) engages at a local level through four Workforce Partnerships.



Each Workforce Partnership has responsibility to lead workforce planning and education commissioning on behalf of all providers of NHS funded care within a geographically defined area; ensuring security of supply of the local health and care workforce and supporting national workforce priorities set by Health Education England (HEE).

The Workforce Partnerships are led by the Head of Workforce Partnership and have local teams that deliver key work streams.

In the Cambridgeshire and Peterborough Workforce Partnership formal business is carried out through an Executive Group chaired by Mathew Winn of Cambridgeshire Community Services NHS trust. Members of the group represent the communities they serve rather than their employer organisation.



**Breda Watson**  
Pre-Professional  
Coordinator  
M 07908 610022  
E brenda.watson@nhs.net



**Colin Long**  
Pre-Professional Lead  
M 07534 856093  
E colinlong@nhs.net



**Fiona Chatten**  
Research Study Project  
Manager  
M 07920 210549  
E fiona.chatten@nhs.net



**Kirsty Goddard**  
Partnership Support Officer  
T 01223 597612  
E kirstygoddard1@nhs.net



**Steve Lee**  
Workforce Partnership  
Support Apprentice  
T 01223 597503  
E Steve.lee2@nhs.net

In addition to our substantive team members, the Cambridgeshire and Peterborough Workforce Partnership works together with Commissioning and Quality Improvement Fellows. Our Commissioning and Quality Improvement Fellows are working with the team as part of a development programme funded by HEE aiming to build clinically-qualified leaders able to act as change agents to improve the quality of patient care in the east of England. Each Commissioning and Quality Improvement Fellows contribute to a particular area of work aligned with our priority areas.

Our Team



**Lucy Dennis**  
Head of Workforce Partnership  
T 01223 597563  
M 07958 548428  
E lucydennis@nhs.net



**Audrey Foster**  
Strategic Development  
Lead  
T 01223 597528  
M 07904 968528  
E audrey.foster1@nhs.net



**Corrie Maxwell**  
Strategic Transformation  
Lead  
T 01223 597528  
M 07917 266636  
E corriemaxwell@nhs.net



**Emma Wakelin**  
Strategic Transformation  
Programme Manager  
T 01223 597794  
M 07951 634471  
E emma.wakelin@nhs.net



**Diane Gray**  
Performance Programme  
Manager  
T 01223 596957  
M 07880 059044  
E diane.gray8@nhs.net



**Carrie Abbs**  
Clinical Learning  
Environment Manager  
T 01223 596954  
M 07825 863574  
E carmel.abbs@nhs.net



**Caragh Urquhart**  
Clinical Learning  
Environment Lead  
M 07507 891632  
E caragh.urquhart@nhs.net



**Karen Flitton**  
Clinical Learning  
Environment Lead  
M 07904 968539  
E karen.flitton@nhs.net

Our Vision

To be the best we can be and to be a great place to work in order to improve the quality of services provided to patients in the east of England.

Quality lies at the heart of what we do and we operate according to the values set out in the NHS Constitution.



Our Core Functions



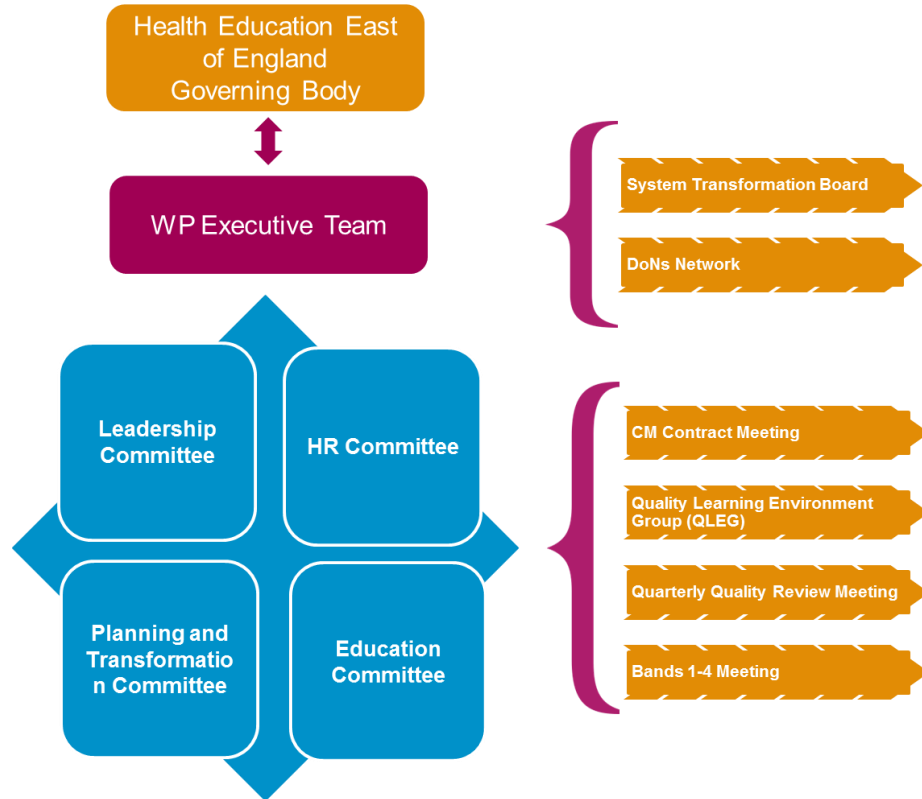
Developing people  
for health and  
healthcare

www.hee.nhs.uk



## Our Structure

Our governance structure operates in a provider led system.



## Cambridgeshire & Peterborough Workforce Priorities

The Cambridgeshire and Peterborough Workforce Partnership 2016-17 priorities are being reviewed in line with the Department of Health Mandate, the Health Education England Delivery Plan and the formation of Sustainability and Transformation Plans (STPs).

Workforce Transformation	Education	Leadership
Grow Your Own	Improvements to the Clinical Learning Environment	Aligned to system transformation programme
Primary Care		
Integrated Care	Talent for care	

“We pride ourselves on the team’s ability to work in partnership with stakeholders to ensure that the quality of training delivered is of a high standard and that the right workforce is planned to support the local system. This is essential for great patient care”.

**Lucy Dennis**

**Head of Cambridgeshire and Peterborough Workforce Partnership**