

*Developing people  
for health and  
healthcare*

**Health Education East of England GMC National Training  
Survey Analysis 2015: Programme Group Report**

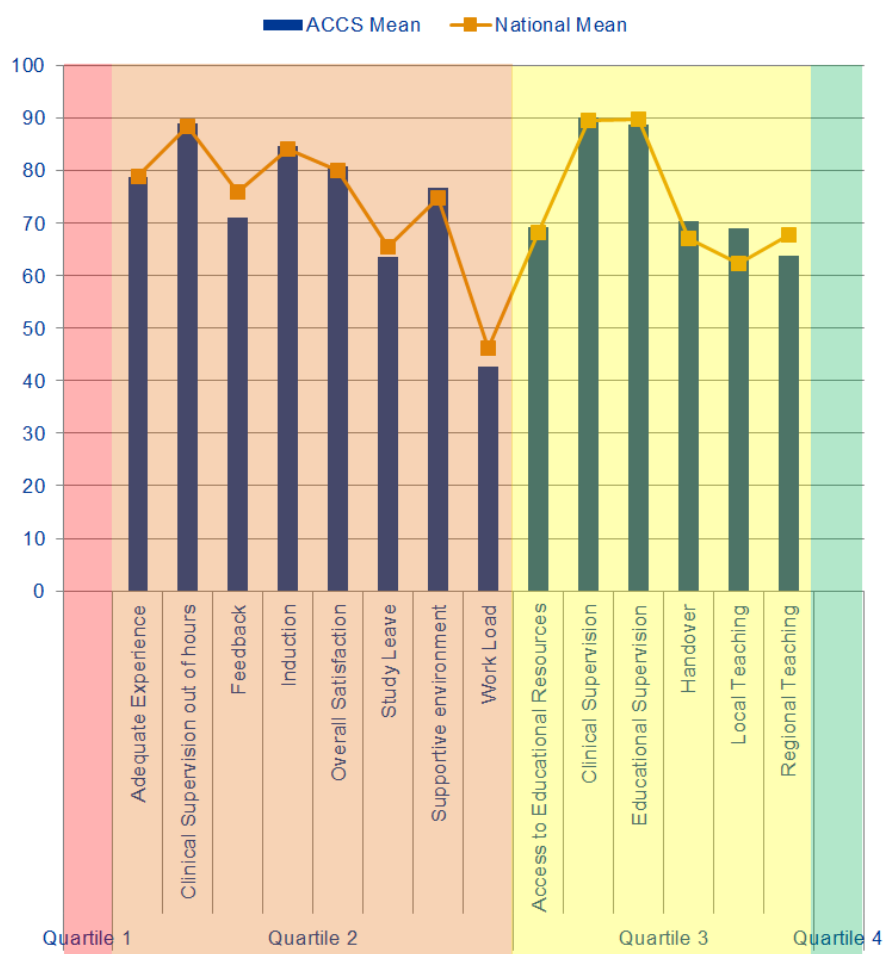
# Core Programmes



## Acute Care Common Stem

### Indicator Means

Quartiles	Indicator	ACCS Mean	National Mean
Quartile 1	Adequate Experience	78.63	78.73
	Clinical Supervision out of hours	88.79	88.23
	Feedback	70.96	75.89
Quartile 2	Induction	84.56	83.98
	Overall Satisfaction	80.71	80.00
	Study Leave	63.52	65.38
	Supportive environment	76.57	74.79
	Work Load	42.64	46.16
Quartile 3	Access to Educational Resources	69.17	68.11
	Clinical Supervision	90.02	89.46
	Educational Supervision	88.71	89.68
	Handover	70.35	67.00
	Local Teaching	68.87	62.24
	Regional Teaching	63.81	67.71
Quartile 4			

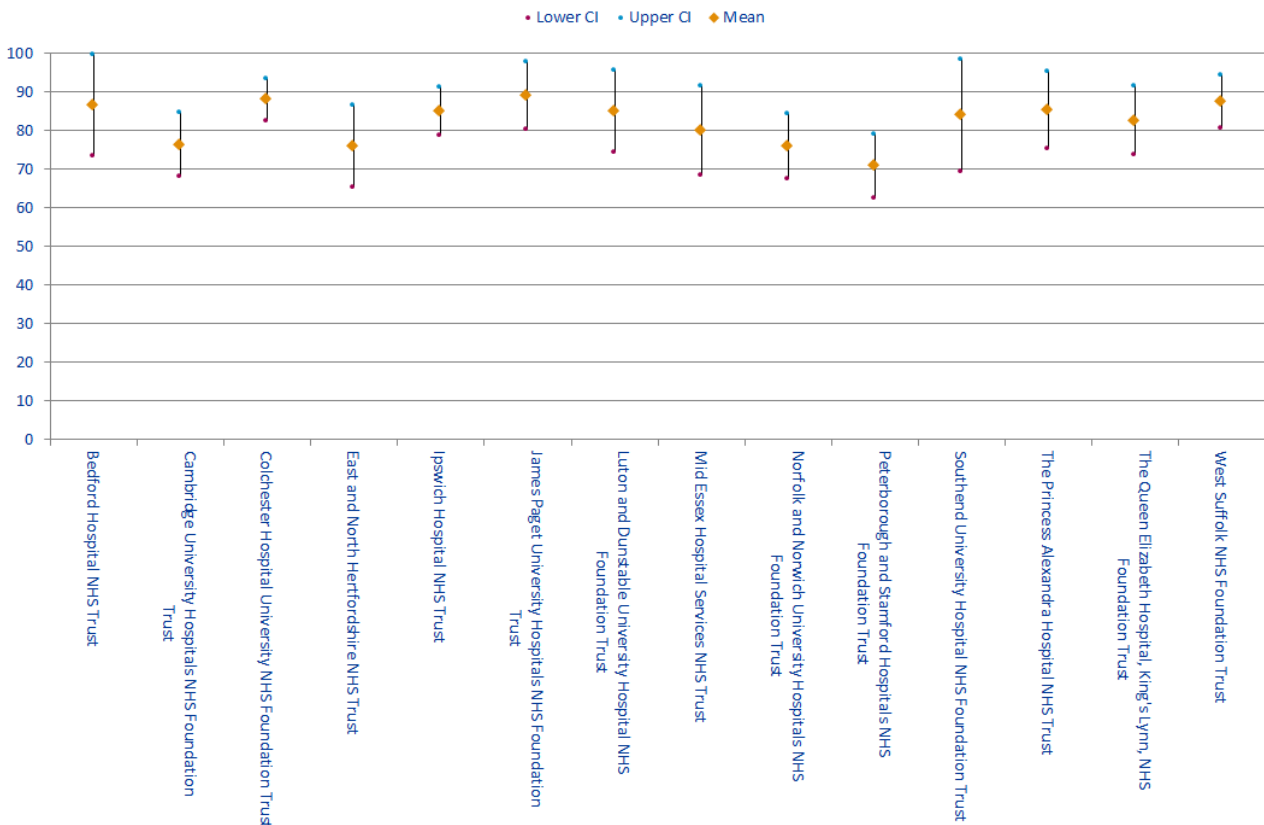


# Acute Care Common Stem

## Outliers

Trusts	Feedback	Access to Educational Resources	Educational Supervision	Work Load	Supportive environment	Adequate Experience	Induction	Clinical Supervision out of hours	Clinical Supervision	Overall Satisfaction
Bedford Hospital NHS Trust										
Cambridge University Hospitals NHS Foundation Trust			B							
Colchester Hospital University NHS Foundation Trust										
East and North Hertfordshire NHS Trust										
Ipswich Hospital NHS Trust										
James Paget University Hospitals NHS Foundation Trust							A			
Luton and Dunstable University Hospital NHS Foundation Trust										
Mid Essex Hospital Services NHS Trust										
Norfolk and Norwich University Hospitals NHS Foundation Trust						B				
Peterborough and Stamford Hospitals NHS Foundation Trust				B					B	
Southend University Hospital NHS Foundation Trust										
The Princess Alexandra Hospital NHS Trust										
The Queen Elizabeth Hospital, King's Lynn, NHS Foundation Trust										
West Suffolk NHS Foundation Trust										

## Overall Satisfaction Means



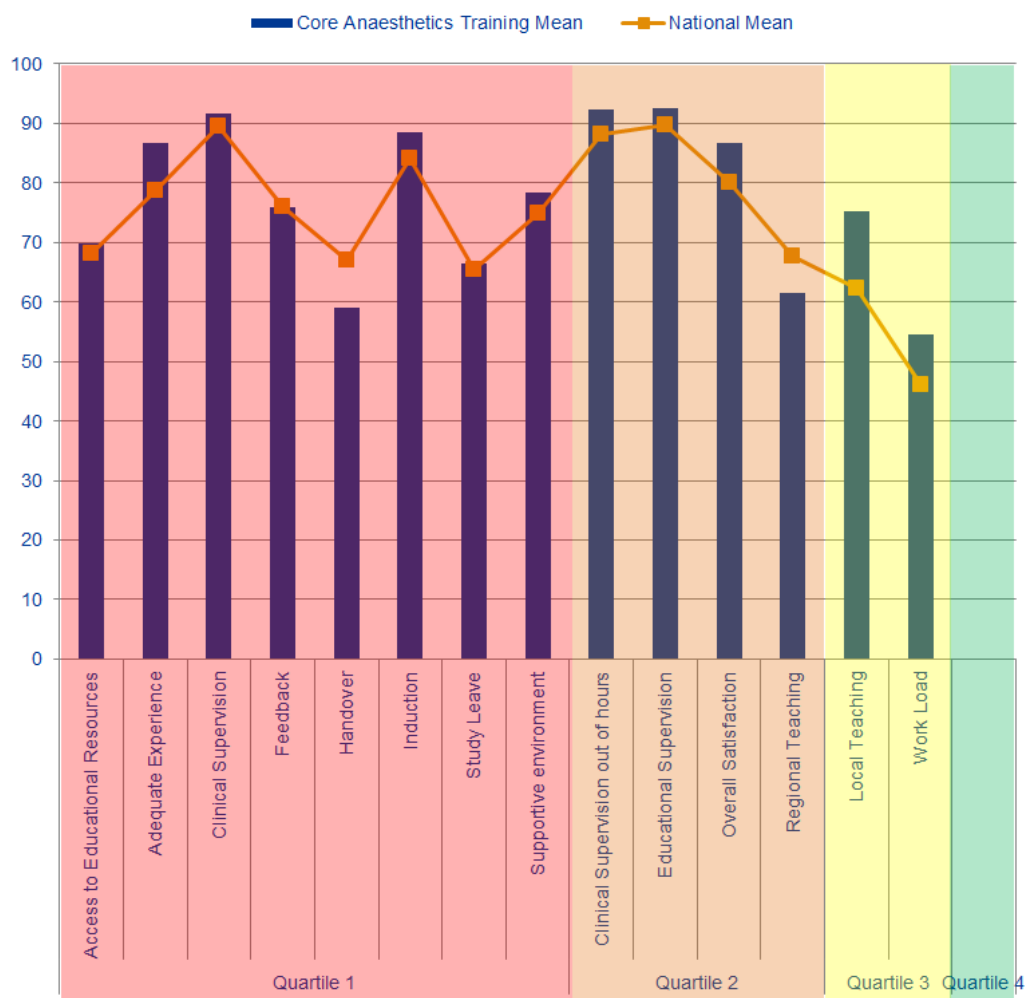
# Acute Care Common Stem

## Outlier Trends

Trusts	Patient Safety			Educational Development					Training Environment	GREEN OUTLIERS			RED OUTLIERS			2014 to 2015 CHANGE ↑ BETTER → STATUS QUO ↓ WORSE				
	Overall Satisfaction	Clinical Supervision	Clinical Supervision out of hours Handover	Induction	Work Load	Educational Supervision	Adequate Experience	Feedback	Local Teaching	Regional Teaching	Study Leave	Supportive environment	Access to Educational Resources	2013	2014		2015	2013	2014	2015
Colchester														1						
Mid Essex																		1		
Southend																				
Princess Alexandra																				
Ipswich														2						
James Paget																	1	1		
Norfolk and Norwich			2															2	1	
Queen Elizabeth																				
Cambridge University														1	2		1		1	
Peterborough and Stamford																	1		3	
Luton And Dunstable																1	1	1		
West Suffolk														1						
East and North Herts																	1			
Bedford														1				1		
<b>Total</b>														3	5	1	5	6	5	↓ ↑

## Core Anaesthetics

### Indicator Means



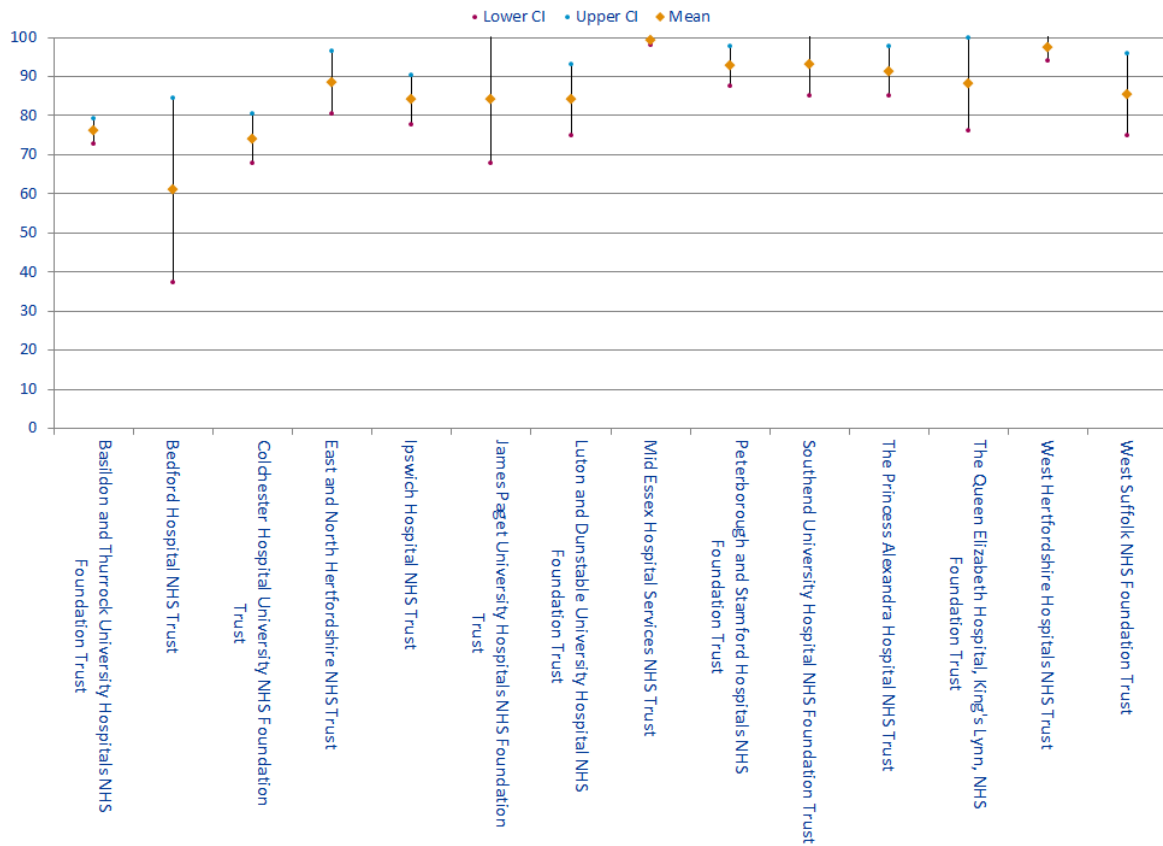
Quartiles	Indicator	Core Anaesthetics Training Mean	National Mean
Quartile 1	Access to Educational Resources	69.83	68.11
	Adequate Experience	86.57	78.73
	Clinical Supervision	91.6	89.46
	Feedback	75.85	75.89
	Handover	59.06	67
	Induction	88.38	83.98
	Study Leave	66.49	65.38
	Supportive environment	78.43	74.79
Quartile 2	Clinical Supervision out of hours	92.29	88.23
	Educational Supervision	92.5	89.68
	Overall Satisfaction	86.63	80
	Regional Teaching	61.58	67.71
Quartile 3	Local Teaching	75.16	62.24
	Work Load	54.49	46.16
Quartile 4			

# Core Anaesthetics

## Outliers

Trusts	Overall Satisfaction	Clinical Supervision	Clinical Supervision out of hours	Handover	Induction	Adequate Experience	Supportive environment	Work Load	Educational Supervision	Access to Educational Resources	Feedback	Local Teaching	Regional Teaching	Study Leave
Basildon and Thurrock University Hospitals NHS Foundation Trust	B	B	B	B								B		
Bedford Hospital NHS Trust	B									B	B			
Colchester Hospital University NHS Foundation Trust	B				B	B				B				
East and North Hertfordshire NHS Trust														
Ipswich Hospital NHS Trust													B	
James Paget University Hospitals NHS Foundation Trust				A										
Luton and Dunstable University Hospital NHS Foundation Trust									B					
Mid Essex Hospital Services NHS Trust	A	A								A				
Peterborough and Stamford Hospitals NHS Foundation Trust		B											B	B
Southend University Hospital NHS Foundation Trust										A		A		
The Princess Alexandra Hospital NHS Trust												A		
The Queen Elizabeth Hospital, King's Lynn, NHS Foundation Trust				A				A						
West Hertfordshire Hospitals NHS Trust	A	A										A		
West Suffolk NHS Foundation Trust													B	

## Overall Satisfaction Means



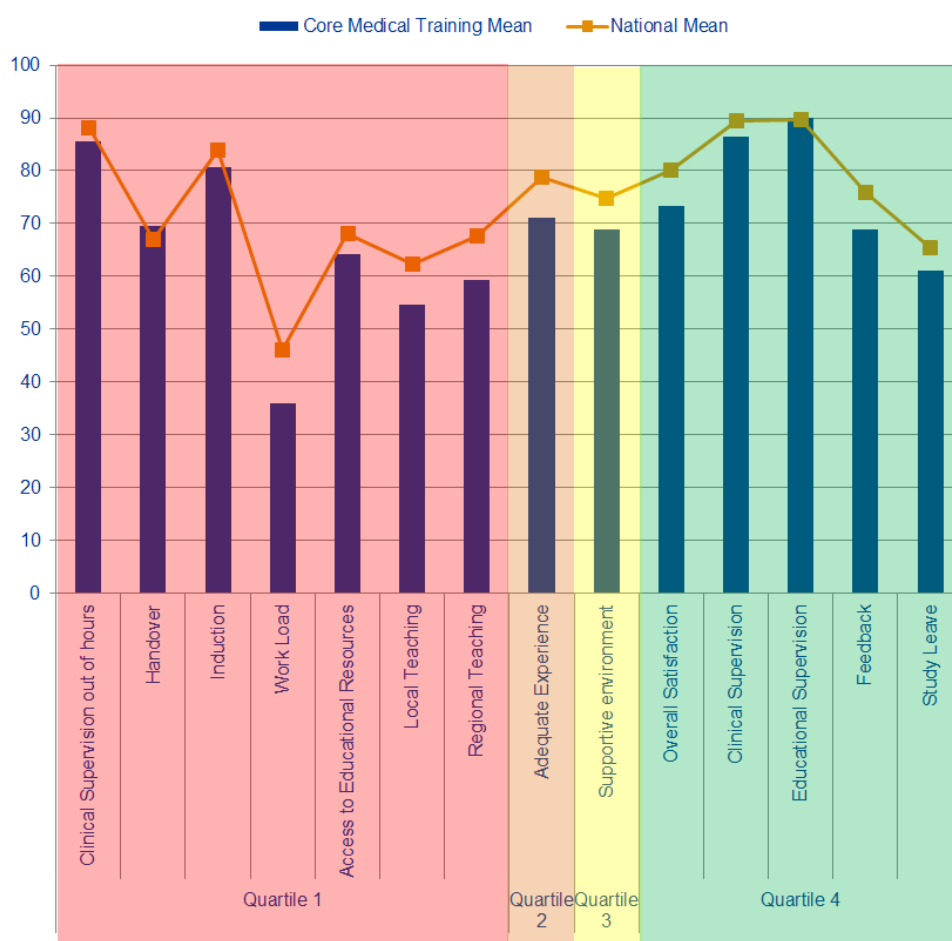
## Core Anaesthetics

### Outlier Trends

Trusts	Overall Satisfaction	Patient Safety			Educational Development					Training Environment	GREEN OUTLIERS			RED OUTLIERS			2014 to 2015 CHANGE ↑ BETTER → STATUS QUO ↓ WORSE			
		Clinical Supervision out of hours	Handover	Induction	Work Load	Educational Supervision	Adequate Experience	Feedback	Local Teaching	Regional Teaching	Study Leave	Supportive environment	Access to Educational Resources	2013	2014	2015		2013	2014	2015
Basildon and Thurrock	2							2									2	1	4	
Colchester											2							1	4	
Mid Essex	3										3		2	2	3					
Southend								2						1	2			1		
Princess Alexandra													1		1		1	2		
Ipswich																				1
James Paget															1		1	2		
West Suffolk																				1
Queen Elizabeth													2	2	2		1	2		
Peterborough and Stamford										2			1					1	3	
Luton And Dunstable																				1
East and North Herts													1							
West Herts															3		3	1		
Bedford	2							2			2						1	8	3	
<b>Total</b>													7	5	12		9	19	17	↑↑

## Core Medical Training

### Indicator Means



Quartiles	Indicator	Core Medical Training Mean	National Mean
Quartile 1	Clinical Supervision out of hours	85.46	88.23
	Handover	69.63	67
	Induction	80.77	83.98
	Work Load	36.02	46.16
	Access to Educational Resources	64.18	68.11
	Local Teaching	54.73	62.24
	Regional Teaching	59.36	67.71
Quartile 2	Adequate Experience	71.05	78.73
Quartile 3	Supportive environment	68.95	74.79
Quartile 4	Overall Satisfaction	73.36	80
	Clinical Supervision	86.42	89.46
	Educational Supervision	89.96	89.68
	Feedback	68.94	75.89
	Study Leave	61.01	65.38

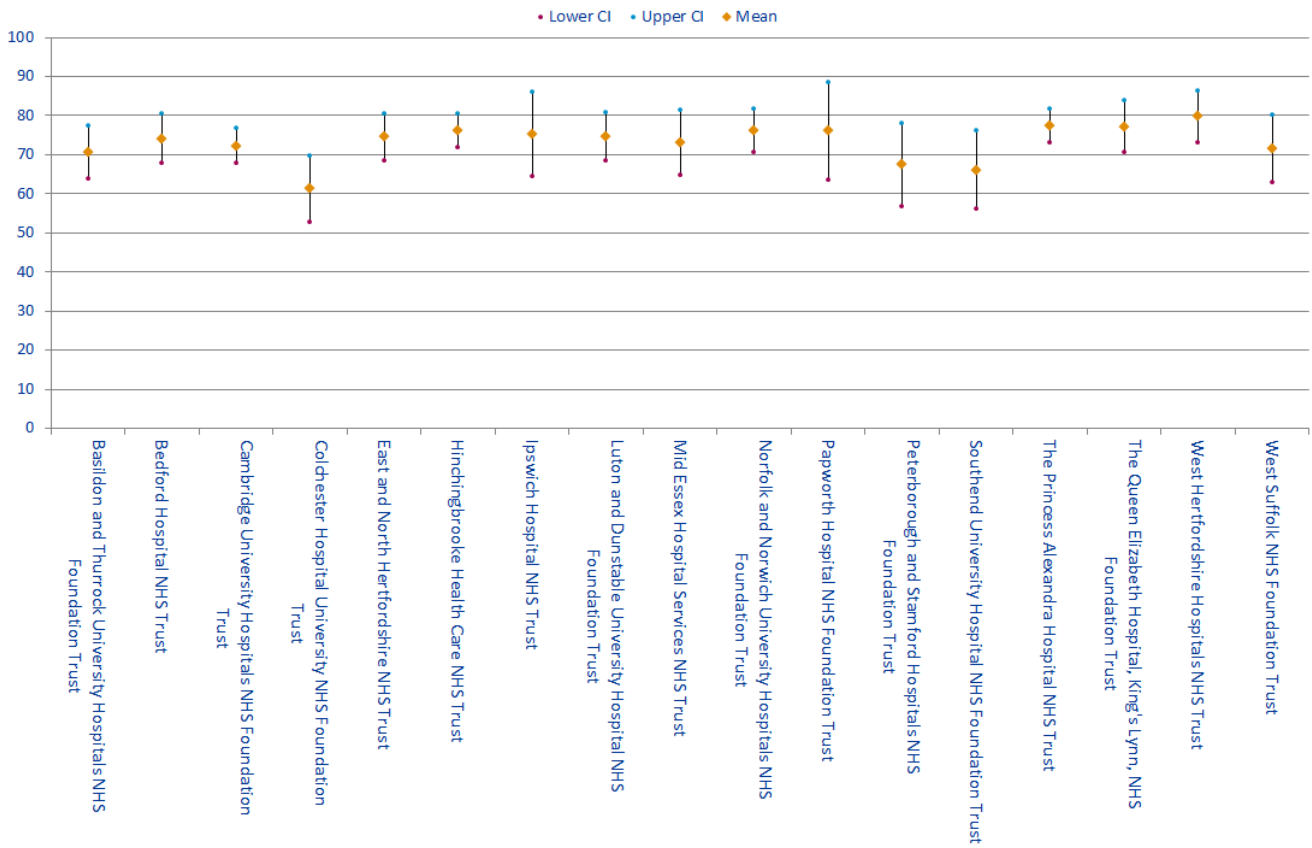


# Core Medical Training

## Outliers

Trusts	Overall Satisfaction	Clinical Supervision	Clinical Supervision out of hours	Handover	Induction	Adequate Experience	Supportive environment	Work Load	Educational Supervision	Access to Educational Resources	Feedback	Local Teaching	Regional Teaching	Study Leave
Basildon and Thurrock University Hospitals NHS Foundation Trust														
Bedford Hospital NHS Trust														
Cambridge University Hospitals NHS Foundation Trust														
Colchester Hospital University NHS Foundation Trust	B			A	B					B				
East and North Hertfordshire NHS Trust														
Hinchingbrooke Health Care NHS Trust														
Ipswich Hospital NHS Trust														B
Luton and Dunstable University Hospital NHS Foundation Trust														
Mid Essex Hospital Services NHS Trust														
Norfolk and Norwich University Hospitals NHS Foundation Trust														
Papworth Hospital NHS Foundation Trust						B								
Peterborough and Stamford Hospitals NHS Foundation Trust														
Southend University Hospital NHS Foundation Trust			B											
The Princess Alexandra Hospital NHS Trust										B				
The Queen Elizabeth Hospital, King's Lynn, NHS Foundation Trust										B				B
West Hertfordshire Hospitals NHS Trust														
West Suffolk NHS Foundation Trust					A									B

## Overall Satisfaction Means



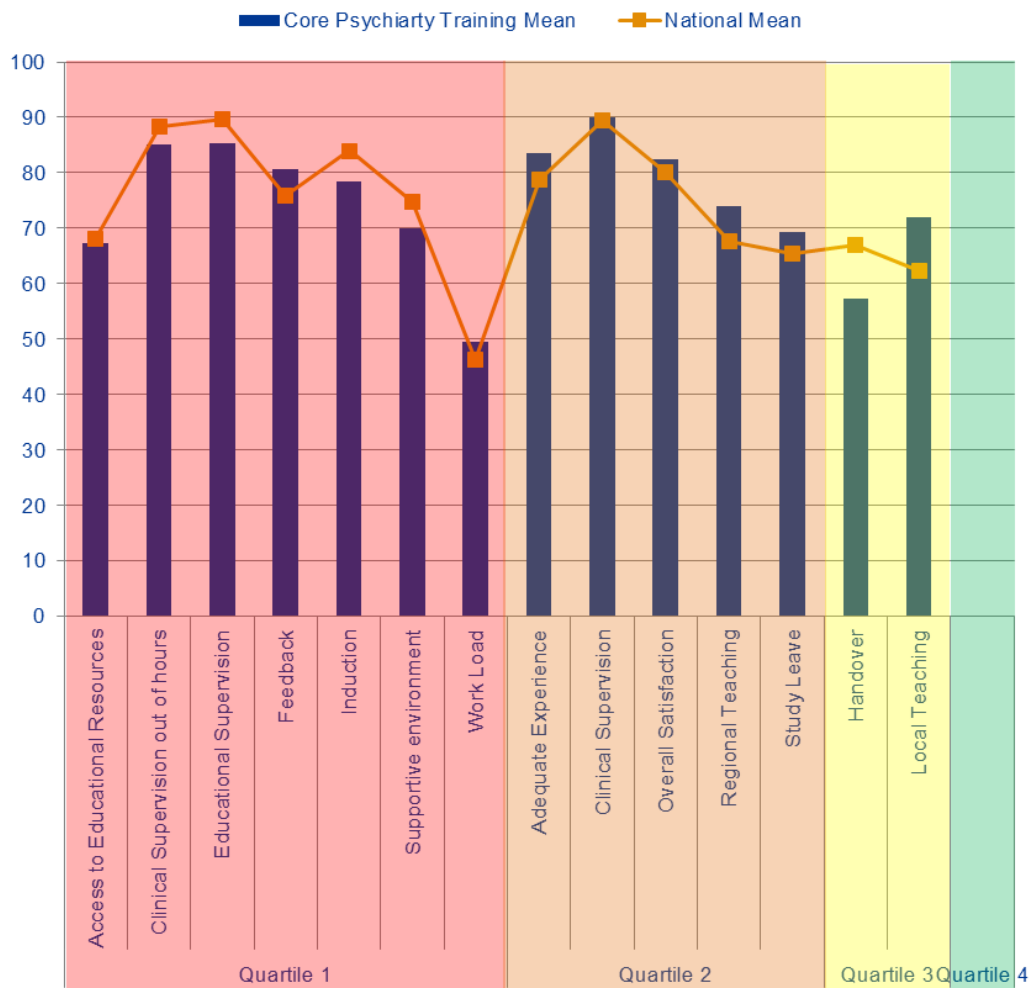
## Core Medical Training

### Outlier Trends

Trusts	Patient Safety			Educational Development					Training Environment	GREEN OUTLIERS			RED OUTLIERS			2014 to 2015 CHANGE ↑ BETTER → STATUS QUO ↓ WORSE																		
	Overall Satisfaction	Clinical Supervision	Clinical Supervision out of hours	Handover	Induction	Work Load	Educational Supervision	Adequate Experience	Feedback	Local Teaching	Regional Teaching	Study Leave	Supportive environment	Access to Educational Resources	2013		2014	2015	2013	2014	2015													
Basildon and Thurrock																																		
Colchester				2	2									1	1			1	3															
Hinchingbrooke																								1										
Mid Essex															1			1																
Southend																								1	1									
Princess Alexandra																								1	1									
Ipswich																									2	1								
Norfolk and Norwich																										1								
West Suffolk				3																					1	1								
Queen Elizabeth																										2								
Cambridge University																										1								
Papworth																										1	3	6	1					
Peterborough and Stamford																											1	1						
Luton And Dunstable																											2	2						
East and North Herts																												1	1					
West Herts																											1							
Bedford																												1						
<b>Total</b>																												7	5	2	12	14	10	↓ ↑

# Core Psychiatry Training

## Indicator Means



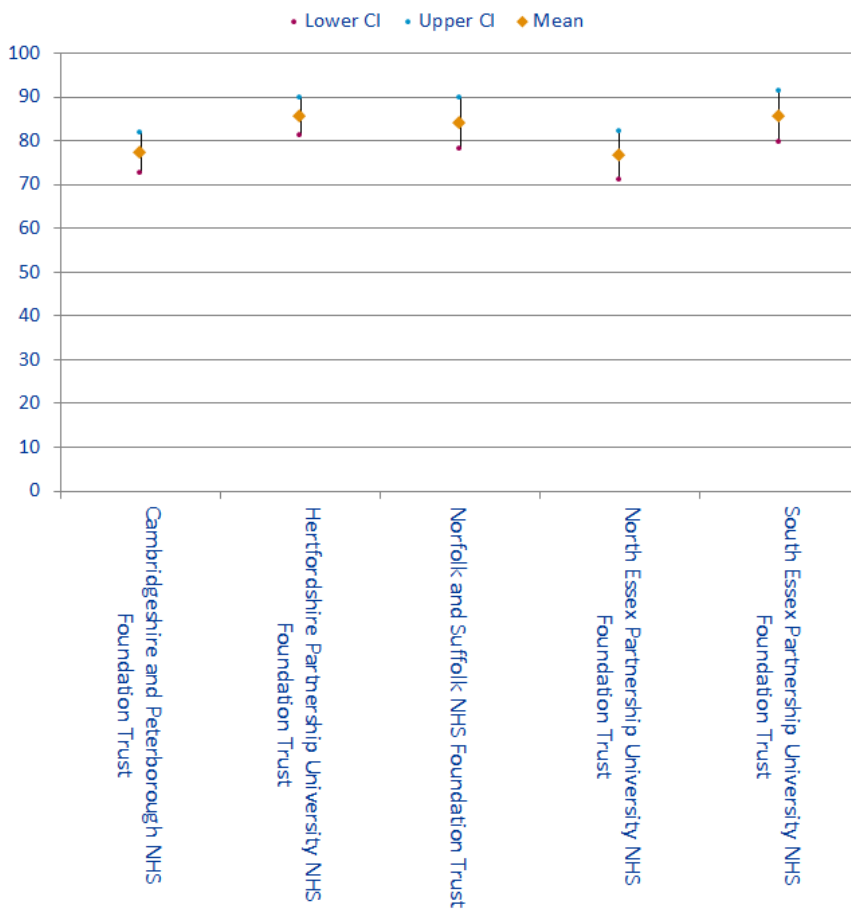
Quartiles	Indicator	Core Psychiatry Training Mean	National Mean
Quartile 1	Access to Educational Resources	67.22	68.11
	Clinical Supervision out of hours	85.16	88.23
	Educational Supervision	85.22	89.68
	Feedback	80.54	75.89
	Induction	78.51	83.98
	Supportive environment	70.05	74.79
	Work Load	49.55	46.16
Quartile 2	Adequate Experience	83.44	78.73
	Clinical Supervision	90.07	89.46
	Overall Satisfaction	82.32	80
	Regional Teaching	74.06	67.71
	Study Leave	69.3	65.38
Quartile 3	Handover	57.36	67
	Local Teaching	71.96	62.24
Quartile 4			

# Core Psychiatry Training

## Outliers

Trusts	Study Leave	Regional Teaching	Local Teaching	Feedback	Access to Educational Resources	Educational Supervision	Work Load	Supportive environment	Adequate Experience	Induction	Handover	Clinical Supervision out of hours	Clinical Supervision	Overall Satisfaction
Cambridgeshire and Peterborough NHS Foundation Trust	B											B		
Hertfordshire Partnership University NHS Foundation Trust				B										
Norfolk and Suffolk NHS Foundation Trust														
North Essex Partnership University NHS Foundation Trust					B				B					
South Essex Partnership University NHS Foundation Trust														

## Overall Satisfaction Means



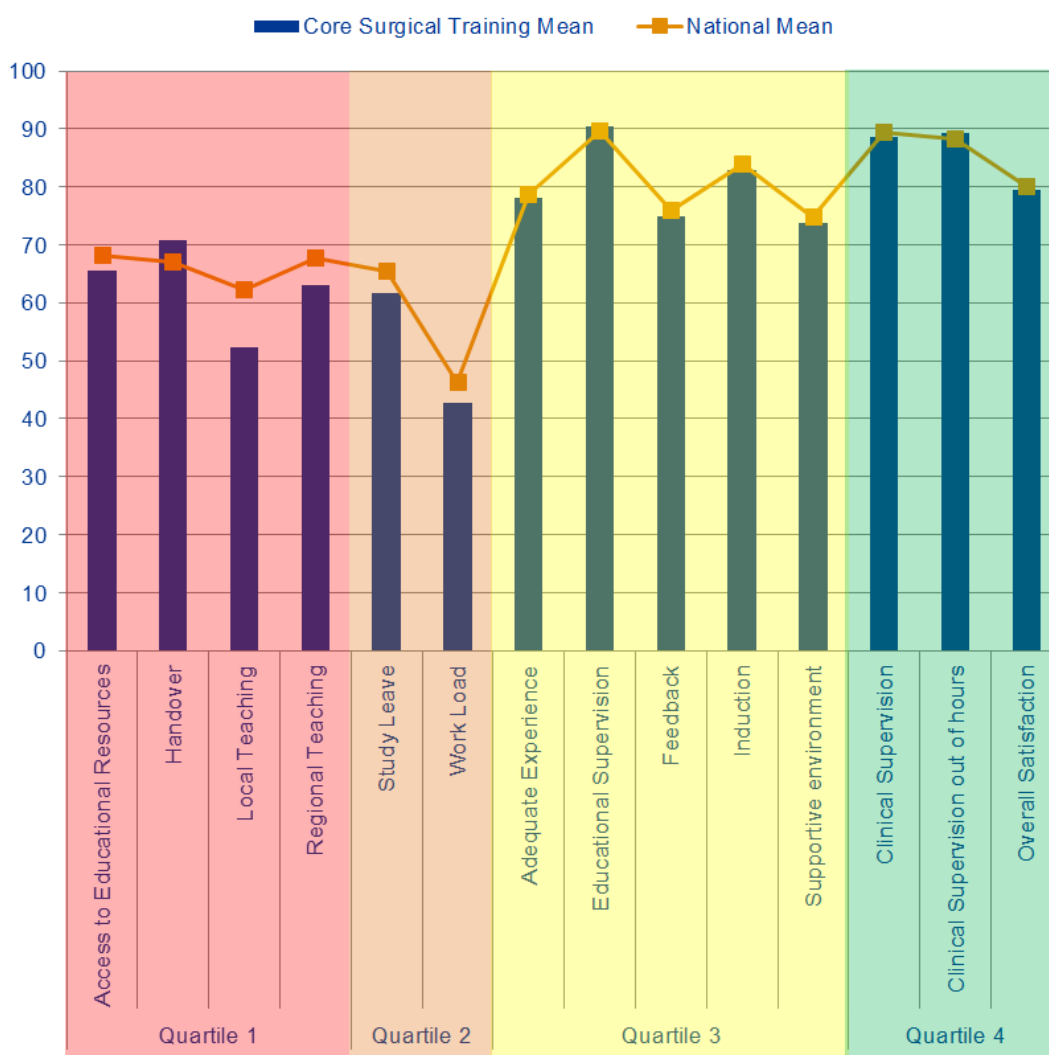
# Core Psychiatry Training

## Outlier Trends

Trusts	Overall Satisfaction	Patient Safety			Educational Development					Training Environment	GREEN OUTLIERS			RED OUTLIERS			2014 to 2015 CHANGE ↑ BETTER → STATUS QUO ↓ WORSE		
		Clinical Supervision out of hours	Handover	Induction	Work Load	Educational Supervision	Adequate Experience	Feedback	Local Teaching	Regional Teaching	Study Leave	Supportive environment	Access to Educational Resources	2013	2014	2015		2013	2014
North Essex												3				1	1	3	
South Essex																			
Norfolk and Suffolk																1			
Cambridgeshire and Peterborough																			5
Herts Parts																3	1	1	
<b>Total</b>													0	0	0	5	2	9	→↓

## Core Surgical Training

### Indicator Means



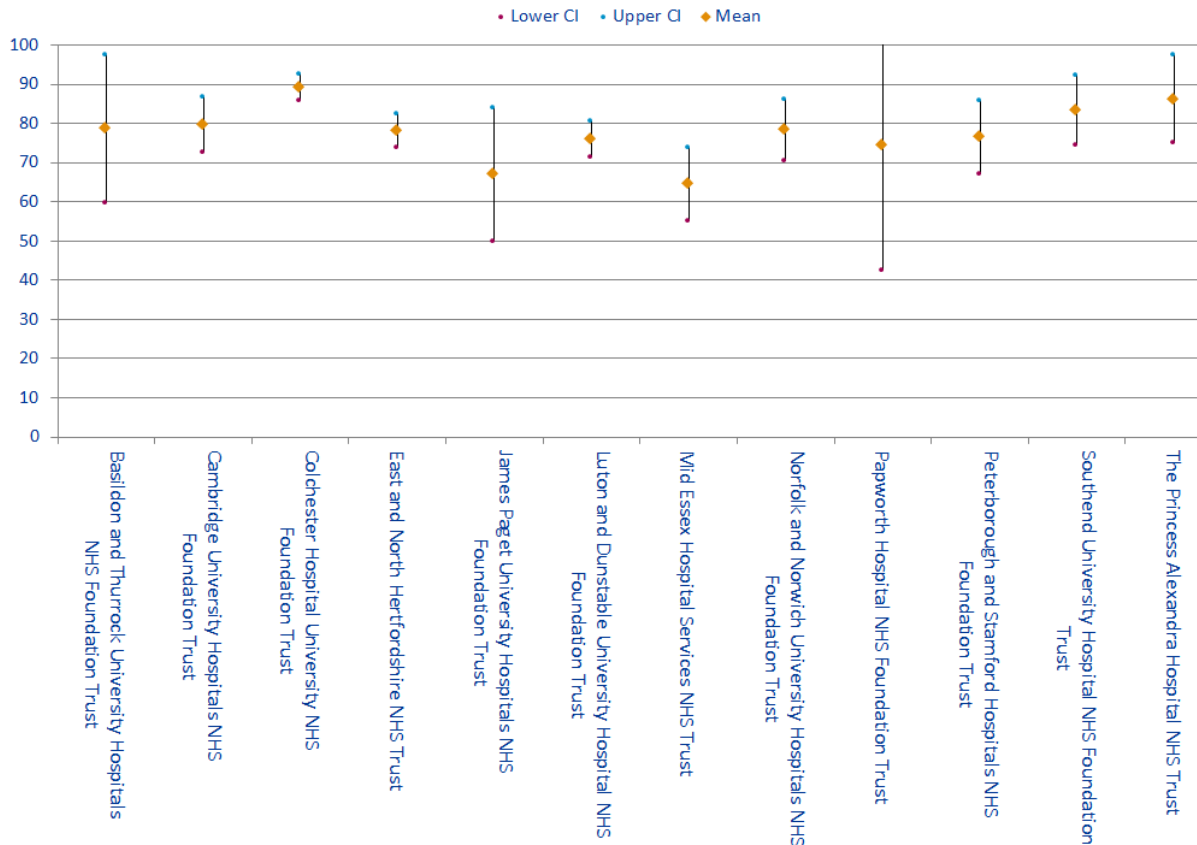
Quartiles	Indicator	Core Surgical Training Mean	National Mean
Quartile 1	Access to Educational Resources	65.47	68.11
	Handover	70.83	67
	Local Teaching	52.23	62.24
	Regional Teaching	62.95	67.71
Quartile 2	Study Leave	61.77	65.38
	Work Load	42.73	46.16
Quartile 3	Adequate Experience	78	78.73
	Educational Supervision	90.5	89.68
	Feedback	74.94	75.89
	Induction	82.8	83.98
Quartile 4	Supportive environment	73.85	74.79
	Clinical Supervision	88.49	89.46
	Clinical Supervision out of hours	89.25	88.23
	Overall Satisfaction	79.56	80

# Core Surgical Training

## Outliers

Trusts	Overall Satisfaction	Clinical Supervision	Clinical Supervision out of hours Handover	Induction	Adequate Experience	Supportive environment	Work Load	Educational Supervision	Access to Educational Resources	Feedback	Local Teaching	Regional Teaching	Study Leave
Basildon and Thurrock University Hospitals NHS Foundation Trust	A			A	A	A							A
Cambridge University Hospitals NHS Foundation Trust													
Colchester Hospital University NHS Foundation Trust				A		A							
East and North Hertfordshire NHS Trust													
James Paget University Hospitals NHS Foundation Trust													
Luton and Dunstable University Hospital NHS Foundation Trust		B				B	B						
Mid Essex Hospital Services NHS Trust	B				B				B	B			
Norfolk and Norwich University Hospitals NHS Foundation Trust													B
Papworth Hospital NHS Foundation Trust				A			B						
Peterborough and Stamford Hospitals NHS Foundation Trust													
Southend University Hospital NHS Foundation Trust													
The Princess Alexandra Hospital NHS Trust										A			

## Overall Satisfaction Means



## Core Surgical Training

### Outlier Trends

Trusts	Overall Satisfaction	Patient Safety				Educational Development					Training Environment	GREEN OUTLIERS			RED OUTLIERS		2014 to 2015 CHANGE ↑ BETTER → STATUS QUO ↓ WORSE			
		Clinical Supervision	Clinical Supervision out of hours	Handover	Induction	Work Load	Educational Supervision	Adequate Experience	Feedback	Local Teaching	Regional Teaching	Study Leave	Supportive environment	Access to Educational Resources	2013	2014		2015	2013	2014
Basildon and Thurrock		2												1	2	5				
Colchester																2		1		
Mid Essex																				4
Southend																				
Princess Alexandra																1				
James Paget														1						
Norfolk and Norwich																				1
Cambridge University																				
Papworth																1	2		1	
Peterborough and Stamford																				
Luton And Dunstable															1			1	3	
East and North Herts																				
<b>Total</b>														2	3	9	2	2	9	↑ ↓