

# INTENSIVE CARE MEDICINE MANAGEMENT COURSE

**FOR:**

New consultants and advanced trainees in ICM

**WHERE:**

St. Anne's College, Oxford

**WHEN:**

17<sup>th</sup>-18<sup>th</sup> June, 2019

**COST:**

£350

The Faculty of  
**Intensive Care Medicine**

 **intensive care  
society**  
care when it matters

Enquiries or to book: [ukcitcourse@gmail.com](mailto:ukcitcourse@gmail.com)



# Do you really feel prepared to be a consultant? Transitioning strategies for the new Intensivist

## WHY YOU:

- Gain confidence in the non-technical and non-clinical arena
- Build and lead successful teams
- Understand yourself in the context of the rest of your career
- Set up and enjoy the rest of your life as an Intensivist

## PROGRAMME:

Understanding the role of personality	Differentiating Management and Leadership
Defining your own clinical leadership style	Conflict management
Negotiation skills	Performance management
Organisational culture	Achieving change
Managing legal issues	Time management and other survival skills
Goal setting for the future	Teamwork

## FACULTY:

International Faculty

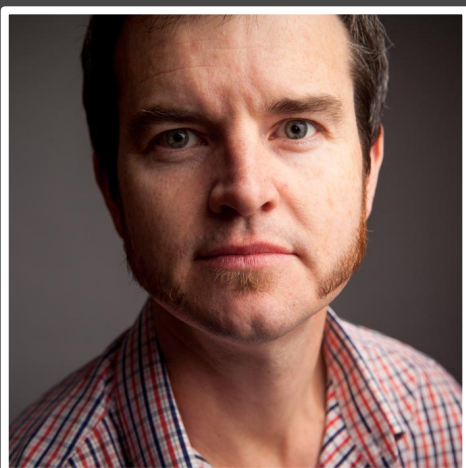
## FACULTY



Carl Waldmann has been a Consultant in ICM and Anaesthesia at the Royal Berkshire Hospital since joining as Director of ICU in 1986. He is the current dean of the FICM. His passion has been setting up and running an ICU follow-up clinic in Reading. From 2007 to 2009 he was President of the ICS, editor of Care of the Critically Ill and until 2004 the editor of JICS. He is a member of the PACT editorial board. Carl also is club doctor for Leyton Orient FC.



Jonathan Goodall is a consultant intensivist at Salford Royal NHS Foundation Trust. Alongside clinical medicine his major interests have always been teaching and training. He has recently taken on the role of careers lead for the FICM. He recently completed a Masters in 'Managing Medical Careers' at Brighton University: his dissertation 'ICM: New Era, New Careers New Guidance' examined the motivation of doctors choosing to train in the specialty.



Owen Roodenburg is Eastern Health Director of Intensive Care Services and previously Deputy Director of Intensive Care at The Alfred Hospital, Melbourne. An associate Professor with Monash University, he is passionate about high quality medical education, mentoring, and advises government on medical supervision. Owen has developed and runs many innovative leadership and mentoring programs.



## FACULTY



Kim Vidhani is an Anaesthetist and Intensivist - UK and Australian trained. Ongoing interest in organisational behaviour related to healthcare. Original CIT faculty: accredited to deliver MBTI, EQi2.0 and Belbin Team roles. Research in difficult airway management. Travelling and vegetarian dining a passion!



Jon Westbrook is a Consultant Neuroanaesthetist and Neurointensivist at Oxford University Hospitals. He is an Honorary Senior Lecturer and helps to run a research program in Subarachnoid Haemorrhage. He has been a Clinical Manager for many years (including Theatres/Anaesthetics & Critical Care) and is now Divisional Director for Neurosciences, Orthopaedics, Trauma and Specialist Surgery at OUH. He is a graduate of the NHS Leadership Academy Program for Executive Leadership.



Danny Bryden is a Consultant Intensivist in Sheffield. She has a law degree and masters in medical law, this supports her main interests of medical professionalism and educational assessment in relation to team working and decision making in patient care. She is on the editorial board of BJA Education commissioning articles on professional issues relevant to intensive care medicine, and also works as an associate for the GMC and as a clinical assessor for NCAS.

## FACULTY



Jonathan Chantler has been a consultant in Critical Care and Anaesthesia for 17 years. In that time he has been a College Tutor, a Training Program Director and a Regional Advisor overseeing significant regional and national changes in post-graduate training. He is Director of the Oxford Undergraduate and Foundation ALERT courses. His other teaching activities include trying to explain how ventilators work, how to interview well and how to become a better teacher.



The Faculty of  
**Intensive Care Medicine**



# PROGRAMME

## DAY 1 –MANAGING OTHERS

- Ice Breaker & Course Overview
- Transitioning
- You are that Consultant now
  - Transitioning period – The right way & the wrong way
- Managing nursing relationships
- Simulation - Managing under pressure
  - A taste of the real thing
- Learning to negotiate - Get what you want
- Politics & meetings - How to make an impact
- How to initiate change - Make it happen
- Legal issues - What you were never told
- **Dinner for Faculty and Delegates**

## DAY 2 – MANAGING YOURSELF

Understand yourself – Your psychological type (Meyer-Briggs)

- Leadership – What does it mean
- Conflict Management – Resolve, survive and win
- Interacting with others
- The work life balance – There is such a thing
- Managing Performance
  - “The Third Part” – What will it look like for you