

# Bedfordshire and Luton Dental Foundation Training Scheme



**Spring and Summer Term Programme 2022-2023**





# Bedfordshire and Luton Dental Foundation Training Scheme

## Bedford Learning and Education Centre

Bedford Hospital NHS Trust, Kempston Road, Bedford, MK42 9DJ

Tel: 01234 355122

## East of England Region

Regional Postgraduate Dental Dean

**Malcolm Brady**

Regional Dental Account Manager

**Patti Bradhsw**

Regional Dental Faculty Support Officer

**Peta Wright**

Regional Dental Faculty Support Officer

**Charlene Wright**

Postgraduate Centre Manager

**Rosa Lombardi**

Scheme Administrator

**Chandima Johnson**

Training Programme Director

**Peter Cranfield**

PhD BDS DIC FCGDent PgCert Med Ed

The Mews, 22 Bancroft, Hitchin, Herts  
SG5 1JW

07956 523148

[peter.cranfield@hee.nhs.uk](mailto:peter.cranfield@hee.nhs.uk)



# Bedfordshire and Luton Dental Foundation Training Scheme

## Index to Spring and Summer Term Programme

East of England Region	2
Index	3
List of Study Days for Spring and Summer Term	4
Details of Study Days	7
Calendar for 2022-2023	28



# Spring and Summer Term

## Venues and Subjects

<b>Friday 3rd February</b>	Online Study Day	
■	_____	
<b>Friday 10th February</b>	Milestone 2	
■	_____	<i>Learning and Education Centre, Bedford Hospital</i>
<b>Mon - Fri 12 -17th February</b>	Practice Exchanges	
■	_____	<i>Bedfordshire and Luton DFT Practices</i>
<b>Friday 24th February</b>	Reports from Practice Exchanges Interesting Cases from our Educational Supervisors	
■	_____	<i>Learning and Education Centre, Bedford Hospital</i>
<b>Tuesday 7th March</b>	Practical Oral Surgery	
■	_____	<i>COMET Centre Luton and Dunstable Hospital</i>
<b>Friday 10th March</b>	Practical Endodontics	
■	_____	<i>EndoMishra, Baldock</i>
<b>Friday 17th March</b>	Dental Prosthetics Part 1	
■	_____	<i>Virtual Remote Learning Platform - Links to be confirmed.</i>
<b>Friday 24th March</b>	Dental Prosthetics Part 2	
■	_____	<i>Virtual Remote Learning Platform - Links to be confirmed.</i>
<b>Friday 5th May</b>	Implants Occlusion	
■	_____	<i>Learning and Education Centre, Bedford Hospital</i>
<b>Thursday 11th May</b>	Restorative Care with Composite Resins	
■	_____	<i>Prince William Education Centre, Kettering General Hospital</i>
<b>Friday 12th May</b>	Toothwear and Advanced Restorative Care	
■	_____	<i>Learning and Education Centre, Bedford Hospital</i>

<b>Thursday 25th May</b>	Beyond Foundation - Day One Legal Aspects of Dental Practice and Employment Insurance and Personal Financial Protection	<i>Ground Floor Training Room, Raleigh Centre, Bedford</i>
<b>Friday 26th May</b>	Beyond Foundation - Day Two Business and Personal Taxation for Employment and Self-employment Professionalism in a Challenging World.	<i>Learning and Education Centre, Bedford Hospital</i>
<b>Friday 9th June</b>	Audit Presentations	<i>Learning and Education Centre, Bedford Hospital</i>
<b>Friday 16th June</b>	Personality Profiling and Behaviour Change	<i>Virtual Remote Learning Platform - Links to be confirmed.</i>
<b>Friday 23rd June</b>	Online Study Day	
<b>Friday 30th June</b>	Milestone 3	<i>Learning and Education Centre, Bedford Hospital</i>
<b>Friday 7th July</b>	Regional Showcase	<i>Radisson Blue Hotel, Stansted</i>

## Important Dates and Deadlines

Milestone 2 APLAN Submission	Friday, 13 January 2023
Milestone 2 APLAN Review Complete	Friday, 27 January 2023
IRCP	Wednesday, 22 February 2023
Start of Spring Term	Friday, 3 March 2023
Milestone 2 Presentation	Friday, 3 March 2023
eLiFT APLAN Upload Complete	Friday 7 April 2023

eLiFT APLAN Marking Complete	Friday 5 May 2023
Start of Summer Term	Friday, 5 May 2023
Audit Submission	Friday, 12 May 2023
Milestone 3 APLAN Submission	Friday, 2 June 2023
Audit Presentation	Friday, 9 June 2023
Milestone 3 APLAN Review Complete	Friday, 16 June 2023
Milestone 3 Presentation	Friday, 30 June 2023
End of Term	Friday, 7 July 2022
FRCP	Tuesday, 25 July 2022



# Friday 3rd February

## Day Session

Online Study Day

CPD Hrs = 6

*Please use this online study day to prepare for your Milestone 2 presentation, and complete online work for IRCP.*





# Friday 10th February

Learning and Education Centre, Bedford Hospital

## Day Session

09.30

Milestone 2

CPD Hrs = 6

### Foundation Dentists

*This session will be used for Foundation Dentists to present their Milestone 2 case.*

#### Objectives

- *"Knowledge and experience of the power of self and peer reflection in personal development."*
- *Improvement in the provision of patient care through use of reflection, analysis and planning.*

#### Learning Content

- *Assess and treatment plan appropriately.*
- *Reflect regarding their own clinical work and if required use personal learning needs to improve outcomes for patients.*

#### GDC Outcomes: A C D



16.30

End





# Mon - Fri 12 -17th February

## Bedfordshire and Luton DFT Practices

### Two Sessions

#### Practice Exchanges

CPD Hrs = 6

#### Foundation Dentists

*The Aim of the sessions is for FDs to see and experience different modalities of providing dental care and to learn how to assess the merits of different systems.*

*During this week, everyone in the group will visit two different Training Practices, and will also have the opportunity to share their own practice with members of the group.*

*You must arrange half day visits for yourself to the practices of two DFT Group members. Hopefully FDs will arrange to visit your practice.*

*There are report forms for you to complete when you have been visited and when you are the visitor. There is a session later for you to give a presentation about your visits to the rest of the group.*

#### Objectives

- *To view and experience dental care provision in a wide range of situations.*
- *Explore and evaluate different systems of healthcare delivery.*
- *Evaluate alternative methods of management and organisation.*

#### Learning Content

- *Describe different systems for dental care provision.*
- *Be able to identify systems of effective management.*
- *Understand how local demographic conditions can lead and inform practice management and organisation*

#### GDC Outcomes: A B C D





# Friday 24th February

Learning and Education Centre, Bedford Hospital

## Afternoon Session

09.30

Reports from Practice Exchanges

CPD Hrs = 3

### Foundation Dentists

*The Aim of the session is for FDs to share reports and knowledge gained from practice exchanges*

#### Objectives

- *To learn about dental care provision in a wide range of situations.*
- *Explore and evaluate different systems of healthcare delivery.*
- *Evaluate alternative methods of management and organisation*

#### Learning Content

- *Describe different systems for dental care provision.*
- *Be able to identify systems of effective management.*
- *Understand how local demographic conditions can lead and inform practice management and organisation*

#### GDC Outcomes: A B C D



12.30

Lunch



# Friday 24th February

Learning and Education Centre, Bedford Hospital

## Morning Session

13.30

Interesting Cases from our Educational Supervisors

CPD Hrs = 3

### Educational Supervisors

*The aim of the session is for FDs to see a wide range of cases to be challenged to come up with treatment plans for a very wide range of dental conditions*

#### Objectives

- *To appreciate that different practitioners see clinical situations and solutions in different ways from each other.*
- *To learn different and new ways of providing dental care for patients .*

#### Learning Content

- *Consider and evaluate new and different modalities of dental treatment provision.*
- *Compare different methods and techniques of providing dental care.*
- *Display an increased level of understanding of many dental problems and conditions.*

#### GDC Outcomes: A B C D



16.30

End



# Tuesday 7th March

## COMET Centre Luton and Dunstable Hospital

### am or pm Session

09.30

### Practical Oral Surgery

CPD Hrs = 3

**Rob Bunyan**

Oral Surgeon

*Allow participants to become more competent in oral surgery procedures undertaken in primary care, including the use of flaps and bone removal where appropriate.*

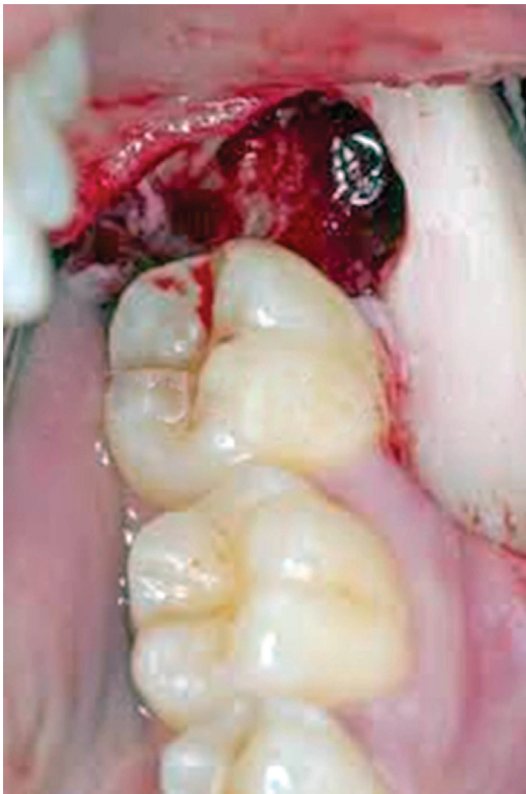
#### Objectives

- Explain the importance of patient medical history for oral surgery procedures as part of the overall pre-operative assessment processes and the relevance of National guidelines in this context, and when to refer to secondary care.
- Define local anaesthetic pharmacology, appropriate use of local anaesthetics and potential complications and their management.
- Provide practical training in the principles of assessment, flap design, bone removal and sectioning of teeth that require this approach for removal, including discussion of instrument selection (the surgical armamentarium) to undertake minor oral surgery procedures in general dental practice.
- Identify appropriate post-operative care and pain management for oral surgery patients

#### Learning Content

- Evaluate and demonstrate application in the diagnosis, treatment and aftercare of patients requiring exodontia in general dental practice.
- Demonstrate greater skill and knowledge of methods of providing simple oral surgery and the instruments used to aid this.
- List the relevant guidance relating to oral surgery care in general dental practice.

#### GDC Outcomes: A C



16.30

End



# Friday 10th March

EndoMishra,Baldock

## Day Session

09.30

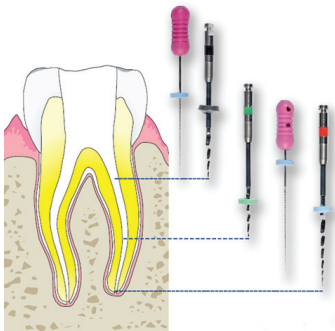
### Practical Endodontics

CPD Hrs = 6

#### Shashi Mishra

Endodontic Specialist

*To give Foundation Dentists greater confidence, knowledge and technical ability in the diagnosis and treatment of apical and pulpal pathology. To allow Foundation Dentists to understand the factors involved in restoring the endodontically treated tooth.*



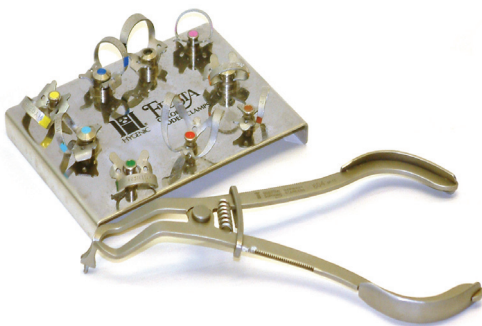
#### Objectives

- Review current concepts in the prevention of apical and pulpal pathology.
- Describe the pathophysiology of the pulp-dentine complex and the symptoms of pulp-dentine pathology.
- Undertake practical training to have a greater knowledge of the principles of endodontic access, canal preparation, canal irrigation, obturation and the restoration of the endodontically treated tooth.

#### Learning Content

- Demonstrate an enhanced knowledge and ability to manage patients with endodontic problems.
- Demonstrate greater skill in the treatment of endodontically involved teeth.
- Evaluate how to restore the endodontically treated tooth.

#### GDC Outcomes: A D



16.30

End



Friday 17th March

Virtual Remote Learning Platform - Links to be confirmed.

## Afternoon Session

14.00

### Dental Prosthetics Part 1

CPD Hrs = 3

#### Upen Patel

Associate Professor & Honorary Consultant

*To provide a solid set of principles in complete denture fabrication focusing on correct diagnosis, impressions, bite registration trial insertion and definitive insertion with aftercare.*

#### Objectives

- Define the principles of provision of complete dentures in a general dental practice setting.
- Describe the planning, design prescription and delivery of effective complete prostheses, including communication with the dental laboratory team, to provide effective patient care.
- Identify the methods of obtaining and interpreting diagnostic casts and gathering relevant information in formulating a diagnosis, prognosis and treatment plan for patients requiring complete dentures.

#### Learning Content

- Recognise key features in planning for complete dentures and demonstrate the ability for trouble shooting as required.
- Can demonstrate how to take excellent impressions for complete dentures and their importance (based on the initial diagnosis of each edentulous case).
- Perform accurately inter-arch relationship records and know when to take a facebow record, including assessment of tooth shape and size.

#### GDC Outcomes: A D



17.00

End



# Friday 24th March

Virtual Remote Learning Platform - Links to be confirmed.

## Afternoon Session

14.00

### Dental Prosthetics Part 2

CPD Hrs = 3

#### Upen Patel

Associate Professor & Honorary Consultant

*To provide a solid set of principles in partial denture fabrication focusing on correct diagnosis, impressions, bite registration trial insertion and definitive insertion with aftercare.*

#### Objectives

- *Define the principles of provision of partial dentures in a general dental practice setting.*
- *Identify the methods of obtaining and interpreting diagnostic casts and gathering relevant information in formulating a diagnosis, prognosis and treatment plan for patients requiring partial dentures.*
- *Describe the planning, designing prescription and delivery of effective partial prostheses, including communication with the dental laboratory team, to provide effective patient care.*



#### Learning Content

- *Demonstrate how to take excellent impressions for partial dentures and their importance (based on the initial diagnosis of each case) as well as evaluate any issues.*
- *Recognise how to undertake partial denture design in a predictable and methodical manner.*
- *An ability for trouble shooting and to know what to do and when.*

#### GDC Outcomes: A D

17.00

End



Friday 5th May

Learning and Education Centre, Bedford Hospital

## Afternoon Session

09.30

Implants

CPD Hrs = 3

### Minesh Patel

Educational Supervisor

*To evaluate when the provision of dental implants may be appropriate, when patients should be referred and what things a GDP should be doing regarding maintenance and monitoring of dental implants.*

#### Objectives

- *Define aspects of implant dentistry sufficient to identify suitable cases for referral, give patients basic information and recognise failures.*
- *Examination and discussion of current National guidelines relating to the provision of dental implants and local arrangements for NHS provision.*
- *Exploration and revision of the role of the dental practitioner in offering treatment options, including those unavailable on the NHS.*

#### Learning Content

- *Be able to define the indication and contraindications for the provision of dental implants for patients.*
- *Recognise the role, responsibilities and expected actions of the General Dental Practitioner in the management and monitoring of implants.*
- *Clearly describe the processes, both biological and procedural, involved in the planning, placing and care of dental implants.*

#### GDC Outcomes: A B C D



12.30

Lunch





Friday 5th May

Learning and Education Centre, Bedford Hospital

## Morning Session

13.30

Occlusion

CPD Hrs = 3

### Paul Jackson

Educational Supervisor

*To build on the undergraduate knowledge and understanding of occlusion.*

#### Objectives

- *Define the ideal of the static and dynamic dentition.*
- *To understand the principles of conformation and reorganisation.*

#### Learning Content

- *Define the vocabulary used in the study of occlusion and recognise the concepts of occlusion and its importance in dental care.*
- *Identify how and when to use a facebow, carry out a comprehensive examination of the articulatory system, record RCP and recognise the relationship between these areas and the principles involved in occlusion.*

#### GDC Outcomes: A B C D



16.30

End



# Thursday 11th May

Prince William Education Centre, Kettering General Hospital

## Day Session

09.30

### Restorative Care with Composite Resins

CPD Hrs = 6

#### TBC

Educational Supervisor



*To assist Foundation Dentists in choosing which equipment and techniques to employ when directly restoring anterior teeth.*

#### Objectives

- *Evaluate the different composite systems available, the nature of their composition and how this may impact on material selection choice when restoring anterior teeth, alongside application of the knowledge of the anatomy of anterior teeth.*
- *Define current bonding techniques, matrixing systems, techniques for composite build-ups/placement, use of stents, alongside shaping and finishing protocols, to produce a life-like final restoration.*
- *Undertake a series of practical exercises to reinforce protocols associated with direct anterior restorations using a phantom head: class IV restoration and a direct composite veneer.*

#### Learning Content

- *Critique from improved knowledge and ability, when to use which technique for direct anterior restorations.*
- *To have enhanced practical skills in restoring anterior teeth, using a variety of techniques and equipment, to an appropriate form, to provide a functional and aesthetic restoration.*



#### GDC Outcomes: A C

16.30

End



Friday 12th May

Learning and Education Centre, Bedford Hospital

## Day Session

09.30

### Toothwear and Advanced Restorative Care

CPD Hrs = 6

#### Andrew Eder

Emeritus Professor of Restorative Dentistry and Dental Education

*To build on the undergraduate knowledge and understanding of toothwear and advanced restorative techniques.*

#### Objectives

- *To review current methods for restoring and replacing teeth in clinical practice.*
- *To be able to recognise and diagnose tooth surface loss and its causes.*

#### Learning Content

- *A better knowledge of tooth surface loss, its diagnosis, aetiology and treatment*
- *Understanding of advanced restorative techniques in relation to the provision of dental care in practice*

#### GDC Outcomes: A B C D



16.30

End



# Thursday 25th May

Ground Floor Training Room, Raleigh Centre, Bedford

## Day Session

09.30

**Beyond Foundation - Day One**  
**Legal Aspects of Dental Practice and**  
**Employment**

CPD Hrs = 3

**Hempsons Solicitors**



*The aim of these two days is to provide Foundation Dentists with the skills to better manage their own financial situations and also to understand the contractual arrangements either when applying for associate positions in general dental practice, or when working in a secondary care environment. This first session is about general dental practice and agreements and arrangements.*

12.30

Lunch

13.30

**Insurance and Personal Financial Protection**

CPD Hrs = 3

**Chase DeVere Wealth Management**



*This session is an introduction to the need for insurance and other methods of personal financial protection.*

16.30

End



# Friday 26th May

Learning and Education Centre, Bedford Hospital

## Morning Session

09.30

### Beyond Foundation - Day Two Business and Personal Taxation for Employment and Self-employment

CPD Hrs = 3

**Humphrey and Co**



*Self employment bring a whole host of issues to tax planning, so part of this session aims to help you with a move to self-employment.*

#### Objectives

- *Another part of the session will deal with working in a secondary care environment during Dental Core Training and the issues related to NHS employment.*
- *Identify the benefits and differences to different types of professional contracts and the associated financial responsibilities.*
- *Evaluate the methods of remuneration for dental employees and self-employed associates including the associated taxation, superannuation and income protection processes applicable within the UK.*

#### Learning Content

- *Describe the requirements for financial record keeping and management at an individual and practice level.*
- *Define the HMRC requirements for general dental practitioners at both a personal and practice level.*
- *Recognise the importance of good personal financial management regarding income, employment, income protection and pension provision, both within and outside the NHS.*

**GDC Outcomes: B**



End



# Friday 26th May

Learning and Education Centre, Bedford Hospital

## Afternoon Session

13.30

### Professionalism in a Challenging World.

CPD Hrs = 3

#### John A D Cameron

Chairman Dentists' Health Support Trust

*The aim of the session is to explore the effects of many societal solutions to the stresses of modern life in relation to the maintenance of personal professionalism and wellbeing.*

#### Objectives

- *To learn about challenges of life and the effects they may have on our health.*
- *To understand the effects of many common pathways of stress reduction.*

#### Learning Content

- *Be able to understand one's own personal stresses and recognise safe and practicable methods of coping with stress.*
- *Understand that professionalism covers more than dental practice.*

#### GDC Outcomes: ABCD



16.30

End



Friday 9th June

Learning and Education Centre, Bedford Hospital

## Day Session

09.30

Audit Presentations

CPD Hrs = 6

### Foundation Dentists

*The aim of the session is to review the outcomes of the audits of the members of the DFT group and to reflect upon what has been gained from the process.*

#### Objectives

- Learn about different methods of approaching clinical audit and its effect upon clinical performance
- Gain experience in offering constructive feedback to improve and enhance outcomes.
- Gain experience in presentation skills

#### Learning Content

- Design and implementation of clinical audits.
- Meeting ethical and contractual guidelines for clinical governance (as it relates to the provision of clinical audits).
- Improvement of performance by reflecting in a structured manner using the tool of clinical audit.

#### GDC Outcomes: A B C D



16.30

End



Friday 16th June

Virtual Remote Learning Platform - Links to be confirmed.

## Day Session

09.30

### Personality Profiling and Behaviour Change

CPD Hrs = 6

**Carol Brooking and Kit Maher**

Cascade

*The aims of the day are: to communicate more efficiently, to understand better how others think and feel, and to be more aware as to how people make decisions.*

#### Objectives

- To understand different personality including your own
- To realise how your personality may influence your interactions with others
- To recognize the importance and implications of managing different sorts of people
- To explore your communication skills

#### Learning Content

- Greater self-awareness
- Improved communication with patients and the dental team
- Strategies to manage different types of patients more effectively

#### GDC Outcomes: A B



16.30

End





Friday 23rd June

## Day Session

09.30

Online Study Day

CPD Hrs = 6



*Please use this online study day to prepare for your Milestone 2 presentation, and complete work for FRCP.*



# Friday 30th June

Learning and Education Centre, Bedford Hospital

## Day Session

09.30

Milestone 3

CPD Hrs = 6

### Foundation Dentists

*This session will be used for Foundation Dentists to present their Milestone 3 case.*

#### Objectives

- *To enhance self-assessment, reflection and feedback amongst participants.*
- *Provide an opportunity to learn how best to approach work in the future.*
- *Reflect on a wide range of complex clinical care plans.*

#### Learning Content

- *Assess and treatment plan appropriately.*
- *Reflect regarding their own clinical work and if required use personal learning needs to improve outcomes for patients.*

#### GDC Outcomes: A C D



16.30

End



# Friday 7th July

Radisson Blue Hotel, Stansted

## Day Session

09.30

Regional Showcase

CPD Hrs = 6

**Various - TBC**

*This is a whole day event celebrating educational achievements across the Midlands and East Region during the year 2021-22.*

*Full details of the programme and arrangements will follow in due course*

16.30

End



# Calendar 2022-2023

## January 2023

**Jan 20th - Feb 2nd**

**Friday 13th January**

**Friday 27th January**

Practice Visits – virtual or in person

*Milestone 2 – APLAN submission closes*

*Milestone 2 - APLAN review submission closes*

## February

**Friday 3rd February**

**Friday 10th February**

**12th-17th February**

**Wednesday 22nd February**

**Friday 24th February**

Study Day – online learning

Study Day – Milestone 2 - Bedford

Study Day – Practice Exchanges

IRCP

Study day at Bedford

## March

**Tuesday 7th March**

**Friday 10th March**

**Friday 17th March**

**Friday 24th March**

**April**

**Friday 7th April**

Study day at Luton and Dunstable

Study day at Baldock

Study Day – virtual platform

Study Day – virtual platform

*e-LiFT - APLAN FD Submission closes*

## May

**Friday 5th May**

**Thursday 11th May**

**Friday 12th May**

**Thursday 25th May**

**Friday 26th May**

Study day at Bedford

Study day at Kettering

Study day at Bedford

*Audit submission date*

Study day at Bedford

Study day at Bedford

## June

**Friday 2nd June**

**Friday 9th June**

**Friday 16th June**

**Friday 23rd June**

**Friday 30th June**

Milestone 3 – APLAN submission closes

Study day at Bedford

Study Day – virtual platform

*Milestone 3 - APLAN review submission closes*

Study day – online learning

Study Day – Milestone 2 - Bedford

## July

**Friday 7th July**

Regional Study Day - Stansted

**Wednesday 12th July**

FRCP

## **August**

**31st August**

End of DFT Year