

*Developing people  
for health and  
healthcare*

Health Education East of England GMC National  
Training Survey Analysis 2015: LETB Report

# Health Education East of England

# Narrative

## LETB Indicators

The Dashboard for Health Education East illustrates where it stands relative to the national mean and the other LETBs nationally participating in the GMC National Training Survey. Five of the 14 indicators lie in the first quartile, six in the second, three in the third and none in the fourth quartile. For two indicators, Feedback and Clinical Supervision Out of Hours, the East of England mean is above the national mean.

## Programme Type Indicators

The chart for Overall Satisfaction for each programme group illustrates where East of England's programme groups lie relative to each programme group's national mean. The quartiles were calculated for each programme group using the means of each LETB participating in the National Training Survey that runs that particular programme type. East of England has 17 programme types in the bottom quartile, 16 in the second quartile, ten in the third quartile and eight in the top quartile.

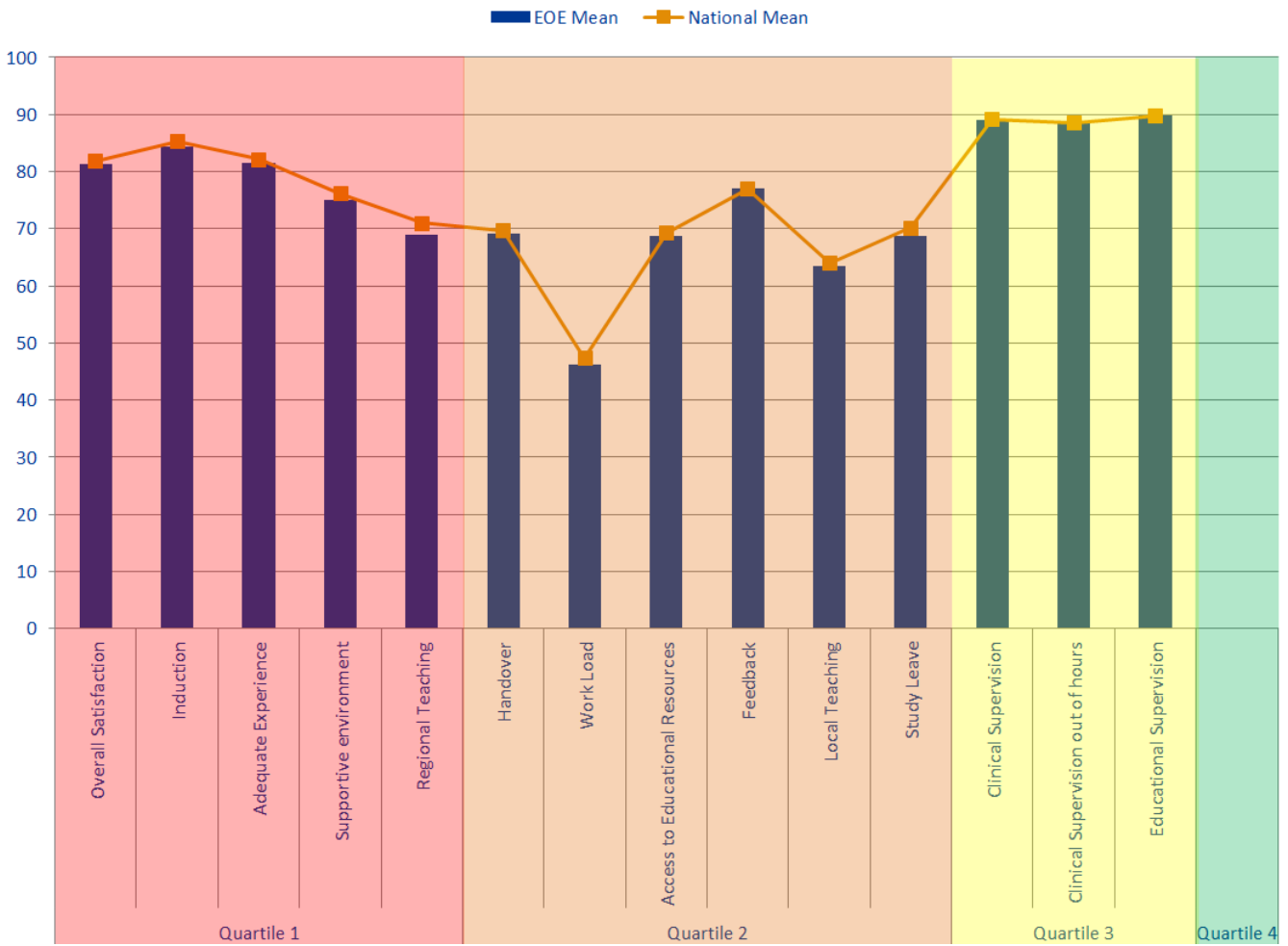
## Outliers

The outliers table shows East of England's outliers for each programme type that it delivers. The green areas represent above outliers while the red areas represent below outliers. A programme type is an outlier if it is in the top or the bottom of the GMC calculated quartiles and its confidence intervals do not overlap with those of the national mean. East of England has 50 negative outliers and 25 positive outliers. Clinical Pharmacology, Endocrinology and Diabetes Mellitus and Geriatric medicine have the highest number of red outliers with three each. Clinical Radiology and Psychiatry of Learning Difficulties have the most positive outliers with three each.

## Rankings

The rankings chart shows East of England's Overall Satisfaction ranking in comparison to the other LETBs. In the boxes above the chart is East of England's ranking and the total number of LETBs delivering the programme nationally.

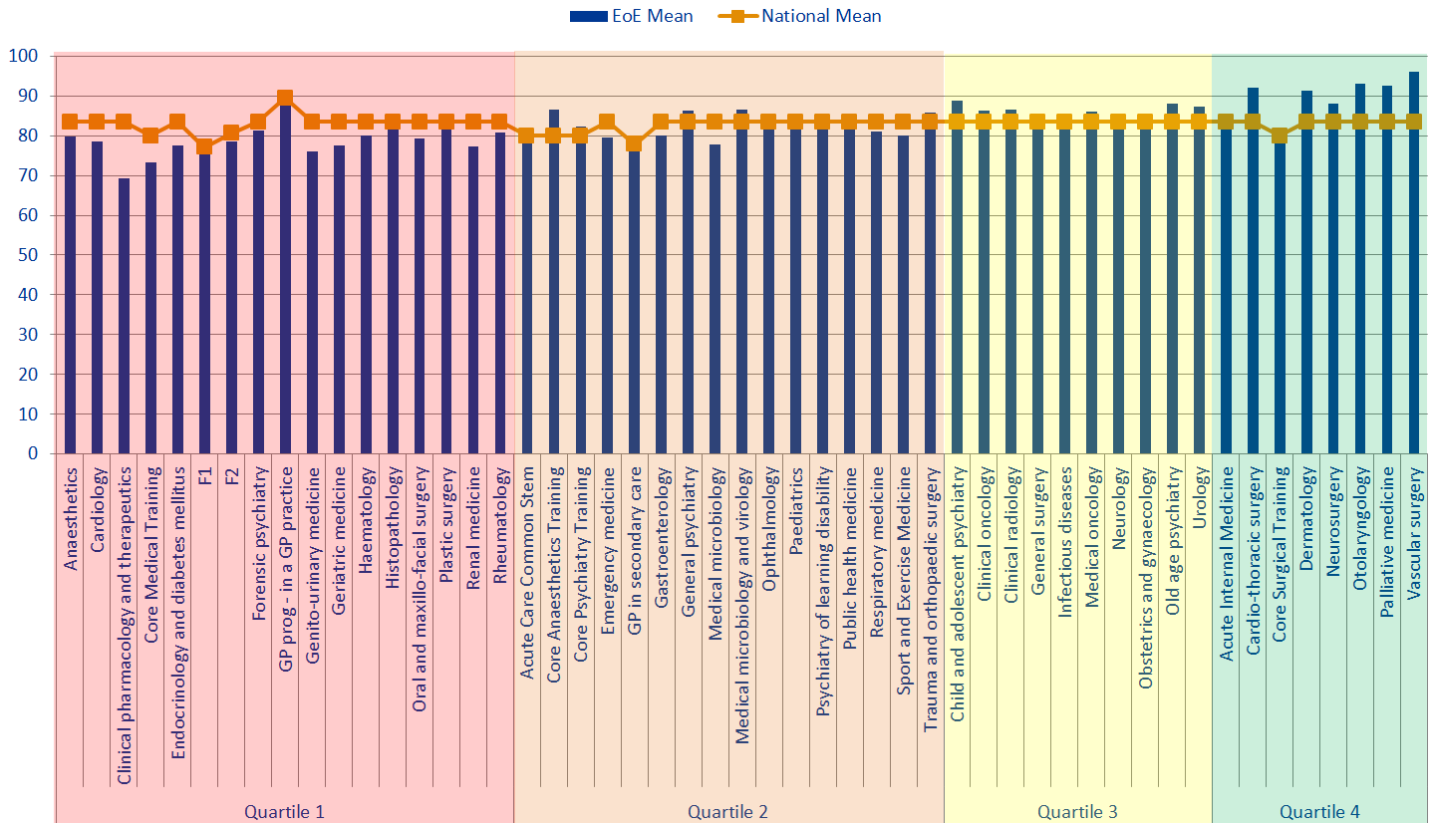
# Dashboard



Quartiles	Indicator	EOE Mean	National Mean
Quartile 1	Overall Satisfaction	81.23	81.74
	Induction	84.29	85.33
	Adequate Experience	81.52	82.14
	Supportive environment	75.05	76.14
	Regional Teaching	69.00	70.98
Quartile 2	Handover	69.19	69.67
	Work Load	46.12	47.25
	Access to Educational Resources	68.81	69.24
	Feedback	77.09	77.01
	Local Teaching	63.39	63.90
	Study Leave	68.72	70.17
Quartile 3	Clinical Supervision	89.06	89.19
	Clinical Supervision out of hours	88.54	88.44
	Educational Supervision	89.77	89.82
Quartile 4			

The quartiles are calculated from the means for every LETB that participated in the National Training Survey (NTS). The quartiles for each indicator are calculated separately. Therefore if a HEEoE indicator fell into the first quartile, then this means that it fell into the bottom 25% of LETBs for that indicator.

# Overall Satisfaction by Programme Type



Quartile	Programme Type	EoE Mean	National Mean
Quartile 1	Anaesthetics	79.89	83.49
	Cardiology	78.55	83.49
	Clinical pharmacology and therapeutics	69.33	83.49
	Core Medical Training	73.36	80
	Endocrinology and diabetes mellitus	77.56	83.49
	F1	76.55	77.14
	F2	78.50	80.57
	Forensic psychiatry	81.33	83.49
	GP prog - in a GP practice	88.47	89.5
	Genito-urinary medicine	76.00	83.49
	Geriatric medicine	77.60	83.49
	Haematology	80.00	83.49
	Histopathology	83.61	83.49
	Oral and maxillo-facial surgery	79.33	83.49
	Plastic surgery	81.90	83.49
	Renal medicine	77.20	83.49
	Rheumatology	80.71	83.49
	Quartile 2	Acute Care Common Stem	80.71
Core Anaesthetics Training		86.63	80.00
Core Psychiatry Training		82.32	80
Emergency medicine		79.54	83.49
GP in secondary care		77.72	77.89
Gastroenterology		80.00	83.49
General psychiatry		86.21	83.49
Medical microbiology		77.78	83.49
Medical microbiology and virology		86.67	83.49
Ophthalmology		85.42	83.49
Paediatrics		82.40	83.49
Psychiatry of learning disability		85.00	83.49
Public health medicine		83.11	83.49
Respiratory medicine		81.10	83.49
Sport and Exercise Medicine		80.00	83.49
Trauma and orthopaedic surgery		85.70	83.49

Quartile	Programme Type	EoE Mean	National Mean
Quartile 3	Child and adolescent psychiatry	88.80	83.49
	Clinical oncology	86.40	83.49
	Clinical radiology	86.48	83.49
	General surgery	83.84	83.49
	Infectious diseases	84.80	83.49
	Medical oncology	86.00	83.49
	Neurology	84.27	83.49
	Obstetrics and gynaecology	82.09	83.49
	Old age psychiatry	88.18	83.49
	Urology	87.33	83.49
Quartile 4	Acute Internal Medicine	82.00	83.49
	Cardio-thoracic surgery	92.00	83.49
	Core Surgical Training	79.56	80
	Dermatology	91.27	83.49
	Neurosurgery	88.00	83.49
	Otolaryngology	93.07	83.49
	Palliative medicine	92.67	83.49
	Vascular surgery	96.00	83.49

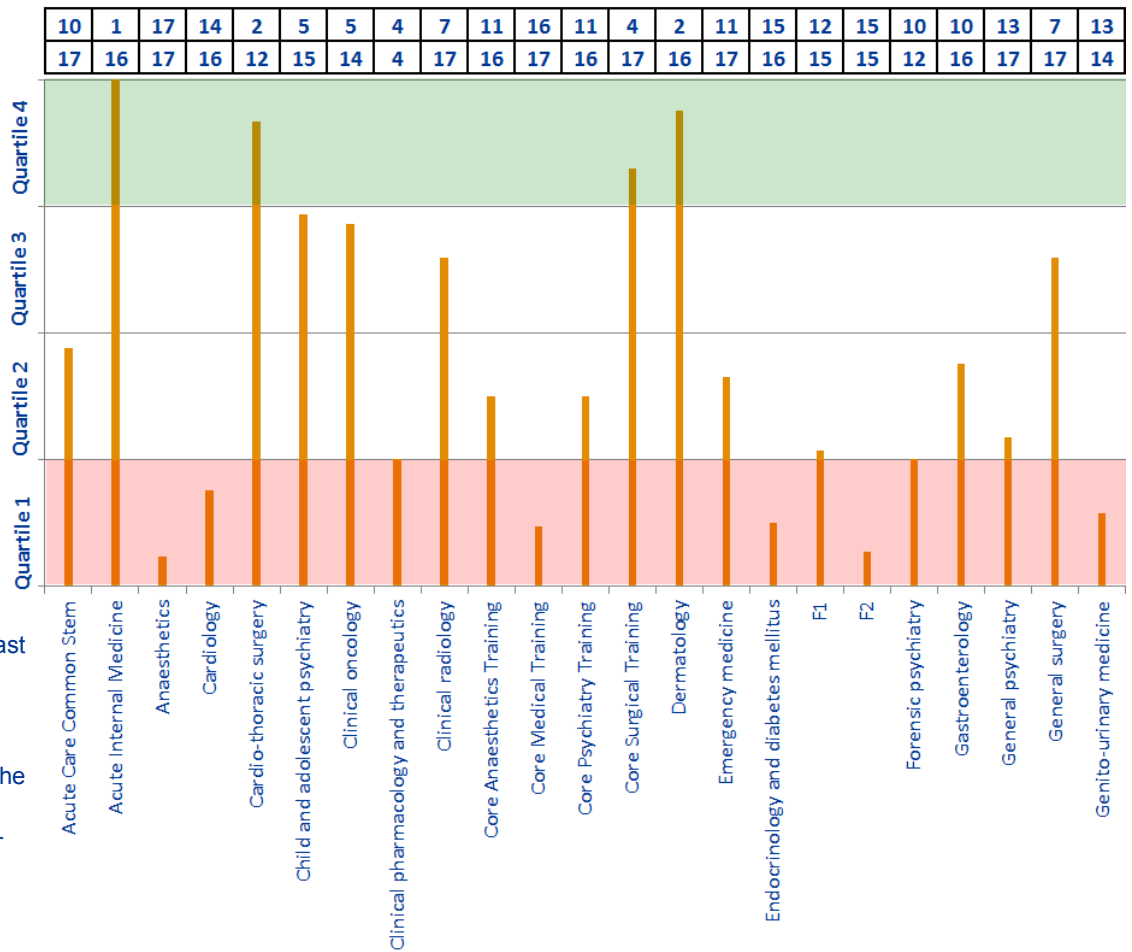
Quartiles are calculated from the means for every LETB that ran that programme type. The quartiles for each programme type are calculated separately. Therefore if HEEoE's programme type falls into the first quartile this means this programme has an overall satisfaction mean that fell within the bottom 25% of LETBs in the UK running this speciality.

# Programme Type Outliers

Programme Type	Overall Satisfaction	Patient Safety					Educational Development							Training Environment		Red	Green
		Clinical Supervision	Clinical Supervision out of hours	Handover	Induction	Work Load	Adequate Experience	Supportive environment	Educational Supervision	Feedback	Teaching Local	Teaching Regional	Study Leave	Access to Educational Resources			
Acute Care Common Stem																	
Acute Internal Medicine																	
Anaesthetics										Red		Red				2	
Cardio-thoracic surgery										Green							1
Cardiology					Red		Red									2	
Child and adolescent psychiatry				Red								Green				1	1
Clinical oncology			Green											Green			2
Clinical pharmacology and therapeutics	Red	Red					Red	Red				Red				5	
Clinical radiology											Green	Green					3
Core Anaesthetics Training																	
Core Medical Training						Red			Red							2	
Core Psychiatry Training																	
Core Surgical Training																	
Dermatology														Green			1
Emergency medicine		Red								Red						2	
Endocrinology and diabetes mellitus		Red	Red				Red						Red			5	
F1																	
F2																	
Forensic psychiatry																	
GP in secondary care																	
GP prog - in a GP practice					Red				Red							2	
Gastroenterology							Red									1	
General psychiatry				Red	Red											2	
General surgery			Green														1
Genito-urinary medicine						Green	Red									1	Green
Geriatric medicine		Red	Red				Red	Red				Red				5	
Haematology													Red			1	
Histopathology																	
Infectious diseases					Green								Red			1	1
Medical microbiology				Red			Red									2	
Medical microbiology and virology				Red										Green		1	1
Medical oncology													Red			1	
Neurology													Red				
Neurosurgery						Red							Red			2	
Obstetrics and gynaecology				Green													1
Old age psychiatry				Red									Red			2	
Ophthalmology				Red												1	
Oral and maxillo-facial surgery						Green				Green			Red			1	2
Otolaryngology			Green														1
Paediatrics																	
Palliative medicine						Green											1
Plastic surgery									Red				Red		Red	3	
Psychiatry of learning disability											Green			Green			3
Public health medicine																	1
Renal medicine													Red	Red	Red	4	
Respiratory medicine																1	
Rheumatology																	
Sport and Exercise Medicine						Green											1
Trauma and orthopaedic surgery													Green				1
Urology													Green				1
Vascular surgery			Green														1
Total Red	1	4	2	6	3	7	6	3	1	2	6	6	2	1	50		
Total Green			4	1	3	3				2	2	4	1	5			25

# Programme Type National Rankings

EoE Ranking
Total number of LETBs Delivering this Programme



The rankings chart shows East of England's Overall Satisfaction ranking in comparison to the other LETBs. In the boxes above the chart is East of England's ranking and the total number of LETBs delivering the programme nationally.

